

# RE-EXAMINING SUNSPOT TILT ANGLE TO INCLUDE ANTI-HALE STATISTICS

B. H. McClintock

*University of Southern Queensland, Toowoomba, 4350, Australia*

`u1049686@umail.usq.edu.au`

A. A. Norton

*HEPL, Stanford University, Palo Alto, CA 94305, USA*

`aanorton@stanford.edu`

and

J. Li

*Department of Earth, Planetary, and Space Sciences, University of California at Los Angeles, Los Angeles, CA 90095, USA*

`jli@igpp.ucla.edu`

## ABSTRACT

Sunspot groups and bipolar magnetic regions (BMRs) serve as an observational diagnostic of the solar cycle. We use Debrecen Photoheliographic Data (DPD) from 1974-2014 that determined sunspot tilt angles from daily white light observations, and data provided by Li & Ulrich (2012) that determined sunspot magnetic tilt angle using Mount Wilson magnetograms from 1974-2012. The magnetograms allowed for BMR tilt angles that were anti-Hale in configuration, so tilt values ranged from 0 to 360° rather than the more common  $\pm 90^\circ$ . We explore the visual representation of magnetic tilt angles on a traditional butterfly diagram by plotting the mean area-weighted latitude of umbral activity in each bipolar sunspot group, including tilt information. The large scatter of tilt angles over the course of a single cycle and hemisphere prevents Joy's law from being visually identified in the tilt-butterfly diagram without further binning. The average latitude of anti-Hale regions does not differ from the average latitude of all regions in both hemispheres. The distribution of anti-Hale sunspot tilt angles are broadly distributed between 0 and 360° with a weak preference

for east-west alignment  $180^\circ$  from their expected Joy’s law angle. The anti-Hale sunspots display a log-normal size distribution similar to that of all sunspots, indicating no preferred size for anti-Hale sunspots. We report that  $8.4\% \pm 0.8\%$  of all bipolar sunspot regions are misclassified as Hale in traditional catalogues. This percentage is slightly higher for groups within  $5^\circ$  of the Equator due to the misalignment of the magnetic and heliographic equators.

*Subject headings:* sunspots

## 1. Introduction

The  $\sim 11$  yr pattern of sunspot activity begins at high latitudes (near  $\pm 30^\circ$ ) to form a latitudinal band of activity. The unsigned mean latitude of sunspot location decreases over time. This is observed as a drift in the hemispheric latitudinal bands towards the equator later in the cycle. Late cycle sunspots finally appear near the equator while the next solar cycle sunspots begin emerging at high latitudes. A diagram of sunspot latitude as a function of time over the course of a solar cycle resembles butterfly wings, as first noted by Maunder & Maunder (1922). We show a version of the butterfly diagram in Figure 1 using the Debrecen Photoheliographic Data (DPD) described in the next section. Carrington (1858) first noticed that the average latitude of sunspot emergence becomes increasing equatorward as the solar cycle progresses. Maunder & Maunder (1922) said that the diagram “seems to suggest three butterflies pinned down to a board with their wings extended. Heads, bodies and legs have disappeared, but the outstretched wings remain. Each pair of wings is distinct from the next; there is a clear V-shaped gap between each of the two specimens.”

Observations of magnetic flux (Hale et al. 1919) reveal sunspot groups have opposite polarities for leading and following spots with respect to solar rotation. The majority of the time, the leading spot of a bipolar magnetic region (BMR) has the opposite polarity to leading spots in the other hemisphere. With every solar cycle, the hemispheres alternate the dominant leading sunspot polarity as seen in Figure 2, courtesy of David Hathaway at NASA Marshall Space Flight Center. Hale’s law, as it is often called, denotes that if the northern hemisphere has a BMR configuration where the leading spot is positive and the following spot is negative, then the southern hemisphere would have the leading spot as negative and the following spot as positive. BMRs that have the opposite orientation from the expected polarities are considered anti-Hale.

Leading spots, on average, are closer to the equator than following spots. The difference in the latitudinal location of the leading and following spots is related as a tilt in the angle

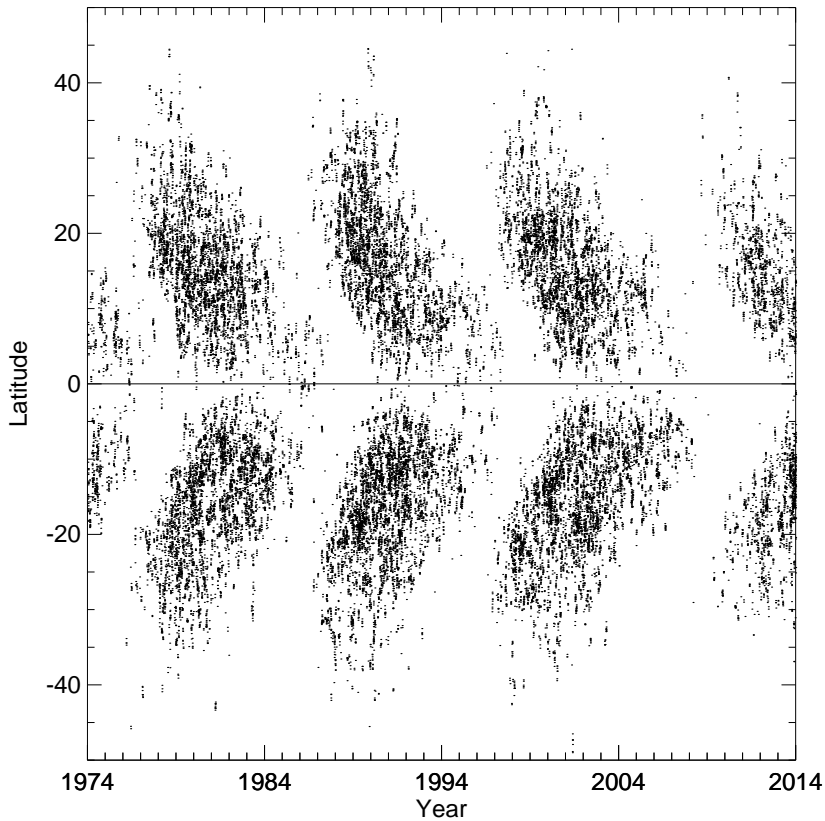


Fig. 1.— Latitude of bipolar sunspots as a function of time from daily DPD observations. Portions of Solar Cycles 20 and 24 are visible at the left and right edges of the diagram, respectively, while all of Cycles 21-23 are shown.

between the equator and a line drawn between bipolar sunspot groups. Joy’s law describes how BMRs on the solar surface are tilted with respect to the east-west equator of the Sun, with average tilt angle increasing as a function of increasing latitude. Sunspot tilt angle may inform us about the process by which bipolar magnetic activity originates and rises to the surface. The large scatter in tilt angles makes it difficult to recover Joy’s law for a single solar cycle or individual hemisphere (McClintock & Norton 2013). There is some indication that the slope of Joy’s law is anti-correlated with the strength of a solar cycle (Dasi-Espuig et al. 2010), although this is still under debate.

Historical data used for the determination of BMR tilt angle have not included magnetic polarity information to correctly identify anti-Hale regions. Anti-Joy regions (those with the follower spot closer to the equator than the leading spot) are not necessarily anti-Hale (Tlatov et al. 2013). The existence of significant numbers of anti-Hale spots has been argued

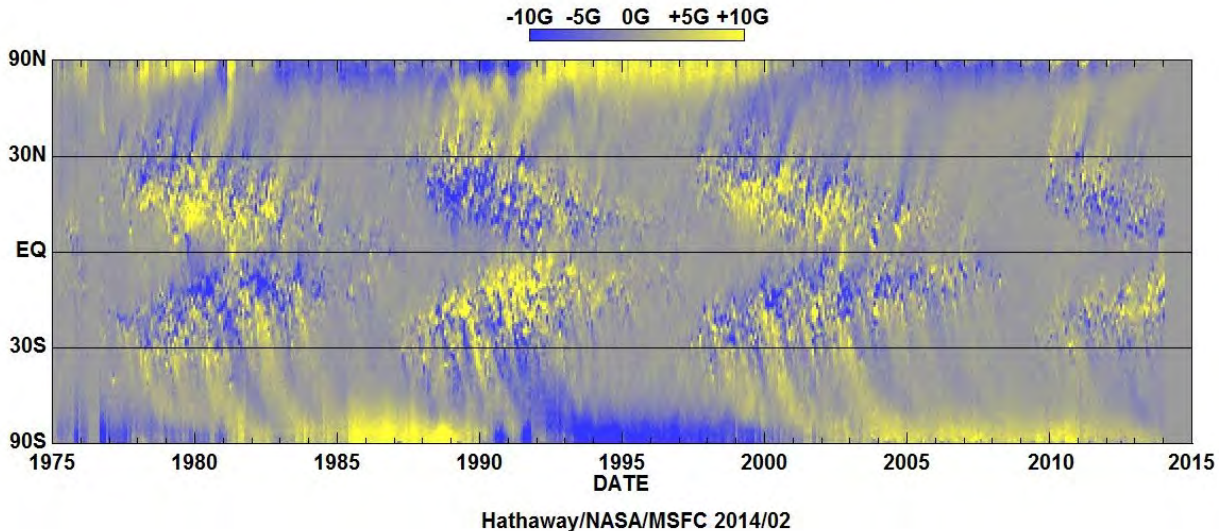


Fig. 2.— Diagram of the magnetic field of the Sun. Yellow represents positive (outward) flux, blue represents negative (inward) flux. Hale’s law can be observed. Courtesy of NASA/MSFC/David Hathaway.

as evidence that our current understanding of sunspot formation is incomplete, if not flawed. Stenflo & Kosovichev (2012) speculate that anti-Hale spots were caused by the existence of toroidal flux bands in opposite orientation at the same latitudinal in the interior.

Tilt angle has been historically determined using white light observations from which magnetic polarity and anti-Hale information cannot be extracted. Observational studies of BMRs include polarity information, but many of the BMR studies include regions that are not sunspots since they do not have an umbra and penumbra seen in continuum intensity. The BMRs in these studies include smaller active regions without sufficient flux to form sunspots or former sunspot regions that have broken apart. One example is the work of Wang & Sheeley (1989) who observed 2706 BMRs with fluxes  $\geq 3 \times 10^{20}$  Mx from daily magnetograms obtained at the National Solar Observatory (NSO) during Solar Cycle 21 between 1976-1986. Using the expected polarity for that cycle, they classified 113 BMRs as anti-Hale or approximately 4%. Stenflo & Kosovichev (2012) using MDI/SOHO magnetograms confirmed 4% of mid-size to large BMRs between 1995-2011 were anti-Hale; however, smaller regions unlikely to form sunspots exceeded 25%.

Others have reported similar low percentages of anti-Hale regions; 3.1% (Richardson 1948) and  $<5\%$  (Smith & Howard 1967). However, these studies included in their total number of regions those that were not sunspots, regions that were unipolar, and poorly observed regions. (Note: tilt angles were not determined for the unipolar regions, but they

were counted as part of the total number of regions to determine a percentage.) Khlystova & Sokoloff (2009) noted that their determination of 4.9% anti-Hale of bipolar sunspot regions might be low due to regions not properly recorded as anti-Hale in the data. Harvey (1992) used Mount Wilson sunspot polarity drawings and NSO full-disk magnetograms to propose that anti-Hale regions at high latitudes may be an indication of the next solar cycle starting earlier than previously established. This is an obvious problem if a single date is used to separate one cycle from another. We avoid this problem by separating the distinct cycles as a function of time and latitude so that high-latitude new cycle spots can be correctly identified and not mistaken for anti-Hale regions.

Maunder & Maunder (1904) noticed that the Southern hemisphere was producing spots on and across the Equator for Solar Cycle 12. He states “Though the diagram shows clearly that there is but a single spot-zone in either hemisphere in each of these two cycles, a zone which moves in general accordance with Spörer’s curves, it reveals a striking and unexpected fact – namely, that the southern current not only reaches the equator, but crosses it. The limit which bounds spot-distribution in the southern hemisphere on the equatorial side can be traced not only as far as the equator, but beyond it.” Spörer’s curves represent the progressive migration of sunspot mean latitude toward the Equator over the course of a solar cycle (Spörer 1890). Throughout this paper, we make a distinction between the magnetic and heliographic equators. Zolotova et al. (2009) define the magnetic equator as the difference in latitude of sunspot production between the hemispheres. We define magnetic equator in a similar fashion using only sunspot group latitudes. We explore whether a percentage of anti-Hale regions near the Equator are due to Northern polarity spots appearing below the heliographic equator or vice versa.

## 2. Data

The Debrecen Photoheliographic Data (DPD),<sup>1</sup> spanning dates from 1974 January 2 to the present, consist of daily white light images taken primarily at the Heliophysical Observatory of the Hungarian Academy of Sciences (Győri et al. 2011). Our collection from 1974 January 2 to 2014 February 27 is based on 38,852 daily measurements of tilt angle and latitude (Figure 1). We average latitude and tilt over the life of each region, resulting in 6968 sunspot regions. At the time of publication, data were still under preparation for 1980 to 1985 due to missing plates. Note that the Hungarian Academy of Sciences houses a similar data set using hourly MDI observations known as SOHO/MDI-Debrecen Data (SDD)

---

<sup>1</sup><http://fenyi.solarobs.unideb.hu/DPD/index.html>

with dates ranging from 1996 May 19 to 2010 December 31, although we are not utilizing the SDD data in this paper because they only contain one cycle and do not currently offer advantages over the DPD data other than an hourly cadence and coverage uninterrupted by poor atmospheric conditions. The SDD data use the polarity of sunspots only “to separate to the following or leading portion of the group independently from the geometrical position of spots” and do not indicate “whether the polarities of the leading and following part follows the Hale’ polarity law or not, the leading part is always that part which is in the leading position according to its longitude.”<sup>2</sup> The SDD data has the potential to report on Hale’s polarity law and record a full 360° range of tilt angles. We hope this paper emphasizes the importance of anti-Hale statistics in order to encourage catalogues like SDD or STARA<sup>3</sup> (another sunspot catalogue using MDI and HMI data) to include polarity information with full tilt angle ranges.

Li & Ulrich (2012) collected data from 1974 to 2012 using primarily Mount Wilson Observatory daily sunspot records and daily averaged magnetograms as well as MDI/SOHO magnetograms from 1996 to 2010. Approximately 30,600 sunspot tilt angles were recorded with magnetic polarity information. Only sunspot data were included, meaning there were no smaller magnetic regions that were not visible in white light images included in their sample. Instead of plotting daily values, we average latitude and tilt over the life of each sunspot region, which provides a data set of 8377 bipolar sunspot regions. See Li & Ulrich (2012) for all details and methodology, which include the assigning of ellipsoidal boundaries and centroids of polarity for active regions.

Magnetic information in historical data sets (Table 1) may have been used to identify that a certain spot group was bipolar, but not to establish a true magnetic tilt angle based on the dominant leading polarity for the hemisphere and solar cycle (i.e., tilt angles in historical data are limited to  $\pm 90^\circ$  not  $0 - 360^\circ$ ). Data of this type are flawed because anti-Hale regions are not recorded as such. All data in Table 1 report tilt angles in the southern hemisphere as positive if the leading sunspot is closer to the equator than the following spot, regardless of the polarity of the leading sunspot. It was only the combination of magnetic polarity information with sunspot data by Li & Ulrich (2012) that allows for the reporting and analysis of anti-Hale sunspot activity.

---

<sup>2</sup>*ftp : //fenyi.solarobs.unideb.hu/pub/SDD/additional/tilt\_angle/Readme.txt*

<sup>3</sup>*http : //www.nso.edu/staff/fwatson/STARA/catalogue*

Table 1: Data Containing Tilt Angle Measurements without Anti-Hale Information

Data	Dates	Cadence
Mount Wilson (MW)	1917-1985	daily
Kodaikanal (KK)	1906-1987	daily
Debrecen Photoheliographic Data (DPD)	1974-2014	daily
SOHO/MDI-Debrecen Data (SDD)	1996-2010	hourly
SDO/HMI-Debrecen Sunspot Data (HMIDD)	2010-2013	hourly

### 3. Adding Tilt Angle to Butterfly Diagrams

Variations in the way the butterfly diagram is plotted can illustrate characteristics of the solar cycle beyond the simple fact that sunspots move equatorward over time. For example, if sunspot area is included, as shown in Figure 3 and originally produced by Hathaway et al. (2003), then details regarding the times of greatest sunspot area production are evident roughly in the center of the butterfly wings. Ternullo (2007, 2010) further studied the density of sunspot area as a function of time and latitude and found that in any hemisphere the activity is split into two or more distinct activity waves drifting equatorward. We explore whether the depiction of the bipolar sunspot region tilt angles as plotted in the classical butterfly diagram format can tell us anything more about the solar dynamo.

Using magnetic polarity information, Li & Ulrich (2012) defined tilt angle from the west to produce a range of  $-180^\circ$  to  $180^\circ$ . We define tilt angle in similar fashion, measuring tilt angle counterclockwise from the north to produce a full range of  $360^\circ$  as well (Figure 4), rather than the traditional tilt angle range of  $-90^\circ$  to  $90^\circ$  used in other data sets, such as those listed in Table 1. Our tilt angles have the same range as Li & Ulrich, however by comparison we would define an angle of  $90^\circ$  by Li & Ulrich as  $0^\circ$  in our orientation from the north.

Examples of expected tilt angles for Solar Cycle 24 are included in Figure 4 for reference. We define anti-Hale tilt angles in Solar Cycles 20, 22, and 24 for the northern (southern) hemisphere as between  $0^\circ$  and  $180^\circ$  ( $180^\circ$  and  $360^\circ$ ). For Cycles 21 and 23, anti-Hale in the northern (southern) hemisphere is between  $180^\circ$  and  $360^\circ$  ( $0^\circ$  and  $180^\circ$ ). We would expect tilt angles in Cycle 24 for example to average slightly less than  $90^\circ$  in the Northern hemisphere and slightly more than  $270^\circ$  in the Southern hemisphere according to our definition of tilt angle.

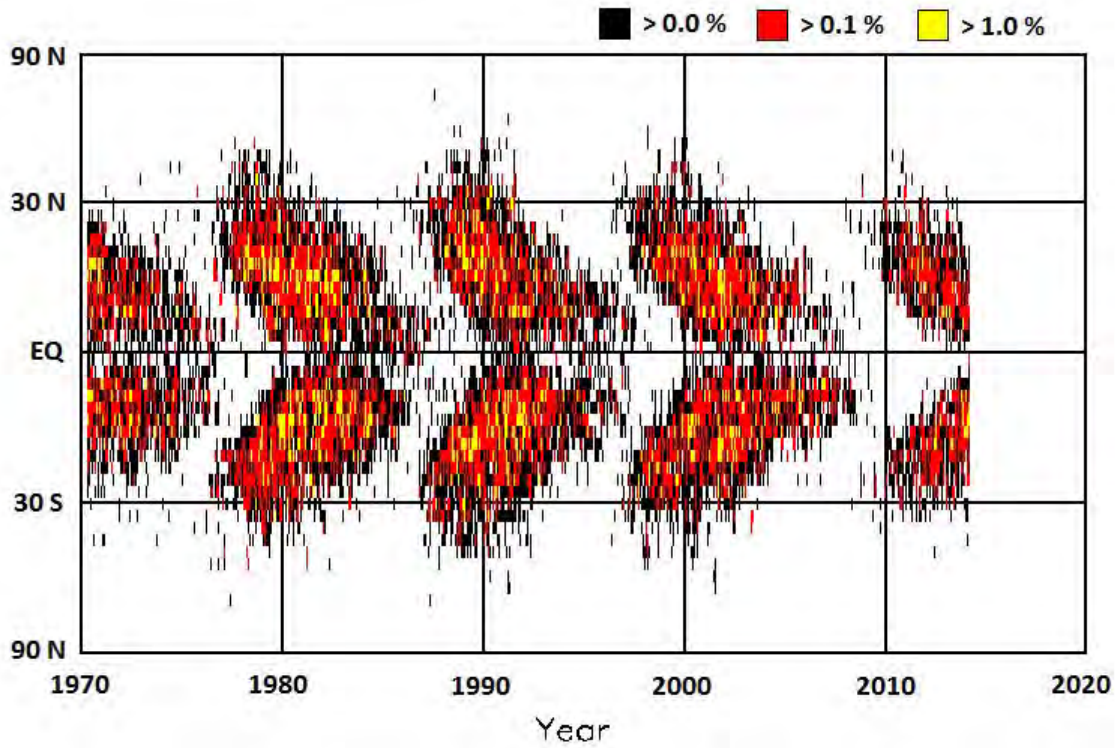


Fig. 3.— Daily mean sunspot area per each solar rotation plotted as a function of time and latitude. Areas are binned in 50 equal-area latitude strips. The relative area of the sunspot group is illustrated with black, red, and yellow as areas of increasing size. Courtesy of NASA/MSFC/David Hathaway



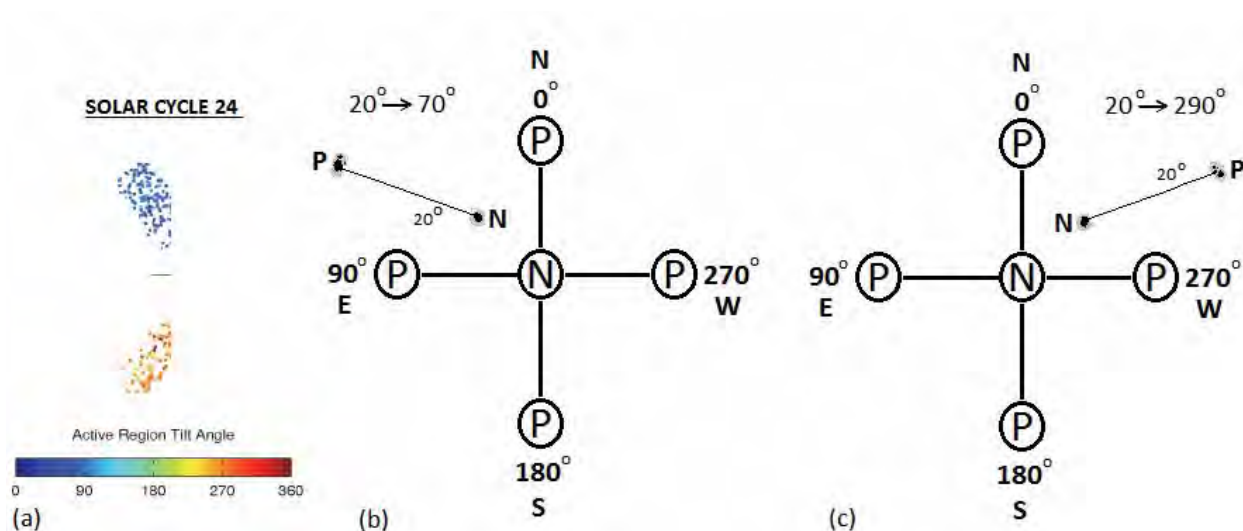


Fig. 4.— “P” is positive polarity, “N” is negative. (a) An example of expected tilt angles for Solar Cycle 24. We would expect tilt angles to average slightly less than  $90^\circ$  and slightly more than  $270^\circ$  for this cycle. (b) The dominant leading polarity in the northern hemisphere for Solar Cycle 24 is negative. A northern hemisphere tilt angle of  $20^\circ$  from the equator would be  $70^\circ$ . (c) A southern hemisphere tilt angle of  $20^\circ$  from the equator would be  $290^\circ$ . Li & Ulrich (2012) defined tilt angle from the west to produce a similar range of  $360^\circ$ .

Solar Cycles 20 to 24 are plotted from Li & Ulrich data to include tilt angle as measured counterclockwise from the north (Figure 5). The latitude of the sunspot group is an average of area-weighted latitude determinations of leading and following sunspot umbrae. Solar Cycles 20, 22, and 24 have a negative (positive) leading sunspot in the northern (southern) hemisphere. Solar Cycles 21 and 23 are reversed to where the northern (southern) hemisphere has a positive (negative) leading sunspot.

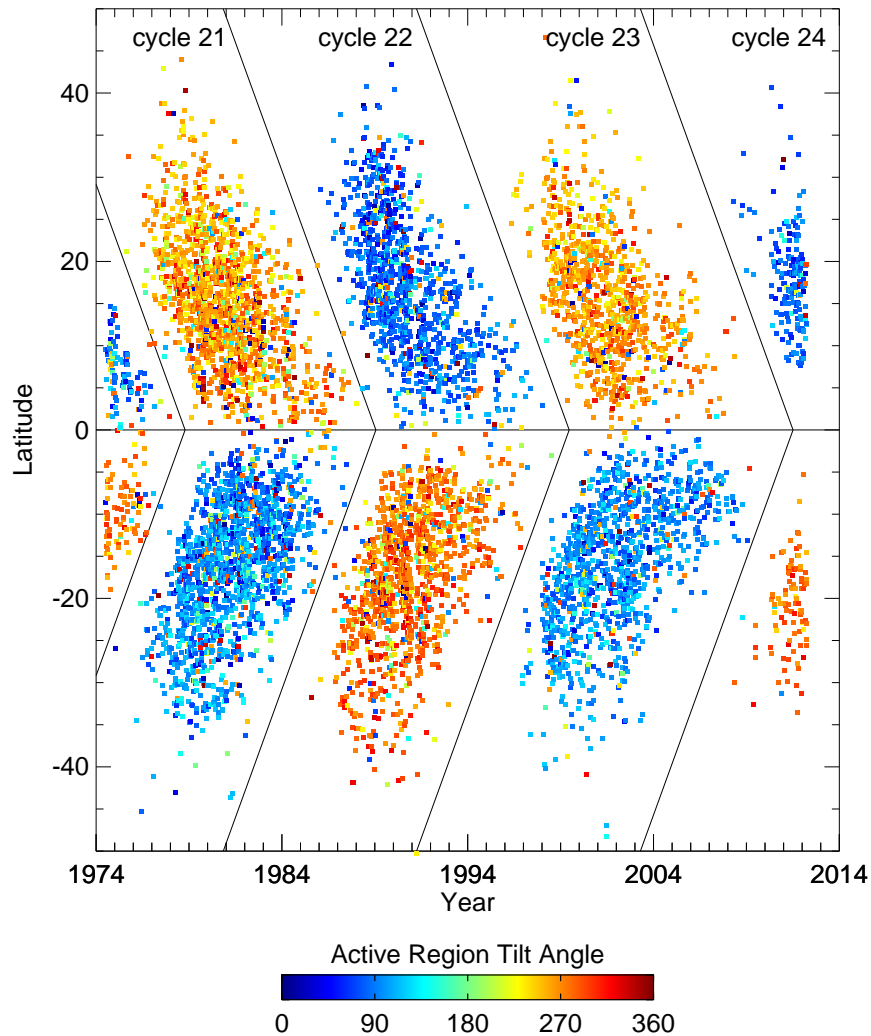


Fig. 5.— Tilt angles from Li & Ulrich (2012) data averaged by bipolar sunspot region and plotted as a function of time and latitude. Tilt measured counterclockwise from the north. Slope ( $\pm\frac{1}{60}$ ) and location of solar cycle boundaries chosen manually for best fit. A portion of Solar Cycle 20 is visible at the left edge of the diagram.

The boundary between the hemispheres is defined by the heliographic equator and the

boundaries between cycles for the southern/northern hemispheres are defined by  $60 \times ylat = \pm(xdate - xint)$ , where  $ylat$  is latitude,  $xdate$  is a function of the number of days from 1974 January 1 and  $xint$  is the point of intersection at the equator.<sup>4</sup> We visually determined the slope,  $\frac{1}{60}$ , as a value that could easily demarcate all of the cycles while  $xint$  was visually determined separately for the best fit for each cycle as determined by the plot of all regions. Values and dates are listed in Table 2. We explicitly denote the solar cycle boundaries in the paper because the determination of anti-Hale regions depends on it.

Table 2: Solar Cycle Boundary Information Used to Determine Anti-Hale Activity

Solar Cycle	Minimum	$xint$	Date
20	...	1	1974 Jan 1
20/21	1976 Jun	1750	1978 Oct 16
21/22	1986 Sep	5500	1989 Jan 21
22/23	1996 May	9300	1999 Jun 18
23/24	2008 Jan	13700	2011 Jul 5

Solar Cycles 20 to 24 are plotted from DPD data to include tilt angle as measured counterclockwise from the north (Figure 6). Latitude of the sunspot group is an average of area-weighted latitude determinations of leading and following sunspot umbrae. Sunspot groups near the equator are assigned a hemisphere as determined by mean latitude, regardless of leading spot polarity. DPD data are limited to a tilt angle range of  $180^\circ$ , so we used the expected polarity orientation for that solar cycle to assign a range of  $0$  to  $180^\circ$  to the appropriate hemisphere and  $180^\circ$  to  $360^\circ$  to the other hemisphere. Anti-Hale information is therefore not represented in either hemisphere for any solar cycle.

We use mean and median of tilt angles plotted over sunspot butterfly diagrams to confirm that tilt angle time dependence is a function of sunspot latitude (Li & Ulrich 2012). We first binned all data points in 300 day intervals, then found mean and median tilt angles ( $\gamma$ ) of each bin using

$$mean(\gamma) = \arctan \left( \frac{\sum \sin \gamma}{\sum \cos \gamma} \right), \tag{1}$$

$$median(\gamma) = \arctan \left( \frac{median(\sin \gamma)}{median(\cos \gamma)} \right). \tag{2}$$

---

<sup>4</sup> $xdate = 365.25(year - 1974) + DOY$

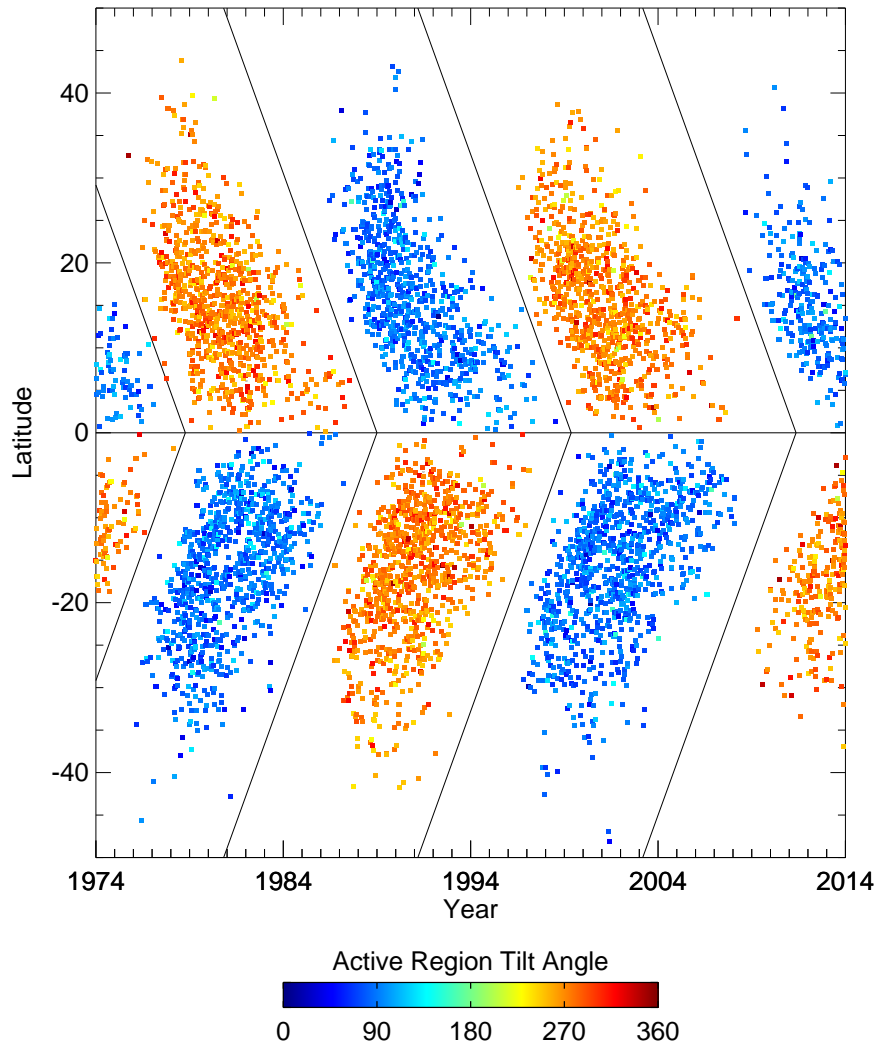


Fig. 6.— Tilt angles from DPD data averaged by bipolar sunspot region and plotted as a function of time and latitude. Tilt measured counterclockwise from the north and assigned a range of either  $0-180^\circ$  or  $180^\circ-360^\circ$  based on the expected polarity orientation for each hemisphere in that solar cycle. Portions of Solar Cycle 20 and 24 are visible at the left and right edges of the diagram, respectively, with all of Cycles 21-23 presented.

Mean (solid) and median (dashed) of each bin are plotted over the butterfly diagram of all sunspots in Figure 7(a). We also determined mean latitude and tilt angle for each active region, binned those values in 300-day intervals, and found mean and median of each bin (Figure 7(b)) using Equations (1) and (2). The sunspot latitude is given on the left vertical axis with a range of  $0-40^\circ$ . The tilt angle mean and median (lines) are shown on the right vertical axis with a range of  $0-20^\circ$ . It should be noted that the tilt angles were

not separated by cycle boundaries in Figure 7. The 300-day bins near solar minimum will contain overlapping cycles for data shown in these figures. Mean or median tilt angle is not useful near solar minimum and were therefore excluded from the plots. Tilt angle decreases as sunspots migrate from high to low latitudes in each solar cycle, as expected from Joy’s law. Note that the decrease of tilt angle over time is not smooth, but discontinuous, possibly an indication of the distinct dynamo waves as mentioned by Ternullo (2007, 2010). Standard deviation,  $s(\gamma)$ , as set by,

$$s(\gamma) = \sqrt{\frac{(\overline{\sin\gamma})^2 + (\overline{\cos\gamma})^2}{n}} \quad (3)$$

of all sunspot observations (solid) and active region means (dash) for the Northern (red) and Southern (blue) hemispheres are shown in Figure 7(c). The peak of tilt angle scatter occurs as expected between solar cycles when polarities in both hemispheres are changing 180° in accordance with Hale’s law.

#### 4. Anti-Hale Regions

Li & Ulrich data are used to plot anti-Hale bipolar sunspot regions from 1974 to 2012 as a function of time and latitude (Figure 8). Tilt angles were averaged over the lifetime of each region. With fewer data points, a larger pixel size than previous figures is assigned to make color variations more visible.

The percentage of bipolar sunspot regions that are anti-Hale from 1974 to 2012 are shown in Table 3. See Table 2 for solar cycle boundary definitions. The total sunspot area by hemisphere for Solar Cycles 20 to 23 from the archives of the Greenwich Royal Observatory<sup>5</sup> is in  $10^4$  micro-hemispheres. Sunspot area is used as a proxy for cycle strength (Solanki & Schmidt 1993). Solar Cycles 20 and 24 only include partial bipolar sunspot data at the end and beginning of those cycles, respectively, which could explain the high percentage of anti-Hale in the northern hemisphere for Solar Cycle 20. Of 8377 bipolar sunspot regions, 705 (8.4%) were anti-Hale. We found anti-Hale percentages of 9.0%, 8.7%, and 7.2% for Solar Cycles 21, 22, and 23 respectively, with 14.8% for Cycle 20 and 4.0% for Cycle 24.

---

<sup>5</sup><http://solarscience.msfc.nasa.gov/greenwch.shtml>

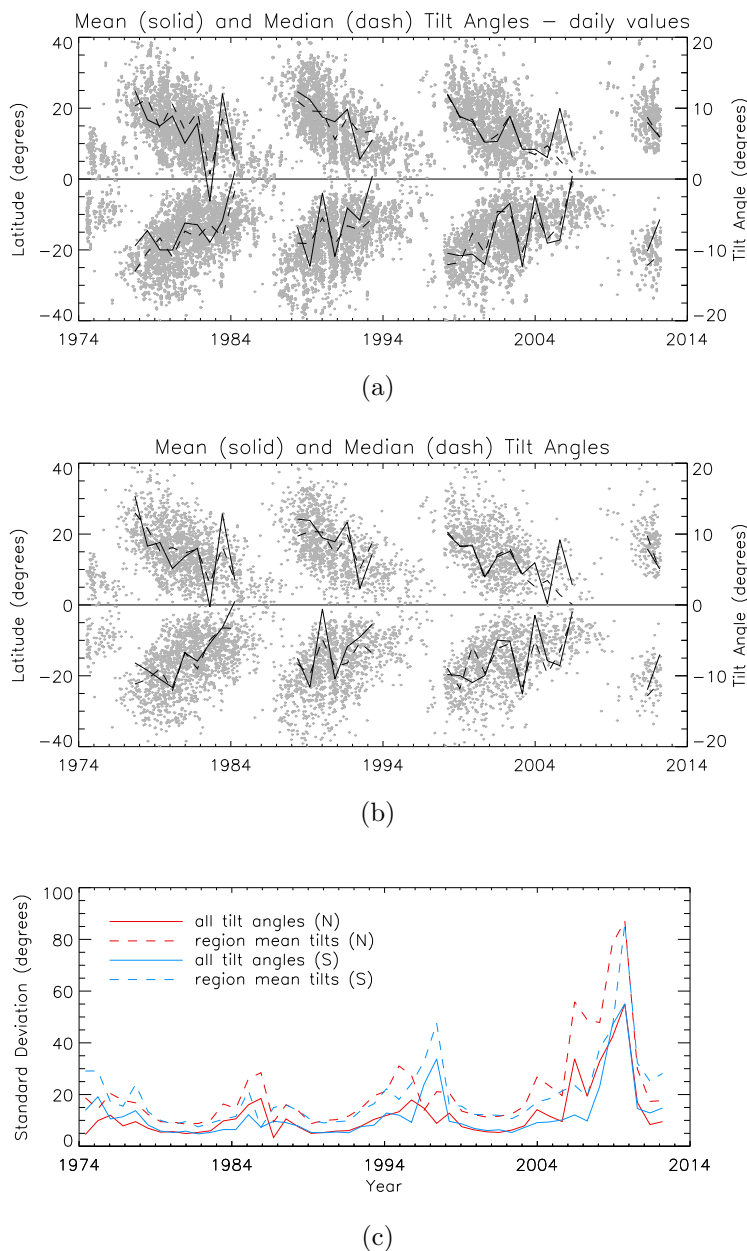


Fig. 7.— In panels (a) and (b), mean (solid) and median (dash) tilt angles binned in 300 day intervals are plotted over the sunspot butterfly diagram. Latitudes (tilt angles) are given in the left (right) vertical axis. The horizontal straight line indicates the equator. In panel (a), sunspot tilt angles and latitudes are recorded for each day (daily) that the sunspot group is present on the disk. In panel (b), the average tilt and latitude for that group is recorded only once during its passage across the disk. In panel (c), standard deviation of all sunspot observations (solid) and active region means (dash) for the northern (red) and southern (blue) hemispheres are shown.

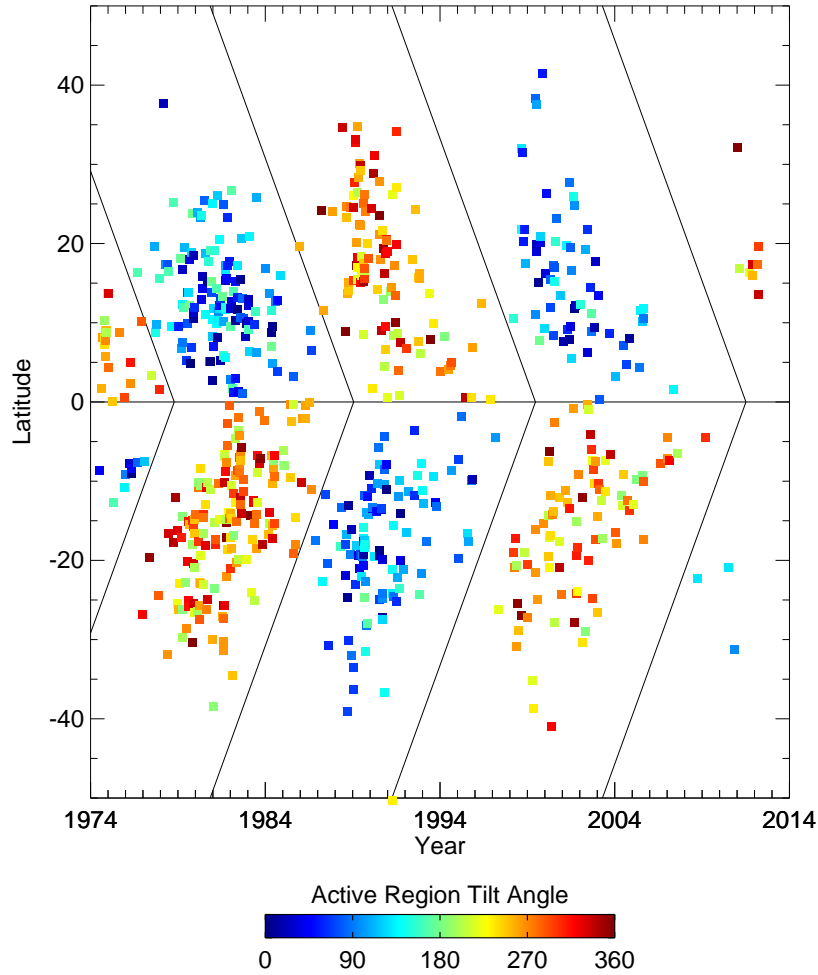


Fig. 8.— Anti-Hale tilt angles from Li & Ulrich (2012) data averaged by bipolar sunspot region and plotted as a function of time and latitude. Tilt measured counterclockwise from the north. Portions of Solar Cycle 20 and 24 are visible at the left and right edges of the diagram, respectively, with all of Cycles 21-23 presented. With fewer data points, larger pixel size assigned to make color variations more visible.

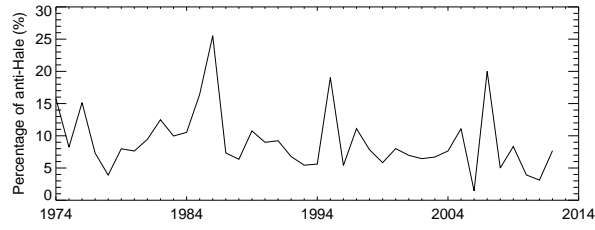
Table 3: Anti-Hale (AH) Information by Solar Cycle and Hemisphere with Total Area

Cycle (yr) Length	Year of Minimum	Northern Hemisphere			Southern Hemisphere			Total
		N	AH	$\Sigma$ Area <sup>a</sup>	N	AH	$\Sigma$ Area <sup>a</sup>	AH
20 (partial)	(1964.8)	(107)	(19.6%)	6.94	(96)	(9.4%)	4.91	14.8%
21 (10.3)	1976.5	1547	8.4%	7.51	1710	9.5%	7.77	9.0%
22 (10.0)	1986.8	1150	9.0%	6.38	1287	8.5%	7.24	8.7%
23 (12.2)	1996.9	1004	6.6%	5.61	1178	7.8%	6.45	7.2%
24 (partial)	2008.1	(193)	(4.7%)	...	(105)	(2.9%)	...	4.0%
Total	...	4001	8.2%	...	4376	8.6%	...	8.4%

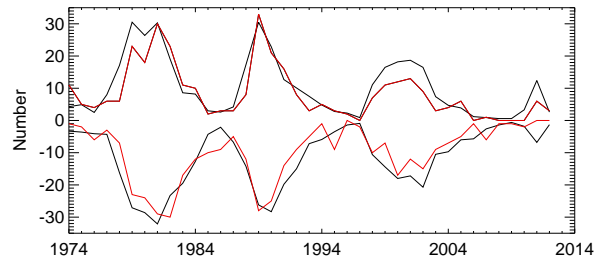
<sup>a</sup>total sunspot area in  $10^4$  micro-hemispheres.

Figure 9(a) shows that the percentage of anti-Hale regions binned yearly are relatively consistent over time except near the end of each cycle. This could be a result of activity occurring at low latitudes, thus interacting across the equator. The number of anti-Hale regions (red) closely tracks the number of bipolar sunspot regions divided by 10 (black) in Figure 9(b). Similar tracking occurs when mean latitude of bipolar sunspot regions (black) and anti-Hale (red) are plotted, with the standard deviation as error bars (Figure 9(c)). Zolotova et al. (2009) defined the magnetic equator as the difference in the latitudinal centroids of the sunspot locations in the hemispheres. Our data are limited to sunspot groups, of which we take the yearly mean latitude in each hemisphere and average the two values to define the magnetic equator (blue). Note that the magnetic equator is deflected southward at all times except for the beginning of Solar Cycle 24. Zolotova et al. (2009) also calculated the magnetic equator from Royal Greenwich Observatory USAF/NOAA data showing that the magnetic equator was located a few degrees south of the heliographic equator.

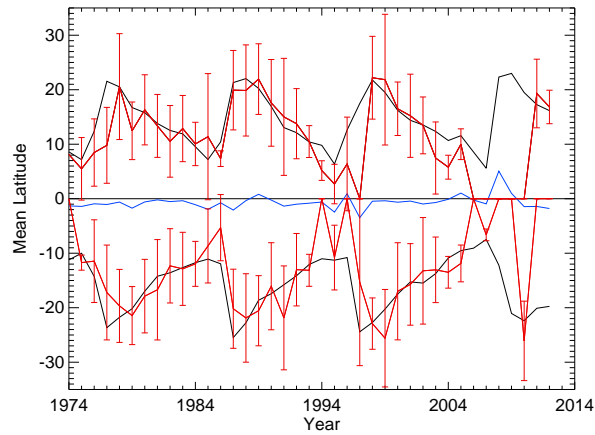




(a)



(b)



(c)

Fig. 9.— Yearly binning of Li & Ulrich (2012) data plotted over time. (a) The percentage of bipolar sunspot regions that are anti-Hale. (b) The number of bipolar sunspot regions divided by 10 (black) and anti-Hale regions (red). (c) Mean latitude of bipolar sunspot regions (black) and anti-Hale (red). Standard deviation of anti-Hale bins plotted as error bars. The magnetic equator (blue) is defined as the difference in the latitudinal centroids of the sunspot locations in the hemispheres. Note that the magnetic equator is deflected southward of the heliographic equator at all times except for the beginning of Solar Cycle 24.

Tilt angles with polarity (0 - 360°) were binned in 10° bins. The number of sunspots for each bin is shown in Figure 10 as total (solid). We plotted anti-Hale tilt angles normalized by the total number of sunspots (dot) and normalized by the total number of anti-Hale spots (dash). Anti-Hale tilt angles are part of a broader distribution of all tilt angles and show a weak dependence on being tilted 180° from their expected Joy’s law angle. The reason for this could be two-fold: (1) that east-west orientations of active regions are preferred and (2) the active regions contributing to the 90° and 270° peaks are the late-cycle, near-equator sunspot groups that are classified as anti-Hale because the magnetic equator is offset from the heliographic equator.

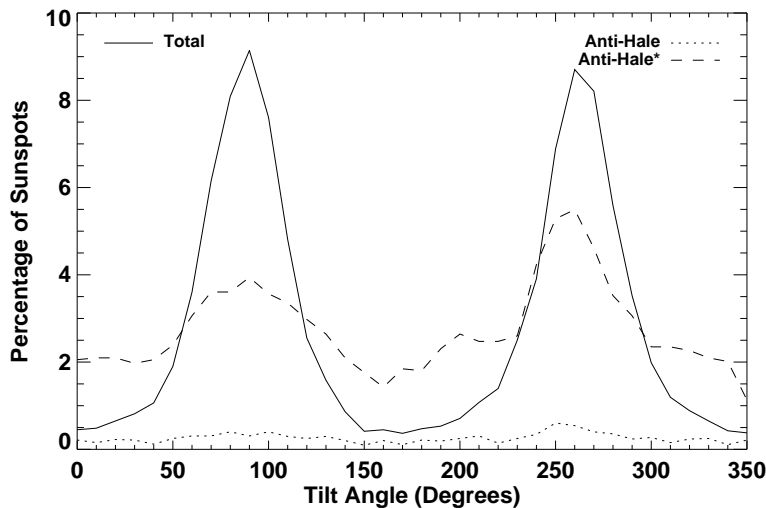
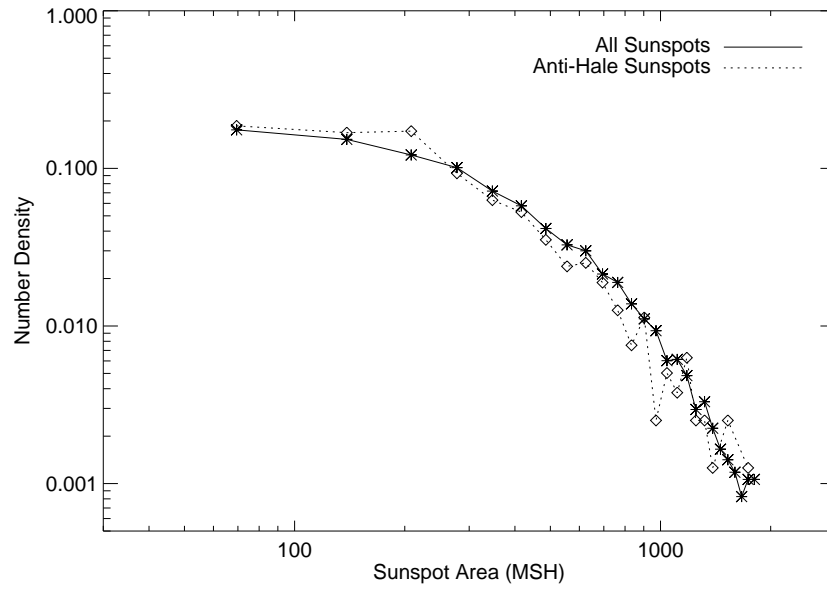
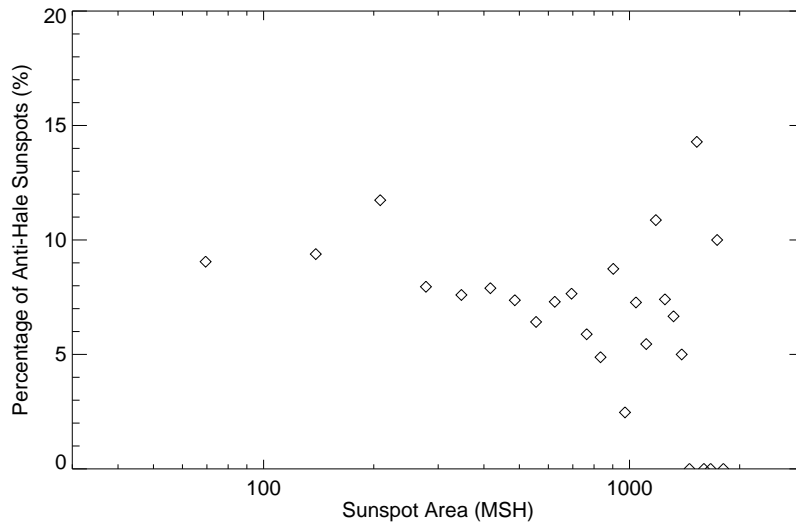


Fig. 10.— Tilt angles (0 - 360°) binned in 10° intervals. Distribution of all sunspot tilt angles (solid), anti-Hale numbers normalized by the total of all tilt angles (dot), and anti-Hale\* normalized by the total of anti-Hale only (dash).

Li & Ulrich (2012) located sunspots on magnetograms to determine sunspot magnetic area in micro-hemispheres (MSH). Figure 11(a) shows the size distribution function of sunspot area for all bipolar sunspots (asterisk, solid) and anti-Hale sunspots (diamond, dotted). The distributions for all sunspots and anti-Hale sunspots are similar to the log-log shape reported by Baumann & Solanki (2005) and Bogdan et al. (1988). The percentage of anti-Hale spots for any given size is roughly 10% as seen in Figure 11(b).



(a)



(b)

Fig. 11.— (a) Size distribution function of sunspot magnetic areas in micro-hemispheres (MSH) for all sunspot groups (asterisk, solid) and anti-Hale sunspots (diamond, dot) on a log-log scale. (b) Percentage of anti-Hale sunspots as a function of sunspot magnetic area in micro-hemispheres (MSH) plotted to log-normal scale.

## 5. Equatorial Regions

We examine the tilt angle of sunspots close to the equator, comparing DPD tilts without anti-Hale information (Figure 12(a)) to Li & Ulrich tilt angles that include anti-Hale (Figure 12(b)). We focus attention within  $5^\circ$  of the equator between 1974-2007. No bipolar regions were within  $5^\circ$  of the equator for the Li and Ulrich data after solar minimum in 2008 January. Although the DPD data are incomplete at the time of publication and some sunspots are present in Figure 12(b) that are not found in Figure 12(a), it can be noted that tilt angles near the equator in Figure 12(a) are at times miscalculated because the algorithm utilized in the DPD data set does not allow for any tilt angles outside the  $\pm 90^\circ$  range. In Figure 12(b), one can find anti-Hale sunspots in any given cycle shown as data points that are  $180^\circ$  opposite the dominant color. Within  $5^\circ$  of the equator, 65 out of 470 (13.8%) bipolar sunspot regions are anti-Hale. This percentage is slightly lower if sunspots at all latitudes are included. From 1974 to 2012, 8.4% of all Li & Ulrich tilt angles are anti-Hale. We therefore assume DPD data have incorrect tilt angles since anti-Hale are not recorded as such.

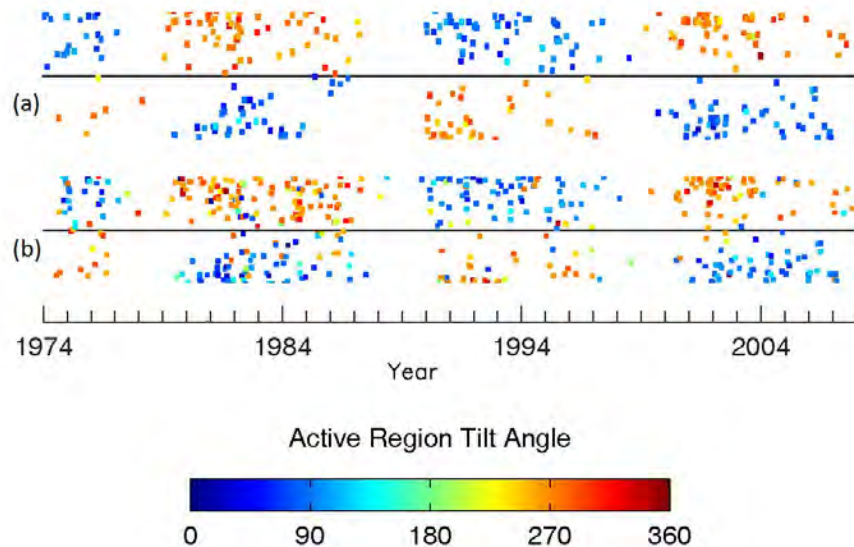


Fig. 12.— Bipolar sunspot regions within  $5^\circ$  of equator from 1974 to 2007. (a) DPD data are incomplete at the time of publication, most significantly from 1980 to 1985. (b) Li & Ulrich data. Panels (a) and (b) are cropped from Figures 6 and 5, respectively.

A southward-deflected magnetic equator in relation to the heliographic equator for the past 40 yr (Zolotova et al. 2009), also seen in Figure 9(c), causes an increase in the number of sunspots that are categorized as anti-Hale late in cycle because northern hemispheric polarity sunspots are appearing south of the heliographic equator. That the magnetic equator is

shifted in relation to the heliographic equator can explain the increase in percentage of anti-Hale spots late in solar cycle. Others (McIntosh et al. 2013; Norton et al. 2014) have investigated the asymmetry of the hemispheres by studying photospheric magnetism and also found that the northern hemisphere has been leading the southern hemisphere in Cycle 24. As mentioned in the discussion of Figure 10, equatorial regions that appear as anti-Hale, because they are northern hemispheric regions emerging slightly south of the heliographic equator contribute to the slight peaks at  $90^\circ$  and  $270^\circ$  in the anti-Hale tilt angle distributions.

In addition to assigned tilt angle range, other differences between DPD data and those of Li & Ulrich become apparent in Figure 12. Data-point density differences could be attributed to weather at each of the sites precluding agreement on any given day. The DPD conversion to digitized data, although nearly complete, is not finished. DPD data identified the active regions by NOAA number while Li and Ulrich relied on Mount Wilson numbering until 1990, switching to NOAA in 1991, which could explain the higher number of data points before 1991 in Figure 12(b) when compared to Figure 12(a).

## 6. Other Efforts to Include Tilt Angle in the Context of the Butterfly Diagram

Plotting quantities as a function of latitude and time has illustrated many physical processes of the sunspot cycle. Because tilt angle as a function of latitude is noisy as seen in Joy’s law, it is unclear whether including tilt angle in the butterfly diagram can be useful. Previous efforts include Tlatov et al. (2013), who used weighted MDI data to plot tilt angle information over butterfly diagrams that used color to indicate sunspot area. Large sunspot areas were defined as larger than 300 millionths of the solar hemisphere (MSH) and small areas as between 50 and 300 MSH. In Figure 13(a), mean tilt angles for large sunspot areas are oriented as expected with positive (negative) mean tilt angles in the northern (southern) hemisphere. Data represented by double circles have a mean tilt value that is indistinguishable from zero. Smaller sunspot areas (Figure 13(b)) have mean tilt angles at high latitudes mostly oriented away from what we would expect. Mean tilt values are noisier in the smaller sunspots (Figure 13(b)) and are not well determined at the beginning of cycles or near the equator. Perhaps it is only useful inasmuch that readers are able to understand that Joy’s law is not well behaved or statistically easy to recover for a single hemisphere and solar cycle. Tlatov et al. (2013) claims that these results are indicative of two distinct dynamo processes occurring, one that generates large sunspots and another that generates small sunspots. Overplotting tilt angle on the butterfly diagram was productive in their efforts after separating the large and small sunspots.

It appears that there is a contradiction in the literature, as follows. Kosovichev & Stenflo

(2008) do not find a dependence of tilt angle value on sunspot flux. (Note that sunspot flux and size are highly correlated.) Weber et al. (2013) simulations show that the tilt angle scatter increases for lower flux regions but the mean tilt angle does not vary significantly with flux. Jiang et al. (2014) present Kodaikanal and Mt. Wilson Observatory tilt angle data binned according to sunspot size. They find that “the average tilt angles have a weak trend to increase with the sunspot group size, while the standard deviations significantly decrease” with sunspot group size. However, Tlatov et al. (2013) find that smaller sunspots show more scatter and consistently have average tilt angles that are anti-Joy (not anti-Hale). The contradiction may in part have its source in the different data used to determine group size: Tlatov et al. (2013) uses MDI magnetograms to determine area while Jiang et al. (2014) use white-light intensity from ground-based observations. Kosovichev & Stenflo (2008) also use MDI magnetograms, so the disagreement between Tlatov et al. (2013) and Kosovichev and Stenflo is difficult to understand.

We disagree with Tlatov et al. (2013) as we do not think there are two distinct dynamo processes occurring. We also disagree with Kosovichev & Stenflo (2008) that anti-Hale spots indicate the presence of oppositely directed toroidal bands occurring simultaneously in the same hemisphere. Rather, we agree with Weber et al. (2013) simulations showing that the convective flows interact with the rising thin flux tubes to produce anti-Hale regions. Weber et al. (2013) find “that 6.9% emerge with polarities that violate Hale’s Law, in comparison to the  $\approx 4\%$  as found via observations” of Wang & Sheeley (1989) and Stenflo & Kosovichev (2012). We agree with Weber et al. (2013) observations that the anti-Hale spots “arise as a result of flux tubes emerging in the opposite hemisphere from which they originated, or as a result of the flux tube becoming so distorted by convection that the legs of the emerging loop can become reversed.”

X. Sun and T. Hoeksema (in preparation) are using tilt angle information from the DPD data set to illustrate how flux transport on the solar surface reverses the polarity of the Sun’s poles.

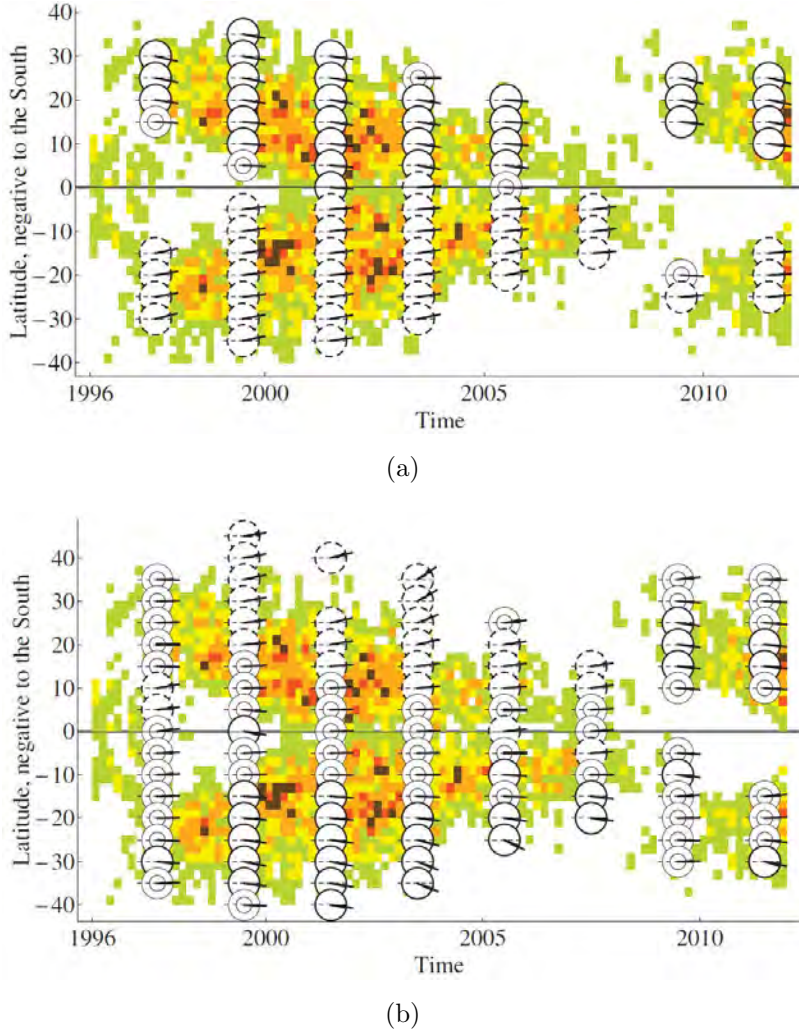


Fig. 13.— Figure of Solar Cycle 23 ( $B_{min} = 10$  G) reproduced with permission from Tlatov et al. (2013). The underlying butterfly diagram with color representing area does not change in (a) and (b). (a) Tilt angles are represented for larger sunspots with areas  $S > 300$  MSH from weighted MDI data. (b) Tilt angles are represented for smaller sunspots with areas  $50 < S < 300$  MSH for non-weighted MDI data. Circles indicate mean tilt angle. Solid (dashed) circles indicate positive (negative) mean tilt angle. Zero tilt does not belong to the confidence interval, unless a double circle is present. Tilt is positive (negative) if the tilt is clockwise (counterclockwise), regardless of hemisphere.

## 7. Discussion and Conclusions

We compared the statistics of a sunspot tilt angle catalog that utilizes magnetic polarity information to assign tilt angles from  $0 - 360^\circ$  (Mount Wilson and MDI, Li & Ulrich 2012) to

a traditional tilt angle catalog in which the range of values is  $\pm 90^\circ$  (DPD). Because historical tilt angle databases have not been capable of including anti-Hale information due to the lack of magnetograms or the unwillingness to incorporate the magnetogram information into a functional database, we paid particular attention to the anti-Hale statistics of bipolar sunspot regions. We summarize our findings as follows.

1. We find that  $8.4\% \pm 0.8\%$  of sunspot groups are anti-Hale from 1974-2012 as recorded in the Li & Ulrich data, so we assume DPD data have incorrect tilt angles for these regions since anti-Hale values are not possible in the DPD value range. The number of anti-Hale sunspots were found to be 9.0%, 8.7%, and 7.2% of the total number of sunspot groups in Solar Cycles 21, 22, and 23, respectively. Our reported 8.4% value of anti-Hale regions is higher than previous studies. This could simply be due to Wang & Sheeley (1989) and Stenflo & Kosovichev (2012) using active regions that were not sunspots whereas we only use sunspots. The number of anti-Hale regions at any given time is simply a fraction (see Figure 9(b)) of the total number of sunspots present, excepting the end of each cycle when spots are very near the equator (see point 4, this section) and the expected polarity or source hemisphere is unknown.
2. The average latitudes of anti-Hale regions are the same as all other sunspots for any given time in a solar cycle, meaning the average latitude of anti-Hale spots becomes more equatorward as the cycle progresses. The size distribution of anti-Hale sunspots is the same as the log-normal distribution of all sunspots. No area preferences emerge for anti-Hale regions.
3. We find that anti-Hale are just part of a broader distribution of tilt angles, possibly as a result of convective zone turbulence as previously proposed by many researchers. However, the misclassification of anti-Hale near the Equator is due to the heliographic equator not aligning with the magnetic equator. This is visible in the tilt angle distribution as a slight tendency for the anti-Hale regions to be tilted  $180^\circ$  from their expected Joy's law tilt angle.
4. Joy's law cannot be observed by eye in the tilt-butterfly diagrams (Figures 5 and 6) but must be teased out statistically by averaging over significant periods of time. This is evident by the lack of a smooth gradient in the color representing tilt angle in the butterfly wings when examining one hemisphere and one cycle. Even after averaging and binning, the trend in tilt angle shows discontinuous behavior in that the mean or median tilt angle will decrease on average for a period of years then increase again suddenly. This may be related to distinct dynamo waves that occur within the solar cycle (Ternullo, 2007).



5. Sunspots very near the equator are often assigned incorrect tilt angles due to the magnetic equator being offset a few degrees. For example, sunspots that have a northern hemispheric magnetic polarity and appear just below the heliographic equator (presumably because the northern hemisphere is ahead in the sunspot cycle and has reached the Equator first) are assigned tilt angles as if they are produced from the southern hemisphere polarity. Figure 9(a) shows an increase in anti-Hale near the end of each solar cycle. Within  $5^\circ$  of the equator, 65 out of 470 (13.8%) bipolar sunspot regions are anti-Hale. The end of Solar Cycle 20 produced 14.8% anti-Hale when sunspot activity is concentrated near the equator.

Example: an active region (NOAA11987/HARP3784) straddles the equator but its central latitude is calculated to be  $2^\circ$  in the southern hemisphere on 2014 February 24 (Figure 14(a)). DPD reported a tilt angle on that date to be  $-15.26^\circ$ . According to our definition, shown in Figure 4, the tilt angle should be  $15.26^\circ$ . The magnetogram in Figure 14(b) shows a magnetic orientation consistent with a northern hemisphere BMR for this solar cycle. It is probably that this region, slightly south of the equator, originated from magnetic dynamo activity in the northern hemisphere since the Northern hemisphere is leading the southern hemisphere and reached the equator first. Conversely, this region could have originated from dynamo action in the southern hemisphere with polarity orientation and tilt angle opposite from that anticipated via Joy’s law and Hale’s law. We suggest the former is more plausible. We propose assigning this region to the northern hemisphere based on tilt and polarity, with a caveat regarding latitude. Also note that this active region has a significant tilt angle, not a zero tilt angle as predicted by many versions of Joy’s law that forces the tilt to be zero at the equator. The practice of forcing Joy’s law to zero at the equator is not supported by observations. Doing so makes a huge difference in the slopes as reported in the literature and we find that there are, as often as not, BMRs with significant tilts at the equator.

6. The tilt angles of sunspot groups and associated scatter in the tilt angle values are crucial for the build up and reversals of the polar fields in surface flux transport simulations (Cameron et al. 2010; Cameron & Schüssler 2012). Recent efforts by Jiang et al. (2014) have shown that the tilt angle scatter constitutes a significant random factor in the variability of cycle strength. Therefore, we anticipate that the inclusion of the 8.4% of anti-Hale sunspots in surface flux transport models may allow for even greater cycle to cycle amplitude variability.

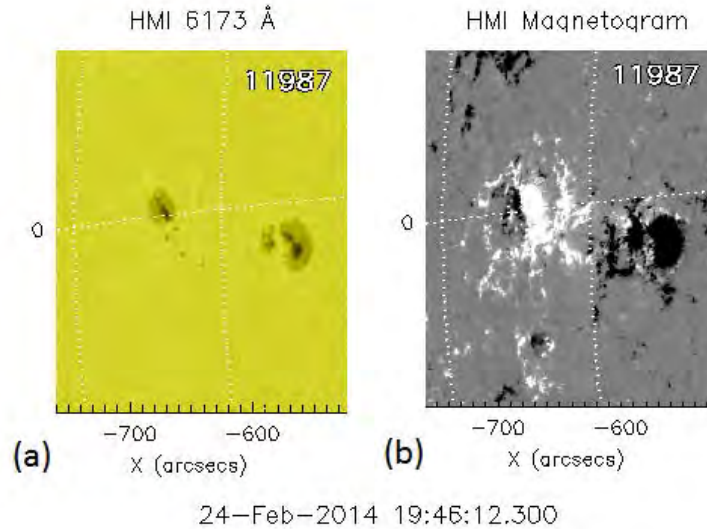


Fig. 14.— (a) White light intensity image and (b) magnetogram on 2014 February 24 of bipolar sunspot group NOAA11987 straddling the equator. The leading polarity of NOAA11987 is indicative of a northern hemisphere orientation for this solar cycle. DPD reported a tilt of umbral activity as  $-15.26^\circ$  whereas a northern hemisphere bipolar region of this orientation would be reported with a positive tilt angle.

From points 1 and 2, we conclude that the physical processes that produce anti-Hale regions are the same processes that produce sunspots obeying Hale’s polarity rules. Knowing that tilt angles have a high scatter, we conclude that the tails of the tilt angle distribution function are quite wide and therefore 8.4% of all spots can have angle  $\pm 90^\circ$  from the expected orientation. Of course, many questions about tilt angles and anti-Hale activity remain unanswered. There is, as always, more work to do.

## REFERENCES

- Baumann, I., & Solanki, S.K. 2005, *A&A*, 443, 1061
- Bogdan, T.J., Gilman, P.A., Lerche, I., & Howard, R. 1988, *ApJ*, 327, 451
- Cameron, R.H., Jiang, J., Schmitt, D., Schüssler, M. 2010, *ApJ*, 719, 264
- Cameron, R.H., Schüssler, M. 2012, *A&A*, 548, A57
- Carrington, R.C. 1858, *MNRAS*, 19, 1

- Dasi-Espuig, M., Solanki, S., Krivova, N., Cameron, R.H., & Penuela, T. 2010, *A&A*, 518, A7
- Gyóri, L., Baranyi, T., Ludmány, A. 2011, in *IAU Symp. 273, The Physics of Sun and Star Spots* (Cambridge: Cambridge Univ. Press), 403
- Hale, G.E., Ellerman, F., Nicholson, S.B., & Joy, A.H. 1919, *ApJ*, 49, 153
- Harvey, K. 1992, in *ASP Conf. Ser. 27, The Solar Cycle*, 335
- Hathaway, D.H., Nandy, D., Wilson, R.M., & Reichmann, E.J. 2003, *ApJ*, 589, 665
- Jiang, J., Cameron, R. H., Schüssler, M. 2014, *ApJ*, 791, 5
- Khlystova, A.I., & Sokoloff, D.D. 2009, *ARep.*, 53, 281
- Kosovichev, A.G., & Stenflo, J.O. 2008, *ApJL*, 688, L115
- Li, J., & Ulrich, R. 2012, *ApJ*, 758, 115
- Maunder, E.W. 1904, *MNRAS*, 64, 747
- Maunder, E.W. 1922, *MNRAS*, 82, 534
- McClintock, B.H., & Norton, A.A. 2013, *SoPh*, 287, 215
- McIntosh, S.W., Leamon, R.J., Gurman, J.B., et al., 2013, *ApJ*, 765, 146
- Norton, A.A., Charbonneau, P., & Passos, D., 2014, *SSRv.*, in press
- Richardson, R.S. 1948, *ApJ*, 107, 78
- Smith, S.F., & Howard, R. 1967, in *IAU Symp. 35, Structure and Development of Solar Active Regions*, ed. K.O. Kiepenheuer (Cambridge: Cambridge Univ. Press), 33
- Solanki, S.K., & Schmidt, H.U. 1993, *A&A*, 267, 287
- Spörer, G. 1890, *MNRAS*, 50, 251
- Stenflo, J.O., & Kosovichev, A.G. 2012, *ApJL*, 745, 129
- Ternullo, M. 2007, *MmSAI*, 78, 596
- Ternullo, M. 2010, *Ap&SS*, 328, 301
- Tlatov, A., Illarionov, E., Sokoloff, D., & Pipin, V. 2013, *MNRAS*, 432, 2975

Wang, Y.-M., & Sheeley, N.R. 1989, SoPh, 124, 81

Weber, M.A., Fan, Y., & Miesch, M.S. 2013, Sol. Phys., 287, 239

Zolotova, N.V., Ponyavin, D.I., Marwan, N., & Kurths, J., 2009, A&A, 503, 1

Zolotova, N.V., Ponyavin, D.I., Arlt, R., & Tuominen, I., 2010, AN, 331, 765