

Appendix B - VoIP SARRA Source Codes and Cisco XML Objects

1. Background Code (Non-Interface)

Class1.vb

```
Imports Microsoft.VisualBasic
Public Class Class1
    'THIS CLASS STORES THE USER NAME, PASSWORD AND SELECTED UNIT FOR THE
    'CURRENT USER LOGGED ONTO THE SYSTEM
    'THIS IS SO WE DONT NEED TO PASS THESE VALUES FROM PAGE TO PAGE

    Inherits System.Web.UI.Page

    Shared UserNameP As String
    Shared PasswordP As String
    Shared UnitP As String

    Public Sub setUser(ByVal userNew)
        UserNameP = userNew
    End Sub

    Public Sub setPass(ByVal passNew)
        PasswordP = passNew
    End Sub

    Public Sub setUnit(ByVal unitNew)
        UnitP = unitNew
    End Sub

    Public Function getUser()
        Return UserNameP
    End Function

    Public Function getPass()
        Return PasswordP
    End Function

    Public Function getUnit()
        Return UnitP
    End Function

End Class
```

Web.config

```
<?xml version="1.0"?>
<!--
    Note: As an alternative to hand editing this file you can use the
    web admin tool to configure settings for your application. Use
    the Website->Asp.Net Configuration option in Visual Studio.
    A full list of settings and comments can be found in
    machine.config.comments usually located in
    \Windows\Microsoft.Net\Framework\v2.x\Config
-->
<configuration>
    <appSettings/>
    <connectionStrings/>
```

```
<system.web>
  <!--
```

Set compilation debug="true" to insert debugging symbols into the compiled page. Because this affects performance, set this value to true only during development.

Visual Basic options:

Set strict="true" to disallow all data type conversions where data loss can occur.

Set explicit="true" to force declaration of all variables.

```
-->
```

```
  <compilation debug="false" strict="false" explicit="true">
```

```
    <assemblies>
```

```
      <add assembly="System.Data.OracleClient,
```

```
Version=2.0.0.0, Culture=neutral,
```

```
PublicKeyToken=B77A5C561934E089"/></assemblies></compilation>
```

```
  <pages>
```

```
    <namespaces>
```

```
      <clear/>
```

```
      <add namespace="System"/>
```

```
      <add namespace="System.Collections"/>
```

```
      <add namespace="System.Collections.Specialized"/>
```

```
      <add namespace="System.Configuration"/>
```

```
      <add namespace="System.Text"/>
```

```
      <add namespace="System.Text.RegularExpressions"/>
```

```
      <add namespace="System.Web"/>
```

```
      <add namespace="System.Web.Caching"/>
```

```
      <add namespace="System.Web.SessionState"/>
```

```
      <add namespace="System.Web.Security"/>
```

```
      <add namespace="System.Web.Profile"/>
```

```
      <add namespace="System.Web.UI"/>
```

```
      <add namespace="System.Web.UI.WebControls"/>
```

```
      <add
```

```
namespace="System.Web.UI.WebControls.WebParts"/>
```

```
      <add namespace="System.Web.UI.HtmlControls"/>
```

```
    </namespaces>
```

```
  </pages>
```

```
  <!--
```

The <authentication> section enables configuration of the security authentication mode used by ASP.NET to identify an incoming user.

```
-->
```

```
  <authentication mode="Windows"/>
```

```
  <!--
```

The <customErrors> section enables configuration of what to do if/when an unhandled error occurs during the execution of a request. Specifically, it enables developers to configure html error pages to be displayed in place of a error stack trace.

```
<customErrors mode="RemoteOnly" defaultRedirect="GenericErrorPage.htm">
```

```
  <error statusCode="403" redirect="NoAccess.htm" />
```

```
  <error statusCode="404" redirect="FileNotFound.htm" />
```

```
</customErrors>
```

```
-->
```

```
</system.web>
```

```
</configuration>
```


&
"E9B53FE4FC2D7F2D77FFFFFFFF145E8F4FFF4FC5CBF5CBFFFFFFFF392D9F1BFF8
FC7DBF6DBFFFFFFFFEFE14" _
&
"6DD566FC8FC7C7518AF8FFFFFFFFBFFFFBFBFBBFBBBFBFFFFFFFFFFFFFFFF
EFFFFFFFFFFFFFFFFF" _
&
"FFFFFFFFFFFFFFFFFFFFFFFFBFB81A999999999999D9FFFFFFFFF3F0090AA666
6665655591FFFFFFFF" _
&
"1F0040FEFEEEEEAEAA9ADAF000000B0000A0ABAAAA66666696FFFFFFFF0100000
05454554444480FFFEFFB" _
&
"F000000090BF16A1BBAAAFFFFF2F401A00000000000580DAFFFFF3FF87F00000
00000000091FFFFF" _
&
"FFFEFF0000000000100080FFFFFFFFF03000000000A02690FFFFFFFFEFFFF0B0000
00000405585FFFFF" _
&
"FFFFFFFF0B000000000505695FFFFFFFFEFFF0B000000000A09AD9FFFFFFFFF1F00
00000100A466A6FFFFF" _
&
"FFFFFFFFEF1F0000800700444484FFFFFFFFF0300BBFF0F00A9AAAFFFFFFFFF6E0
0D0FFF2F00A4A9D9FFF" _
&
"FFFFFFFF2F19F9FFFFBF50401191FFFFFFFFF0F8BFFFFFFFFFC1439999FFFFFFFF4F87
FFFFFFFF8292AAAFF" _
&
"FFFFFFFFECB1FEFEFEBFB80909595FFFEFFFFFCBBF10FFFF1B29555595FFFFFFFFFC
BFFDAFFFFC20F9AAA99F" _
&
"FFFFFFFFF4BFFFFFBFF48BAA6A96FFFFFFFFF4FFFFFFFF2FFC4A554584FEFFFFFFFF
FFFFFFFFBFFFDDBFFFFFFF" _
&
"FFFFFFFFFFFFFFFFFFFFEFFF
EFEFEFFFFEFFFFFFFFF" _
&
"FFFFFFFF7F9FFFFFFFFFFFFFFFFFFFFFFFFF6FACAE9F9FAD9EBA9E9BAEF9FFFFFF
7F3D5D1317351A355D0759" _
&
"F6FFFFFF7F7C94822E3E2E7D9C4E4EF9FEFFF7F7C821B3F3F3E3EAD5F1FFAFFFFFFF6
F7C8A262E2E3D7D884F4" _
&
"FE6FFFFFF7F7AAFA77F7F7EBEE6AF6FF6FFFFFFFFFFFFFFFFEFFFFFFEFFFFFFEFFFF
FFFFFFFFFFFFFFFFF" _
&
"FFFFFFFFFFFFFFFFEFFFFEFFFFEFFFFEFFFFEFFFFEFFFFEFFFFEFFFFEFFFFE
FFFFFFFFEFFFFEFFF" _
&
"FFFFFFEFFFFBF66FEFA6F6F7AFFFFFFFFFFFFFFFF3F1DDAA48D8F1DDAAA896ADA
FFFFFF3F278221C84B478325" _
&
"5421D2FFFFFFE2F208114C4474180044484D2FFFEFFFFFFFFFFFFFFFFBFFFFFFFFBFFF
FEFFFFFFEFFFFFFFFF" _
&
"FFEFFFFFFEFFFFFFEFFFFFFEFFF
FFFFFFFFFFFFFFFFF" _
&
"FFFFFFFFFFFFFBEEEEFEFFFFFFFFFEFFFFFFEFF73FC56FFFFFFFF7FEFFFFE3F
F7FF02890886840849EF2" _

```

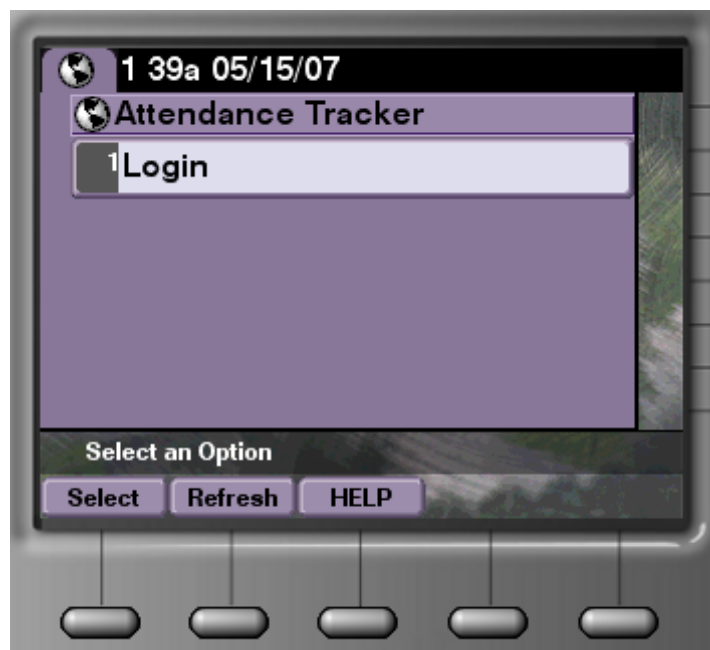
&
"F0952842021FC12820882500AC29B1B0623622011FD59D689D6655BD6EF674A66A69459
FDFFFFFFFFFFFFFFFF" _
&
"FFFFFFFFFFFFFFFFFEFEFFFFFFFFFFFFFFFFFFFFFFFFFFFFFFFFFFFFFFFFFFFFFFFFFFFFFFF
FFFFFFEFFFFFFFFFFFFFFE" _
& "FFFFFFFFEFFFFFFFFFFFFFFFFFFFFFFFFFFFFFFFFFFFFFFFFFFFFF</Data>" +
Environment.NewLine()
Response.Write("</CiscoIPPhoneImage>" + Environment.NewLine())

```

End Sub

End Class

3. Login Menu



This is the initial menu after the splash screen. The user must press the select button to execute the logo page script. HELP will provide the user with assistance on how to login. Refresh will refresh the screen. This screen could have extra options added to the menu or be omitted from future releases.

StartPage.aspx

```

<% @ Page Language="VB" AutoEventWireup="false" CodeFile="StartPage.aspx.vb" Inherits="_Default"
%>

```

StartPage.aspx.vb

```

Imports System.Data
Imports System.Data.OracleClient
Partial Class _Default : Inherits Class1

    Public dbOrds As New OracleConnection

    Public Sub Close_Connection()

```

```

    dbOrds.Close()
End Sub

Protected Sub Page_Load(ByVal sender As Object, ByVal e As System.EventArgs) Handles Me.Load
    ' THIS IS A STRAIT FORWARD MENU TO DISPLAY THE LOGIN OPTION IN THE
    NEXT VERSION OF THE APPLICATION
    ' THIS WILL BE REPLACED WITH THE REQUIRED "TAFE", "DEGREE",
    "APPRENTICE" OPTIONS

    Response.ContentType = "text/xml"

    Response.Write("<CiscoIPPhoneMenu>" + Environment.NewLine())
    Response.Write("<Title>VoIP SARRA</Title>" + Environment.NewLine())
    Response.Write("<Prompt>Select an Option</Prompt>" + Environment.NewLine())
    Response.Write("<MenuItem>" + Environment.NewLine())
    Response.Write("    <Name>Login</Name>" + Environment.NewLine())
    Response.Write("    <URL>http://192.168.57.10/logIn.aspx</URL>" +
Environment.NewLine())
    Response.Write("</MenuItem>" + Environment.NewLine())
    Response.Write("<SoftKeyItem>" + Environment.NewLine())
    Response.Write("    <Name>Select</Name>" + Environment.NewLine())
    Response.Write("    <URL>SoftKey:Select</URL>" + Environment.NewLine())
    Response.Write("    <Position>1</Position>" + Environment.NewLine())
    Response.Write("</SoftKeyItem>" + Environment.NewLine())
    Response.Write("<SoftKeyItem>" + Environment.NewLine())
    Response.Write("    <Name>Refresh</Name>" + Environment.NewLine())
    Response.Write("    <URL>SoftKey:Update</URL>" + Environment.NewLine())
    Response.Write("    <Position>2</Position>" + Environment.NewLine())
    Response.Write("</SoftKeyItem>" + Environment.NewLine())
    Response.Write("<SoftKeyItem>" + Environment.NewLine())
    Response.Write("    <Name>Back</Name>" + Environment.NewLine())
    Response.Write("    <URL>SoftKey:Exit</URL>" + Environment.NewLine())
    Response.Write("    <Position>3</Position>" + Environment.NewLine())
    Response.Write("</SoftKeyItem>" + Environment.NewLine())
    Response.Write("<SoftKeyItem>" + Environment.NewLine())
    Response.Write("    <Name>HELP</Name>" + Environment.NewLine())
    Response.Write("    <URL>http://192.168.57.10/HelpLogIn.aspx</URL>" +
Environment.NewLine())
    Response.Write("    <Position>3</Position>" + Environment.NewLine())
    Response.Write("</SoftKeyItem>" + Environment.NewLine())
    Response.Write("</CiscoIPPhoneMenu>" + Environment.NewLine())

    ' FOR WHATEVER REASON THE DB CONNECTION WAS NOT CLOSING AT
    SOME POINT IN THE APLICATION
    ' SO I DECIDED TO CLOSE IT ON THE START PAGE TO MAKE SURE OF A
    CLEAN START
    Close_Connection()

End Sub

End Class

```

4. Login



Login.aspx

```
<% @ Page Language="VB" AutoEventWireup="false" CodeFile="Login.aspx.vb" Inherits="_Default" %>
```

Login.aspx.vb

Partial Class _Default : Inherits Class1

Protected Sub Page_Load(ByVal sender As Object, ByVal e As System.EventArgs) Handles Me.Load

' THIS IS A STRAIT FORWARD XML FILE THAT DISPLAYS AN INPUT SCREEN
FOR THE USER NAME AND PASSWORD
' THE VALUES ARE PASSED TO THE NEXT SCREEN THEN STORED AS
CLASS1.VB VARIABLES

```
Response.ContentType = "text/xml"

Response.Write("<CiscoIPPhoneInput>" + Environment.NewLine())
Response.Write("<Title>VoIP SARRA</Title>" + Environment.NewLine())
Response.Write("<Prompt>Select an Option</Prompt>" + Environment.NewLine())
Response.Write("<URL>http://192.168.57.10/DBConnect.aspx</URL>" +
Environment.NewLine())
Response.Write("    <FormItem>" + Environment.NewLine())
Response.Write("        <DisplayName>User Name</DisplayName>" +
Environment.NewLine())
Response.Write("        <QueryStringParam>userName</QueryStringParam>" +
Environment.NewLine())
Response.Write("        <DefaultValue></DefaultValue>" +
Environment.NewLine())
Response.Write("        <InputFlags>A</InputFlags>" + Environment.NewLine())
Response.Write("    </FormItem>" + Environment.NewLine())
Response.Write("    <FormItem>" + Environment.NewLine())
Response.Write("        <DisplayName>Password</DisplayName>" +
Environment.NewLine())
```

```

    Response.Write("    <QueryStringParam>password</QueryStringParam>" +
Environment.NewLine())
    Response.Write("    <DefaultValue></DefaultValue>" + Environment.NewLine())
    Response.Write("    <InputFlags>AP</InputFlags>" + Environment.NewLine())
    Response.Write("    </InputItem>" + Environment.NewLine())
    Response.Write("<SoftKeyItem>" + Environment.NewLine())
    Response.Write("    <Name>Submit</Name>" + Environment.NewLine())
    Response.Write("    <URL>SoftKey:Submit</URL>" + Environment.NewLine())
    Response.Write("    <Position>1</Position>" + Environment.NewLine())
    Response.Write("</SoftKeyItem>" + Environment.NewLine())
    Response.Write("<SoftKeyItem>" + Environment.NewLine())
    Response.Write("    <Name>Clear</Name>" + Environment.NewLine())
    Response.Write("    <URL>SoftKey:&lt;&lt;</URL>" + Environment.NewLine())
    Response.Write("    <Position>2</Position>" + Environment.NewLine())
    Response.Write("</SoftKeyItem>" + Environment.NewLine())
    Response.Write("<SoftKeyItem>" + Environment.NewLine())
    Response.Write("    <Name>Back</Name>" + Environment.NewLine())
    Response.Write("    <URL>http://192.168.57.10/StartPage.aspx</URL>" +
Environment.NewLine())
    Response.Write("    <Position>3</Position>" + Environment.NewLine())
    Response.Write("</SoftKeyItem>" + Environment.NewLine())
    Response.Write("<SoftKeyItem>" + Environment.NewLine())
    Response.Write("    <Name>HELP</Name>" + Environment.NewLine())
    Response.Write("    <URL>http://192.168.57.10/HelpLogIn2.aspx</URL>" +
Environment.NewLine())
    Response.Write("    <Position>4</Position>" + Environment.NewLine())
    Response.Write("</SoftKeyItem>" + Environment.NewLine())
    Response.Write("</CiscoIPPhoneInput>" + Environment.NewLine())
End Sub
End Class

```

5. Class Selection Menu



DBConnect.aspx


```
<%@ Page Language="VB" AutoEventWireup="false" CodeFile="DBConnect.aspx.vb"
Inherits="_Default" aspcompat="true" Debug="true" %>
```

```
<%
' GET THE DATA OUT OF THE LOGIN SCREEN AND STORE IT IN THE CLASS1.VB
VARIABLES
' SO THE WHOLE APPLICATION KNOWS THE USER NAME AND PASSWORD
Dim userN, password2 As String
Try
    userN = Request.QueryString(0)
    setUser(userN)
    password2 = Request.QueryString(1)
    setPass(password2)
Catch e As Exception
    'do nothing
End Try

' CALL THE FUNCTION TO CREATE THIS PAGE
Connect()
%>
```

DBConnect.aspx.vb

```
Imports System.Data
Imports System.Data.OracleClient

Partial Class _Default : Inherits Class1

    Public dbOrds As New OracleConnection

    Public Sub Open_Connection()
        Dim ConStr As String

        ' ORACLE CONECTION STRING ALLOWING THE USER ACCESS TO THE
        DATABASE
        ' PROVIDING THE USERNAME AND PASSWORD ARE CORRECT
        ConStr = "data source=U01;User ID=" & getUser() & ";Password=" & getPass() & ";"

        dbOrds = New OracleConnection(ConStr)
        dbOrds.Open()
    End Sub

    Public Sub Close_Connection()
        dbOrds.Close()
    End Sub

    Protected Sub Connect()

        Dim SQLStmt As String
        Dim cmd As New OracleCommand
        Dim dReader As OracleDataReader

        ' CLEAR THE CONTENSE I THE DUMMY TABLE
        DeleteDUMMY_REG()

        ' OPEN THE DB
        Open_Connection()

        ' GET THE DETAILS FOR THE CALSS INFORMATION USING THE USER AND
        DATE/TIME
```

```

SQLStmt = " SELECT unitcode, groupcode , SCHED_DATE_TIME " _
& "FROM SNOCKER.TIMETABLE where upper(TeacherID) = upper('" & getUser() & "'"
"
-
& "and to_date(sched_date_time,'DD-MON-YY') = to_date(SYSDATE,'DD-MON-YY') "
-
& "order by sched_date_time"

cmd = New OracleCommand(SQLStmt, dbOrds)

' CREATE A RECORD SET OF THE INFORMATION IN THE SQL STATEMENT
dReader = cmd.ExecuteReader()

' IF THERE ARE NO ROWS IN THE RECORD SET THE OUTPUT TO THE SCREEN
WILL BE BLANK

' IF THERE ARE ROWS IN THE RECORD SET THE OUTPUT TO THE SCREEN
WILL CONTINUE TO BE CREATED
Response.ContentType = "text/xml"
Response.Write("<CiscoIPPhoneMenu>" + Environment.NewLine())
Response.Write("<Title>Class List for " & getUser() & "</Title>" +
Environment.NewLine())
Response.Write("<Prompt>Select an Option</Prompt>")

' CALL A FUNCTION TO GET THE DATA OUT OF THE DB
Response.Write(RS2XML(dReader, "MenuItem"))

' CONTINUE THE OUTPUT TO THE PHONE
Response.Write("<SoftKeyItem>" + Environment.NewLine())
Response.Write("<Name>Select</Name>" + Environment.NewLine())
Response.Write("<URL>SoftKey:Select</URL>" + Environment.NewLine())
Response.Write("<Position>1</Position>" + Environment.NewLine())
Response.Write("</SoftKeyItem>" + Environment.NewLine())
Response.Write("<SoftKeyItem>" + Environment.NewLine())
Response.Write("<Name>Refresh</Name>" + Environment.NewLine())
Response.Write(" <URL>SoftKey:Update</URL>" + Environment.NewLine())
Response.Write("<Position>2</Position>" + Environment.NewLine())
Response.Write("</SoftKeyItem>" + Environment.NewLine())
Response.Write("<SoftKeyItem>" + Environment.NewLine())
Response.Write(" <Name>Back</Name>" + Environment.NewLine())
Response.Write(" <URL>http://192.168.57.10/Login.aspx</URL>" +
Environment.NewLine())
Response.Write(" <Position>3</Position>" + Environment.NewLine())
Response.Write("</SoftKeyItem>" + Environment.NewLine())
Response.Write("<SoftKeyItem>" + Environment.NewLine())
Response.Write(" <Name>QUIT</Name>" + Environment.NewLine())
Response.Write(" <URL>http://192.168.57.10/StartPage.aspx</URL>" +
Environment.NewLine())
Response.Write(" <Position>4</Position>" + Environment.NewLine())
Response.Write("</SoftKeyItem>" + Environment.NewLine())
Response.Write("</CiscoIPPhoneMenu>" + Environment.NewLine())

'CLOSE THE CONNECTION
Close_Connection()
End Sub

Function RS2XML(ByVal dReader As OracleDataReader, ByVal ChildNode As String)
Dim url, UnitCode As String

RS2XML = ""

```

' THE MENU SCREEN CAN ONLY HANDLE ALOT OF RECORDS AT A TIME
THERE IS NO NEED TO LIMIT THE OUTPUT

While dReader.Read

If ChildNode <> "" Then RS2XML = RS2XML & "<" & ChildNode & ">" & "<Name>"

' PASS THE UNIT CODE TO THE NEXT SCREEN SO IT CAN BE STORED AS A
CLASS1.VB VARIABLE

url = "http://192.168.57.10/SelectDBInput.aspx?unitcode" & dReader("unitcode")

RS2XML = RS2XML & dReader("unitcode") & ", " & dReader("groupcode") & ", " &
dReader("SCHED_DATE_TIME")

If ChildNode <> "" Then RS2XML = RS2XML & "</Name>" +
Environment.NewLine() + "<URL>" & url & "</URL>" + Environment.NewLine() + "</" &
ChildNode & ">"

End While

End Function

Protected Sub DeleteDUMMY_REG()

'THIS FUNCTION DELETES THE DATA OUT OF THE DUMMY TABLE

Dim SQLStmnt2

Dim cmd2 As New OracleCommand

SQLStmnt2 = "Delete snocker.DUMMY_REG"

Open_Connection()

cmd2 = New OracleCommand(SQLStmnt2, dbOrds)

cmd2.ExecuteNonQuery()

Close_Connection()

cmd2 = Nothing

End Sub

End Class

6. Class Submit/Update Menu



SelectDBInput.aspx

```

<%@ Page Language="VB" AutoEventWireup="false" CodeFile="SelectDBInput.aspx.vb"
Inherits="SelectDBInput" %>

<%
' GET THE DATA OUT OF THE UNIT SELECTION SCREEN AND STORE IT IN THE
CLASS1.VB VARIABLE
' SO THE WHOLE APPLICATION KNOWS THE UNIT
Dim unit As String
Try
    unit = Request.QueryString(0)
    setUnit(unit)
Catch As Exception
    'do nothing
End Try
%>

```

SelectDBInput.aspx.vb

```

Imports System.Data
Imports System.Data.OracleClient

```

Partial Class SelectDBInput : Inherits Class1

```

Protected Sub Page_Load(ByVal sender As Object, ByVal e As System.EventArgs) Handles
Me.Load

```

```

' THIS IS A STRAIT FORWARD XML FILE THAT DISPLAYS A MENU SCREEN
FOR THE 3 CHOICES OF WHAT THE TEACHER CAN DO
' TAKE ATTENDANCE, UPDATE ATTENDANCE, SAVE ATTENDANCE INFO

```

```

Response.ContentType = "text/xml"

Response.Write("<CiscoIPPhoneMenu>" + Environment.NewLine())
Response.Write("<Title>VoIP SARRA</Title>" + Environment.NewLine())
Response.Write("<Prompt>Select an Option</Prompt>" + Environment.NewLine())
Response.Write("<MenuItem>" + Environment.NewLine())
Response.Write("    <Name>TAKE ATTENDANCE</Name>" +
Environment.NewLine())
Response.Write("    <URL>http://192.168.57.10/ClassTimesInsert.aspx</URL>" +
Environment.NewLine())
Response.Write("</MenuItem>" + Environment.NewLine())
Response.Write("<MenuItem>" + Environment.NewLine())
Response.Write("    <Name>UPDATE ATTENDANCE</Name>" +
Environment.NewLine())
Response.Write("    <URL>http://192.168.57.10/ClassTimesUpdate.aspx</URL>" +
Environment.NewLine())
Response.Write("</MenuItem>" + Environment.NewLine())
Response.Write("<MenuItem>" + Environment.NewLine())
Response.Write("    <Name>SAVE ATTENDANCE INFO</Name>" +
Environment.NewLine())
Response.Write("    <URL>http://192.168.57.10/SubmitData.aspx</URL>" +
Environment.NewLine())
Response.Write("</MenuItem>" + Environment.NewLine())
Response.Write("<SoftKeyItem>" + Environment.NewLine())
Response.Write("    <Name>Select</Name>" + Environment.NewLine())
Response.Write("    <URL>SoftKey:Select</URL>" + Environment.NewLine())
Response.Write("    <Position>1</Position>" + Environment.NewLine())
Response.Write("</SoftKeyItem>" + Environment.NewLine())
Response.Write("<SoftKeyItem>" + Environment.NewLine())
Response.Write("    <Name>Refresh</Name>" + Environment.NewLine())

```

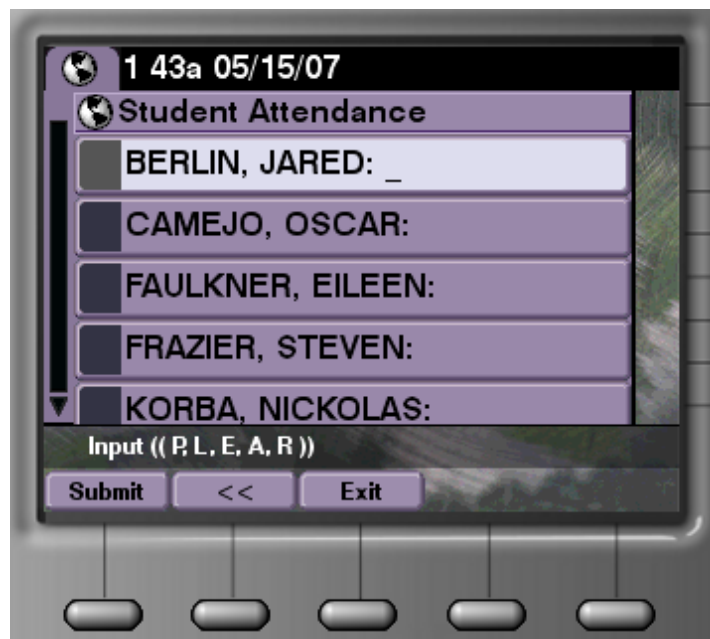
```

Response.Write("    <URL>SoftKey:Update</URL>" + Environment.NewLine())
Response.Write("    <Position>2</Position>" + Environment.NewLine())
Response.Write("</SoftKeyItem>" + Environment.NewLine())
Response.Write("<SoftKeyItem>" + Environment.NewLine())
Response.Write("    <Name>Back</Name>" + Environment.NewLine())
Response.Write("    <URL>http://192.168.57.10/DBConnect.aspx</URL>" +
Environment.NewLine())
Response.Write("    <Position>3</Position>" + Environment.NewLine())
Response.Write("</SoftKeyItem>" + Environment.NewLine())
Response.Write("<SoftKeyItem>" + Environment.NewLine())
Response.Write("    <Name>HELP</Name>" + Environment.NewLine())
Response.Write("    <URL>http://192.168.57.10/HelpLogIn4.aspx</URL>" +
Environment.NewLine())
Response.Write("    <Position>4</Position>" + Environment.NewLine())
Response.Write("</SoftKeyItem>" + Environment.NewLine())
Response.Write("</CiscoIPPhoneMenu>" + Environment.NewLine())
End Sub

```

End Class

7. Student Insert Input



ClassTimesInsert.aspx

```

<%@ Page Language="VB" AutoEventWireup="false" CodeFile="ClassTimesInsert.aspx.vb"
Inherits="_Default" aspcompat="true" debug="true"%>

```

ClassTimesInsert.aspx.vb

```
Imports System.Data
```

```
Imports System.Data.OracleClient
```

```
Partial Class _Default : Inherits Class1
```

```
    Public dbOrds As New OracleConnection
```

```

Public Sub Open_Connection()
    Dim ConStr As String
    ' ORACLE CONECTION STRING ALLOWING THE USER ACCESS TO THE
DATABASE
    ' PROVIDING THE USERNAME AND PASSWORD ARE CORRECT
    ConStr = "data source=U01;User ID=" & getUser() & ";Password=" & getPass() & ";"

    dbOrds = New OracleConnection(ConStr)
    dbOrds.Open()
End Sub

Public Sub Close_Connection()
    dbOrds.Close()
End Sub

Protected Sub Page_Load(ByVal sender As Object, ByVal e As System.EventArgs) Handles
Me.Load
    Dim SQLStmt
    Dim cmd As New OracleCommand
    Dim dReader As OracleDataReader
    Dim SqlErr As Boolean

    ' OPEN THE CONNECTION TO THE DB
    Open_Connection()

    ' SQL STATEMENT SELECTS ALL THE DATA NEEDED TO DISPLAY STUDENT
DETAILS FOR A PARTICLUAR UNIT AND TIME AND MAKING
    ' SURE THE DATA FOR THIS STUDENT HASN'T ALREADY BEEN ENTERED INTO
THE DATABASE FOR THIS UNIT AND TIME.
    SQLStmt = "SELECT student.SFIRST_NAME, student.SLAST_NAME,
student.STUDENTID, timetable.TIMETABLEID, sysdate, " _
        & "(select registerno " _
        & "from snocker.UNIT_REG " _
        & "where upper(unitcode) = upper('" & getUnit() & "')) AS registerno " _
        & "FROM snocker.student, snocker.timetable, snocker.student_unit " _
        & "WHERE student.STUDENTID = student_unit.STUDENTID " _
        & "AND student_unit.unitcode = timetable.unitcode " _
        & "AND upper(student_unit.unitcode) = upper('" & getUnit() & "') " _
        & "AND to_date(timetable.sched_date_time,'DD-MON-YY') = to_date(SYSDATE,'DD-
MON-YY') " _
        & "AND student.STUDENTID NOT IN (select studentid " _
        & "from(snocker.STUDENT_REGISTER) " _
        & "where TIMETABLEID in (select TIMETABLEID " _
        & "from snocker.timetable " _
        & "where upper(unitcode) = upper('" & getUnit() & "')) " _
        & "and to_CHAR(ATTEND_DATE,'DD-MON-YY') = to_CHAR(SYSDATE,'DD-
MON-YY') " _
        & "and REGISTERNO = (select registerno " _
        & "from snocker.UNIT_REG " _
        & "where upper(unitcode) = upper('" & getUnit() & "')) " _
        & "AND student.STUDENTID NOT IN (select studentid " _
        & "from(snocker.TEMP_REG) " _
        & "where TIMETABLEID in (select TIMETABLEID " _
        & "from snocker.timetable " _
        & "where upper(unitcode) = upper('" & getUnit() & "')) " _
        & "and to_CHAR(ATTEND_DATE,'DD-MON-YY') = to_CHAR(SYSDATE,'DD-
MON-YY') " _
        & "and REGISTERNO = (select registerno " _
        & "from snocker.UNIT_REG " _
        & "where upper(unitcode) = upper('" & getUnit() & "')) " _

```

```

    & "order by SLAST_NAME"

cmd = New OracleCommand(SQLStmnt, dbOrds)

' CREATE A RECORD SET OF THE INFORMATION IN THE SQL STATEMENT
dReader = cmd.ExecuteReader()

' IF THERE ARE NO ROWS IN THE RECORD SET GO BACK TO THE PREVIOUS
PAGE
If dReader.HasRows = False Then
    Response.Redirect("http://192.168.57.10/SelectDBInput.aspx")
Else

    ' IF THERE ARE RECORDS TO BE DISPLAYED CREATE AN INPUT SCREEN
FOR THE PHONE
    Response.ContentType = "text/xml"
    Response.Write("<CiscoIPPhoneInput>" + Environment.NewLine())
    Response.Write("<Title>Student Attendance</Title>" + Environment.NewLine())
    Response.Write("<Prompt>Input (( P, L, E, A, R ))</Prompt>" +
Environment.NewLine())
    Response.Write("<URL>http://192.168.57.10/InstertDB.aspx</URL>" +
Environment.NewLine())

    ' CALL A FUNCTION TO GET THE DATA OUT OF THE DB
    Response.Write(RS2XML(dReader, "InputItem"))

    ' CONTINUE THE OUTPUT TO THE PHONE
    Response.Write("<SoftKeyItem>" + Environment.NewLine())
    Response.Write(" <Name>Submit</Name>" + Environment.NewLine())
    Response.Write(" <URL>SoftKey:Submit</URL>" + Environment.NewLine())
    Response.Write(" <Position>1</Position>" + Environment.NewLine())
    Response.Write("</SoftKeyItem>" + Environment.NewLine())
    Response.Write("<SoftKeyItem>" + Environment.NewLine())
    Response.Write(" <Name>Clear</Name>" + Environment.NewLine())
    Response.Write(" <URL>SoftKey:&lt;&lt;</URL>" + Environment.NewLine())
    Response.Write(" <Position>2</Position>" + Environment.NewLine())
    Response.Write("</SoftKeyItem>" + Environment.NewLine())
    Response.Write("<SoftKeyItem>" + Environment.NewLine())
    Response.Write(" <Name>Back</Name>" + Environment.NewLine())
    Response.Write(" <URL>http://192.168.57.10/SelectDBInput.aspx</URL>" +
Environment.NewLine())
    Response.Write(" <Position>3</Position>" + Environment.NewLine())
    Response.Write("</SoftKeyItem>" + Environment.NewLine())
    Response.Write("<SoftKeyItem>" + Environment.NewLine())
    Response.Write(" <Name>HELP</Name>" + Environment.NewLine())
    Response.Write(" <URL>http://192.168.57.10/HelpLogIn2.aspx</URL>" +
Environment.NewLine())
    Response.Write(" <Position>4</Position>" + Environment.NewLine())
    Response.Write("</SoftKeyItem>" + Environment.NewLine())
    Response.Write("</CiscoIPPhoneInput>" + Environment.NewLine())

    ' CLOSE THE CONNECTION TO THE DB
    Close_Connection()
    cmd = Nothing
End If

End Sub

Function RS2XML(ByVal dReader As OracleDataReader, ByVal ChildNode As String)
    Dim x As Integer

```

```

x = 1

RS2XML = ""

' THE INPUT SCREEN CAN ONLY HANDLE 5 RECORDS AT A TIME SO LIMIT
THE DATA OUTPUT TO THE PHONE.
While dReader.Read

    If x >= 6 Then
        Exit While
    End If

    If ChildNode <> "" Then
        RS2XML = RS2XML & "<" & ChildNode & ">" & "<DisplayName>"
    End If
    ' GET THE DATA OUT OF THE PHONE AND PLACE IT IN A STRING
    RS2XML = RS2XML & dReader("SLAST_NAME") & ", " &
dReader("SFIRST_NAME")

    If ChildNode <> "" Then
        RS2XML = RS2XML & "</DisplayName>" & "<QueryStringParam>AttendType" &
x & "</QueryStringParam>" _
        & "<DefaultValue></DefaultValue><InputFlags>U</InputFlags>" & "</" &
ChildNode & ">"
    End If
    ' INCRIMENT THE VALUE OF X AS OUR CHECK IF THE RECORDS ARE = TO 5
YET
    x = x + 1

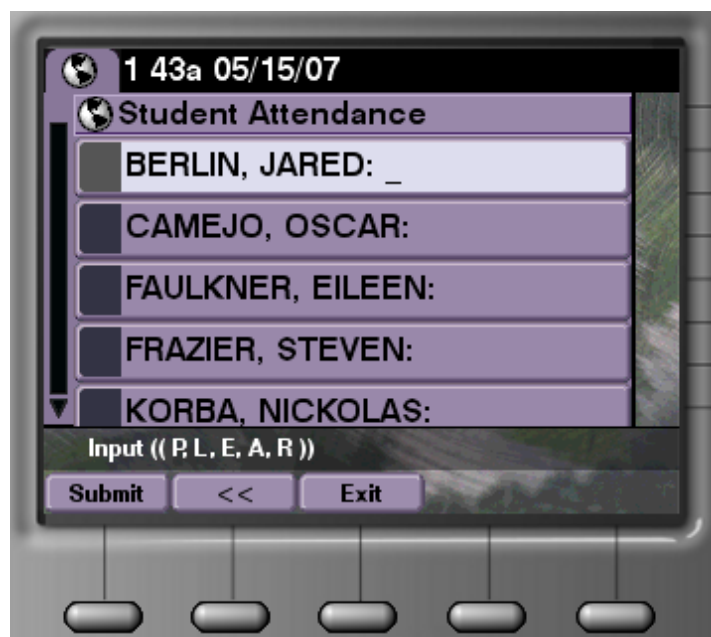
End While

End Function

End Class

```

8. Student Update Input



ClassTimesUpdate.aspx

```
<%@ Page Language="VB" AutoEventWireup="false" CodeFile="ClassTimesUpdate.aspx.vb"
Inherits="ClassTimesUpdate" debug="true" aspcompat="true"%>
```

ClassTimesUpdate.aspx.vb

```
Imports System.Data
Imports System.Data.OracleClient
Partial Class ClassTimesUpdate : Inherits Class1

    Public dbOrds As New OracleConnection

    Public Sub Open_Connection()
        Dim ConStr As String

        ' ORACLE CONECTION STRING ALLOWING THE USER ACCESS TO THE DATABASE
        ' PROVIDING THE USERNAME AND PASSWORD ARE CORRECT
        ConStr = "data source=U01;User ID=" & getUser() & ";Password=" & getPass() & ";"

        dbOrds = New OracleConnection(ConStr)
        dbOrds.Open()
    End Sub

    Public Sub Close_Connection()
        dbOrds.Close()
    End Sub

    Protected Sub Page_Load(ByVal sender As Object, ByVal e As System.EventArgs) Handles Me.Load
        Dim SQLStmt
        Dim cmd As New OracleCommand
        Dim dReader As OracleDataReader

        ' OPEN THE CONNECTION TO THE DB
        Open_Connection()

        ' GET THE STUDENT DETAILS FOR THE UNIT OUT OF THE TEMP TABLE AND
        AND MAKING
        ' SURE THE DATA FOR THIS STUDENT HASN'T ALREADY BEEN ENTERED INTO
        THE DATABASE FOR THIS UNIT AND TIME.
        SQLStmt = "SELECT Student.SLAST_NAME, Student.SFIRST_NAME,
TEMP_REG.STUDENTID, TEMP_REG.REGISTERNO, TEMP_REG.ATTENDENCEID,
TEMP_REG.TIMETABLEID, TEMP_REG.ATTEND_DATE " _
        & "FROM snocker.TEMP_REG, snocker.Student " _
        & "Where TEMP_REG.STUDENTID = Student.STUDENTID " _
        & "And TIMETABLEID IN (SELECT TIMETABLEID from snocker.TIMETABLE
where Upper(TEACHERID) = Upper("'" & getUser() & "'" " _
        & "and Upper(UNITCODE) = Upper("'" & getUnit() & "'" " _
        & "AND TEMP_REG.STUDENTID NOT IN (SELECT STUDENTID FROM
snocker.DUMMY_REG " _
        & "Where TIMETABLEID IN (SELECT TIMETABLEID from snocker.TIMETABLE
where Upper(TEACHERID) = Upper("'" & getUser() & "'" " _
        & "and Upper(UNITCODE) = Upper("'" & getUnit() & "')))" _
        & "ORDER BY Student.SLAST_NAME"

        cmd = New OracleCommand(SQLStmt, dbOrds)

        ' CREATE A RECORD SET OF THE INFORMATION IN THE SQL STATEMENT
        dReader = cmd.ExecuteReader()
```

```

' IF THERE ARE NO ROWS IN THE RECORD SET UPDATE THE TEMP TABLE
WITH THE DUMMY TABLE
' THEN DELETE THE DUMMY TABLE INFORMATION
If dReader.HasRows = False Then
    Close_Connection()

    Dim SQLStmt4 As String
    Dim cmd4 As New OracleCommand
    Dim dReader2 As OracleDataReader
    SQLStmt4 = "SELECT DUMMY_REG.STUDENTID, DUMMY_REG.REGISTERNO,
DUMMY_REG.ATTENDENCEID, DUMMY_REG.TIMETABLEID,
DUMMY_REG.ATTEND_DATE " _
        & "FROM snocker.DUMMY_REG"
    Open_Connection()

    cmd4 = New OracleCommand(SQLStmt4, dbOrds)
    dReader2 = cmd4.ExecuteReader()

    Dim SQLStmt3 As String
    Dim cmd3 As New OracleCommand

    While dReader2.Read
        Try
            SQLStmt3 = "update snocker.TEMP_REG set ATTENDENCEID = " &
dReader2("ATTENDENCEID") & " where STUDENTID = " & dReader2("STUDENTID") &
" and REGISTERNO = " & dReader2("REGISTERNO") & " and TIMETABLEID = " &
dReader2("TIMETABLEID") & ""
            cmd3 = New OracleCommand(SQLStmt3, dbOrds)
            cmd3.ExecuteNonQuery()

            Catch ex As OracleException
                Response.Write(ex.Message)
            End Try
        End While

    cmd3 = Nothing

    Close_Connection()

    DeleteDUMMY_REG()
    Response.Redirect("http://192.168.57.10/SelectDBInput.aspx")

Else
' IF THERE ARE RECORDS TO BE DISPLAYED CREATE AN INPUT SCREEN FOR THE
PHONE
    Response.ContentType = "text/xml"
    Response.Write("<CiscoIPPhoneInput>" + Environment.NewLine())
    Response.Write("<Title>Student Attendance</Title>" + Environment.NewLine())
    Response.Write("<Prompt>Input (( P, L, E, A, R ))</Prompt>" + Environment.NewLine())
    Response.Write("<URL>http://192.168.57.10/UpdateDB.aspx</URL>" +
Environment.NewLine())

' CALL A FUNCTION TO GET THE DATA OUT OF THE DB
    Response.Write(RS2XML(dReader, "InputItem"))

' CONTINUE THE OUTPUT TO THE PHONE
    Response.Write("<SoftKeyItem>" + Environment.NewLine())
    Response.Write(" <Name>Submit</Name>" + Environment.NewLine())
    Response.Write(" <URL>SoftKey:Submit</URL>" + Environment.NewLine())

```

```

Response.Write(" <Position>1</Position>" + Environment.NewLine())
Response.Write("</SoftKeyItem>" + Environment.NewLine())
Response.Write("<SoftKeyItem>" + Environment.NewLine())
Response.Write(" <Name>Clear</Name>" + Environment.NewLine())
Response.Write(" <URL>SoftKey:&lt;&lt;</URL>" + Environment.NewLine())
Response.Write(" <Position>2</Position>" + Environment.NewLine())
Response.Write("</SoftKeyItem>" + Environment.NewLine())
Response.Write("<SoftKeyItem>" + Environment.NewLine())
Response.Write(" <Name>Back</Name>" + Environment.NewLine())
Response.Write(" <URL>http://192.168.57.10/SelectDBInput.aspx</URL>" +
Environment.NewLine())
Response.Write(" <Position>3</Position>" + Environment.NewLine())
Response.Write("</SoftKeyItem>" + Environment.NewLine())
Response.Write("<SoftKeyItem>" + Environment.NewLine())
Response.Write(" <Name>HELP</Name>" + Environment.NewLine())
Response.Write(" <URL>http://192.168.57.10/HelpLogIn2.aspx</URL>" +
Environment.NewLine()) 'change help file later
Response.Write(" <Position>4</Position>" + Environment.NewLine())
Response.Write("</SoftKeyItem>" + Environment.NewLine())
Response.Write("</CiscoIPPhoneInput>" + Environment.NewLine())

'CLOSE THE CONNECTION
Close_Connection()
cmd = Nothing
dReader = Nothing
End If
End Sub

Function RS2XML(ByVal dReader As OracleDataReader, ByVal ChildNode As String)
Dim x As Integer
x = 1

RS2XML = ""

' THE INPUT SCREEN CAN ONLY HANDLE 5 RECORDS AT A TIME SO LIMIT THE DATA
OUTPUT TO THE PHONE.
While dReader.Read

If x >= 6 Then
Exit While
End If

If ChildNode <> "" Then
RS2XML = RS2XML & "<" & ChildNode & ">" & "<DisplayName>"
End If
' GET THE DATA OUT OF THE PHONE AND PLACE IT IN A STRING
RS2XML = RS2XML & dReader("SLAST_NAME") & ", " & dReader("SFIRST_NAME")

If ChildNode <> "" Then
' POPULATE TEH SCREEN WITH THE DATA THAT IS ALREADY IN THE TEMP TABLE
' THIS IS SO WE CAN UPDAT THE INFORMATION
RS2XML = RS2XML & "</DisplayName>" & "<QueryStringParam>AttendType" & x &
"</QueryStringParam>" _
& "<DefaultValue>" & dReader("ATTENDENCEID") &
"</DefaultValue><InputFlags>U</InputFlags>" & "</" & ChildNode & ">"
End If
' INCRIMENT THE VALUE OF X AS OUR CHECK IF THE RECORDS ARE = TO 5 YET
x = x + 1

End While

```

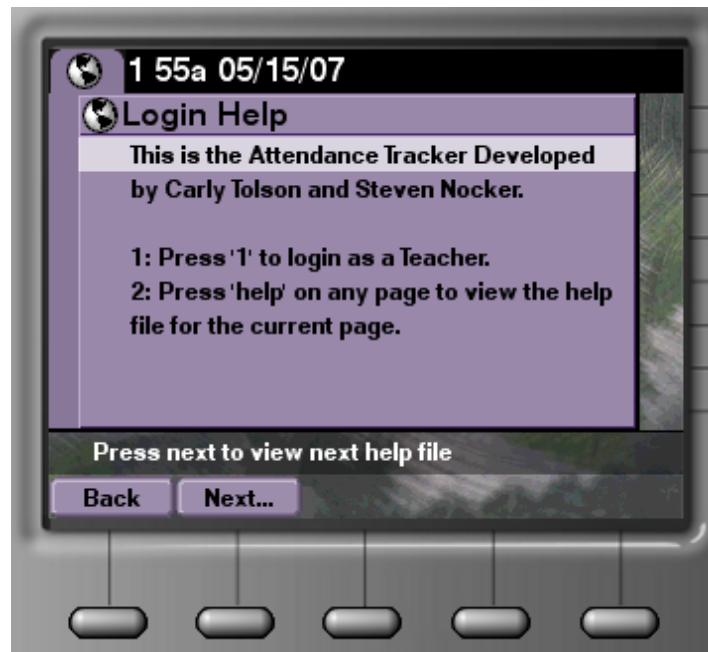
End Function

```
Protected Sub DeleteDUMMY_REG()  
    'THIS FUNCTION DELETES THE DATA OUT OF THE DUMMY TABLE  
    Dim SQLStmt2  
    Dim cmd2 As New OracleCommand  
    SQLStmt2 = "Delete snocker.DUMMY_REG"  
    Open_Connection()  
    cmd2 = New OracleCommand(SQLStmt2, dbOrds)  
    cmd2.ExecuteNonQuery()  
    Close_Connection()  
    cmd2 = Nothing
```

End Sub

End Class

9. Login Help



HelpLogin.aspx

```
<%@ Page Language="VB" AutoEventWireup="false" CodeFile="HelpLogin.aspx.vb"  
Inherits="HelpLogin" %>
```

HelpLogin.aspx.vb

```
Partial Class HelpLogin  
    Inherits System.Web.UI.Page
```

```
    Protected Sub Page_Load(ByVal sender As Object, ByVal e As System.EventArgs) Handles  
Me.Load  
        Response.ContentType = "text/xml"  
        Response.Write("<CiscoIPPhoneText>" + Environment.NewLine())  
        Response.Write("<Title>Login Help</Title>" + Environment.NewLine())
```

```

    'Response.Write("<Prompt>Press next to view next help file</Prompt>" +
Environment.NewLine())
    'Response.Write("<Text>")
    'Response.Write("This is the VoIP SARRA Developed" + Environment.NewLine())
    'Response.Write("by Carly Tolson and Steven Nocker." + Environment.NewLine() +
Environment.NewLine())
    'Response.Write("1: Press '1' to login as a Teacher." + Environment.NewLine())
    'Response.Write("2: Press 'help' on any page to view the help file for the current page." +
Environment.NewLine())
    'Response.Write("</Text>" + Environment.NewLine())
    'Response.Write("<SoftKeyItem>" + Environment.NewLine())
    'Response.Write("    <Name>Back</Name>" + Environment.NewLine())
    'Response.Write("    <URL>SoftKey:Exit</URL>" + Environment.NewLine())
    'Response.Write("    <Position>1</Position>" + Environment.NewLine())
    'Response.Write("</SoftKeyItem>" + Environment.NewLine())
    'Response.Write("<SoftKeyItem>" + Environment.NewLine())
    'Response.Write("    <Name>Next...</Name>" + Environment.NewLine())
    'Response.Write("    <URL>http://192.168.57.10/HelpLogIn2.aspx</URL>" +
Environment.NewLine())
    'Response.Write("    <Position>2</Position>" + Environment.NewLine())
    'Response.Write("</SoftKeyItem>" + Environment.NewLine())
    'Response.Write("</CiscoIPPhoneText>" + Environment.NewLine())

```

```

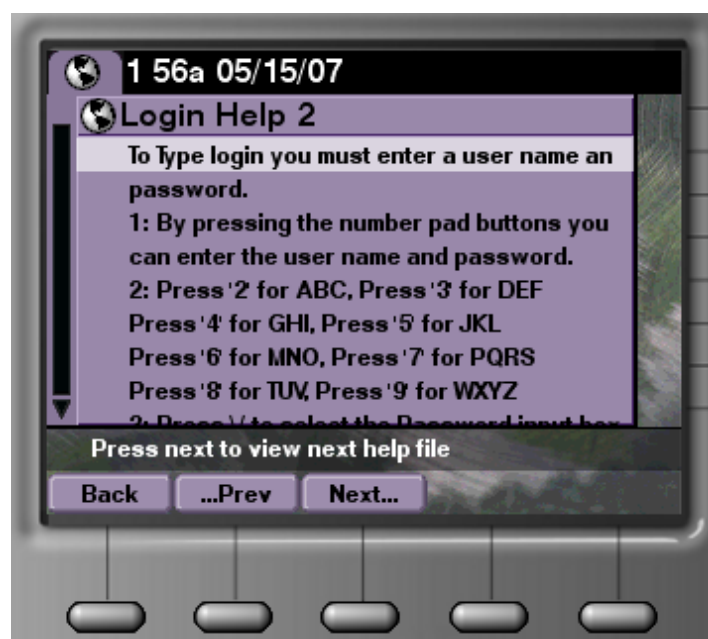
    Response.Write("This is the VoIP SARRA Developed" + Environment.NewLine())
    Response.Write("by Carly Tolson and Steven Nocker." + Environment.NewLine() +
Environment.NewLine())
    Response.Write("1: Press '1' to login as a Teacher." + Environment.NewLine())
    Response.Write("2: Press 'help' on any page to view the help file for the current page." +
Environment.NewLine())

```

End Sub

End Class

10. Login Help 2



HelpLogin2.aspx

```
<%@ Page Language="VB" AutoEventWireup="false" CodeFile="HelpLogin2.aspx.vb"
Inherits="HelpLogin2" %>
```

HelpLogin2.aspx.vb

Partial Class HelpLogin2

Inherits System.Web.UI.Page

Protected Sub Page_Load(ByVal sender As Object, ByVal e As System.EventArgs) Handles Me.Load

' this is for non colour phones

'Response.ContentType = "text/xml"

```
Response.Write("<CiscoIPPhoneText>" + Environment.NewLine())
Response.Write("<Title>Login Help 2</Title>" + Environment.NewLine())
Response.Write("<Prompt>Press next to view next help file</Prompt>" + Environment.NewLine())
Response.Write("<Text>")
Response.Write("To login you must enter a user name an password." + Environment.NewLine())
Response.Write("1: By pressing the number pad buttons you can enter the user name and password."
+ Environment.NewLine())
Response.Write("2: Press '2' for ABC, Press '3' for DEF" + Environment.NewLine())
Response.Write("Press '4' for GHI, Press '5' for JKL" + Environment.NewLine())
Response.Write("Press '6' for MNO, Press '7' for PQRS" + Environment.NewLine())
Response.Write("Press '8' for TUV, Press '9' for WXYZ" + Environment.NewLine())
Response.Write("3: Press \ to select the Password input box" + Environment.NewLine())
Response.Write("4: Enter your Password." + Environment.NewLine())
Response.Write("5: Press Submit." + Environment.NewLine())
Response.Write("</Text>" + Environment.NewLine())
Response.Write("<SoftKeyItem>" + Environment.NewLine())
Response.Write(" <Name>Back</Name>" + Environment.NewLine())
Response.Write(" <URL>SoftKey:Exit</URL>" + Environment.NewLine())
Response.Write(" <Position>1</Position>" + Environment.NewLine())
Response.Write("</SoftKeyItem>" + Environment.NewLine())
Response.Write("<SoftKeyItem>" + Environment.NewLine())
Response.Write(" <Name>...Prev</Name>" + Environment.NewLine())
Response.Write(" <URL>http://192.168.57.10/HelpLogIn.aspx</URL>" +
Environment.NewLine())
Response.Write(" <Position>2</Position>" + Environment.NewLine())
Response.Write("</SoftKeyItem>" + Environment.NewLine())
Response.Write("<SoftKeyItem>" + Environment.NewLine())
Response.Write(" <Name>Next...</Name>" + Environment.NewLine())
Response.Write(" <URL>http://192.168.57.10/HelpLogIn3.aspx</URL>" +
Environment.NewLine())
Response.Write(" <Position>3</Position>" + Environment.NewLine())
Response.Write("</SoftKeyItem>" + Environment.NewLine())
Response.Write("</CiscoIPPhoneText>" + Environment.NewLine())
'This is for 7970
Response.Write("To login you must enter a user name an password." + Environment.NewLine())
Response.Write("1: By pressing the number pad buttons you can enter the user name and password."
+ Environment.NewLine())
Response.Write("2: Press '2' for ABC, Press '3' for DEF" + Environment.NewLine())
Response.Write("Press '4' for GHI, Press '5' for JKL" + Environment.NewLine())
Response.Write("Press '6' for MNO, Press '7' for PQRS" + Environment.NewLine())
Response.Write("Press '8' for TUV, Press '9' for WXYZ" + Environment.NewLine())
Response.Write("3: Press \ to select the Password input box" + Environment.NewLine())
Response.Write("4: Enter your Password." + Environment.NewLine())
Response.Write("5: Press Submit." + Environment.NewLine())
```

End Sub

End Class

11. Instert DB (Non-Interface)

InstertDB.aspx

```
<% @ Page Language="VB" AutoEventWireup="false" CodeFile="InstertDB.aspx.vb" Inherits="Default2"
Debug="true" aspcompat="true" %>
```

```
<%
```

```
' GET THE ATTENDENCE TYPES FOR 5 STUDENTS ON THE PREVIOUS SCREEN
```

```
Dim atnd1, atnd2, atnd3, atnd4, atnd5 As String
```

```
Try
```

```
atnd1 = Request.QueryString(0)
```

```
atnd1 = atnd1.Replace(", ", "")
```

```
atnd1 = Trim(atnd1)
```

```
Catch ex As Exception
```

```
atnd1 = ""
```

```
End Try
```

```
Try
```

```
atnd2 = Request.QueryString(1)
```

```
atnd2 = atnd2.Replace(", ", "")
```

```
atnd2 = Trim(atnd2)
```

```
Catch ex As Exception
```

```
atnd2 = ""
```

```
End Try
```

```
Try
```

```
atnd3 = Request.QueryString(2)
```

```
atnd3 = atnd3.Replace(", ", "")
```

```
atnd3 = Trim(atnd3)
```

```
Catch ex As Exception
```

```
atnd3 = ""
```

```
End Try
```

```
Try
```

```
atnd4 = Request.QueryString(3)
```

```
atnd4 = atnd4.Replace(", ", "")
```

```
atnd4 = Trim(atnd4)
```

```
Catch ex As Exception
```

```
atnd4 = ""
```

```
End Try
```

```
Try
```

```
atnd5 = Request.QueryString(4)
```

```
atnd5 = atnd5.Replace(", ", "")
```

```
atnd5 = Trim(atnd5)
```

```
Catch ex As Exception
```

```
atnd5 = ""
```

```
End Try
```

```
' STRAT THE FUNCTION FOR INSERTING THE 5 RECORDS INTO THE DB
```

```
SaveClass(atnd1, atnd2, atnd3, atnd4, atnd5)
```

```
' GO TO THE NEXT SCREEN AND THE SQL SATEMENT AUTOMATICLY GETS THE
UPDATED INFORATION WHEN IT IS RE-RUN
```

```
Response.Redirect("http://192.168.57.10/ClassTimesInsert.aspx")
```

```
%>
```


InsterDB.aspx.vb

Imports System.Data

Imports System.Data.OracleClient

Partial Class Default2 : Inherits Class1

Public dbOrds As New OracleConnection

Public Sub Open_Connection()

Dim ConStr As String

' ORACLE CONECTION STRING ALLOWING THE USER ACCESS TO THE
DATABASE

' PROVIDING THE USERNAME AND PASSWORD ARE CORRECT

ConStr = "data source=U01;User ID=" & getUser() & ";Password=" & getPass() & ";"

dbOrds = New OracleConnection(ConStr)

dbOrds.Open()

End Sub

Public Sub Close_Connection()

dbOrds.Close()

End Sub

Function SaveClass(ByVal atnd1, ByVal atnd2, ByVal atnd3, ByVal atnd4, ByVal atnd5)

Dim SQLStmt As String

Dim cmd As New OracleCommand

Dim dReader As OracleDataReader

' OPEN THE DB

Open_Connection()

' SQL STATEMENT SELECTS ALL THE DATA NEEDED TO DISPLAY STUDENT
DETAILS FOR A PARTICLUAR UNIT AND TIME AND MAKING

' SURE THE DATA FOR THIS STUDENT HASN'T ALREADY BEEN ENTERED INTO
THE DATABASE FOR THIS UNIT AND TIME.

SQLStmt = "SELECT student.SFIRST_NAME, student.SLAST_NAME,
student.STUDENTID, timetable.TIMETABLEID, sysdate, " _
& "(select registerno " _
& "from snocker.UNIT_REG " _
& "where upper(unitcode) = upper('" & getUnit() & "')) AS registerno " _
& "FROM snocker.student, snocker.timetable, snocker.student_unit " _
& "WHERE student.STUDENTID = student_unit.STUDENTID " _
& "AND student_unit.unitcode = timetable.unitcode " _
& "AND upper(student_unit.unitcode) = upper('" & getUnit() & " " _
& "AND to_date(timetable.sched_date_time,'DD-MON-YY') = to_date(SYSDATE,'DD-
MON-YY') " _
& "AND student.STUDENTID NOT IN (select studentid " _
& "from(snocker.STUDENT_REGISTER) " _
& "where TIMETABLEID in (select TIMETABLEID " _
& "from snocker.timetable " _
& "where upper(unitcode) = upper('" & getUnit() & " " _
& "and to_CHAR(ATTEND_DATE,'DD-MON-YY') = to_CHAR(SYSDATE,'DD-
MON-YY') " _
& "and REGISTERNO = (select registerno " _
& "from snocker.UNIT_REG " _
& "where upper(unitcode) = upper('" & getUnit() & "))) " _

```

        & "AND student.STUDENTID NOT IN (select studentid " _
    & "from(snocker.TEMP_REG) " _
    & "where TIMETABLEID in (select TIMETABLEID " _
    & "from snocker.timetable " _
    & "where upper(unitcode) = upper("'" & getUnit() & "')) " _
    & "and to_CHAR(ATTEND_DATE,'DD-MON-YY') = to_CHAR(SYSDATE,'DD-
MON-YY') " _
    & "and REGISTERNO = (select registerno " _
    & "from snocker.UNIT_REG " _
    & "where upper(unitcode) = upper("'" & getUnit() & "')) " _
    & "order by SLAST_NAME"

```

```
cmd = New OracleCommand(SQLStmt, dbOrds)
```

```
' CREATE A RECORD SET OF THE INFORMATION IN THE SQL STATEMENT
dReader = cmd.ExecuteReader()
```

```
' CALL A FUNCTION TO INSERT THE DATA ENTERED ON THE PREVIOUS PAGE
INTO THE DB
```

```
InsertDB(dReader, atnd1, atnd2, atnd3, atnd4, atnd5)
```

```
cmd = Nothing
Close_Connection()
```

End Function

```
Function InsertDB(ByVal dReader, ByVal atnd1, ByVal atnd2, ByVal atnd3, ByVal atnd4,
ByVal atnd5)
```

```
Dim SQLStmt2 As String
Dim cmd2 As New OracleCommand
Dim x As Integer
x = 1
```

```
' THERE ARE ONLY 5 UPDATES AT A TIME BECAUSE THERE WERE
LIMITATION ON THE INPUT SCREEN
```

```
While dReader.Read
```

```
    If x >= 6 Then
        Exit While
```

```
    End If
```

```
    If x = 1 Then
```

```
        If atnd1 <> "" Then
```

```
            ' INSERT THE FIRST SET OF VALUES INTO THE TEMP TABLE
```

```
            SQLStmt2 = "INSERT into snocker.TEMP_REG values ('" & dReader("Studentid")
& "','" & dReader("registerno") & "','" & atnd1 & "','" & dReader("TIMETABLEID") &
"',default)"
```

```
            End If
```

```
        End If
```

```
        If x = 2 Then
```

```
            If atnd2 <> "" Then
```

```
                ' INSERT THE SECOND SET OF VALUES INTO THE TEMP TABLE
```

```
                SQLStmt2 = "INSERT into snocker.TEMP_REG values ('" & dReader("Studentid")
& "','" & dReader("registerno") & "','" & atnd2 & "','" & dReader("TIMETABLEID") &
"',default)"
```

```
                End If
```

```
            End If
```

```
        If x = 3 Then
```

```
            If atnd3 <> "" Then
```

```
                ' INSERT THE THIRD SET OF VALUES INTO THE TEMP TABLE
```

```

        SQLStmnt2 = "INSERT into snocker.TEMP_REG values (" & dReader("Studentid")
& "," & dReader("registerno") & "," & atnd3 & "," & dReader("TIMETABLEID") &
",default)"
        End If
    End If
    If x = 4 Then
        If atnd4 <> "" Then
            ' INSERT THE FOURTH SET OF VALUES INTO THE TEMP TABLE
            SQLStmnt2 = "INSERT into snocker.TEMP_REG values (" & dReader("Studentid")
& "," & dReader("registerno") & "," & atnd4 & "," & dReader("TIMETABLEID") &
",default)"
            End If
        End If
        If x = 5 Then
            If atnd5 <> "" Then
                ' INSERT THE FIFTH SET OF VALUES INTO THE TEMP TABLE
                SQLStmnt2 = "INSERT into snocker.TEMP_REG values (" & dReader("Studentid")
& "," & dReader("registerno") & "," & atnd5 & "," & dReader("TIMETABLEID") &
",default)"
                End If
            End If
            cmd2 = New OracleCommand(SQLStmnt2, dbOrds)
            cmd2.ExecuteNonQuery()

            ' INCRIMENT THE VALUE OF X AS OUR CHECK IF THE RECORDS ARE = TO 5
YET
            x = x + 1
        End While

        cmd2 = Nothing

    End Function

End Class

```

12. Update DB (Non-Interface)

UpdateDB.aspx

```
<%@ Page Language="VB" AutoEventWireup="false" CodeFile="UpdateDB.aspx.vb"
Inherits="UpdateDB" aspcompat="true" Debug="true"%>
<%
' GET THE ATTENDENCE TYPES FOR 5 STUDENTS ON THE PREVIOUS SCREEN
Dim atnd1, atnd2, atnd3, atnd4, atnd5 As String

Try
    atnd1 = Request.QueryString(0)
    atnd1 = atnd1.Replace(", ", "")
    atnd1 = Trim(atnd1)
Catch ex As Exception
    atnd1 = ""
End Try

Try
    atnd2 = Request.QueryString(1)
    atnd2 = atnd2.Replace(", ", "")
    atnd2 = Trim(atnd2)
Catch ex As Exception
    atnd2 = ""
End Try

Try
    atnd3 = Request.QueryString(2)
    atnd3 = atnd3.Replace(", ", "")
    atnd3 = Trim(atnd3)
Catch ex As Exception
    atnd3 = ""
End Try

Try
    atnd4 = Request.QueryString(3)
    atnd4 = atnd4.Replace(", ", "")
    atnd4 = Trim(atnd4)
Catch ex As Exception
    atnd4 = ""
End Try

Try
    atnd5 = Request.QueryString(4)
    atnd5 = atnd5.Replace(", ", "")
    atnd5 = Trim(atnd5)
Catch ex As Exception
    atnd5 = ""
End Try

' STRAT THE FUNCTION FOR INSERTING THE 5 RECORDS INTO THE DB
Update(atnd1, atnd2, atnd3, atnd4, atnd5)

' GO TO THE NEXT SCREEN AND THE SQL SATEMENT AUTOMATICLY GETS THE
UPDATED INFORATION WHEN IT IS RE-RUN
Response.Redirect("http://192.168.57.10/ClassTimesUpdate.aspx")
%>
```

UpdateDB.aspx.vb

Imports System.Data

Imports System.Data.OracleClient

Partial Class UpdateDB : Inherits Class1

Public dbOrds As New OracleConnection

Public Sub Open_Connection()

Dim ConStr As String

' ORACLE CONECTION STRING ALLOWING THE USER ACCESS TO THE
DATABASE

' PROVIDING THE USERNAME AND PASSWORD ARE CORRECT

ConStr = "data source=U01;User ID=" & getUser() & ";Password=" & getPass() & ";"

dbOrds = New OracleConnection(ConStr)

dbOrds.Open()

End Sub

Public Sub Close_Connection()

dbOrds.Close()

End Sub

Function Update(ByVal atnd1, ByVal atnd2, ByVal atnd3, ByVal atnd4, ByVal atnd5)

Dim SQLStmt As String

Dim cmd As New OracleCommand

Dim dReader As OracleDataReader

' OPEN THE DB

Open_Connection()

' GET THE DATA THAT HAS ALREADY BEEN ENTERED INTO THE TEMP TABLE
THAT RELATES TO THE CURRENT USER AND THE CURRENT UNIT SELECTED

SQLStmt = "SELECT Student.SLAST_NAME, Student.SFIRST_NAME,
TEMP_REG.STUDENTID, TEMP_REG.REGISTERNO, TEMP_REG.ATTENDENCEID,
TEMP_REG.TIMETABLEID, TEMP_REG.ATTEND_DATE " _
& "FROM snocker.TEMP_REG, snocker.Student " _
& "Where TEMP_REG.STUDENTID = Student.STUDENTID " _
& "And TIMETABLEID IN (SELECT TIMETABLEID from snocker.TIMETABLE
where Upper(TEACHERID) in (Upper("" & getUser() & "")) " _
& "and Upper(UNITCODE) in (Upper("" & getUnit() & ""))" _
& "AND TEMP_REG.STUDENTID NOT IN (SELECT STUDENTID FROM
snocker.DUMMY_REG " _
& "Where TIMETABLEID IN (SELECT TIMETABLEID from
snocker.TIMETABLE where Upper(TEACHERID) in (Upper("" & getUser() & "")) " _
& "and Upper(UNITCODE) in (Upper("" & getUnit() & ""))" _
& "ORDER BY Student.SLAST_NAME"

cmd = New OracleCommand(SQLStmt, dbOrds)

' CREATE A RECORD SET OF THE INFORMATION IN THE SQL STATEMENT

dReader = cmd.ExecuteReader()

' CALL A FUNCTION TO INSERT THE DATA FROM THE TEMP TABLE INTO THE
DUMMY TABLE WITH THE UPDATED ATTENDENCE TYPES

SubmitDB(dReader, atnd1, atnd2, atnd3, atnd4, atnd5)

cmd = Nothing

```

    Close_Connection()
End Function

Function SubmitDB(ByVal dReader, ByVal atnd1, ByVal atnd2, ByVal atnd3, ByVal atnd4,
ByVal atnd5)
    Dim SQLStmt2 As String
    Dim cmd2 As New OracleCommand
    Dim x As Integer = 1

    If dReader.FieldCount = 0 Then
        Exit Function
    End If

    ' THERE ARE ONLY 5 UPDATES AT A TIME BECAUSE THERE WERE
    LIMITATION ON THE INPUT SCREEN
    While dReader.Read
        If x >= 6 Then
            Exit While
        End If
        If x = 1 Then
            If atnd1 <> "" Then
                'INSERT THE FIRST RECORD
                SQLStmt2 = "INSERT into snocker.dummy_reg values (" &
dReader("STUDENTID") & "," & dReader("REGISTERNO") & "," & atnd1 & "," &
dReader("TIMETABLEID") & ",default)"
                End If
            End If
            If x = 2 Then
                If atnd2 <> "" Then
                    'INSERT THE SECOND RECORD
                    SQLStmt2 = "INSERT into snocker.dummy_reg values (" &
dReader("STUDENTID") & "," & dReader("REGISTERNO") & "," & atnd2 & "," &
dReader("TIMETABLEID") & ",default)"
                    End If
                End If
                If x = 3 Then
                    If atnd3 <> "" Then
                        'INSERT THE THIRD RECORD
                        SQLStmt2 = "INSERT into snocker.dummy_reg values (" &
dReader("STUDENTID") & "," & dReader("REGISTERNO") & "," & atnd3 & "," &
dReader("TIMETABLEID") & ",default)"
                        End If
                    End If
                    If x = 4 Then
                        If atnd4 <> "" Then
                            'INSERT THE FORTH RECORD
                            SQLStmt2 = "INSERT into snocker.dummy_reg values (" &
dReader("STUDENTID") & "," & dReader("REGISTERNO") & "," & atnd4 & "," &
dReader("TIMETABLEID") & ",default)"
                            End If
                        End If
                        If x = 5 Then
                            If atnd5 <> "" Then
                                'INSERT THE FIFTH RECORD
                                SQLStmt2 = "INSERT into snocker.dummy_reg values (" &
dReader("STUDENTID") & "," & dReader("REGISTERNO") & "," & atnd5 & "," &
dReader("TIMETABLEID") & ",default)"
                                End If
                            End If
                        End If
                    End If
                End If
            End If
        End If
    End While
End Function

```

```
cmd2 = New OracleCommand(SQLStmnt2, dbOrds)
cmd2.ExecuteNonQuery()

' INCRIMENT THE VALUE OF X AS OUR CHECK IF THE RECORDS ARE = TO 5
YET
  x = x + 1

End While

cmd2 = Nothing
End Function

End Class
```

13. Replica Database Configuration

Deletion of Existing Tables (for privacy reasons)

```
drop table STUDENT_REGISTER;
drop table DUMMY_REG;
drop table TEMP_REG;
drop table TIMETABLE;
drop table UNIT_START;
drop table STUDENT_UNIT;
drop table STUDENT_COURSE;
drop table STUDENT;
drop table ATTEND_TYPE;
drop table COURSE;
drop table UNIT_REG;
drop table UGROUP;
drop table UNIT;
drop table TEACHER;
drop table ROOM;
drop table CENTRE;
```

Creation of New Dummy Tables

```
create table CENTRE
(CENTREID varchar2(3) constraint CENTRE_CENID_pk primary key,
CENTRE_NAME varchar2(30) not null);

create table ROOM
(ROOMID varchar2(7) constraint ROOM_ROOMID_pk primary key,
DESCRIPTION varchar2(30) not null);

create table TEACHER
(TEACHERID varchar2(10) constraint TEACHER_TEACHID_pk primary key,
TFIRST_NAME varchar2(30) not null,
TLAST_NAME varchar2(30) not null);

create table UNIT
(UNITCODE varchar2(6) constraint UNIT_UNITCODE_pk primary key,
UNIT_NAME varchar2(60) not null);

create table UGROUP
(GROUPCODE varchar2(8) constraint UGROUP_GROUPCODE_pk primary key,
DESCRIPTION varchar2(60) not null);

create table UNIT_REG
(UNITCODE varchar2(6) constraint UNIT_UNITCODE_fk references UNIT(UNITCODE),
REGISTERNO varchar2(10) constraint UNIT_REGISTERNO_uk UNIQUE not null,
CONSTRAINT UNITREG_PK PRIMARY KEY (UNITCODE,REGISTERNO));

create table COURSE
(COURSECODE varchar2(6) constraint COURSE_COURSECODE_pk primary key,
COURSE_NAME varchar2(30) not null);

create table ATTEND_TYPE
(ATTENDENCEID varchar2(1) DEFAULT 'A' constraint ATTENDTYPE_ATTENDID_pk primary
key constraint ATTENDTYPE_ck1 check (ATTENDENCEID = 'P' or ATTENDENCEID = 'L' OR
ATTENDENCEID = 'E' OR ATTENDENCEID = 'A' OR ATTENDENCEID = 'R'),
DESCRIPTION varchar2(30) not null);

create table STUDENT
(STUDENTID varchar2(7) constraint STUDENT_STUDID_pk primary key,
```

```

SFIRST_NAME varchar2(30) not null,
SLAST_NAME  varchar2(30) not null,
SHOMEPTH   varchar2(10) not null,
SMOBILEPH  varchar2(10),
SWORKPH    varchar2(10),
SSTREET    varchar2(30) not null,
SSUBURB    varchar2(30) not null,
SSTATE     varchar2(3) constraint STUDENT_ck1 check (SSTATE = 'VIC' or SSTATE =
'NSW' OR SSTATE = 'QLD' OR SSTATE = 'SA' OR SSTATE = 'WA' OR SSTATE = 'NT' OR SSTATE
= 'ACT') not null,
SPOSTCODE  varchar2(6) not null);

```

```

create table STUDENT_COURSE
(STUDENTID  varchar2(7) constraint STUDENTCOURSE_STUDENTID_fk references
STUDENT(STUDENTID),
COURSECODE varchar2(6) constraint STUDENT_COURSECODE_fk references
COURSE(COURSECODE) not null,
CONSTRAINT STUDENTCOURSE_PK PRIMARY KEY (STUDENTID,COURSECODE));

```

```

create table STUDENT_UNIT
(STUDENTID  varchar2(7) constraint STUDENTUNIT_STUDENTID_fk references
STUDENT(STUDENTID),
UNITCODE   varchar2(6) constraint STUDENTUNIT_UNITCODE_fk references UNIT(UNITCODE)
not null,
GROUPCODE  varchar2(8) constraint STUDENTUNIT_GROUPCODE_fk references
UGROUP(GROUPCODE) not null,
CONSTRAINT STUDENTUNIT_PK PRIMARY KEY (STUDENTID,UNITCODE,GROUPCODE));

```

```

create table UNIT_START
(UNITCODE   varchar2(6) constraint UNITSTART_UNITCODE_fk references UNIT(UNITCODE) not
null,
START_DATE  Date NOT NULL,
HOURS       NUMBER(3) not null,
CONSTRAINT UNITSTART_PK PRIMARY KEY (UNITCODE,START_DATE));

```

```

create table TIMETABLE
(TIMETABLEID varchar2(10)CONSTRAINT TIMETABLE_PK PRIMARY KEY,
UNITCODE     varchar2(6) constraint TIMETABLE_UNITCODE_fk references UNIT(UNITCODE)
not null,
TEACHERID   varchar2(10) constraint TIMETABLE_TEACHERID_fk references
TEACHER(TEACHERID) not null,
ROOMID      varchar2(7) constraint TIMETABLE_ROOMID_fk references
ROOM(ROOMID) not null,
CENTREID    varchar2(3) constraint TIMETABLE_CENTREID_fk references CENTRE(CENTREID)
not null,
SCHED_DATE_TIME DATE NOT NULL,
HOURS       NUMBER(2) constraint TIMETABLE_ck1 check (HOURS > 0) NOT NULL,
MINUTES     NUMBER(3) DEFAULT 0 not null,
GROUPCODE   varchar2(8) constraint TIMETABLE_GROUPCODE_fk references
UGROUP(GROUPCODE) not null);

```

```

create table STUDENT_REGISTER
(STUDENTID  varchar2(7) constraint STUDENTREG_STUDENTID_fk references
STUDENT(STUDENTID),
REGISTERNO  varchar2(10)constraint STUDENTREG_REGISTERNO_fk references
UNIT_REG(REGISTERNO),
ATTENDENCEID varchar2(1) constraint STUDENTREG_ATTENDENCEID_fk references
ATTEND_TYPE(ATTENDENCEID) not null,
TIMETABLEID varchar2(10) constraint STUDENTREG_TIMETABLEID_fk references
TIMETABLE(TIMETABLEID),

```

```
ATTEND_DATE DATE default sysdate,
CONSTRAINT STUDENTREG_PK PRIMARY KEY
(STUDENTID,REGISTERNO,TIMETABLEID,ATTEND_DATE));
```

```
create table TEMP_REG
(STUDENTID varchar2(7) constraint TEMP_STUDENTID_fk references STUDENT(STUDENTID),
REGISTERNO varchar2(10)constraint TEMP_REGISTERNO_fk references
UNIT_REG(REGISTERNO),
ATTENDENCEID varchar2(1) constraint TEMP_ATTENDENCEID_fk references
ATTEND_TYPE(ATTENDENCEID) not null,
TIMETABLEID varchar2(10) constraint TEMP_TIMETABLEID_fk references
TIMETABLE(TIMETABLEID),
ATTEND_DATE DATE default sysdate,
CONSTRAINT TEMP_PK PRIMARY KEY
(STUDENTID,REGISTERNO,TIMETABLEID,ATTEND_DATE));
```

```
create table DUMMY_REG
(STUDENTID varchar2(7) constraint DUMMY_STUDENTID_fk references
STUDENT(STUDENTID),
REGISTERNO varchar2(10)constraint DUMMY_REGISTERNO_fk references
UNIT_REG(REGISTERNO),
ATTENDENCEID varchar2(1) constraint DUMMY_ATTENDENCEID_fk references
ATTEND_TYPE(ATTENDENCEID) not null,
TIMETABLEID varchar2(10) constraint DUMMY_TIMETABLEID_fk references
TIMETABLE(TIMETABLEID),
ATTEND_DATE DATE default sysdate,
CONSTRAINT DUMMY_PK PRIMARY KEY
(STUDENTID,REGISTERNO,TIMETABLEID,ATTEND_DATE));
```

Insert Initial Dummy Data

```
insert into CENTRE values ('NEL','NELSON');
insert into CENTRE values ('ELG','ELGAR');
insert into CENTRE values ('WHT','WHITE HORSE');
COMMIT;
```

```
insert into ROOM values ('N1.G82','IGLOO');
insert into ROOM values ('N1.158','CISCO DEGREE ROOM');
insert into ROOM values ('N1.154','CISCO');
insert into ROOM values ('N1.G22','GP/COMPUTER');
insert into ROOM values ('N1.160','CCT SHORT COURSE');
insert into ROOM values ('N1.140','GP/Copmuter');
insert into ROOM values ('N1.143','WORKSHOP');
insert into ROOM values ('N1.155','CISCO');
insert into ROOM values ('N1.142','GP/Copmuter');
COMMIT;
```

```
insert into TEACHER values ('SBUTTON','STEVEN', 'BUTTON');
insert into TEACHER values ('FMENTIPLAY','FRANK', 'MENTIPLAY');
insert into TEACHER values ('SMITRA','SYDIPTO', 'MITRA');
insert into TEACHER values ('SBESFORD','STEVEN', 'BESFORD');
insert into TEACHER values ('KMCKENZIE','KEVIN', 'MCKENZIE');
insert into TEACHER values ('UPATEL','UMESH', 'PATEL');
insert into TEACHER values ('RSALOMON','RICHARD', 'SALOMON');
insert into TEACHER values ('KPATEL','KEYUR', 'PATEL');
insert into TEACHER values ('NFINCH','NICK', 'FINCH');
insert into TEACHER values ('IALLSOP','IAN', 'ALLSOP');
insert into TEACHER values ('JWAITE','JOSHUA', 'WAITE');
```

COMMIT;

```
insert into UNIT values ('ICT111','ANALOGUE AND DIGITAL FUNDAMENTALS');
insert into UNIT values ('ICT112','NETWORKING AND ROUTING BASICS');
insert into UNIT values ('ICT113','COMPUTER SYSTEMS HARDWARE AND SOFTWARE');
insert into UNIT values ('ICT114','MATHEMATICS FOR COMPUTING');
insert into UNIT values ('ICT122','SWITCHING PRINCIPLES AND WAN TECHNOLOGIES');
insert into UNIT values ('ICT124','INTERNET TECHNOLOGIES');
insert into UNIT values ('ICT212','ADVANCED ROUTING');
insert into UNIT values ('ICT213','MULTI-USER OPERATING SYSTEMS ADMINISTRATION');
insert into UNIT values ('ICT214','OBJECT ORIENTATED DESIGN AND PROGRAMMING');
insert into UNIT values ('ICT215','BUISNESS MANAGEMENT');
insert into UNIT values ('ICT220','BUISNESS DATA COMMUNICATION');
insert into UNIT values ('ICT222','REMOTE ACCESS');
insert into UNIT values ('ICT225','STRATEGIC PROJECT MANAGEMENT');
insert into UNIT values ('ICT312','CCNP3 - MULTILAYER SWITCHING');
insert into UNIT values ('ICT315','ENTREPRENEURSHIP AND INOVATION');
insert into UNIT values ('ICT321','EMERGING TECHNOLOGIES');
insert into UNIT values ('ICT316','COMPUTER SYSTEMS PROJECT A');
insert into UNIT values ('ICT322','NETWORK TROUBLESHOOTING');
insert into UNIT values ('ICT325','COMPUTER SYSTEMS INNOVATION PROJECT');
insert into UNIT values ('ICT326','COMPUTER SYSTEMS PROJECT B');
COMMIT;
```

```
insert into UGROUP values ('1BD - CT','BACHELOR DEGREE YEAR 1 DAY');
insert into UGROUP values ('2BD - CT','BACHELOR DEGREE YEAR 2 DAY');
insert into UGROUP values ('3BD - CT','BACHELOR DEGREE YEAR 3 DAY');
insert into UGROUP values ('1BE - CT','BACHELOR DEGREE YEAR 1 EVENING');
insert into UGROUP values ('2BE - CT','BACHELOR DEGREE YEAR 2 EVENING');
insert into UGROUP values ('3BE - CT','BACHELOR DEGREE YEAR 3 EVENING');
COMMIT;
```

```
insert into UNIT_REG values ('ICT113','1000001');
insert into UNIT_REG values ('ICT111','1000002');
insert into UNIT_REG values ('ICT212','1000003');
insert into UNIT_REG values ('ICT122','1000004');
insert into UNIT_REG values ('ICT312','1000005');
insert into UNIT_REG values ('ICT225','1000006');
insert into UNIT_REG values ('ICT124','1000007');
insert into UNIT_REG values ('ICT114','1000008');
insert into UNIT_REG values ('ICT112','1000009');
insert into UNIT_REG values ('ICT214','1000010');
insert into UNIT_REG values ('ICT325','1000011');
insert into UNIT_REG values ('ICT213','1000012');
insert into UNIT_REG values ('ICT322','1000013');
insert into UNIT_REG values ('ICT215','1000014');
insert into UNIT_REG values ('ICT222','1000015');
insert into UNIT_REG values ('ICT315','1000016');
insert into UNIT_REG values ('ICT220','1000017');
insert into UNIT_REG values ('ICT321','1000018');
insert into UNIT_REG values ('ICT316','1000019');
insert into UNIT_REG values ('ICT326','1000020');
COMMIT;
```

```
insert into COURSE values ('SB1','SOFTWARE BACHELOR DEGREE');
insert into COURSE values ('NB1','NETWORK BACHELOR DEGREE');
COMMIT;
```

```
insert into ATTEND_TYPE values ('P','PRESENT');
insert into ATTEND_TYPE values ('L','LATE');
```

```
insert into ATTEND_TYPE values ('E','EXCUSED LATENESS');
insert into ATTEND_TYPE values ('A','ABSENT');
insert into ATTEND_TYPE values ('R','REPORT TO EMPLOYER');
COMMIT;
```

```
insert into STUDENT values ('0650242','STEVEN','NOCKER','0394312588','0403722092',NULL,'23
LAUREL HILL DRIVE','ELTHAM','VIC','3095');
insert into STUDENT values ('1237890','JOE','BLOGS','0398765432',NULL,NULL,'123 DUMMY
ST','ELTHAMFAR FAR AWAY','NSW','1234');
insert into STUDENT values ('1267891','STEVEN','SMYTH','0612345678',NULL,NULL,'654 DUNNO
DRVIE','RINGWOOD','VIC','3030');
insert into STUDENT values ('1456746','PHILIP','BLACK','7984561230',NULL,NULL,'1 SMART
CLOSE','TEMPLESTOE','VIC','3121');
insert into STUDENT values ('1111111','RONNIE','ADILI','6124457654',NULL,NULL,'3543 QUEEN
AVENUE','MINNEAPOLIS','VIC','9899');
insert into STUDENT values ('2222222','PETER','HELTZER','3057534533',NULL,NULL,'11234
VESTAL DRIVE','CORAL SPRINGS','VIC','2283');
insert into STUDENT values ('3333333','CHRISTOPHER','GIBSON','3052354563',NULL,NULL,'9807
S.W. 152 STREET','MIAMI','VIC','2332');
insert into STUDENT values ('4444444','KIMBERLY','ZIMMERMAN','7132253434',NULL,NULL,'7500
RENO ROAD','HOUSTON','VIC','0965');
insert into STUDENT values ('5555555','ROBERT','RAMSAY','2122239889',NULL,NULL,'22 WEST 5
AVENUE','NEW YORK','VIC','3300');
insert into STUDENT values ('6666666','STEVEN','FRAZIER','4109958755',NULL,NULL,'5660 N.W.
145 TERRACE','BALTIMORE','VIC','5532');
insert into STUDENT values ('7777777','NICKOLAS','KORBA','4156640900',NULL,NULL,'85
BAYSHORE DRIVE','SAN FRANCISCO','VIC','5533');
insert into STUDENT values ('8888888','KIMBERLY','WEISSMAN','9043888605',NULL,NULL,'8344
N.W. 74 STREET','GAINESVILLE','VIC','3443');
insert into STUDENT values ('9999999','CHRISTA','PARULIS','4108776565',NULL,NULL,'222
ROBERTS TERRACE','BALTIMORE','VIC','0877');
insert into STUDENT values ('1010101','JARED','BERLIN','8032237868',NULL,NULL,'900 MAIN
HIGHWAY','CHARLESTON','VIC','0560');
insert into STUDENT values ('1212121','OSCAR','CAMEJO','7164333321',NULL,NULL,'900
MAHONEY DRIVE','BUFFALO','VIC','0954');
insert into STUDENT values ('1313131','WENDY','SOLOMON','3056664532',NULL,NULL,'426
SAVONA AVENUE','CORAL GABLES','VIC','9066');
insert into STUDENT values ('1414141','ANA','WATSON','3055612334',NULL,NULL,'1234
DELAWARE AVENUE','FT. LAUDERDALE','VIC','5678');
insert into STUDENT values ('1515151','EILEEN','FAULKNER','3054898876',NULL,NULL,'8122 N.W.
76 STREET','FT. LAUDERDALE','VIC','5540');
insert into STUDENT values ('1616161','ANA','WATSON','3055957877',NULL,NULL,'4004 S. RIVER
ROAD','MIAMI','VIC','4556');
insert into STUDENT values ('1717171','FRANCES','ORTIZ','3035753211',NULL,NULL,'3456
ROBERTSON AVENUE','DENVER','VIC','7786');
insert into STUDENT values ('1818181','BRADLEY','COE','4152356543',NULL,NULL,'8976 S.W. 75
STREET','SAN FRANCISCO','VIC','0002');
insert into STUDENT values ('1919191','KEVIN','DIGIACOMO','3055317652',NULL,NULL,'234 RIVO
ALTO','MIAMI BEACH','VIC','4432');
insert into STUDENT values ('2020202','ERICA','SLATER','3125456978',NULL,NULL,'278 WEST 77
TERRACE','CHICAGO','VIC','4565');
insert into STUDENT values ('2121212','CEDRIC','JOSEPH','4046678955',NULL,NULL,'544 BEST
STREET','ATLANTA','VIC','4442');
insert into STUDENT values ('2323232','RYAN','CORNELL','4047554490',NULL,NULL,'7177 HALL
AVENUE','ATLANTA','VIC','5543');
insert into STUDENT values ('2424242','LORI','PRICE','3109612323',NULL,NULL,'8765 JACKSON
MANOR','SANTA ROSA','VIC','8876');
insert into STUDENT values ('2525252','MICHELLE','ZACCO','6178843434',NULL,NULL,'456 RYDER
ROAD','BOSTON','VIC','1992');
```

```
insert into STUDENT values ('2626262','CARLOS','HUERTA','2123445654',NULL,NULL,'8900 W.
JAMAICA AVENUE','NEW YORK','VIC','0020');
COMMIT;
```

```
insert into STUDENT_COURSE values ('0650242','NB1');
insert into STUDENT_COURSE values ('1237890','NB1');
insert into STUDENT_COURSE values ('1267891','NB1');
insert into STUDENT_COURSE values ('1456746','NB1');
insert into STUDENT_COURSE values ('1111111','NB1');
insert into STUDENT_COURSE values ('2222222','NB1');
insert into STUDENT_COURSE values ('3333333','NB1');
insert into STUDENT_COURSE values ('4444444','NB1');
insert into STUDENT_COURSE values ('5555555','NB1');
insert into STUDENT_COURSE values ('6666666','NB1');
insert into STUDENT_COURSE values ('7777777','NB1');
insert into STUDENT_COURSE values ('8888888','NB1');
insert into STUDENT_COURSE values ('9999999','NB1');
insert into STUDENT_COURSE values ('1010101','NB1');
insert into STUDENT_COURSE values ('1212121','NB1');
insert into STUDENT_COURSE values ('1313131','NB1');
insert into STUDENT_COURSE values ('1414141','NB1');
insert into STUDENT_COURSE values ('1515151','NB1');
insert into STUDENT_COURSE values ('1616161','NB1');
insert into STUDENT_COURSE values ('1717171','NB1');
insert into STUDENT_COURSE values ('1818181','NB1');
insert into STUDENT_COURSE values ('1919191','NB1');
insert into STUDENT_COURSE values ('2020202','NB1');
insert into STUDENT_COURSE values ('2121212','NB1');
insert into STUDENT_COURSE values ('2323232','NB1');
insert into STUDENT_COURSE values ('2424242','NB1');
insert into STUDENT_COURSE values ('2525252','NB1');
insert into STUDENT_COURSE values ('2626262','NB1');
COMMIT;
```

```
insert into STUDENT_UNIT values ('0650242','ICT113','1BD - CT');
insert into STUDENT_UNIT values ('0650242','ICT111','1BD - CT');
insert into STUDENT_UNIT values ('0650242','ICT212','1BD - CT');
insert into STUDENT_UNIT values ('1237890','ICT113','1BD - CT');
insert into STUDENT_UNIT values ('1237890','ICT111','1BD - CT');
insert into STUDENT_UNIT values ('1456746','ICT212','1BD - CT');
insert into STUDENT_UNIT values ('1111111','ICT113','1BD - CT');
insert into STUDENT_UNIT values ('2222222','ICT113','1BD - CT');
insert into STUDENT_UNIT values ('3333333','ICT113','1BD - CT');
insert into STUDENT_UNIT values ('4444444','ICT113','1BD - CT');
insert into STUDENT_UNIT values ('5555555','ICT113','1BD - CT');
insert into STUDENT_UNIT values ('6666666','ICT113','1BD - CT');
insert into STUDENT_UNIT values ('7777777','ICT113','1BD - CT');
insert into STUDENT_UNIT values ('8888888','ICT113','1BD - CT');
insert into STUDENT_UNIT values ('9999999','ICT111','1BD - CT');
insert into STUDENT_UNIT values ('1010101','ICT111','1BD - CT');
insert into STUDENT_UNIT values ('1212121','ICT111','1BD - CT');
insert into STUDENT_UNIT values ('1313131','ICT111','1BD - CT');
insert into STUDENT_UNIT values ('1414141','ICT111','1BD - CT');
insert into STUDENT_UNIT values ('1515151','ICT111','1BD - CT');
insert into STUDENT_UNIT values ('1616161','ICT111','1BD - CT');
insert into STUDENT_UNIT values ('1717171','ICT111','1BD - CT');
insert into STUDENT_UNIT values ('1818181','ICT111','1BD - CT');
insert into STUDENT_UNIT values ('1919191','ICT111','1BD - CT');
insert into STUDENT_UNIT values ('2020202','ICT212','1BD - CT');
insert into STUDENT_UNIT values ('2121212','ICT212','1BD - CT');
```



```

insert into STUDENT_UNIT values ('4444444','ICT321','1BD - CT');
insert into STUDENT_UNIT values ('5555555','ICT321','1BD - CT');
insert into STUDENT_UNIT values ('6666666','ICT220','1BD - CT');
insert into STUDENT_UNIT values ('7777777','ICT220','1BD - CT');
insert into STUDENT_UNIT values ('8888888','ICT220','1BD - CT');
insert into STUDENT_UNIT values ('9999999','ICT220','1BD - CT');
insert into STUDENT_UNIT values ('1212121','ICT220','1BD - CT');
insert into STUDENT_UNIT values ('1313131','ICT220','1BD - CT');
insert into STUDENT_UNIT values ('1414141','ICT220','1BD - CT');
insert into STUDENT_UNIT values ('1515151','ICT220','1BD - CT');
insert into STUDENT_UNIT values ('1616161','ICT321','1BD - CT');
insert into STUDENT_UNIT values ('1717171','ICT321','1BD - CT');
insert into STUDENT_UNIT values ('1818181','ICT321','1BD - CT');
insert into STUDENT_UNIT values ('1919191','ICT316','1BD - CT');
insert into STUDENT_UNIT values ('1111111','ICT316','1BD - CT');
insert into STUDENT_UNIT values ('2222222','ICT316','1BD - CT');
insert into STUDENT_UNIT values ('3333333','ICT316','1BD - CT');
insert into STUDENT_UNIT values ('4444444','ICT316','1BD - CT');
insert into STUDENT_UNIT values ('5555555','ICT326','1BD - CT');
insert into STUDENT_UNIT values ('6666666','ICT326','1BD - CT');
insert into STUDENT_UNIT values ('7777777','ICT326','1BD - CT');
insert into STUDENT_UNIT values ('8888888','ICT326','1BD - CT');
insert into STUDENT_UNIT values ('9999999','ICT326','1BD - CT');
insert into STUDENT_UNIT values ('1212121','ICT326','1BD - CT');
insert into STUDENT_UNIT values ('1313131','ICT316','1BD - CT');
insert into STUDENT_UNIT values ('1414141','ICT316','1BD - CT');
insert into STUDENT_UNIT values ('1515151','ICT326','1BD - CT');
insert into STUDENT_UNIT values ('1616161','ICT326','1BD - CT');
insert into STUDENT_UNIT values ('1717171','ICT326','1BD - CT');
insert into STUDENT_UNIT values ('1818181','ICT326','1BD - CT');

```

COMMIT;

```

insert into UNIT_START values ('ICT113', '19-FEB-07', 120);
insert into UNIT_START values ('ICT111', '19-FEB-07', 130);
insert into UNIT_START values ('ICT212', '18-JUN-07', 80);
COMMIT;

```

```

insert into TIMETABLE values ('0000000001','ICT113','SBUTTON','N1.G82','NEL',to_date('19-FEB-07
9:00','DD-MON-YY HH24:MI'),2,0,'1BD - CT');
insert into TIMETABLE values ('0000000002','ICT113','SBUTTON','N1.G82','NEL',to_date('26-FEB-07
9:00','DD-MON-YY HH24:MI'),2,0,'1BD - CT');
insert into TIMETABLE values ('0000000003','ICT113','SBUTTON','N1.G82','NEL',to_date('5-MAR-07
9:00','DD-MON-YY HH24:MI'),2,0,'1BD - CT');
insert into TIMETABLE values ('0000000004','ICT113','SBUTTON','N1.G82','NEL',to_date('12-MAR-07
9:00','DD-MON-YY HH24:MI'),2,0,'1BD - CT');
insert into TIMETABLE values ('0000000005','ICT113','SBUTTON','N1.G82','NEL',to_date('19-MAR-07
9:00','DD-MON-YY HH24:MI'),2,0,'1BD - CT');
insert into TIMETABLE values ('0000000006','ICT113','SBUTTON','N1.G82','NEL',to_date('26-MAR-07
9:00','DD-MON-YY HH24:MI'),2,0,'1BD - CT');
insert into TIMETABLE values ('0000000007','ICT113','SBUTTON','N1.G82','NEL',to_date('16-APR-07
9:00','DD-MON-YY HH24:MI'),2,0,'1BD - CT');
insert into TIMETABLE values ('0000000008','ICT113','SBUTTON','N1.G82','NEL',to_date('23-APR-07
9:00','DD-MON-YY HH24:MI'),2,0,'1BD - CT');
insert into TIMETABLE values ('0000000009','ICT113','SBUTTON','N1.G82','NEL',to_date('30-APR-07
9:00','DD-MON-YY HH24:MI'),2,0,'1BD - CT');
insert into TIMETABLE values ('0000000010','ICT113','SBUTTON','N1.G82','NEL',to_date('7-MAY-07
9:00','DD-MON-YY HH24:MI'),2,0,'1BD - CT');
insert into TIMETABLE values ('0000000011','ICT113','SBUTTON','N1.G82','NEL',to_date('14-MAY-07
9:00','DD-MON-YY HH24:MI'),2,0,'1BD - CT');

```



```

insert into TIMETABLE values ('0000000402','ICT113','SMITRA','N1.143','NEL',to_date('25-MAY-07
13:00','DD-MON-YY HH24:MI'),4,0,'1BD - CT');
insert into TIMETABLE values ('0000000403','ICT113','SMITRA','N1.143','NEL',to_date('01-MAY-07
13:00','DD-MON-YY HH24:MI'),4,0,'1BD - CT');
insert into TIMETABLE values ('0000000404','ICT113','SMITRA','N1.143','NEL',to_date('15-JUN-07
13:00','DD-MON-YY HH24:MI'),4,0,'1BD - CT');
insert into TIMETABLE values ('0000000405','ICT113','SMITRA','N1.143','NEL',to_date('21-JUN-07
13:00','DD-MON-YY HH24:MI'),4,0,'1BD - CT');
insert into TIMETABLE values ('0000000406','ICT321','UPATEL','N1.160','NEL',to_date('23-FEB-07
18:00','DD-MON-YY HH24:MI'),4,0,'1BD - CT');
insert into TIMETABLE values ('0000000407','ICT321','UPATEL','N1.160','NEL',to_date('02-MAR-07
18:00','DD-MON-YY HH24:MI'),4,0,'1BD - CT');
insert into TIMETABLE values ('0000000408','ICT321','UPATEL','N1.160','NEL',to_date('09-MAR-07
18:00','DD-MON-YY HH24:MI'),4,0,'1BD - CT');
insert into TIMETABLE values ('0000000409','ICT321','UPATEL','N1.160','NEL',to_date('16-MAR-07
18:00','DD-MON-YY HH24:MI'),4,0,'1BD - CT');
insert into TIMETABLE values ('0000000410','ICT321','UPATEL','N1.160','NEL',to_date('23-MAR-07
18:00','DD-MON-YY HH24:MI'),4,0,'1BD - CT');
insert into TIMETABLE values ('0000000411','ICT321','UPATEL','N1.160','NEL',to_date('30-MAR-07
18:00','DD-MON-YY HH24:MI'),4,0,'1BD - CT');
insert into TIMETABLE values ('0000000412','ICT321','UPATEL','N1.160','NEL',to_date('20-APR-07
18:00','DD-MON-YY HH24:MI'),4,0,'1BD - CT');
insert into TIMETABLE values ('0000000413','ICT321','UPATEL','N1.160','NEL',to_date('27-APR-07
18:00','DD-MON-YY HH24:MI'),4,0,'1BD - CT');
insert into TIMETABLE values ('0000000414','ICT321','UPATEL','N1.160','NEL',to_date('04-MAY-07
18:00','DD-MON-YY HH24:MI'),4,0,'1BD - CT');
insert into TIMETABLE values ('0000000415','ICT321','UPATEL','N1.160','NEL',to_date('11-MAY-07
18:00','DD-MON-YY HH24:MI'),4,0,'1BD - CT');
insert into TIMETABLE values ('0000000416','ICT321','UPATEL','N1.160','NEL',to_date('18-MAY-07
18:00','DD-MON-YY HH24:MI'),4,0,'1BD - CT');
insert into TIMETABLE values ('0000000417','ICT321','UPATEL','N1.160','NEL',to_date('25-MAY-07
18:00','DD-MON-YY HH24:MI'),4,0,'1BD - CT');
insert into TIMETABLE values ('0000000418','ICT321','UPATEL','N1.160','NEL',to_date('01-MAY-07
18:00','DD-MON-YY HH24:MI'),4,0,'1BD - CT');
insert into TIMETABLE values ('0000000419','ICT321','UPATEL','N1.160','NEL',to_date('15-JUN-07
18:00','DD-MON-YY HH24:MI'),4,0,'1BD - CT');
insert into TIMETABLE values ('0000000420','ICT321','UPATEL','N1.160','NEL',to_date('21-JUN-07
18:00','DD-MON-YY HH24:MI'),4,0,'1BD - CT');
COMMIT;

```

Delete Existing Users

```

DROP USER SBUTTON;
DROP USER FMENTIPLAY;
DROP USER SMITRA;
DROP USER SBESFORD;
DROP USER KMCKENZIE;
DROP USER UPATEL;
DROP USER RSALOMON;
DROP USER KPATEL;
DROP USER NFINCH;
DROP USER IALLSOP;
DROP USER JWAITE;
COMMIT;

```

Create New Dummy Users

```

CREATE USER SBUTTON IDENTIFIED BY PASSWORD;
CREATE USER FMENIPLAY IDENTIFIED BY PASSWORD;
CREATE USER SMITRA IDENTIFIED BY PASSWORD;
CREATE USER SBESFORD IDENTIFIED BY PASSWORD;
CREATE USER KMCKENZIE IDENTIFIED BY PASSWORD;
CREATE USER UPATEL IDENTIFIED BY PASSWORD;
CREATE USER RSALOMON IDENTIFIED BY PASSWORD;
CREATE USER KPATEL IDENTIFIED BY PASSWORD;
CREATE USER NFINCH IDENTIFIED BY PASSWORD;
CREATE USER IALLSOP IDENTIFIED BY PASSWORD;
CREATE USER JWAITE IDENTIFIED BY PASSWORD;
COMMIT;

```

Grant Permission to New Dummy Users

```

GRANT CREATE SESSION TO SBUTTON;
GRANT CREATE SESSION TO FMENIPLAY;
GRANT CREATE SESSION TO SMITRA;
GRANT CREATE SESSION TO SBESFORD;
GRANT CREATE SESSION TO KMCKENZIE;
GRANT CREATE SESSION TO UPATEL;
GRANT CREATE SESSION TO RSALOMON;
GRANT CREATE SESSION TO KPATEL;
GRANT CREATE SESSION TO NFINCH;
GRANT CREATE SESSION TO IALLSOP;
GRANT CREATE SESSION TO JWAITE;
COMMIT;

```

```

GRANT SELECT ON snocker.TIMETABLE TO NFINCH, IALLSOP, JWAITE, SBUTTON,
FMENIPLAY, SMITRA, SBESFORD, KMCKENZIE, UPATEL, RSALOMON, KPATEL;
GRANT SELECT ON snocker.STUDENT TO NFINCH, IALLSOP, JWAITE, SBUTTON,
FMENIPLAY, SMITRA, SBESFORD, KMCKENZIE, UPATEL, RSALOMON, KPATEL;
GRANT SELECT ON snocker.STUDENT_UNIT TO NFINCH, IALLSOP, JWAITE, SBUTTON,
FMENIPLAY, SMITRA, SBESFORD, KMCKENZIE, UPATEL, RSALOMON, KPATEL;
GRANT SELECT ON snocker.UNIT_REG TO NFINCH, IALLSOP, JWAITE, SBUTTON,
FMENIPLAY, SMITRA, SBESFORD, KMCKENZIE, UPATEL, RSALOMON, KPATEL;
GRANT SELECT ON snocker.STUDENT_REGISTER TO NFINCH, IALLSOP, JWAITE, SBUTTON,
FMENIPLAY, SMITRA, SBESFORD, KMCKENZIE, UPATEL, RSALOMON, KPATEL;
GRANT SELECT ON snocker.TEMP_REG TO NFINCH, IALLSOP, JWAITE, SBUTTON,
FMENIPLAY, SMITRA, SBESFORD, KMCKENZIE, UPATEL, RSALOMON, KPATEL;
GRANT SELECT ON snocker.DUMMY_REG TO NFINCH, IALLSOP, JWAITE, SBUTTON,
FMENIPLAY, SMITRA, SBESFORD, KMCKENZIE, UPATEL, RSALOMON, KPATEL;
COMMIT;

```

```

GRANT INSERT ON snocker.STUDENT_REGISTER TO NFINCH, IALLSOP, JWAITE, SBUTTON,
FMENIPLAY, SMITRA, SBESFORD, KMCKENZIE, UPATEL, RSALOMON, KPATEL;
GRANT INSERT ON snocker.TEMP_REG TO NFINCH, IALLSOP, JWAITE, SBUTTON,
FMENIPLAY, SMITRA, SBESFORD, KMCKENZIE, UPATEL, RSALOMON, KPATEL;
GRANT UPDATE ON snocker.TEMP_REG TO NFINCH, IALLSOP, JWAITE, SBUTTON,
FMENIPLAY, SMITRA, SBESFORD, KMCKENZIE, UPATEL, RSALOMON, KPATEL;
GRANT DELETE ON snocker.TEMP_REG TO NFINCH, IALLSOP, JWAITE, SBUTTON,
FMENIPLAY, SMITRA, SBESFORD, KMCKENZIE, UPATEL, RSALOMON, KPATEL;
GRANT INSERT ON snocker.DUMMY_REG TO NFINCH, IALLSOP, JWAITE, SBUTTON,
FMENIPLAY, SMITRA, SBESFORD, KMCKENZIE, UPATEL, RSALOMON, KPATEL;
GRANT DELETE ON snocker.DUMMY_REG TO NFINCH, IALLSOP, JWAITE, SBUTTON,
FMENIPLAY, SMITRA, SBESFORD, KMCKENZIE, UPATEL, RSALOMON, KPATEL;
COMMIT;

```

14. Cisco XML Objects

CiscoIPPhoneMenu

| Definition | Range | SoftKey:URLs |
|---|---|--|
| <pre><CiscoIPPhoneMenu> <Title>Title text goes here</Title> <Prompt>Prompt text goes here</Prompt> <MenuItem> <Name>The name of each menu item</Name> <URL>The URL associated with the menu item</URL> </MenuItem> <SoftKeyItem> <Name>Name of soft key</Name> <URL>URL or URI of soft key</URL> <Position>Position information of the soft key</Position> </SoftKeyItem> </CiscoIPPhoneMenu></pre> | <pre>CiscoIPPhoneMenu Title: ANSI string up to 32 characters Prompt: ANSI string up to 32 characters Up to 32 instances of MenuItem Name: ANSI string up to 64 characters URL: ANSI string up to 256 characters Up to 8 instances of SoftKeyItem Name: ANSI string up to 32 characters URL: ANSI string up to 256 characters Position: Single-digit numeric value from 1 to 8</pre> | <pre>SoftKey:Select SoftKey:Exit</pre> |

CiscoIPPhoneText

| Definition | Range | SoftKey:URLs |
|---|---|--|
| <pre><CiscoIPPhoneText> <Title>Title text goes here</Title> <Prompt>The prompt text goes here</Prompt> <Text>The text to be displayed as the message body goes here</Text> <SoftKeyItem> <Name>Name of soft key</Name> <URL>URL or URI of soft key</URL> <Position>Position information of the soft key</Position> </SoftKeyItem> </CiscoIPPhoneText></pre> | <pre>CiscoIPPhoneText Title: ANSI string up to 32 characters Prompt: ANSI string up to 32 characters Text: ANSI string up to 4000 characters Up to 8 SoftKeyItem Name: ANSI string up to 32 characters URL: ANSI string up to 256 characters Position: Single-digit numeric value from 1 to 8</pre> | <pre>SoftKet:Update SoftKey:Exit</pre> |

CiscoIPPhoneInput

| Definition | Range | SoftKey:URIs |
|---|---|---|
| <pre><CiscoIPPhoneInput> <Title>Directory title goes here</Title> <Prompt>Prompt text goes here</Prompt> <URL>The target URL for the completed input goes here</URL> <InputItem> <DisplayName>Name of the input field to display</DisplayName> <QueryStringParam>The parameter to be added to the target URL</QueryStringParam> <DefaultValue>The default display name</DefaultValue> <InputFlags>The flag specifying the type of allowable input</InputFlags> </InputItem> <SoftKeyItem> <Name>Name of soft key</Name> <URL>URL or URI of soft key</URL> <Position>Position information of the soft key</Position> </SoftKeyItem> </CiscoIPPhoneInput></pre> | <pre>CiscoIPPhoneInput Title: ANSI string up to 32 characters Prompt: ANSI string up to 32 characters URL: ANSI string up to 256 characters Up to 5 instances of InputItem Display Name: ANSI string up to 32 characters QueryStringParam: ANSI string up to 32 characters Default Value: ANSI string up to 32 characters InputFlags: ANSI string up to 3 characters Up to 8 SoftKeyItem Name: ANSI string up to 32 characters URL: ANSI string up to 256 characters Position: Single-digit numeric value from 1 to 8</pre> | <pre>SoftKey:Submit SoftKey:<< SoftKey:Cancel</pre> |

CiscoIPPhoneDirectory

| Definition | Range | SoftKey:URIs |
|---|--|--|
| <pre><CiscoIPPhoneDirectory> <Title>Directory title goes here</Title> <Prompt>Prompt text goes here</Prompt> <DirectoryEntry> <Name>The name of the directory entry</Name> <Telephone>The telephone number for the entry</Telephone> </DirectoryEntry> <SoftKeyItem> <Name>Name of soft key</Name> <URL>URL or URI of soft key</URL> <Position>Position</pre> | <pre>CiscoIPPhoneDirectory Title: ANSI string up to 32 characters Prompt: ANSI string up to 32 characters Up to 32 DirectoryEntrys Name: ANSI string up to 64 characters Telephone: ANSI string up to 32 characters Up to 8 SoftKeyItem Name: ANSI string up to 32 characters URL: ANSI string up to 256 characters Position: Single-digit</pre> | <pre>SoftKey:Dial SoftKey>EditDial SoftKey:Cancel</pre> |

| | | |
|--|---------------------------|--|
| information of the soft key</Position></SoftKeyItem></CiscoIPPhoneDirectory> | numeric value from 1 to 8 | |
|--|---------------------------|--|

CiscoIPPhoneImage

| Definition | Range | SoftKey:URIs |
|--|---|--|
| <pre><CiscoIPPhoneImage> <Title>Image title goes here</Title> <Prompt>Prompt text goes here</Prompt> <LocationX>Position information of graphic</LocationX> <LocationY>Position information of graphic</LocationY> <Width>Size information for the graphic</Width> <Height>Size information for the graphic</Height> <Depth>Number of bits per pixel</Depth> <Data>Packed pixel data</Data> <SoftKeyItem> <Name>Name of soft key</Name> <URL>URL of soft key</URL> <Position>Numerical position of the soft key</Position> </SoftKeyItem> </CiscoIPPhoneImage></pre> | <pre>CiscoIPPhoneImage Title: ANSI string up to 32 characters Prompt: ANSI string up to 32 characters LocationX: Signed16 LocationY: Signed16 Width: Unsigned16 Height: Unsigned16 Depth: Unsigned16 Data: Hexadecimal value up to 2200 Up to 8 instances of SoftKeyItem Name: ANSI string up to 32 characters URL: ANSI string up to 256 characters Position: Single-digit numeric value from 1 to 8</pre> | <pre>SoftKey:Update SoftKey:Exit</pre> |

CiscoIPPhoneGraphicMenu

| Definition | Range | SoftKey:URIs |
|---|---|--|
| <pre><CiscoIPPhoneGraphicMenu> <Title>Menu title goes here</Title> <Prompt>Prompt text goes here</Prompt> <LocationX>Position information of graphic</LocationX> <LocationY>Position information of graphic</LocationY> <Width>Size information for the graphic</Width> <Height>Size information for the graphic</Height></pre> | <pre>CiscoIPPhoneGraphicMenu Title: ANSI string up to 32 characters Prompt: ANSI string up to 32 characters LocationX: Signed16 LocationY: Signed16 Width: Unsigned16 Height: Unsigned16 Depth: Unsigned16 Data: Hexadecimal value up to 2200 Up to 12 instances of MenuItem Name: ANSI string up to 64</pre> | <pre>SoftKey:Update SoftKey:Exit</pre> |

| | | |
|--|--|--|
| <pre> <Depth>Number of bits per pixel</Depth> <Data>Packed pixel data</Data> <MenuItem> <Name>The name of each menu item</Name> <URL>The URL associated with the menu item</URL> </MenuItem> <SoftKeyItem> <Name>Name of soft key</Name> <URL>URL of soft key</URL> <Position>Numerical position of the soft key</Position> </SoftKeyItem> </CiscoIPPhoneGraphicMenu> </pre> | <pre> characters URL: ANSI string up to 256 characters Up to 8 instances of SoftKeyItem Name: ANSI string up to 32 characters URL: ANSI string up to 256 characters Position: Single-digit numeric value from 1 to 8 </pre> | |
|--|--|--|

CiscoIPPhoneIconMenu

| Definition | Range | SoftKey:URIs |
|--|---|--|
| <pre> <CiscoIPPhoneIconMenu> <Title>Title text goes here</Title> <Prompt>Prompt text goes here</Prompt> <MenuItem> <Name>The name of each menu item</Name> <URL>The URL associated with the menu item</URL> </MenuItem> <IconItem> <IconIndex>Numeric identifier of the custom icon to be displayed next to the item</IconIndex> <Width>Size information for the graphic</Width> <Height>Size information for the graphic</Height> <Depth>Number of bits per pixel</Depth> <Data>Packed pixel data</Data> </IconItem> <SoftKeyItem> <Name>Name of soft key</Name> <URL>URL of soft key</URL> <Position>Numerical position of the soft key</Position> </SoftKeyItem> </CiscoIPPhoneIconMenu> </pre> | <pre> CiscoIPPhoneIconMenu Title: ANSI string up to 32 characters Prompt: ANSI string up to 32 characters Up to 32 instances of MenuItem Name: ANSI string up to 32 characters URL: ANSI string up to 256 characters Up to 10 instances of IconItem IconIndex: Unsigned16 Width: Unsigned16 Height: Unsigned16 Depth: Unsigned16 Data: Hexadecimal value up to 25 Up to 8 instances of SoftKeyItem Name: ANSI string up to 32 characters URL: ANSI string up to 256 characters Position: Single-digit numeric value from 1 to 8 </pre> | <pre> SoftKey:Select SoftKey:Exit </pre> |

CiscoIPPhoneExecute

| Definition | Range | SoftKey:URIs |
|--|--|--------------|
| <pre><CiscoIPPhoneExecute> <ExecuteItem URL="The action you want the phone to take"/> </CiscoIPPhoneExecute></pre> | CiscoIPPhoneIconExecute Up to 3 instances of ExecuteItem URL: ANSI string up to 256 characters | |

CiscoIPPhoneResponse

| Definition | Range | SoftKey:URIs |
|---|--|--------------|
| <pre><CiscoIPPhoneResponse> <ResponseItem Status="the success or failure of the action" Data="the information associated with the request" URL="the URL or URI specified in the Execute object"/> </CiscoIPPhoneResponse></pre> | CiscoIPPhoneIconResponse Up to 3 instances of ResponseItem Status: Unsigned16 Data: ANSI string up to 32 characters URL: ANSI string up to 256 characters | |

15.Alternative Menu



IconMenu.aspx

```
<%@ Page Language="VB" AutoEventWireup="false" CodeFile="IconMenu.aspx.vb" Inherits="_IconMenu" %>
```

IconMenu.aspx.vb

```
Partial Class _IconMenu  
    Inherits System.Web.UI.Page
```

```
    Protected Sub Page_Load(ByVal sender As Object, ByVal e As System.EventArgs) Handles Me.Load  
        Response.ContentType = "text/xml"
```

```
    dim classname as String  
    classname = "ICT123"
```

```
    dim studentcount as Integer  
    dim studentloop As Integer  
        studentcount = 3  
        studentcount = studentcount - 1
```

```
    Dim studentname() As String = {"Tom", "Dick", "Harry"}  
    Dim iconindexnum() As integer = {0,1,2}
```

```
    dim i as integer
```

```
        Response.Write("<CiscoIPPhoneIconMenu>" + Environment.NewLine())  
        Response.Write("<Title>Class: " & classname & "</Title>" + Environment.NewLine())  
        Response.Write("<Prompt>Select Student and Attendance</Prompt>" + Environment.NewLine())
```

```
        For i = 0 To studentcount Step 1  
            Response.Write("<MenuItem>" + Environment.NewLine())  
            Response.Write("<IconIndex>" & iconindexnum(i) & "</IconIndex>" + Environment.NewLine())
```

```

Response.Write("<Name>" & studentname(i) & "</Name>" + Environment.NewLine())
Response.Write("<URL></URL>" + Environment.NewLine())
Response.Write("</MenuItem>" + Environment.NewLine())

```

Next i

```

'Icons
' 0 = Absent
' 1 = Present
' 2 = Late

```

```

Response.Write("<IconItem>" + Environment.NewLine())
Response.Write("<Index>0</Index>" + Environment.NewLine())
Response.Write("<Height>8</Height>" + Environment.NewLine())
Response.Write("<Width>4</Width>" + Environment.NewLine())
Response.Write("<Depth>2</Depth>" + Environment.NewLine())
Response.Write("<Data>FFFFFFFFFFFFFFFF</Data>" + Environment.NewLine())
Response.Write("</IconItem>" + Environment.NewLine())

```

```

Response.Write("<IconItem>" + Environment.NewLine())
Response.Write("<Index>1</Index>" + Environment.NewLine())
Response.Write("<Height>8</Height>" + Environment.NewLine())
Response.Write("<Width>4</Width>" + Environment.NewLine())
Response.Write("<Depth>2</Depth>" + Environment.NewLine())
Response.Write("<Data>FFFFFFFF00000000</Data>" + Environment.NewLine())
Response.Write("</IconItem>" + Environment.NewLine())

```

```

Response.Write("<IconItem>" + Environment.NewLine())
Response.Write("<Index>2</Index>" + Environment.NewLine())
Response.Write("<Height>8</Height>" + Environment.NewLine())
Response.Write("<Width>4</Width>" + Environment.NewLine())
Response.Write("<Depth>2</Depth>" + Environment.NewLine())
Response.Write("<Data>0000FFFFFFFF0000</Data>" + Environment.NewLine())
Response.Write("</IconItem>" + Environment.NewLine())

```

'Softkey buttons, need to incorporate sending data back in header (ie: absent, present etc), these should be dependant on the button press, and then put variable = 1 etc for position/button x

```

Response.write("<SoftKeyItem>")
Response.write("<Name>Present</Name>")
Response.write("<URL></URL>")
Response.write("<Position>1</Position>")
Response.write("</SoftKeyItem>")
Response.write("<SoftKeyItem>")
Response.write("<Name>Absent</Name>")
Response.write("<URL></URL>")
Response.write("<Position>2</Position>")
Response.write("</SoftKeyItem>")
Response.write("<SoftKeyItem>")
Response.write("<Name>Late</Name>")
Response.write("<URL></URL>")
Response.write("<Position>3</Position>")
Response.write("</SoftKeyItem>")
Response.write("<SoftKeyItem>")
Response.write("<Name>Approved Absence</Name>")
Response.write("<URL></URL>")
Response.write("<Position>4</Position>")
Response.write("</SoftKeyItem>")
Response.write("<SoftKeyItem>")
Response.write("<Name>Help</Name>")
Response.write("<URL></URL>")

```

```
Response.write("<Position>5</Position>")
Response.write("</SoftKeyItem>")
Response.write("<SoftKeyItem>")
Response.write("<Name>Help</Name>")
Response.write("<URL></URL>")
Response.write("<Position>6</Position>")
Response.write("</SoftKeyItem>")
Response.write("<SoftKeyItem>")
Response.write("<Name>Exit</Name>")
Response.write("<URL></URL>")
Response.write("<Position>7</Position>")
Response.write("</SoftKeyItem>")

Response.write("</CiscoIPPhoneIconMenu>" + Environment.NewLine())
```

End Sub

End Class