

Original Research Article

Diabetes registry initiative in Delta State Nigeria: narrative of the kick-off experience

Eunice O. Igumbor¹, Otovwe Agofure¹, Chukwuma Onyimi²,
Phillip T. Bwititi³, Ezekiel U. Nwose^{4*}

¹Department of Public and Community Health, Novena University, Nigeria

²Catholic Hospital Abbi, Delta State, Nigeria

³Department of Biomedical Sciences, Charles Sturt University, NSW, Australia

⁴Department of Community Health, Charles Sturt University, NSW, Australia

Received: 15 October 2019

Revised: 28 November 2019

Accepted: 02 December 2019

***Correspondence:**

Dr. Ezekiel U. Nwose,

E-mail: enwose@csu.edu.au

Copyright: © the author(s), publisher and licensee Medip Academy. This is an open-access article distributed under the terms of the Creative Commons Attribution Non-Commercial License, which permits unrestricted non-commercial use, distribution, and reproduction in any medium, provided the original work is properly cited.

ABSTRACT

Background: This is parallel with the piece of work on behavioral change wheel of healthcare professionals. The objective is to assess how much standard diabetes care service that is available in the community-based health facility and the barriers to patients' participation.

Methods: This was based on free diabetes clinics, which constituted the beginning of the development of diabetes register series. Observational study and surveys were conducted to determine scope service available in the hospital and factors that influence participation of patients.

Results: It is observed that lack of hospital consultants is the greatest 'health system' barrier faced by the individuals living with diabetes.

Conclusions: There is a need for individuals living with diabetes to be educated on the importance of adherence to medical check-up appointments. The healthcare professionals and providers also need professional development on the importance of diabetes register in the management of patients.

Keywords: Barriers to participation, Diabetes clinic, General practice

INTRODUCTION

Despite the knowledge of prevalence of diabetes and that in some communities, patients may not seek medical intervention for various reasons such as costs and lack of knowledge, some healthcare facilities lack mechanism to identify and follow up such patients.¹ Special disease registry is a quality improvement strategy for high-quality diabetes management system.² It has been noted that diabetes register can be used in the chronic care model to effectively manage patients including improving

clinicians' adherence to guidelines. For instance, ensuring necessary data collection, organising patient education and communication, for patients to receive information and for reminders.³⁻⁶

It has been suggested on the basis of review findings that diabetes register should be an essential element, not an option, in diabetes care; especially because clinical outcomes improve.⁷ Despite the known benefits, such registers are lacking while diabetes care is still needing better organization, and Nigeria is no exception.^{8,9}

Therefore, this pilot study is to investigate the significance of diabetes register in management and care for diabetes patients. The research inquiries are on the basis of free diabetes clinics, to determine the:

- Response rate to diabetes clinic invitations
- How much of standard services are available in the community
- Challenges to community participation.

METHODS

Study design

The study adopted clinical observational approach, as well as questionnaire survey method. Clinical observation was based on free monthly diabetes clinic program, which was set to establish diabetes mellitus and heart disease register in the study location. The survey employed two standard questionnaires including one adopted from the UK (Figure 1); and the health literacy questionnaire in part 1 of this series. The descriptive cross-sectional method evaluated ‘how glycaemic control among diabetes patients was assessed and the prevalence of common metabolic syndrome factors’.

Study setting

Clinical observational study was carried out at Catholic Hospital Abbi, Ndokwa local government area of Delta State. Survey of primary healthcare professionals (PHP) was done at the Catholic Hospital as well as in the health facilities in neighbouring rural and suburban communities in Ndokwa West and Ukwani local government areas.

Inclusion criteria

Patients included members of the community, all aged over 18 years old and comprising both gender, who were screened for diabetes at Catholic Hospital Abbi and were diagnosed as diabetic. HCPs included.

Data collection

The development of diabetes registers with simultaneous audit of medical records was during October 2017 - February 2018. First, the Australian diabetes register proforma was adopted and edited to develop Excel sheet on computer; with proposal for 44 pieces of clinical and demographic information. Participants were invited to attend diabetes clinic based on their medical records. Data collection were according the pre-developed diabetes register proforma i.e. as many of the necessary information that could be collected and therefore data collected included:

1. % attendance
2. % DM diagnosis - audit of diabetes register
3. checklist of services available/unavailable
4. Notes from DM clinic

5. Surveys - health literacy of patients and perspectives of PHP

Statistical analysis

Data generated from questionnaire and test results was analyzed using Microsoft Excel Data Analysis Toolpak 2010.

Survey questionnaire of diabetes care in general practice		
1	Name of hospital:	
2	Contact details of Health practitioners:	
3	The Organisation of diabetes care	Yes No
4	Would you describe your practice as having a special interest in diabetes?	
5	What is the total number of people with diabetes in your hospital?	
6	What percentage of these patients are attending most or all of their routine check-ups?	
7	What are the common reasons patients fail to attend their medical appointments?	*
8	Do you have an active register of patients with diabetes in your practice	
9	If yes that there is register: Is it used for call/recall of your diabetes patients?	
10	If there is no register: If no, do you wish to have a diabetes register?	
11	Do you have dedicated time for diabetes-only clinics in the hospital?	
12	If yes there is diabetes clinic: Do you have dedicated Diabetes specialist staff/team?	
13	Who runs the clinic?	<<>>>>
14	GP and nurse	
15	Nurse alone	
16	GP alone	
17	Do you have a specialist Endocrinologist to whom diabetes patients may be referred, if required?	
18	Median number of patients seen per clinic	
19	If there is no diabetes clinic: If no, do you wish to start running a diabetes clinic?	
20	If yes: you wish to start diabetes clinic: what could be barriers to implementation?	**
21	Attendance at courses/meetings related to diabetes education	<<>>>>
22	Courses duration half a day	
23	Course duration one day	
24	Course duration more than one day	
25	Duration not known	
26	How do you monitor diabetes patients for response to their glycaemic control?	<<>>>>
27	Blood sugar level (fasting &/or random) test only	
28	Glycated haemoglobin (HbA1c) test only	
29	Both blood sugar level and HbA1c tests	
30	Others methods (please specify)	***
31	Problems and barriers to care you have encountered in managing diabetes patients or relatives	<<>>>>
32	Getting patients to alter lifestyle	
33	Lack of time	
34	Communications with secondary care	
35	Patient non-compliance	
36	Non-attendance of patients	
37	Inadequate chiropody services	
38	Inadequate ophthalmology services	
39	Lack of access to hospital consultants	
*	_____	
**	_____	
***	_____	

Figure 1: One of the two questionnaires.^{10,11}

RESULTS

Response rate to diabetes clinic invitations in the community

It was planned that more than 30 patients would be screened from October to December 2017. Making provision for non-attendance, a total of 130 who were screened and were positive for hyperglycaemia suggestive of diabetes but did not come back to confirm previous screening results, were recalled to attend trialled monthly diabetes clinic. Further invitations were done in the months of January and March 2018 and the attendance and non-attendance rates are presented (Table 1). In the first schedule the relative frequency of attendance was higher than non-attendance and this was reversed in third schedule. In second and fourth schedules, relative frequencies of attendances and non-attendances appear to be on par. In regards to absolute frequency the non-attendance was high by comparison with attendance (Figure 2).

Table 1: Attendance at the monthly diabetes clinic.

Month	Invitation	Attendance	Non-attendance	Comment
20/10/2017	30	15	15	
11/11/2017	50	18	32	†
15/12/2017	50	14	36	
17/01/2018	50	17	33	†‡
20/03/2018	Unknown	100	Inestimable	*

†Invitation by phone calls based on previous screening records, ‡Invitees included members of civil and Church groups, *Invitation for screening was by public announcement using ‘town crier’ for 3 days.

Table 2: Number of entries on the diabetes register (n=42).

Variables	Number	%
Females	19	11.18
Males	23	13.53
Type 2 diabetes	36	21.18
Type 1 diabetes	4	2.35
Prediabetes	2	1.18
RBS	19	11.18
FBS	23	13.53
Total cholesterol	28	16.47
HDL cholesterol	28	16.47
BMI	27	15.88

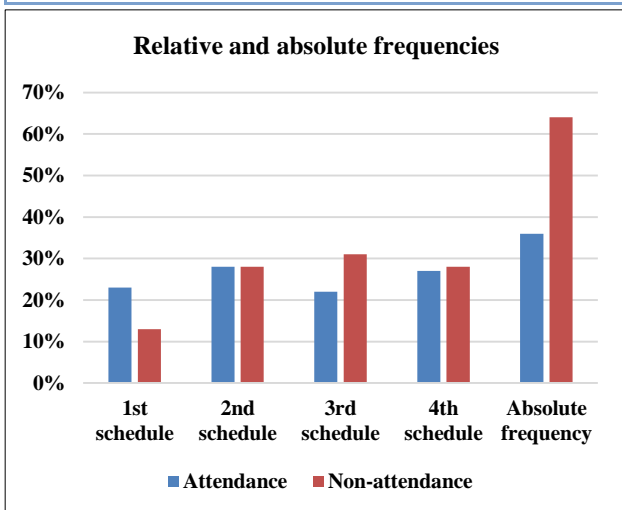


Figure 2: Frequencies of attendance and non-attendance (n=180).

A total of 42 diagnoses of diabetes were made and entered onto the register. This constitutes 25.6% of the 164 clients who were screened. Audit of the register for available services shows some results such a BMI and cholesterol profile are not immediately entered (Table 2). On the evaluation of those with results of metabolic syndrome factors, results indicate that 9/164 ($\approx 5.49\%$) of participants had at least two out of the three parameters for metabolic syndrome. Another 21/164 ($\approx 12.80\%$) had abnormal level of BMI, HDL or total cholesterol in addition to diabetes (Figure 3).

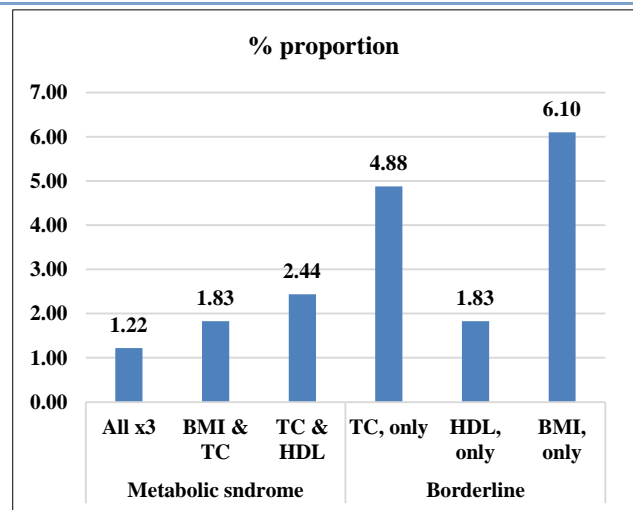


Figure 3: Level and nature of metabolic syndrome in the diabetes register (n=42).

How much of standard services are available in the community: Initial evaluation of '20 HCP' at the hospital indicate that

- 80% claim there are endocrinologist to refer patients
- 40% with to have diabetes register
- 35% think there is active record of diabetes patients, but only
 - a. 10% believe the record is useful for patients' recall
 - b. 20% believe the hospital has special interest in diabetes care

Evaluation of those who responded ‘No’ to the survey questions on “problems and barriers to care encountered in managing diabetes patients” showed that 87% respondents disagreed that inadequate foot care was a problem, while 19% disagreed on eye specialist that was a barrier (Figure 4).

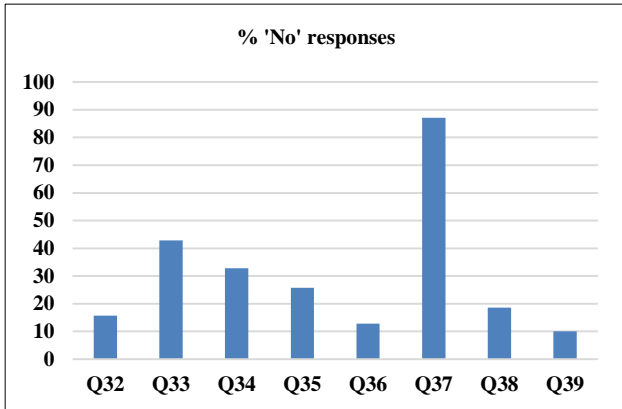


Figure 4: Percentage proportion of responses that disagreed with itemised challenges.

Keys: Q32: Getting patients to alter lifestyle; Q33: Lack of time; Q34: Communications with secondary care; Q35: Patient non-compliance; Q36: Non-attendance of patients; Q37: Inadequate chiropody services; Q38: Inadequate ophthalmology services; Q39: Lack of access to hospital consultants.

Challenges to community participation

Percentage non-attendance

Monthly diabetes clinic between 10/2017 - 01/2018; and development of register. In this evaluation, the focus was on non-affirmative responses that indicate potential barriers to diabetes patients’ health seeking behaviours. The results show that 82.9% of the ‘N = 70’ respondents believe their health facilities did not have special interest in diabetes, and up to 14.3% do not wish to start running a diabetes clinic (Table 3).

Reasons for non-attendance and relative frequency of ‘each reason’

On analysis of the responses to the ‘problems and barriers to care encountered in managing diabetes patients or relatives’, getting access to consultants was indicated by 63 out of the 70 respondents, while communications with i.e. referral systems to secondary healthcare and lack of time are also indicated by over 40/70. Further critical review for the percentage distribution of barriers to care encountered in managing diabetes patients indicates that non-availability of specialist chiropody (diabetes foot care) service is the least of concerns (Table 4).

Table 3: Descriptive statistics of non-affirmative responses to questions on services (n=70).

Health facility has no	N	%
Special interest in diabetes	58	82.9
Active register of patients with diabetes	52	74.3
Dedicated time for diabetes clinics	51	72.9
Endocrinology specialist to whom diabetes patients may be referred	43	61.4
Wish to start running a diabetes clinic	10	14.3
	Mean	SD
What is the total number of people with diabetes in your hospital?	126	21
What percentage of these patients who fail to attend their routine check-up	52	2.3

Table 4: Descriptive statistics of responses to question on barriers (N = 70).

Problems and barriers	Yes	No	Total
Getting patients to alter lifestyle	59	11	70
Lack of time	40	30	70
Communications with secondary care	47	23	70
Patient non-compliance	52	18	70
Non-attendance of patients	61	9	70
Inadequate chiropody services	9	61	70
Inadequate ophthalmology services	57	13	70
Lack of access to hospital consultants	63	7	70
Absolute frequency of all barriers	388	172	

Percentage respondents on survey of health literacy

The focus here was on health literacy around diabetes in view of the concept of knowledge, attitude and practice.

Result shows that most of the respondents know the types of diabetes, but less about the signs and symptoms (Figure 5). “Do you have knowledge about diabetes?” question of yielded 36/71 (49%) responses, indicating

lack of diabetes health literacy. Further analysis of responses to knowledge of itemized causes of the health conditions show that 70 of the respondents know about family history or genetics (Figure 6).

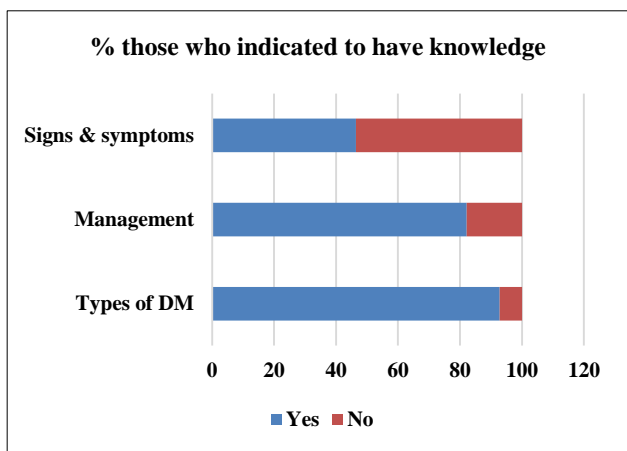


Figure 5: Percentage distribution of 'yes' respondents to the question on diabetes knowledge.

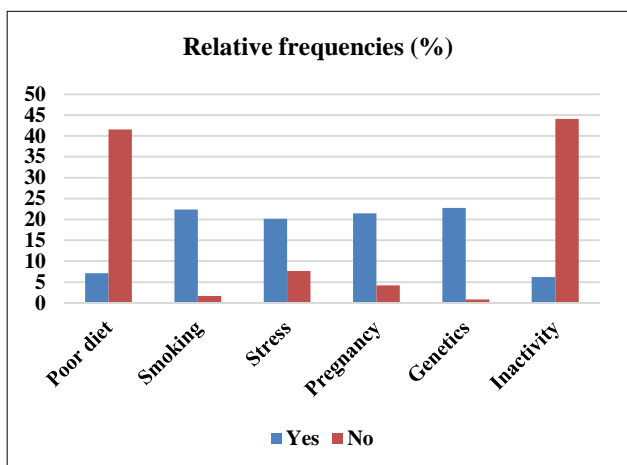


Figure 6: Relative frequencies of response on knowledge of causes of diabetes.

DISCUSSION

The pieces of the series are to present experiential note i.e. observation regarding initiation of diabetes registry program. The analysis that were performed for the first objective included levels of attendance, and DM diagnosis as well as checklist of services available/unavailable. The results show that most of the patients who were specifically invited to diabetes clinic for screening result confirmation did not attend. This observation highlights the issue of non-adherence to medical appointments by persons living with diabetes and the peoples' health seeking behaviour.¹²⁻¹⁷ It underscores the need for disease registry.¹⁸⁻²¹

Data of 42 individuals living with diabetes were entered into the pilot register being developed. On the second

objective, important services such as endocrinologist consultation are unavailable to the diabetes patients. While eye or foot examinations are available on locum arrangement, most respondents do not see this as barrier. While this observation affirms disparity in diabetes care services i.e. comparing rural communities with metropolitan cities, it is noteworthy that barriers to standard care implicate both patients and HCPs.²²⁻²⁴

In the third main objective, analysis emphasized non-attendance by invitees and the reasons for non-attendance. The results accentuate the previous report that while many of the healthcare professionals are interested in running diabetes clinic and register and access to diabetes foot care is the least of their problems, the lack of hospital consultants is the greatest 'health system' barrier faced by the patients. This observation further affirms barriers to standard care as including both patients and HCP factors.

CONCLUSION

Based on this pilot experience, it is recommendable that individuals living with diabetes should be educated on the need for adherence to medical check-up appointments. Also, the healthcare will benefit from further professional development regarding the importance of diabetes register in the management of patients.

ACKNOWLEDGEMENTS

This is part of the project "development of diabetes register in low-mid income country", which was done under the aegis of ethical approval granted to global medical research and development organization (GMRDO) in collaboration with public and community health department, Novena University. Favour Jato, Mercy Ugorji, Sonia Ibem and Valentine Ejiofor participated in this work as part of their academic research works. The various degrees of support of staff at the laboratory and medical records departments as well as management of Catholic hospital Abbi, which has been the GMRDO's primary research site, are highly appreciated.

Funding: No funding sources

Conflict of interest: None declared

Ethical approval: Ethical approvals for this project included Novena University and Ndokwa West local government both in Delta

REFERENCES

- Oguoma VM, Nwose EU, Bwititi PT. Cardiovascular disease risk prevention: preliminary survey of baseline knowledge, attitude and practices of a Nigerian rural community. *North Am J Med Sci*. 2014;6:466-71.
- Gabbay RA, Khan L, Peterson KL. Critical features for a successful implementation of a diabetes registry. *Diabetes Technol Ther*. 2005;7:958-67.

3. Khan L, Mincemoyer S, Gabbay RA. Diabetes registries: where we are and where are we headed? *Diabetes Technol Ther*. 2009;11(4):255-62.
4. Profili F, Bellini I, Zuppiroli A, Seghieri G, Barbone F, Francesconi P. Changes in diabetes care introduced by a chronic care model-based programme in Tuscany: a 4-year cohort study. *The Eur J Public Health*. 2016;27(1):14-9.
5. Stollefson M, Dipnarine K and Stopka C. The chronic care model and diabetes management in US primary care settings: a systematic review. *Prevent Chron Dis*. 2013;10:26.
6. Bongaerts BW, Mussig K, Wens J. Effectiveness of chronic care models for the management of type 2 diabetes mellitus in Europe: a systematic review and meta-analysis. *BMJ Open*. 2017;7:e013076.
7. O'Mullane M, McHugh S, Bradley CP. Informing the development of a national diabetes register in Ireland: a literature review of the impact of patient registration on diabetes care. *Inform Prim Care* 2010;18:157-68.
8. Mc Hugh S, O'Keeffe J, Fitzpatrick A. Diabetes care in Ireland: a survey of general practitioners. *Prim Care Diabetes*. 2009;3:225-31.
9. Ogbera AO, Ekpebegh C. Diabetes mellitus in Nigeria: The past, present and future. *World J Diabetes*. 2014;5:905-11.
10. Kenny CJ, Pierce M, McGerty S. A survey of diabetes care in general practice in Northern Ireland. *Ulster Med J*. 2002;71:10-6.
11. Pierce M, Agarwal G, Ridout D. A survey of diabetes care in general practice in England and Wales. *Br J Gen Pract*. 2000;50:542-5.
12. Eades Cm Alexander H. A mixed-methods exploration of non-attendance at diabetes appointments using peer researchers. *Health Expectations*. 2019: 1-12.
13. Frost L, Jenkins LS, Emmink B. Improving access to health care in a rural regional hospital in South Africa: Why do patients miss their appointments? *Afr J Prim Health Care Fam Med*. 2017;9:1-5.
14. Kaplan-Lewis E, Percac-Lima S. No-show to primary care appointments: why patients do not come. *J Prim Care Community Health*. 2013;4:251-5.
15. Otovwe A, Oyewole EO, Okandeji-Barry RO. Health seeking behaviour among patients with type-2 diabetes mellitus in Warri, Delta Sate, Nigeria. *J Agric Bio App Sci*. 2015;4:161-71.
16. Oyewole EO, Otovwe A. Patterns of adherence to management among patients with type 2 diabetes mellitus in South-South Region of Nigeria. *J Soc Health Diabetes*. 2015;3:115-9.
17. Otovwe A, Baba A. Knowledge of referral and feedback system among health workers in Billiri Local Government Area of Gombe State, Nigeria. *Eu J Pharma Med Res*. 2016;3:111-5.
18. Cook JA. Using a diabetes register to improve care and outcomes. collaborative support programs of New Jersey wellness symposium: diabetes prevention and wellness self-management. Edison, NJ; 2012.
19. Australian Institute of Health and Welfare. The national (insulin-treated) diabetes register 2013; Quality statement. Available at: <http://meteor.aihw.gov.au/content/index.phtml/itemId/608449>. Accessed on 24 August 2017.
20. Engström SM, Leksell J, Johansson UB. What is important for you? A qualitative interview study of living with diabetes and experiences of diabetes care to establish a basis for a tailored patient-reported outcome measure for the Swedish National Diabetes Register. *BMJ Open*. 2016;6:e010249.
21. Health Service Executive. Setting up a diabetes register using GP practice management system, 2017. Available at: <https://www.hse.ie/eng/health/hl/living/diabetes/Diabetesregister.html>. Accessed on 24 August 2017.
22. Valenzuela JM, Seid M, Waitzfelder B, Anderson AM, Beavers DP, Dabelea DM, et al. Prevalence of and disparities in barriers to care experienced by youth with type 1 diabetes. *J Pediatr*. 2014;164(6):1369-75.
23. Ahola AJ, Groop PH. Barriers to self-management of diabetes. *Diabet Med*. 2013;30:413-20.
24. Nwose EU, Mogbusiaghan M, Bwititi PT, Adoh G, Agofure O, Igumbor EO. Barriers in determining prevalence of type 2 diabetes mellitus among postpartum GDM: The research and retraining needs of healthcare professionals. *Diabetes Metab Syndr Obes*. 2019;13:2533-9.

Cite this article as: Igumbor EO, Agofure O, Onyimi C, Bwititi PT, Nwose EU. Diabetes registry initiative in Delta State Nigeria: narrative of the kick-off experience. *Int J Community Med Public Health* 2020;7:48-53.