

Appendix B – FIWOS System Installation Procedure, Source Codes and User Manual

1. Back-End Application Installation

Follow the steps to install the application open setup.msi:



If you use default settings of the system, create a folder called “fiwos” in C: drive and copy the database called “Fiwos.mdb” into that folder.

If the database is in different location

You must set the database path of the application. Go to the folder, where the application is stored. (By default path will be C:\Program Files\SystemProject\Fiwos\)

Open the Fountain.exe config file using Notepad application and set the data source path to new database location.

```
<add key="DataSource" value="Provider=Microsoft.Jet.OLEDB.4.0;
DataSource=c:\\fiwos\\Fiwos.mdb" />
```

And save the Fountaion.exe config file and run the program.

Default Login settings:

Username: admin

Password: password

Make sure to change the password for the admin user. Username 'admin' will not be deleted. The data in the database are only for testing purposes. Make sure to add new data to tables according to your menu.

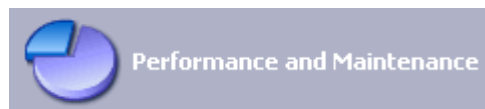
2. Web Server Installation in Windows XP Pro

If you are running Windows XP Professional on your computer you can install Microsoft's web server, Internet Information Server 5.1 (IIS) for free from the Windows XP Pro installation CD and configure it to run on your system

1. Place the Windows XP Professional CD-ROM into your CD-ROM Drive.
2. Open '*Add/Remove Windows Components*' found in '*Add/Remove Programs*' in the '*Control Panel*'.
3. Place a tick in the check box for '*Internet Information Services (IIS)*' leaving all the default installation settings intact.
4. Once IIS is installed on your machine you can view your home page in a web browser by typing '*http://localhost*' (you can substitute '*localhost*' for the name of your computer) into the address bar of your web browser. If you have not placed your web site into the default directory you should now be looking at the IIS documentation.
5. If you are not sure of the name of your computer right-click on the '*My Computer*' icon on your desktop, select '*Properties*' from the shortcut menu, and click on the '*Computer Name*' tab.

6. Your default web directory to place your web site in is 'C:\Inetpub\wwwroot', but if you don't want to over write the IIS documentation found in this directory you can set up your own virtual directory through the 'Internet Information Services' console.

7. The 'Internet Information Services' console can be found in the 'Administrative Tools' in the 'Control Panel' under 'Performance and Maintenance', if you do not have the control panel in Classic View.

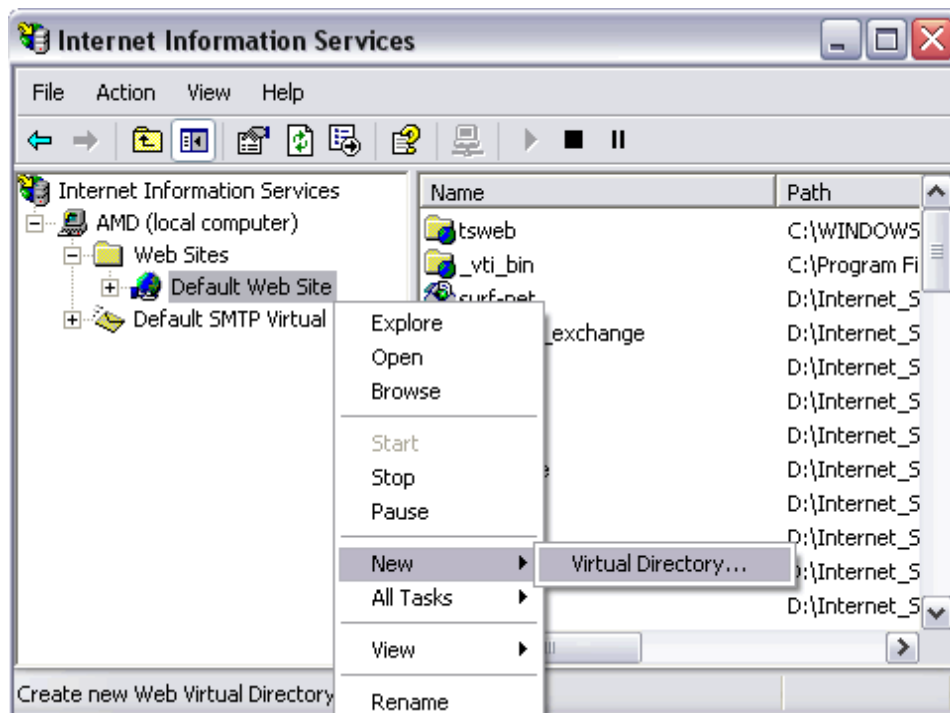


8. Double-click on the 'Internet Information Services' icon.



Once the 'Internet Information Services' console is open you will see any IIS web services you have running on your machine including the SMTP server and FTP server, if you chose to install them with IIS.

To add a new virtual directory right click on 'Default Web Site' and select 'New', followed by 'Virtual Directory', from the drop down list.



Next you will see the ‘*Virtual Directory Creation Wizard*’ from the first screen click the ‘*next*’ button.

9. You will then be asked to type in an ‘*Alias*’ by which you will access the virtual directory from your web browser (this is the name you will type into your web browser after ‘*localhost*’ to view any web pages you place in the directory).

10. Next you will see a ‘*Browse...*’ button, click on this to select the directory your web site pages are in on your computer, after which click on the ‘*next*’ button to continue.

11. On the final part of the wizard you will see a series of boxes, if you are not worried about security then select them all, if you are and want to run ASP scripts then check the first two, followed by the ‘*next*’ button.

12. Once the virtual directory is created you can view the web pages in the folder by typing ‘*http://localhost/aliasName*’ (where ‘*aliasName*’ is, place the alias you called the virtual directory) into the address bar of your web browser (you can substitute ‘*localhost*’ for the name of your computer if you wish).

3. Configuration of Wireless Access Point 1200 to Default Settings

Using the Mode Button:

If you need to start over during the initial setup process, follow these steps to reset the access point to factory default settings using the access point MODE button.

Step 1 Disconnect power (the power jack for external power or the Ethernet cable for in-line power) from the access point.

Step 2 Press and hold the MODE button while you reconnect power to the access (2 to 3 seconds), and release the button. All access point settings return to factory defaults.

Using a Web-browser:

Note: Basic configuration on Wireless Access Point.

Wireless Access Point Name - BOXHILL

IP Address – 10.0.0.5

Subnetmask – 255.255.255.0

MAC Address – 0005.9a38.42c0

Default Gateway – 10.0.0.1

Step 1 Open your Internet browser.

Step 2 Enter the access point's IP address in the browser address line and press Enter. An Enter Network Password window appears.

Step 3 Enter your username in the User Name field. The default username is Cisco.

Step 4 Enter the access point password in the Password field and press Enter. The default password is Cisco. The Summary Status page appears.

Step 5 Click System Software and the System Software screen appear.

Step 6 Click System Configuration and the System Configuration screen appear.

Step 7 Click the Reset to Defaults button.

The screenshot shows the Cisco 1200 Access Point web interface. The main content area is titled "Cisco 1200 Access Point" and "Home: Summary Status". The hostname is "BOXHILL". The page is divided into several sections:

- Association:** Clients: 0, Repeaters: 0
- Network Identity:** IP Address: 10.0.0.5, MAC Address: 0005.9a38.42c0
- Network Interfaces:** A table listing interfaces with their MAC addresses and transmission rates.

Interface	MAC Address	Transmission Rate
FastEthernet	0005.9a38.42c0	100Mb/s
Radio-C-802.11B	0001.8445.b9e6	11.0Mb/s
Radio1-802.11A	0005.9a38.2451	54.0Mb/s
- Event Log:** A table showing system events with columns for Time, Severity, and Description.

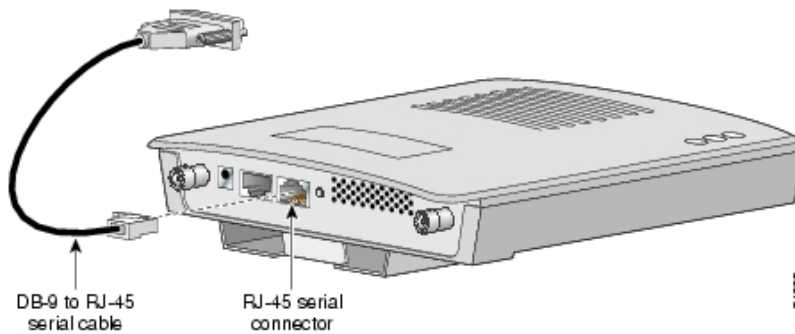
Time	Severity	Description
Mar 1 00:00:58.231	Notification	Line protocol on Interface Dot11Radio0, changed state to up
Mar 1 00:00:57.250	Error	Interface Dot11Radio0, changed state to up
Mar 1 00:00:57.231	Information	Interface Dot11Radio0, frequency 2447 selected
Mar 1 00:00:57.231	Information	Interface Dot11Radio0, frequency 2457 is in use
Mar 1 00:00:57.231	Information	Interface Dot11Radio0, frequency 2437 is in use
Mar 1 00:00:57.231	Information	Interface Dot11Radio0, frequency 2427 is in use
Mar 1 00:00:57.230	Information	Interface Dot11Radio0, frequency 2422 is in use
Mar 1 00:00:57.230	Information	Interface Dot11Radio0, frequency 2417 is in use
Mar 1 00:00:57.230	Information	Interface Dot11Radio0, frequency 2412 is in use
Mar 1 00:00:55.232	Notification	Line protocol on Interface Dot11Radio0, changed state to up

A "Refresh" button is located at the bottom right of the interface.

Default IP Address:

Step 1 Connect a nine-pin, female DB-9 to RJ-45 serial cable to the RJ-45 serial port on the access point and to the COM port on a computer.

Connecting the Serial Cable



Step 2 Set up a terminal emulator to communicate with the access point. Use the following settings for the terminal emulator connection: 9600 baud, 8 data bits, no parity, 1 stop bit, and no flow control.

Assigning Basic Settings:

Step 1 Open your Internet browser.

Step 2 Enter the access point's IP address in the browser address line and press Enter. An Enter Network Password screen appears.

Step 3 Press Tab to bypass the Username field and advance to the Password field.

Step 4 Enter the case-sensitive password *Cisco* and press Enter. The Summary Status page appears.

Step 5 Click Express Setup. The Express Setup screen appears.

Cisco 1200 Access Point

Hostname: B0XHILL

HOME
EXPRESS SET-UP
EXPRESS SECURITY
NETWORK MAP
ASSOCIATION
NETWORK INTERFACES
SECURITY
SERVICES
WIRELESS SERVICES
SYSTEM SOFTWARE
EVENT LOG

Home: Summary Status

Association

Clients: 0 Repeaters: 0

Network Identity

IP Address: 10.0.0.5
MAC Address: 0005.9a38.42c0

Network Interfaces

Interface	MAC Address	Transmission Rate
FastEthernet	0005.9a38.42c0	100Mb/s
Radio0-802.11B	0001.6445.b9e8	11.0Mb/s
Radio1-802.11A	0005.9a38.2451	54.0Mb/s

Event Log

Time	Severity	Description
Mar 1 00:00:58.231	◆ Notification	Line protocol on Interface Dot11Radio0, changed state to up
Mar 1 00:00:57.250	● Error	Interface Dot11Radio0, changed state to up
Mar 1 00:00:57.231	◆ Information	Interface Dot11Radio0, frequency 2447 selected
Mar 1 00:00:57.231	◆ Information	Interface Dot11Radio0, frequency 2457 is in use
Mar 1 00:00:57.231	◆ Information	Interface Dot11Radio0, frequency 2437 is in use
Mar 1 00:00:57.231	◆ Information	Interface Dot11Radio0, frequency 2427 is in use
Mar 1 00:00:57.230	◆ Information	Interface Dot11Radio0, frequency 2422 is in use
Mar 1 00:00:57.230	◆ Information	Interface Dot11Radio0, frequency 2417 is in use
Mar 1 00:00:57.230	◆ Information	Interface Dot11Radio0, frequency 2412 is in use
Mar 1 00:00:55.232	◆ Notification	Line protocol on Interface Dot11Radio1, changed state to up

Refresh

Close Window _____ Copyright (c) 1992-2004 by Cisco Systems,

Hostname: B0XHILL

HOME
EXPRESS SET-UP
EXPRESS SECURITY
NETWORK MAP
ASSOCIATION
NETWORK INTERFACES
SECURITY
SERVICES
WIRELESS SERVICES
SYSTEM SOFTWARE
EVENT LOG

Express Set-Up

Host Name: B0XHILL
MAC Address: 0005.9a38.42c0

Configuration Server Protocol: DHCP Static IP

IP Address: 10.0.0.5
IP Subnet Mask: 255.255.255.0
Default Gateway: 10.0.0.1

SNMP Community: defaultCommunity
 Read-Only Read-Write

Radio0-802.11G

Role in Radio Network: Access Point Repeater
 Root Bridge Non-Root Bridge
 Workgroup Bridge Scanner

Optimize Radio Network for: Throughput Range Default Custom

Aironet Extensions: Enable Disable

Radio1-802.11A

Role in Radio Network: Access Point Repeater
 Root Bridge Non-Root Bridge
 Workgroup Bridge Scanner

Optimize Radio Network for: Throughput Range Default Custom

Aironet Extensions: Enable Disable

Step 6 Enter the configuration settings you obtained from your system administrator.

The configurable settings include:

- System Name – The system name, while not an essential setting, helps identify the access point on your network. The system name appears in the titles of the management system pages.
- Configuration Server Protocol – Click on the button that matches the network’s method of IP address assignment.
 - DHCP – IP addresses are automatically assigned by your network’s DHCP server.
 - Static IP – The access point uses a static IP address that you enter in the IP address field.
- IP Address – Use this setting to assign or change the access point’s IP address. If DHCP is enabled for your network, leave this field blank.
- IP Subnet Mask – Enter the IP subnet mask provided by your network administrator so the IP address can be recognised on the LAN. If DHCP is enabled, leave this field blank.
- Default Gateway – Enter the default gateway IP address provided by your network administrator. If DHCP is enabled, leave this field blank.
- Radio Service Set ID (SSID) – Enter the case-sensitive SSID (32 alphanumeric characters maximum) provided by your network administrator. The SSID is a unique identifier that client devices use to associate with the access point.
- Broadcast SSID in Beacon – Use this setting to allow devices that do not specify an SSID to associate with the access point.
 - Yes – This is the default setting; it allows devices that do not specify an SSID to associate with the access point.
 - No – Devices must specify an SSID to associate with the access point. With No selected, the SSID used by the client devices must match exactly the access point’s SSID.
- Role in Radio Network – Click the box (for each radio interface) that describes the role of the access point on your network.
 - Access Point – (Default) click this box if the unit (also called *root access point*) is connected to a wired LAN.
 - Repeater – Click this box if the unit (also called *repeater non-root*) is not connected to the wired LAN and supports wireless clients.

- Root Bridge – Specifies that the unit is operating as a root bridge and connects directly to the main Ethernet LAN network. In this mode, the unit accepts an association from another Cisco Aironet non-root bridge.
- Non-root Bridge – Specifies that the unit is operating as a non-root bridge and connects to a remote LAN network and must associate with a Cisco Aironet root bridge using the wireless interface.
- Workgroup Bridge – Check this box if your unit (workgroup bridge) is not connected to the wired LAN and supports wired clients.
- Scanner – This setting is enabled when your product is being used by the Cisco WLSE to monitor wireless data traffic.
- Optimize Radio Network – Use this setting (for each radio interface) to select either preconfigured settings for the access point radio or customised settings for the access point radio.
 - Throughput – Maximises the data volume handled by the access point but might reduce its range.
 - Range – Maximises the access point’s range but might reduce throughput.
 - Custom – The access point uses settings you enter on the Network Interfaces: Radio-802.11b Settings page. Clicking Custom takes you to the Network Interfaces: Radio-802.11b Settings page.
- Aironet Extensions – Enable this setting (for each radio interface) if there are only Cisco Aironet devices on your wireless LAN or the unit is configured in repeater mode.

Step 7 Click Apply to save your settings. If you have changed the IP address, you will lose your connection to the access point. Browse to the new IP address to reconnect to the access point. Your access point is now running but probably requires additional configuring to conform to your networks operational and security requirements. Consult the sections in this appendix for the information you need to complete the configuration.

Enabling the Radio Interfaces:

Step 1 Use your internet browser to access your access point.

Step 2 When the Summary Status page displays, click Network Interfaces > Radio0-802.11b or Network Interfaces > Radio0-802.11g and the radio status page displays.

Step 3 Click Settings and the radio settings page displays.

Step 4 Click Enable in the Enable Radio field.

Step 5 Click Apply.

Step 6 Click Radio1-802.11A and the radio status page displays.

Step 7 Repeat Steps 3 to 5.

Step 8 Close your internet browser.

The screenshot shows the 'Express Security Set-Up' page for a device named 'BOXHILL'. The 'SSID Configuration' section is active, showing the following settings:

- 1. SSID: F1W0S (with a checked 'Broadcast SSID in Beacon' option)
- 2. VLAN: No VLAN (selected), with options for 'Enable VLAN ID: (1-4095)' and 'Native VLAN'.
- 3. Security: No Security (selected), with options for 'Static WEP Key' (with a 'Key 1' dropdown and '128 bit' dropdown), 'EAP Authentication' (with 'RADIUS Server' and 'RADIUS Server Secret' fields), and 'WPA' (with 'RADIUS Server' and 'RADIUS Server Secret' fields).

At the bottom, there is an 'SSID Table' with the following data:

Delete	SSID	VLAN	Encryption	Authentication	Key Management	Native VLAN	Broadcast SSID
<input type="checkbox"/>	F1W0S	none	none	open	none		<input checked="" type="checkbox"/>

Using the Express Security Page:

Note: SSID has to have name of F1W0S which should be matching with PDA in our case. Also, we are going to use security such as WPA, and not WEP Key. Wi-Fi Protected Access (WPA) is a data encryption specification for 802.11 wireless networks

that replaces the weaker WEP. Created by the Wi-Fi Alliance before an 802.11i security standard was ratified by the IEEE, it improves on WEP by using dynamic keys, Extensible Authentication Protocol to secure network access, and an encryption method called Temporal Key Integrity Protocol (TKIP) to secure data transmissions. WEP specifies a shared secret 40 or 64-bit key to encrypt and decrypt the data. With WEP, the receiving station must use the same key for decryption. Each radio NIC and access point, therefore, must be manually configured with the same key.

Step 1 Type the SSID in the SSID entry field. The SSID can contain up to 32 alphanumeric characters.

Step 2 To broadcast the SSID in the bridge beacon, check the Broadcast SSID in Beacon check box. When you broadcast the SSID, devices that do not specify an SSID can associate to the bridge. This is a useful option for an SSID used by guests or by client devices in a public space. If you do not broadcast the SSID, client devices cannot associate to the bridge unless their SSID matches this SSID. Only one SSID can be included in the bridge beacon.

Step 3 (Optional) Check the Enable VLAN ID check box and enter a VLAN number (1 through 4095) to assign the SSID to a VLAN. You cannot assign an SSID to an existing VLAN.

Step 4 (Optional) Check the Native VLAN check box to mark the VLAN as the native VLAN.

Step 5 Select the security setting for the SSID. The settings are listed in order of robustness, from No Security to WPA, which is the most secure setting.

If you select Static WEP Key, choose the key number and encryption key size and enter the encryption key (10 hexadecimal characters for 40-bit keys or 26 hexadecimal characters for 128-bit keys). If you select EAP Authentication or WPA, enter the IP address and shared secret for the authentication server on your network.

Step 6 Click Apply. The SSID appears in the SSID table at the bottom of the page.

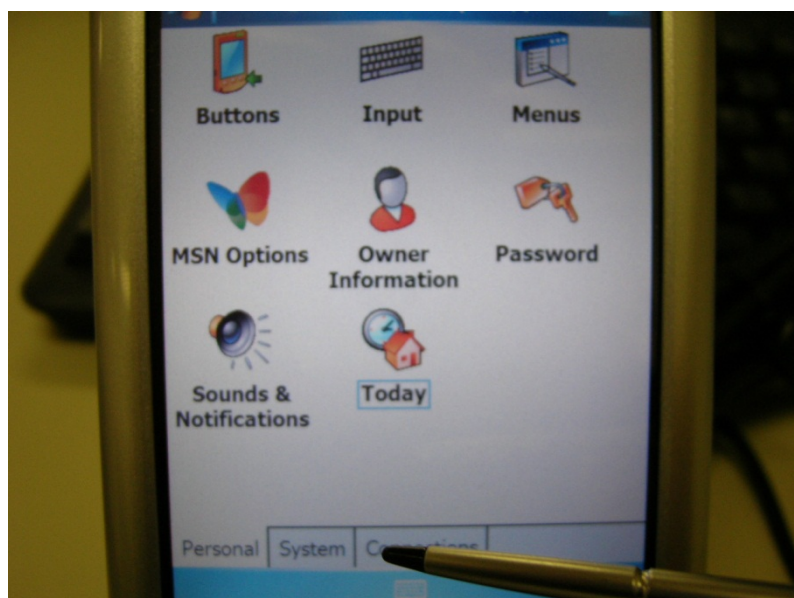
4. PDA Configuration for the Front-end

Step 1 – Switch on the PDA

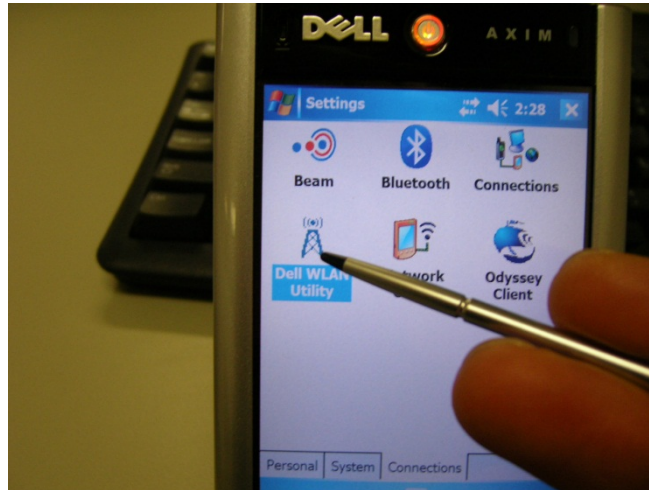
Step 2 – Go to the start and click to settings as shown below.



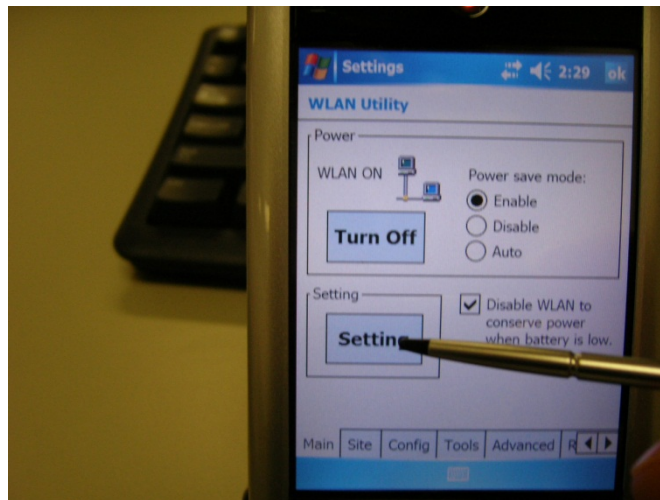
Step 3 – It shows 8 different functions and we need to click connections.



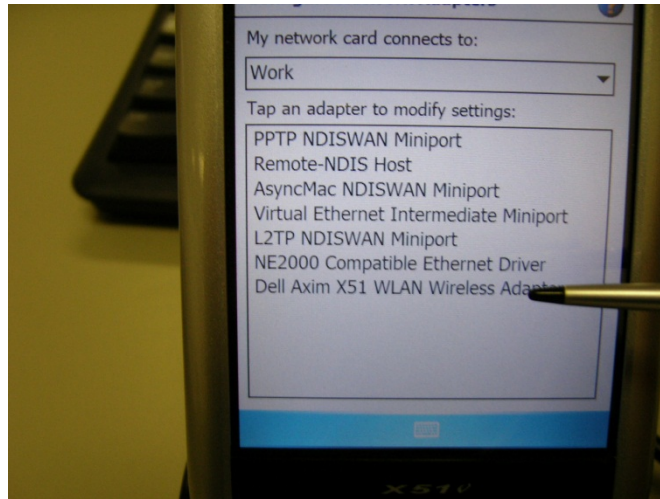
Step 4 – There is 6 different functions of connecting to wireless and we are going to use Dell WLAN Utility as shown below.



Step 5 – It shows that WLAN Utility there is two different boxes, Click on top one is using connect to enable mode to wireless mode. Now, go to the setting box and click on setting as shown below.



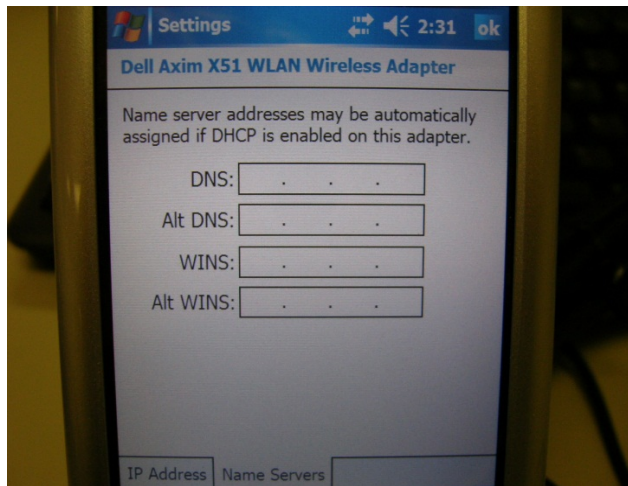
Step 6 – Choose the bottom item which is Dell Axim X51 WLAN Wireless Adapter and click that one.



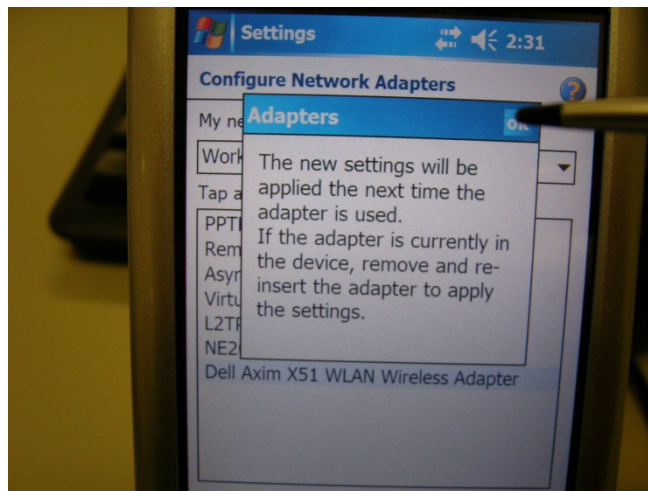
Step 7 – In Dell Axim X51 WLAN Wireless Adapter there are two radio boxes and we need to use the IP address (10.0.0.3) to connect to our web server and the Subnet mask of 255.255.255.0 as shown below.



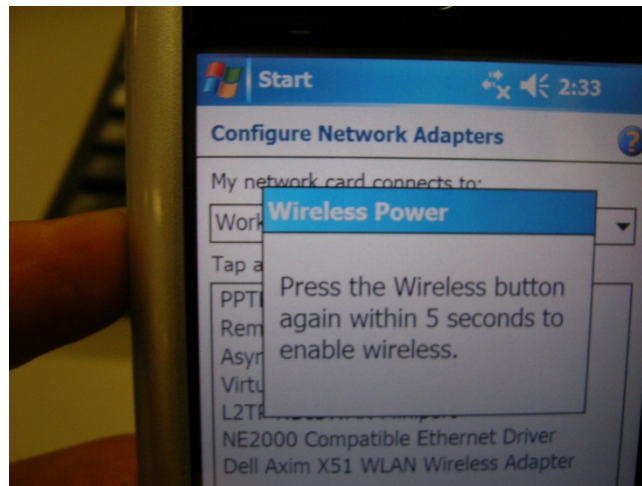
Step 8 – Don't use this part of the section.



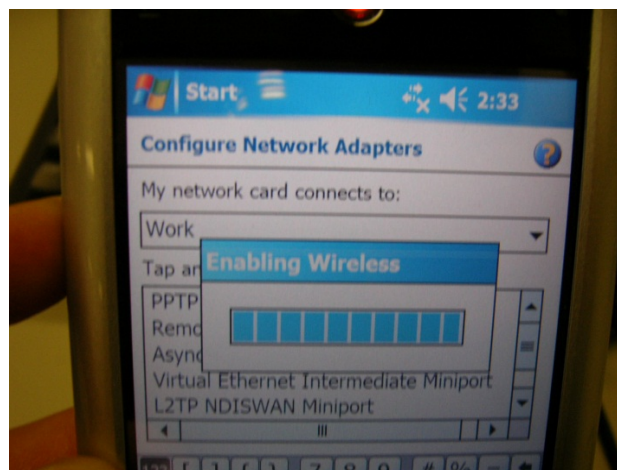
Step 9 – Once done the previous step, we need to click on the OK button.



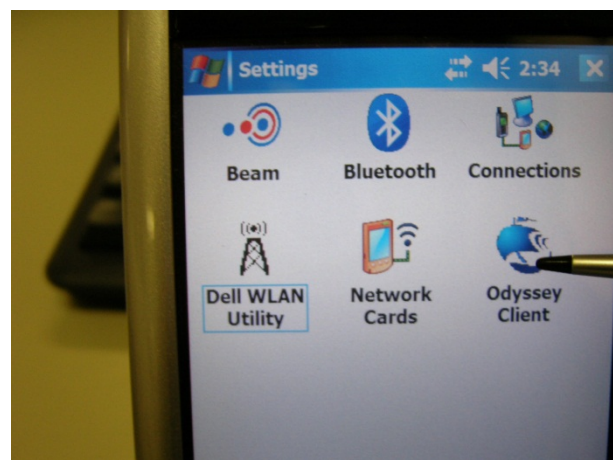
Step 10 – Apply this configuration by pushing the buttons which is located on the left side of corner.



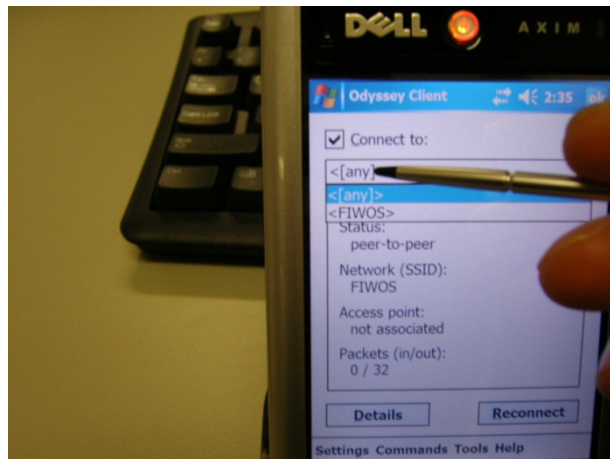
Step 11 – After the previous step the following screen should appear showing us that it's enabled the wireless.



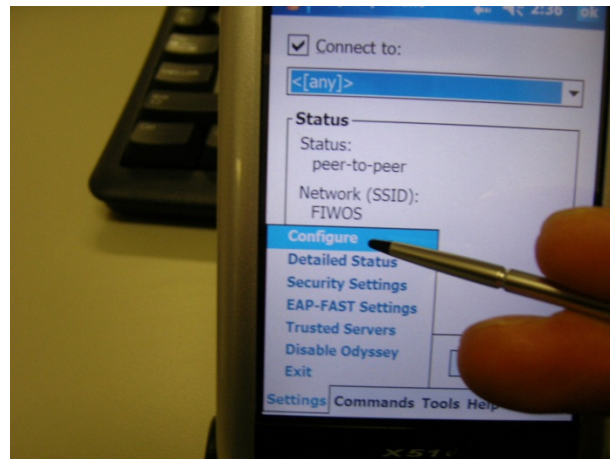
Step 12 – Go back to Step4 and click Odyssey Client as shown below.



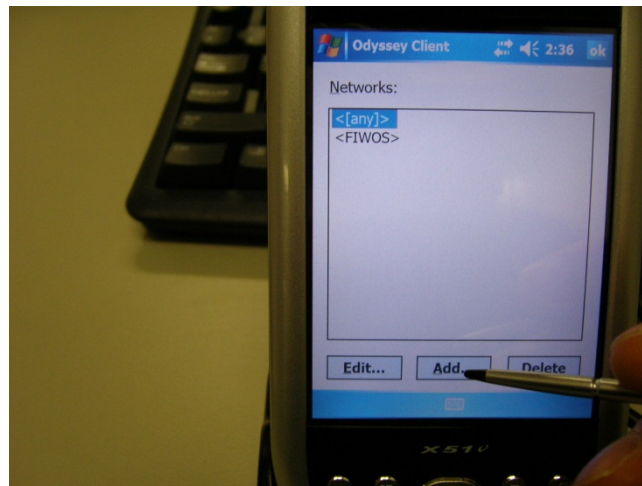
Step 13 – Tick the box and click any as shown below.



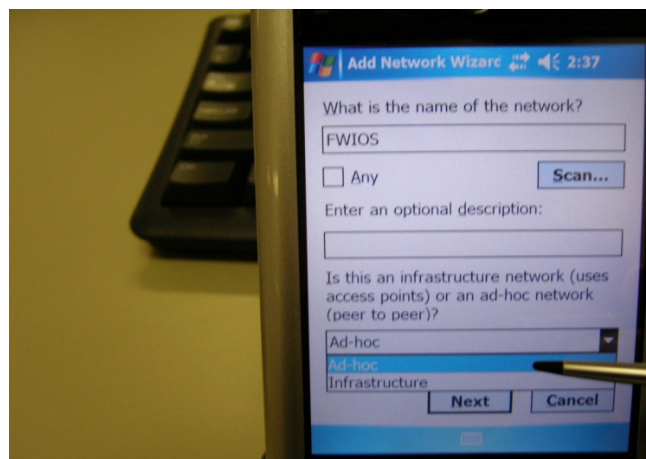
Step 14 – Have look at the bottom and click on settings. It comes up with couple of different functions chose configure shown below.



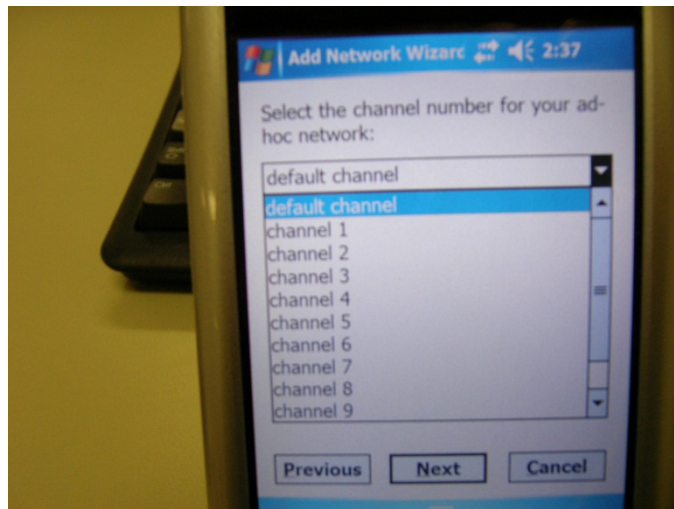
Step 15 – Now, we are able to create our name of project which is FIWOS, click the add button as shown below.



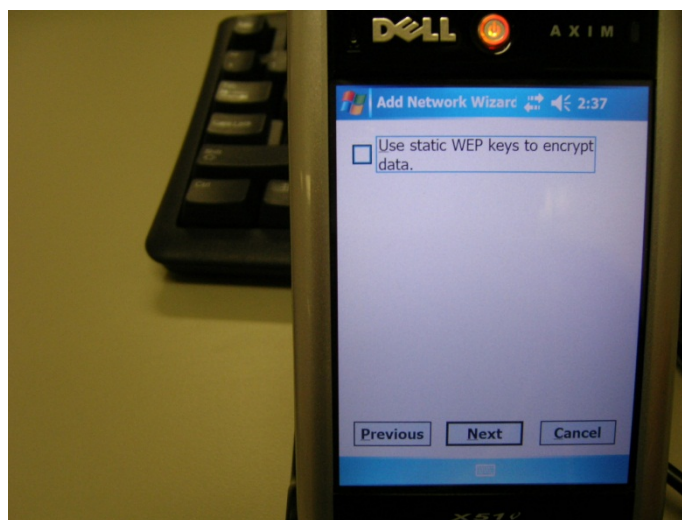
Step 16 – It shows that name of network and it asks which types of networks want to use. Now we are going to use Ad-hoc which is connected within local network infrastructure will be using internet.



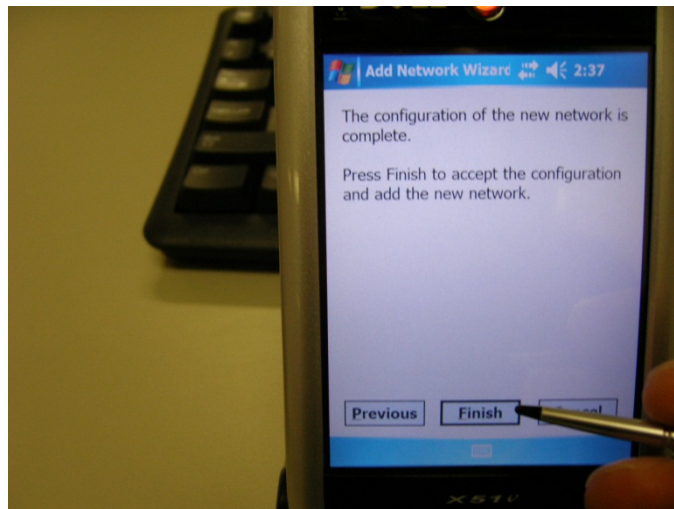
Step 17 – Now, we need to choose the channel which can make us connect to Ad-hoc. We use channel 3 at the moments.



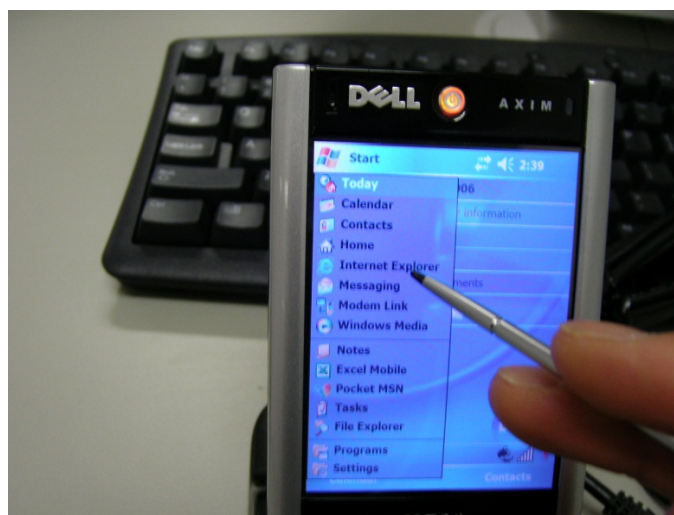
Step 18 – Next it will ask about WEP Keys which is making more secure through the data. But in our cases do not need to use it.



Step 19 – Once you done the above steps properly clicks the finish tab as shown below.



Step 20 – Check whether it is working or not by using internet explorer, click the internet explorer.



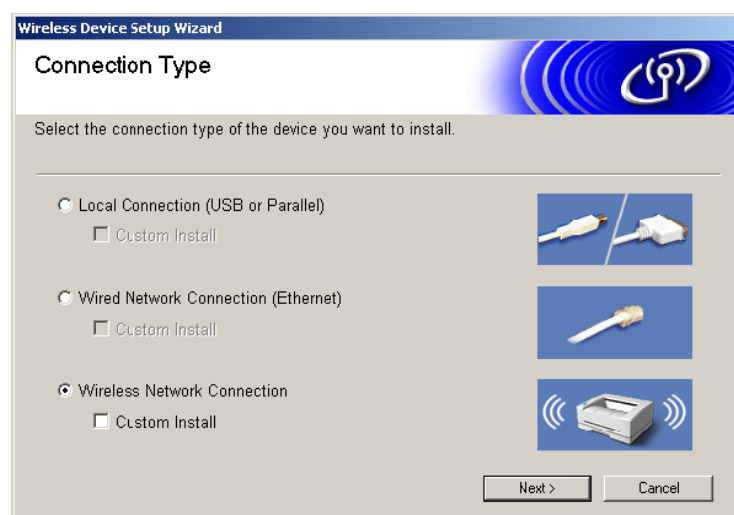
Step 21 – In the Internet Explorer type in the address <http://10.0.0.2/FIWOS/MainPage>. The screen should appear as shown above.

5. Setting a wireless Brother® printer

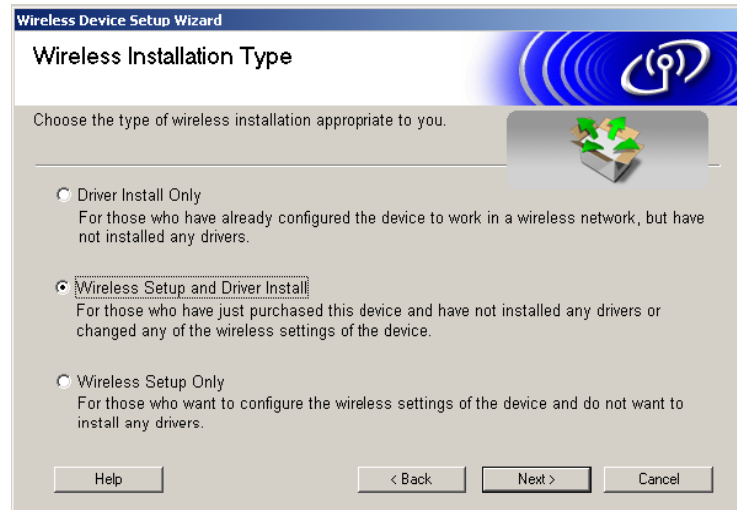
- 1 Turn on the machine by plugging in the power cord.
- 2 Turn on your computer.
- 3 Put the supplied CD-ROM into your CD-ROM drive. If the language screen appears, choose your language.
- 4 The CD-ROM main menu will appear. Click Install MFL-Pro Suite.



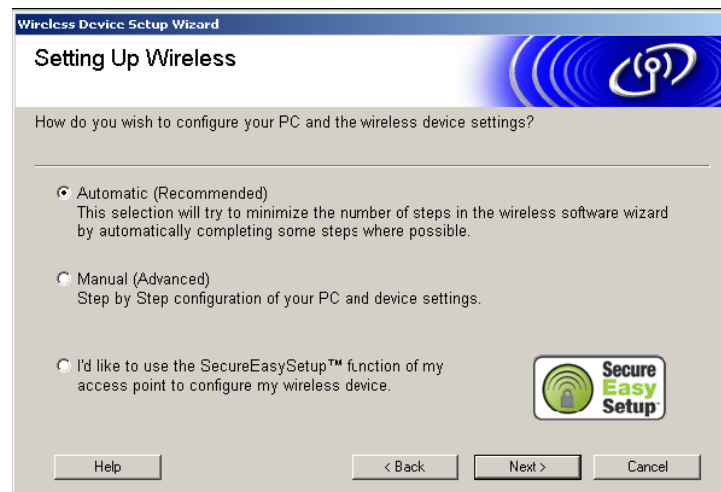
- 5 Choose Wireless Network Connection, and then click Next.



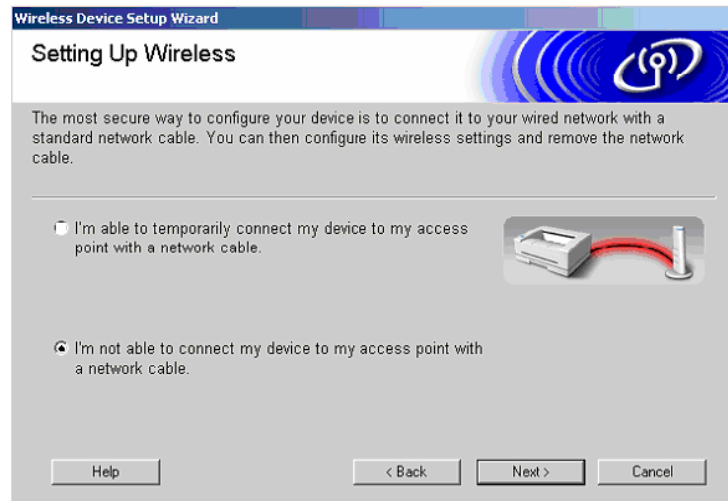
- 6 Choose Wireless Setup and Driver Install, and then click Next.



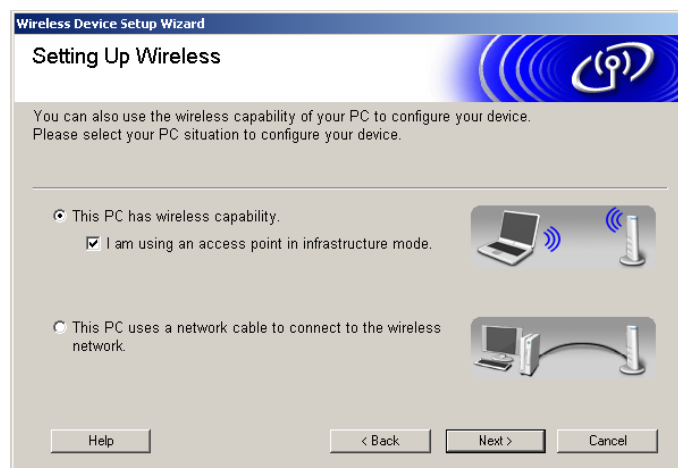
7 Choose Automatic (Recommended) and then click Next.



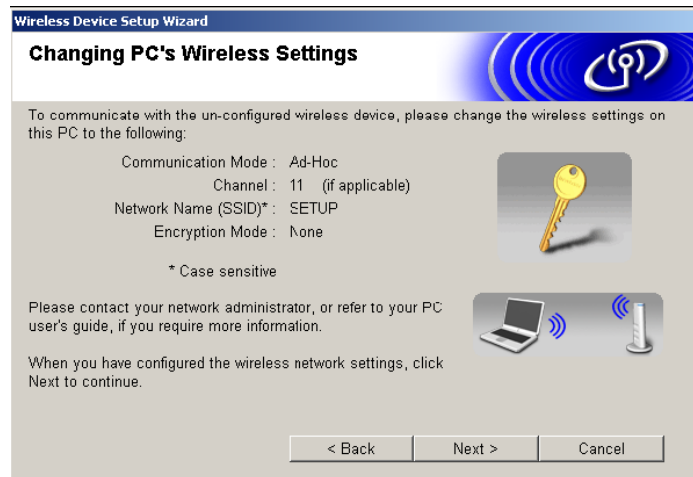
8 Click the bottom one.



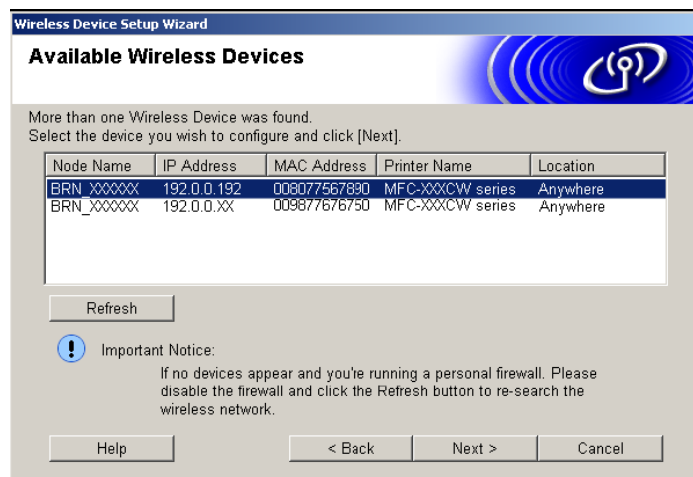
9 If you choose This PC has wireless capability, check I am using an access point in infrastructure mode, and then click Next.



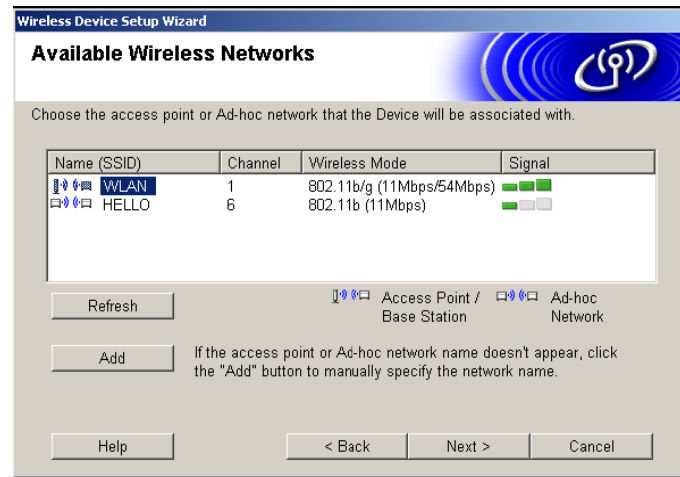
10 To communicate with the un-configured wireless machine, temporarily change the wireless settings on your PC to match machine's default settings shown on this screen. Click Next.



11 If more than one wireless machine is available on the network, the following list appears. If the list is blank, check if the access point and the machine are powered on, and then click Refresh. Choose the machine you wish to configure, and click Next.



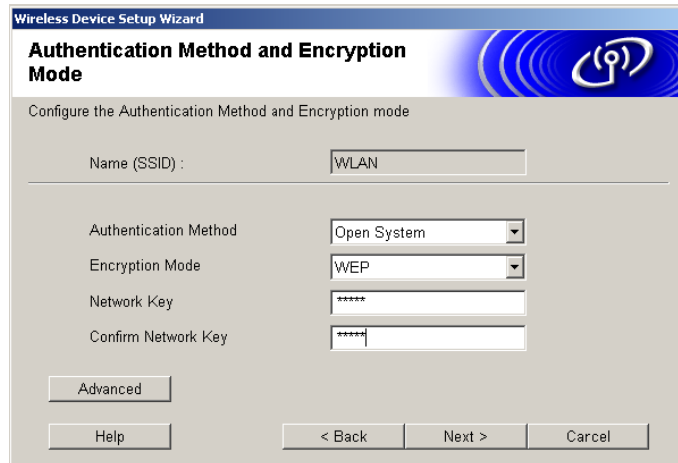
12 The wizard will search for wireless networks available from your machine. If more than one wireless network is available, the following list appears. Choose the access point you wish to associate the machine with, and then click Next.



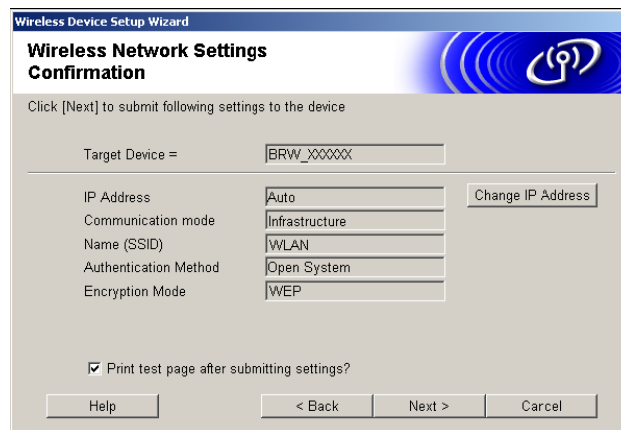
13 If your network is not configured for Authentication and Encryption, the following screen will appear. To continue installation, click OK and go to step 15.



14 If your network is configured for Authentication and Encryption, the following screen will appear. When configuring your Brother wireless machine, you must ensure that it is configured to match the Authentication and Encryption settings of your existing wireless network. Choose the Authentication Method and Encryption Mode from the pull-downs in each setting box. Then enter the Network key and click Next.

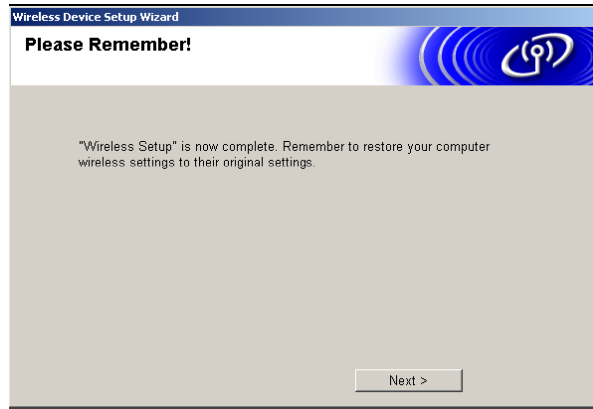


15 Click Next. The settings will be sent to your machine. The settings will remain unchanged if you click Cancel.

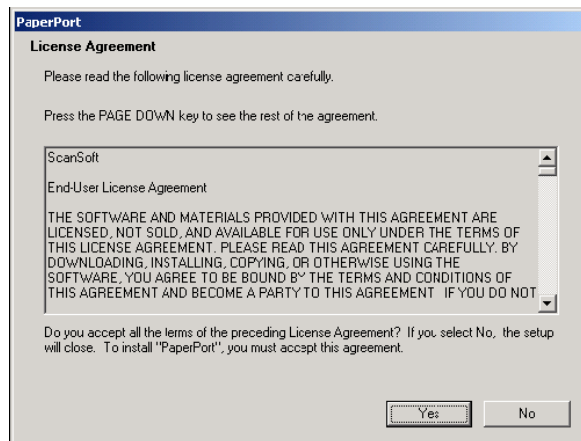


Note: In this case, do not need to setup for Authentication and Encryption. This procedure will show that how can we setup the Authentication and Encryption.

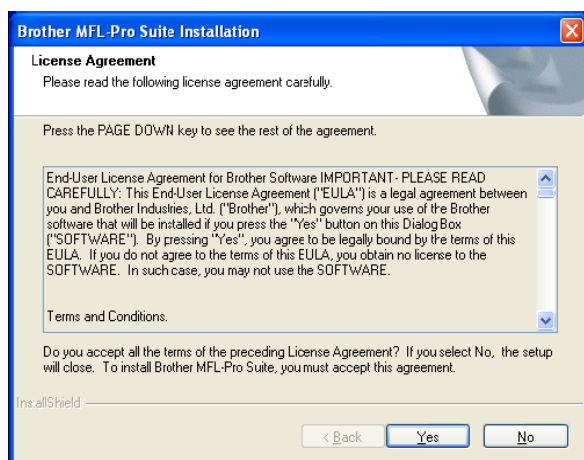
16 It show that wireless settings of your computer back to their original settings. Click Next.



17 The driver installation starts. After reading and accepting the ScanSoft® PaperPort® 9.0SE License Agreement, click Yes.

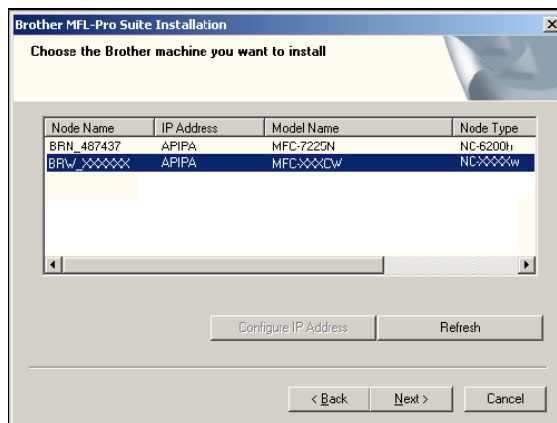


18 When the Brother MFL-Pro Suite Software License Agreement window appears, click Yes.



19 The installation of the Brother drivers will automatically start.

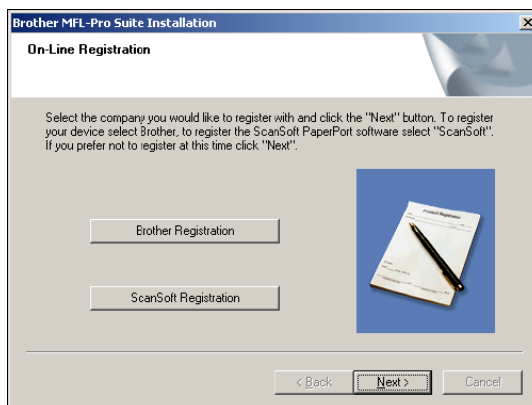
20 If the machine is configured for your network, choose the machine from the list, and then click Next.



21 If the machine is not yet configured for use on your network, the following screen appears. Click OK. The Configure IP Address windows will appear. Enter the proper IP address information for your network by following the on-screen instructions.



22 It shows that ScanSoft on-line Registration screen is displayed.



23 Click Finish to restart your computer.

6. PDA Ordering System

Table summary



- 1) This is the first page you will see when you logon to the ordering system.
- 2) This will display table status.
- 3) To start a new order, select a vacant table from the list and press “Create Order” button.
- 4) “Finish Order” button will close the order and print it to appropriate locations such as kitchen, Bar, Cashier.
- 5) To get the latest table statuses press “Refresh List” button.

Order summary



- 1) This is the main page for the current order which has started. You can add Meals, Drinks using “Add Meals” and “Add Drinks” buttons.
- 2) To clear the current order from the PDA memory press “Clear Order” button.
- 3) “Submit Order” button will send the current order to the printer.

Add Meals, Drinks

Entrees, Main Courses, Desserts and Drinks will display in different colours.

- 1) Press “Add” button to add that item. “Del” button will remove that item from the order as one item per time.
- 2) After selecting items press “Add to order” button to add them in to the order.

Add Drinks

Table: 4

Tea (Twinings)	0	Add	Del
Espresso Coffee	0	Add	Del
Crown Lager	0	Add	Del
Stella	0	Add	Del

Add to Order

Add Meals

Table: 4

Soup1	0	Add	Del
Salad	0	Add	Del
Pasta	0	Add	Del
Turkey	0	Add	Del
Lamb	0	Add	Del
Fish	0	Add	Del
Vegetarian	0	Add	Del
Fruit	0	Add	Del
Cake	0	Add	Del
Chocolate	0	Add	Del
Cheese	0	Add	Del

Add to Order

Order Summary

Table: 4

Pasta	1	Edit	Del
Fish	1	Edit	Del
Chocolate	1	Edit	Del

Total: \$15.00

Add Meals
Add Drinks
Clear Order

Submit Order

This is an example of an order. Entrees, Main courses, Desserts and Drinks will display in different colours. (In this case, there is no drink being ordered). Also total cost for this order will be for display purposes only. Once you pressed “Submit Order” button, copy of the order will send to the printer in the kitchen, bar and to the cashier.

7. User Manual for the Back-end Application

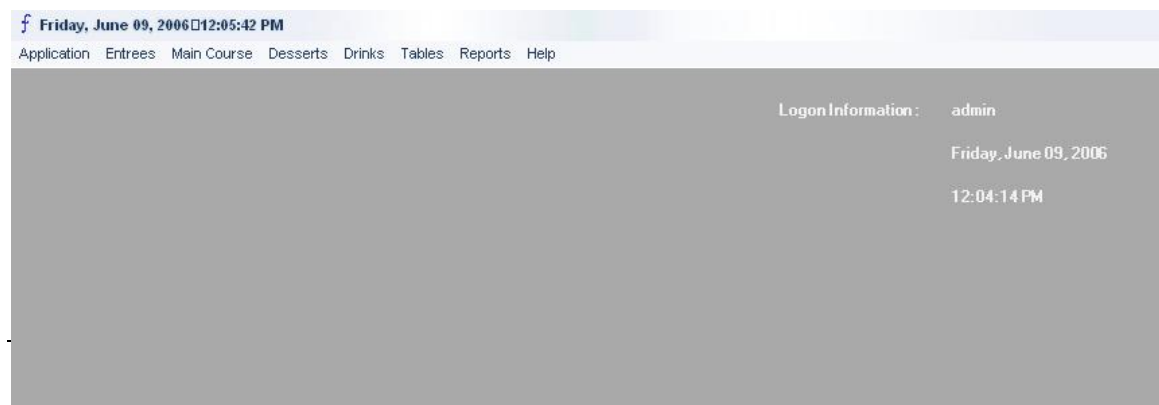
Logon Menu

Enter a valid username and password. Then press “login” button. There is no limit in attempts.



Main window

Once you login to the system, this will be you main screen. All tasks which perform by this software will display on the menu. Also user information such as user name, logged time and date will display on the top right hand corner or on the status bar.



Applications

This will display the links to Exit from the system, Logout, Change password.



Exit:

To exit from the system, press “Exit”. It will shut down this software and direct you to the desktop.

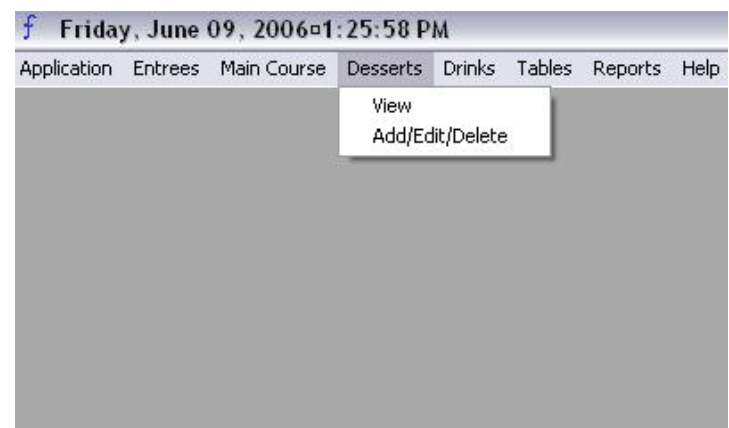
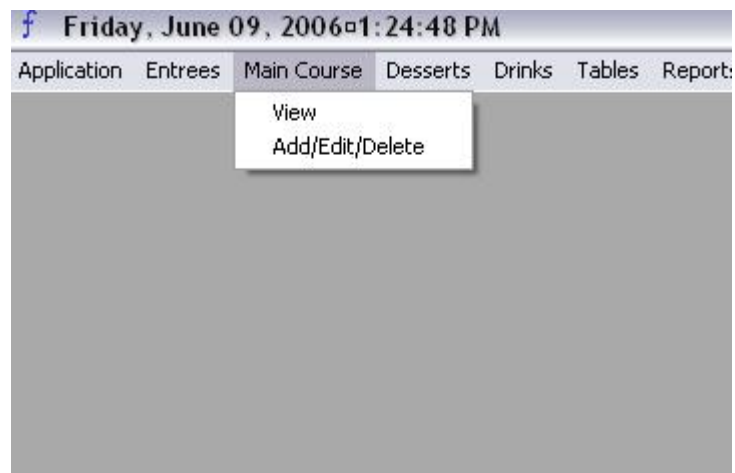
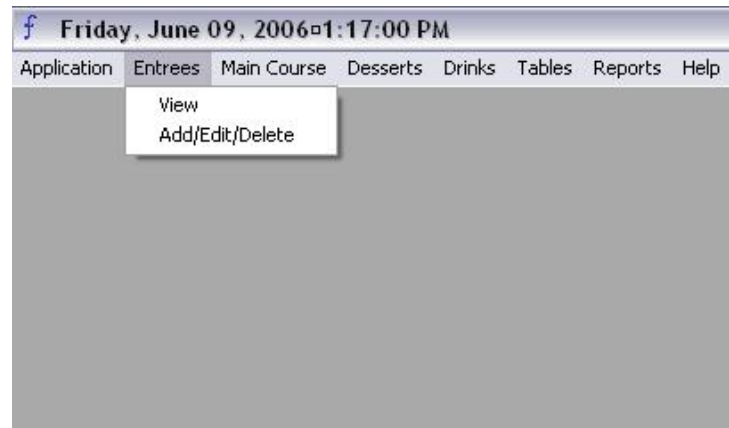
Logout:

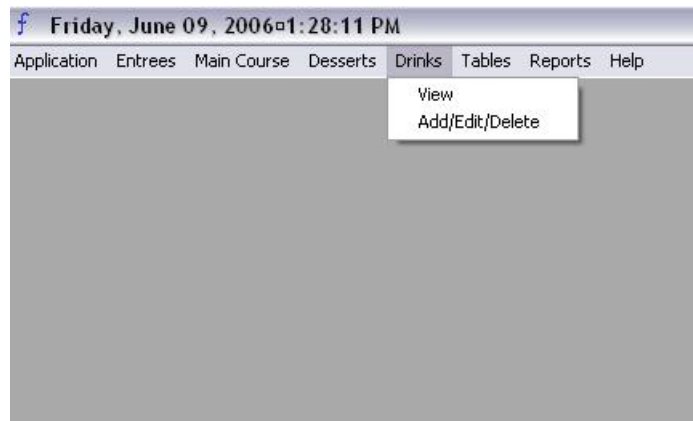
You can leave this software opened while you are not attended. Press “Logout”. It will bring the login screen. Enter a valid username and password to login to this system. This software has the ability to login by using different usernames. Make sure all windows are closed except main window before logout.

Change Password:

This feature will use to changes the password of a user or create a new user account and password. To change the password, enter the username and new password (**Note:** This system will not ask for confirm password. So make sure you have typed the password correct.) .Then press “Add/Update” button.

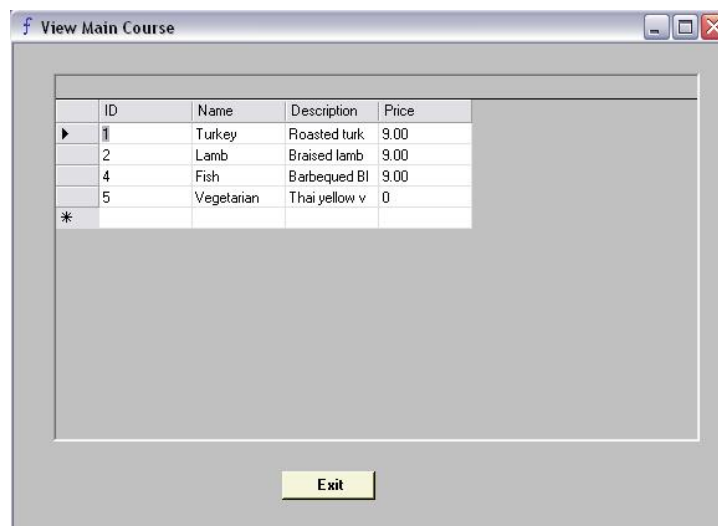
Entrees, Main Course, Desserts and Drinks Menus





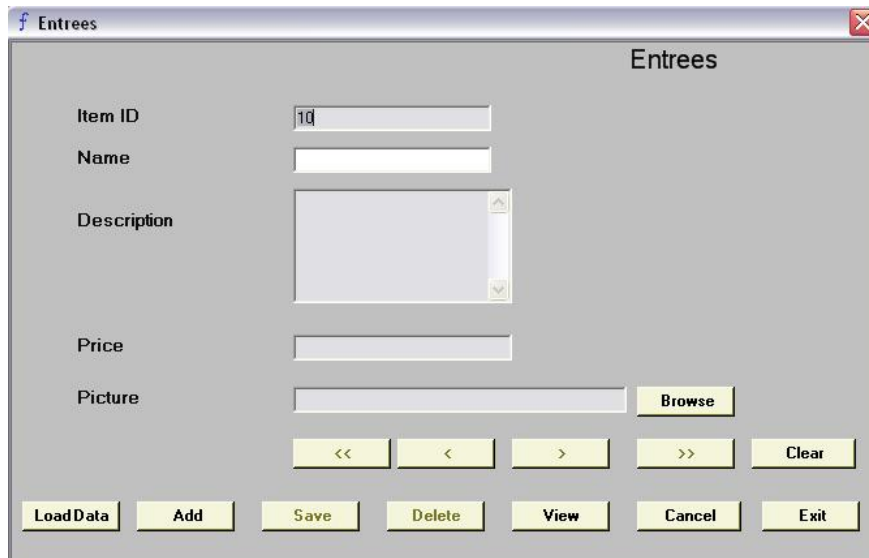
View items

It provides a quick list of all Entrees, Main Course, Desserts and Drinks. All windows are in same format as shown below.



Add/Edit/Delete

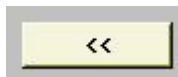
This will direct to a separate window .The format of the windows to Add/Edit/Delete Entrees, Main Course, Desserts, Drinks will be same.



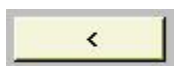
Window buttons



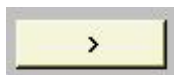
Press “Load Data” button to load table details which are stored in the database. To navigate through data use



Go to First record



Go to previous record



Go to last record



Add new Item:

When the window is loaded, it will set to add a new item by default. System will give the next available Item no. Able to provide a description of up to 255 characters. Make sure

not to enter “\$” sign when entering the price. This system will not be able to recognise “\$” as a currency type. Browse button can be used to insert a picture. To add a new Item, fill appropriate data and press “Add” button. Once “Add” button is pressed the data will store in the data base and new Item no will appear in the Item No field.



Save Changes

Go to the specific record you need to change .Then change the fields. Press “Save” button. This button actually saves the data after any changes made.



Delete a record

Select the record and press “Delete” button.



Cancel an operation.

You can press cancel button at any time to stop changing, loading data or adding a new record.



Clear fields:

This button will clear all fields except Item No.



Quick view:

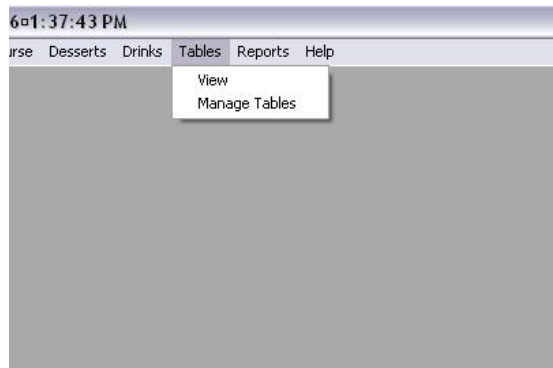
To get a non-printable list of Items. Pictures will not display at this window.



To exit to main window.

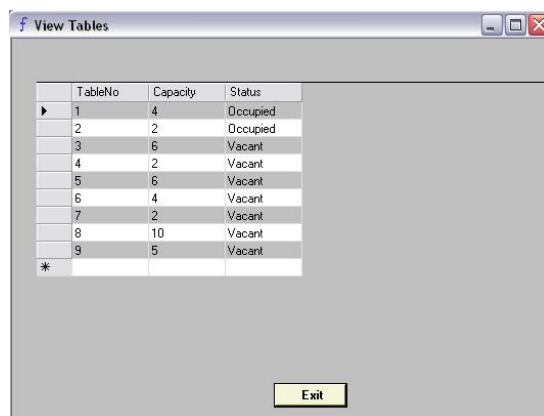
Tables

This pull down menu can be used to get quick view of table no, no of people can sit and availability.

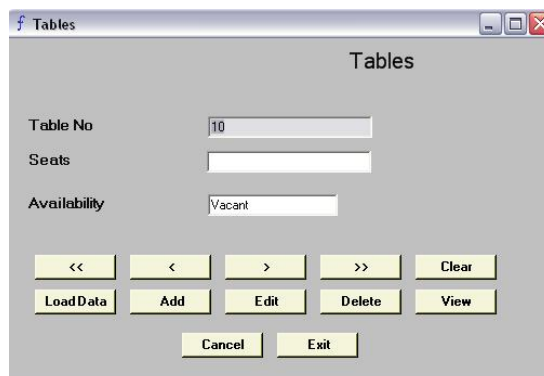


View

This window displays Table No, No of seats and Current status



Manage Tables



Load Table Details:

Press "Load Data" button to load table details which are stored in the database.

Add new Table:

When the window is loaded, it will set to add a new table by default.

System will give the next available table no. You only have to enter the no of seats. Availability will be 'Vacant' by default. To add a new table, enter the capacity in numbers. Press "Add" button. Once "Add" button being pressed the data will store in the data base and new table no will appear in the Table No field.

Edit a record:

Go to the specific record you need to change .Then change the fields. Press "Edit" button. This button actually saves the data after change

Delete a record:

Select the record and press "Delete" button.

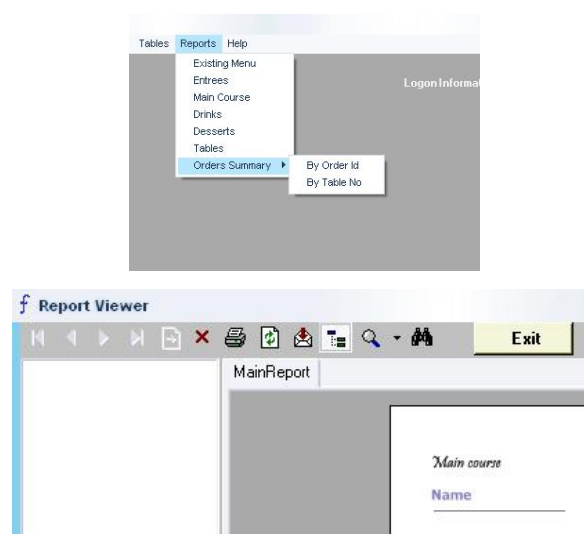
Cancel an operation:

You can press cancel button at any time to stop changing, loading data or adding a new record. After the 'Cancel' button is pressed, current operation will close and table records will be loaded.

Clear fields:

This button will clear the Seats field.

Reports



Existing Menu:

Gives a formatted report which includes Entrees, Main Course and desserts. This report can be used as the Menu of the restaurant.

Entrees:

Gives a report of all Entrees.

Main Course:

Gives a report of all Main Course meals.

Drinks:

Gives a report of all Drinks.

Desserts:

Gives a report of all Desserts.

Tables:

Gives a report of all Tables.

Orders Summary

By Order Id – This report will give a summary of all sales grouped by order id.

By Table No – This report will give a summary of all orders grouped by table no.

Report Buttons



To navigate through pages.



To restore the report



Print the report



Save the report in acrobat reader format (*.pdf)

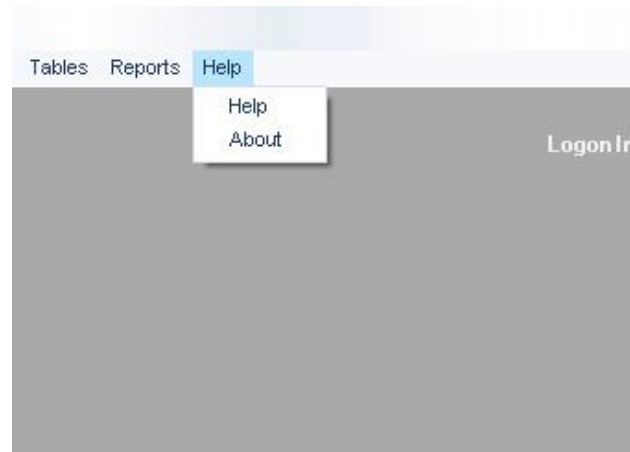


To Zoom in and out



To search words in reports

Help

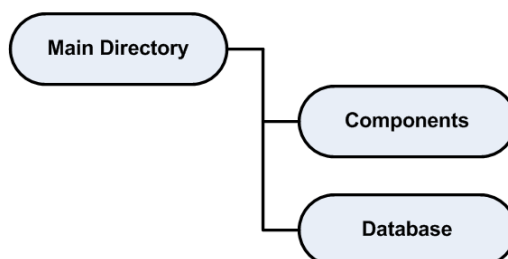


Help: Gives the Help and Support for this system.

About: Software information will display in this window.

8. Program Structure

The FIWOS application is made up of several files, each of which performing a particular function within the application. These files are grouped into three categories; the main directory, and the sub-directories “Components” and “Database”. The program files are grouped into these categories using the following directory structure:



The following is a list of required files and their relative directory for the FIWOS application;

Filename	Type	Directory
TableSummary.php	PHP Script	Main Directory
OrderSummary.php	PHP Script	Main Directory
AddMeals.php	PHP Script	Main Directory
AddDrinks.php	PHP Script	Main Directory
EditItem.php	PHP Script	Main Directory
Database.php	PHP Script	Components
EditOrder.php	PHP Script	Components
Scripts.php	PHP Script	Components
PrintTest.php	PHP Script	Components
VarHandlerPost.php	PHP Script	Components
VarHandlerGet.php	PHP Script	Components
Fiwos.js	JavaScript	Components
Fiwos.css	Cascade Style Sheet	Components
Fiwos.mdb	Access Database	Database

Table Summary

Description and Function

The Table Summary file displays a list of all available tables within the restaurant. Each one of these tables are read from the Fiwos database and marked as either “Occupied” or “Vacant”. From here the user can select a table to alter and will be taken to the “Order Summary” page.

File Details:

Name	Type	Size
TableSummary.php	PHP	4 KB

Source Code:

```
<?php

include( './Components/EditOrder.php' );
include( './Components/Database.php' );
include( './Components/Scripts.php' );
HtmlHeader( 'Table Summary' );

if( isset( $_POST[ "TableNo" ] ) && $order->itemcount > 0 ) {
    $dbdate = date( "d/m/Y" );
    $dbtableno = $_POST[ "TableNo" ];
    $dbstatus = AccessDB( "SELECT Status, TableNo FROM Tables Where TableNo =
$dbtableno" );
    if( strtolower( $dbstatus->fields[ 0 ], "Vacant" ) == 0 ) {
        AccessDB( "UPDATE Tables SET Status = 'Occupied' WHERE TableNo =
$dbtableno" );
        AccessDB( "INSERT INTO Orders(Status, OrderDate, TableNo, Total)
VALUES('Open', $dbdate, $dbtableno, $order->total)" );
        $dbboldtotal = 0;
    } else {
        $dbtotalresult = AccessDB( "SELECT Total, Status, TableNo FROM Orders
WHERE Status = 'Open' AND TableNo = $dbtableno" );
        $dbboldtotal = $dbtotalresult->fields[ 0 ];
    }
    AccessDB( "UPDATE Orders SET Total = ($dbboldtotal + $order->total) WHERE Status =
'Open' AND TableNo = $dbtableno" );
    $dbid = AccessDB( "SELECT OrderID, Status, TableNo FROM Orders WHERE Status =
'Open' AND TableNo = $dbtableno" );
    $printitems = array();
    $printqty = array();
    $printcount = 1;
    foreach( $order->get_contents() as $item ) {
        $dbname = $item[ 'name' ];
        $dbprice = $item[ 'price' ];
        $dbqty = $item[ 'qty' ];
    }
}
```

```

        $dbsubtotal = $item[ 'subtotal' ];
        $dbresult = $dbid->fields[ 0 ];
        AccessDB ( "INSERT INTO OrderDetails(OrderID, Name, Price, Qty, SubTotal)
VALUES($dbresult, '$dbname', $dbprice, $dbqty, $dbsubtotal)" );
        $printitems[ $printcount ]=$dbname ;
        $printqty[ $printcount ]=$dbqty ;
        $printcount++;
    }
//    PrintOrder('Kitchen', $dbtableno, $printitems, $printqty);
    session_unset() ;
    session_destroy() ;
}
if (isset($_POST["CloseTable"]) && ($_POST["CloseTable"] == "Yes")) {
    //Access DB
    //Retrieve all orders with table matching $_POST["CloseTable"]
    //Loop all records into array
    //Include - TableNo - Item - Qty - SubPrice - TotalPrice
    //Footer to include GrandTotal (state GST if needed)

    $dbdate = date("d/m/Y");
    $closetable = $_POST["TableNo"];
    AccessDB ("UPDATE Orders SET Status = 'Closed' WHERE TableNo = $closetable AND
OrderDate = '$dbdate'");
    AccessDB ("UPDATE Tables SET Status = 'Vacant' WHERE TableNo = $closetable");
}
echo ( '<div class="center">' );
echo ( '<div class="Heading1">Table Summary</div>' );
echo ( '<form name="TableSummary" method="post" action="OrderSummary.php">' );
echo ( '<table width="240" border="1">' );
echo ( '<tr>' );
echo ( '<td rowspan="3" class="center">' );

echo ( '<select name="TableNo" size="16">' );
for ($x = 1; $x <= RecordCount( 'Fiwos', 'Tables' ); $x++) {
    $status = AccessDB ("SELECT Status, TableNo FROM Tables WHERE TableNo = $x");
    echo ( '<option value="' . $x . '">Table: ' . $x . ' -- ' . $status->fields[ 0 ] . '</option>' );
}
echo ( '</select>' );
echo ( '</td>' );
echo ( '<input type="hidden" name="CloseTable" value="No">' );
echo ( '<td height="20" class="center"><input type="button" value="Finish Order"
onclick="SubmitClose()"></td>' );
echo ( '</tr>' );
echo ( '<tr><td height="20" class="center"><input type="button" value="Refresh List"
onclick="RefreshList()"></td></tr>' );
echo ( '<tr><td height="100" class="center">' );
echo ( '<div class="Heading2">Notice</div>' );
echo ( '<div class="Body1">Please select a table number and click "Create Order" to begin</div>' );
echo ( '</td></tr>' );
echo ( '</table>' );
echo ( '<br><input type="button" value="Create Order" name="test1"
onclick="SubmitTable()">' );
echo ( '</form>' );
echo ( '</div>' );
HtmlFooter() ;
?>

```

Order Summary

Description and Function

The Order Summary page lists the summary of items for the current order. This page also displays the current table number selected and provides the options to “Add Meals” or “Add Drinks”. These buttons will link the program to the “AddMeals.php” and “AddDrinks.php” files respectively.

File Details:

Name	Type	Size
OrderSummary.php	PHP	4 KB

Source Code:

```
<?php

include( './Components/EditOrder.php' );
include( './Components/Database.php' );
include( './Components/Scripts.php' );
HtmlHeader( 'Order Summary' );

if( isset( $_POST[ "amt" ] ) && ( $_POST[ "amt" ] > 0 ) ) {
    for( $i = 1; $i <= $_POST[ "amt" ]; $i++ ) {
        if( isset( $_POST[ "qty$i" ] ) && ( $_POST[ "qty$i" ] > 0 ) ) {
            $order->add_item( $_POST[ "id$i" ], $_POST[ "qty$i" ],
                $_POST[ "price$i" ], $_POST[ "name$i" ], $_POST[ "type$i" ] );
        }
    }
}

if( isset( $_POST[ "del" ] ) ) {
    $rid = intval( $_POST[ "id" ] );
    $order->del_item( $rid );
}

if( isset( $_POST[ "clear" ] ) ) {
    $order->empty_order();
}

echo( '<div class="Heading1">Order Summary</div>' );
echo( '<div class="Heading2">Table: ' . $curtable . '</div>' );
echo( '<div align="center"><form method=post name="OrderSummary"
action="TableSummary.php">' . "\n" );
echo( '<input type="hidden" name="EditName">' );
echo( '<input type="hidden" name="EditType">' );
echo( '<input type="hidden" name="EditQty">' );
if( $order->itemcount > 0 ) {
    foreach( $order->get_contents() as $item ) {
        echo( '<table border="0">' );
        echo( '<tr>' . "\n" );
        echo( '<td halign="center">' );
```

```

echo( '<input type="text" readonly size="15" class="'. $Item["type"] . "'
name="name'. $Item["id"] . "' value="'. $Item["name"] . "'>' );
echo( '</td>'. "\n" );
echo( '<td valign="center">' );
echo( '<input type="text" readonly size="2" class="'. $Item["type"] . "' name="qty'. $Item["id"] . "'
value="'. $Item["qty"] . "'>' );
echo( '</td>'. "\n" );
echo( '<td valign="center">' );
$t1 = $Item["name"];
$t2 = $Item["type"];
$t3 = $Item["qty"];
$test1 = "$t1";
$test2 = "$t2";
$test3 = "$t3";
echo( '<input type="button" name="Edit'. $Item["id"] . "' onclick="SubmitEditItem(' . $test1 . ',
' . $test2 . ', ' . $test3 . ') value="Edit">' . "\n" );
echo( '</td>'. "\n" );
echo( '<form method=post action="OrderSummary.php">' );
echo( '<td valign="center">' );
echo( '<input type="hidden" name="id" value="'. $Item["id"] . "'>' );
include( './Components/VarHandlerPost.php' );
echo( '<input type="submit" name="del" value="Del">' );
echo( '</td>' );
include( './Components/VarHandlerPost.php' );
echo( '</form>' );
echo( '</tr>' );
echo( '</table>'. "\n". "\n" );
}
    echo( '-----<br>' );
    echo( 'Total: $'. number_format( $order->total, 2 ) );
} else {
    echo( '<br><div class="Body1">No Items in Current Order</div>' );
}
echo( '<br><br>' );
echo( '<table border="0">' );
echo( '<tr align="center">' );
echo( '<td valign="center"><input type="button" value=" Add Meals " onclick="AddMeals()"></td>' );
echo( '<td valign="center"><input type="button" value="Add Drinks" onclick="AddDrinks()"></td>' );
echo( '<form method=post>' );
include( './Components/VarHandlerPost.php' );
echo( '<input type="hidden" name="amt" value="'. isset( $_POST["id"] ) . "'>' );
echo( '<td valign="center"><input type="submit" name="clear" value="Clear Order"></td>' );
echo( '</form>' );
echo( '</tr>' );
include( './Components/VarHandlerPost.php' );
echo( '<tr></tr></tr></tr>' );
echo( '<tr>'. "\n" );
echo( '<td></td>'. "\n" );
echo( '<td valign="center"><input type="button" value="Submit Order"
onclick="SubmitOrder()"></td>'. "\n" );
echo( '<td></td>'. "\n" );
echo( '</tr>'. "\n" );
echo( '</table>'. "\n" );
echo( '</form></div>'. "\n" );
//      echo( 'Price :$'. number_format( $Item["price"], 2 ). '<br>' );
//      echo( 'Subtotal :$'. number_format( $Item["subtotal"], 2 ). '<br>' );
HtmlFooter( );

```

?>

Add Meals

Description and Function

This page displays all of the food items available for order from the current restaurant menu. This file initiates the “DisplayScript” function from within the included file “Scripts.php” to access the FIWOS database and display all of the available items.

File Details:

Name	Type	Size
AddMeals.php	PHP	1 KB

Source Code:

```
<?php
include( './Components/Database.php' );
include( './Components/Scripts.php' );
HtmlHeader( 'Add Meals' );

$idcount = 1;
$menuitems = array();
$menuitems[1] = "Entrees";
$menuitems[2] = "Mains";
$menuitems[3] = "Desserts";

DisplayScript( 'Add Meals', $curtable, $menuitems, 'AddMeals', $idcount );

HtmlFooter();
?>
```


Add Drinks

Description and Function

Similar to the “AddMeals.php” file, the “AddDrinks.php” file relies mostly on the “DisplayScript” function from within the “Scripts.php” file to retrieve, format and display all of the Drinks records from within the database.

File Details:

Name	Type	Size
AddDrinks.php	PHP	1 KB

Source Code:

```
<?php
include( './Components/Database.php' );
include( './Components/Scripts.php' );
HtmlHeader( 'Add Drinks' );
$Idcount = RecordCount( 'Fiwos', 'Entrees' ) + RecordCount( 'Fiwos', 'Mains' ) +
RecordCount( 'Fiwos', 'Desserts' ) + 1;
$menuitems = array();
$menuitems[1] = "Drinks";
DisplayScript( 'Add Drinks', $curtable, $menuitems, 'AddDrinks', $Idcount );
HtmlFooter();
?>
```

Edit Item

Description and Function

The “EditItem.php” file is accessed from clicking the “Edit” button displayed next to an item in the current order. This page retrieves all of the available food modifiers from within the database and displays them in a table.

File Details:

Name	Type	Size
EditItem.php	PHP	3 KB

Source Code:

```
<?php
include ( './Components/EditOrder.php' );
include ( './Components/Database.php' );
include ( './Components/Scripts.php' );
HtmlHeader ( 'Edit Item' );
echo ( '<div class="Heading1">Edit Item</div>' );
echo ( '<div class="Heading2">Table: ' . $curtable . '</div>' );
echo ( '<div class="center"><form name="EditItem" method="post"
action="OrderSummary.php">' . "\n" );
$EditQty1 = 1;
$EditQty2 = $_POST[ "EditQty" ];
echo ( '<table width="250" border="0" class="center">' . "\n" );
echo ( '<tr>' . "\n" );
        echo ( '<td align="center">' . "\n" );
        echo ( '<input type="text" class="' . $_POST[ "EditType" ] . '" readonly size="40"
name="EditName" value="' . $_POST[ "EditName" ] . '">' . "\n" );
        echo ( '</td>' . "\n" );
echo ( '</tr>' );
echo ( '</table>' );
echo ( '<table width="150" border="0" class="center">' . "\n" );
echo ( '<tr>' . "\n" );
        echo ( '<td align="center"><input type="button"
onclick="EditAdd( ' . $EditQty1 . ', ' . $EditQty2 . ' )' value="Add"></td>' . "\n" );
        echo ( '<td align="center">' . "\n" );
        echo ( '<input type="text" class="' . $_POST[ "EditType" ] . '" readonly size="3"
name="EditQty" value="1 of ' . $_POST[ "EditQty" ] . '">' . "\n" );
        echo ( '</td>' . "\n" );
        echo ( '<td align="center"><input type="button" onclick=""
value="Del"></td>' . "\n" );
echo ( '</tr>' );
echo ( '</table>' );
echo ( '<br>' );
echo ( '<table width="250" border="1">' . "\n" );
echo ( '<tr>' );
```

```

echo( '<td rowspan="3" class="center">.'. "\n" );
echo( '<select name="EditItem" width="10" size="10">.'. "\n" );
$edittype = $_POST["EditType"];
$edititem = AccessDB( "SELECT Name FROM $edittype" );
for( $x = 1; $x <= RecordCount( 'Fiwos', $edittype ); $x++ ) {
    echo( '<option name="Edit' . $x . '" value="' . $edititem->fields[0] . '">'. $edititem->fields[0] . '</option>'. "\n" );
    $edititem->MoveNext();
}
echo( '</select>.'. "\n" );
echo( '</td>.'. "\n" );
$resetitem = $_POST["EditName"];
$tttr = "$resetitem";
echo( '<td height="20" class="center"><input type="button" value=" With "
onclick="EditWith()"></td>' );
echo( '</tr>.'. "\n" );
echo( '<tr>' );
echo( '<td height="20" class="center"><input type="button" value="Without"
onclick="EditWithout()"></td>' );
echo( '</tr>' );
echo( '<tr>' );
$resetitem = $_POST["EditName"];
$tttr = "$resetitem";
echo( '<td height="20" class="center"><input type="button" value=" Reset "
onclick="ResetItem(' . $tttr . ')></td>.'. "\n" . "\n" );
echo( '</tr>' );
echo( '</table>' );
echo( '<br><input type="button" value="Confirm Edit" onclick="SubmitConfirmEdit()">.'. "\n" );
include( './Components/VarHandlerPost.php' );
echo( '</form>.'. "\n" );
echo( '</div>' );
HtmlFooter();
?>

```

Database

Description and Function

The database file is critical in the FIWOS application as it defines a set of functions for accessing the database that is heavily used by the other files. In addition to this, “Database.php” defines functions for parsing, returning, and counting database records and SQL results.

File Details:

Name	Type	Size
Database.php	PHP	1 KB

Source Code:

```
<?php
function AccessDB($sql) {
    $db = 'C:\Inetpub\wwwroot\Database\Fiwos.mdb';
    $conn = new COM('ADODB.Connection');
    $conn->Open("DRIVER={Microsoft Access Driver (*.mdb)}; DBQ=$db");
    $result = $conn->Execute($sql);
    return $result;
}
function RecordCount($database, $table) {
    $conn=odbc_connect($database, '', '');
    $sql="SELECT * FROM $table";
    $result = odbc_exec($conn, $sql);
    $count=0;
    while($temp = odbc_fetch_into($result, &$counter)){
        $count++;
    }
    return $count;
}
function ResultCount($result) {
    $numrows = 1;
    while($cresult = $result->FetchRow()) {
        $numrows++;
    }
    return $numrows;
}
?>
```

Edit Order

Description and Function

This is another critical file in the application that defines a set of functions to perform the majority of the internal calculations related to the items in each order. Because a browser session is maintained, items that are added or removed from the current order are kept track of. “EditOrder.php” also includes functions for clearing the entire order and keeping track of item quantities and price totals.

File Details

Name	Type	Size
EditOrder.php	PHP	19 KB

Source Code

```
<?php
session_start();
$order =& $_SESSION['Order'];
if(!is_object($order)) $order = new Order();
class Order {
    var $total = 0;
    var $itemcount = 0;
    var $items = array();
    var $itemprices = array();
    var $itemqtys = array();
    var $itemname = array();
    var $itemtype = array();
    function Order() {}
    function get_contents() {
        $items = array();
        foreach($this->items as $tmp_item) {
            $item = FALSE;
            $item['id'] = $tmp_item;
            $item['qty'] = $this->itemqtys[$tmp_item];
            $item['price'] = $this->itemprices[$tmp_item];
            $item['name'] = $this->itemname[$tmp_item];
            $item['type'] = $this->itemtype[$tmp_item];
            $item['subtotal'] = $item['qty'] * $item['price'];
            $items[] = $item;
        }
    }
    function SortOrder($a, $b) {
        if ($a['id'] == $b['id']) return 0;
        return ($a['id'] < $b['id']) ? -1 : 1;
    }
}
usort($items, 'SortOrder');
return $items;
```

```

    }
    function add_item($itemid, $qty=1, $price = FALSE, $name = FALSE, $type
= FALSE) {
        if(isset($this->itemqtys[$itemid]) && ($this->itemqtys[$itemid] >
0)) {
            $this->itemqtys[$itemid] = $qty + $this->itemqtys[$itemid];
            $this->_update_total();
        } else {
            $this->items[] = $itemid;
            $this->itemqtys[$itemid] = $qty;
            $this->itemprices[$itemid] = $price;
            $this->itemname[$itemid] = $name;
            $this->itemtype[$itemid] = $type;
        }
        $this->_update_total();
    }
    function edit_item($itemid, $qty) {
        if($qty < 1) {
            $this->del_item($itemid);
        } else {
            $this->itemqtys[$itemid] = $qty;
        }
        $this->_update_total();
    }
    function del_item($itemid) {
        $ti = array();
        $this->itemqtys[$itemid] = 0;
        foreach($this->items as $item) {
            if($item != $itemid) {
                $ti[] = $item;
            }
        }
        $this->items = $ti;
        $this->_update_total();
    }
    function empty_order() {
        $this->total = 0;
        $this->itemcount = 0;
        $this->items = array();
        $this->itemprices = array();
        $this->itemqtys = array();
        $this->itemname = array();
        $this->itemtype = array();
    }
    function _update_total() {
        $this->itemcount = 0;
        $this->total = 0;
        if(sizeof($this->items > 0)) {
            foreach($this->items as $item) {
                $this->total = $this->total + ($this->itemprices[$item]
* $this->itemqtys[$item]);
                $this->itemcount++;
            }
        }
    }
}
?>

```


Scripts

Description and Function

“Scripts.php” is a component of the FIWOS application that stores a variety of commonly used functions by the rest of the application. It is within the “Scripts.php” file that the menu items for “AddDrinks.php” and “AddMeals.php” are retrieved and displayed. Also, this file defines the printing functions that determine how each of the receipts are formatted and printed, and to which printer. Other functions such as HTML header and footer generators and testing are also included here.

File Details:

Name	Type	Size
Scripts.php	PHP	5 KB

Source Code:

```
<?php
//Includes
include( './Components/VarHandlerGet.php' );
function DisplayScript( $heading, $curtable, $menuitems, $formname, $idcount ) {
    echo( '<div class="Heading1">'. $heading. '</div>' );
    echo( '<div class="Heading2">Table: '. $curtable. '</div>' );
    echo( '<div align="center"><form method="post" name="'. $formname. '"
action="OrderSummary.php">'. "\n" );
    $items = array();
    for( $x = 1; $x <= count( $menuitems ); $x++ ) {
        $dbmenuitems = AccessDB( "SELECT ID, Name, Price FROM
$menuitems[$x]" );
        for( $i = 1; $i <= RecordCount( 'Fiwos', $menuitems[$x] ); $i++ ) {
            $items[$i] = array( "id"=>$i, "name"=>ucwords( $dbmenuitems-
>fields[1] ), "price"=>ucwords( $dbmenuitems->fields[2] ) );
            $dbmenuitems->MoveNext();
        }

        foreach( $items as $key ) {
            echo( '<input type="hidden" name="id". $idcount. '"
value="'. $idcount. '">'. "\n" );
            echo( '<input type="hidden" name="amt"
value="'. $idcount. '">'. "\n" );
            echo( '<input type="hidden" name="price". $idcount. '"
value="'. $key[ "price" ]. '">'. "\n" );
            echo( '<input type="hidden" name="type". $idcount. '"
value="'. $menuitems[ $x ]. '">'. "\n" );
            echo( '<table border="0">'. "\n" );
            echo( '<tr>'. "\n" );
            echo( '<td halign="center">'. "\n" );
```



```

        echo( '<input type="text" class="'. $menuitems[ $x ] . '" readonly
size="15" name="name'. $idcount . '" value="'. $key[ "name" ] . "'>'. "\n" );
        echo( '</td>'. "\n" );
        echo( '<td valign="center">'. "\n" );
        echo( '<input type="text" class="'. $menuitems[ $x ] . '" readonly
size="2" name="qty'. $idcount . '" value="0">'. "\n" );
        echo( '</td>'. "\n" );
        echo( '<td valign="center"><input type="button"
onclick="IncQty'. $idcount . '()" value="Add"></td>'. "\n" );
        echo( '<td valign="center"><input type="button"
onclick="DecQty'. $idcount . '()" value="Del"></td>'. "\n" );
        echo( '</tr>'. "\n" );
        echo( '</table>'. "\n". "\n" );
        echo( '<script type="text/javascript">'. "\n" );
        echo( 'function IncQty'. $idcount . '() {'. "\n" );
        echo( 'document.'. $formname . '.qty'. $idcount . '.value++'. "\n" );
        echo( '}'. "\n" );
        echo( 'function DecQty'. $idcount . '() {'. "\n" );
        echo( 'if(document.'. $formname . '.qty'. $idcount . '.value > 0) {
document.'. $formname . '.qty'. $idcount . '.value-- }'. "\n" );
        echo( '}'. "\n" );
        echo( '</script>'. "\n". "\n" );
        $idcount++;
    }
}
include( './Components/VarHandlerPost.php' );
echo( '<br><input type="submit" value="Add to Order" name="add">'. "\n" );
echo( '</form></div>'. "\n" );
}
function HtmlHeader( $header ) {
    echo( '<html>' );
    echo( '<head>' );
    echo( '<title>'. $header . '</title>' );
    echo( '<link rel="stylesheet" type="text/css" href="'. $formname . '/Components/Fiwos.css">' );
    echo( '<script src="'. $formname . '/Components/Fiwos.js">' );
    echo( '</script>' );
    echo( '</head>' );
    echo( '<body>' );
}
function HtmlFooter() {
    echo( '</body>' );
    echo( '</html>' );
}
function PrintOrder( $printername, $tableno, $printitems, $printqty ) {
    $handle = printer_open( $printername );
    printer_start_doc( $handle, 'Order' );
    printer_start_page( $handle );
    $tablefont = printer_create_font( "Arial", 72, 48, 500, false, false, false,
0 );
    $headingfont = printer_create_font( "Arial", 72, 48, 500, false, true,
false, 0 );
    $bodyfont = printer_create_font( "Arial", 72, 48, 200, false, false, false,
0 );
    printer_select_font( $handle, $tablefont );
    printer_draw_text( $handle, "Table: $tableno", 350, 50 );
    $y = 100;
    printer_select_font( $handle, $headingfont );

```

```

printer_draw_text($handle, 'Item', 0, $y);
printer_draw_text($handle, 'Qty', 1000, $y);
$y = 200;
$fontsize = 72;
printer_select_font($handle, $bodyfont);
for($x = 1; $x <= count($printitems); $x++) {
    $y+=$fontsize;
    printer_draw_text($handle, $printitems[$x], 0, $y);
    printer_draw_text($handle, $printqty[$x], 1000, $y);
}
printer_delete_font($tablefont);
printer_delete_font($headingfont);
printer_delete_font($bodyfont);
printer_end_page($handle);
printer_end_doc($handle);
printer_close($handle);
}
function PrintTest() {
    $p = printer_open('HP 6200 Network');
    printer_set_option($p, PRINTER_PAPER_FORMAT, PRINTER_FORMAT_A4);
    printer_start_doc($p, "Testpage");
    printer_start_page($p);
    $pen = printer_create_pen(PRINTER_PEN_SOLID, 1, "000000");
    $font = printer_create_font("Courier", 37, 19, PRINTER_FW_NORMAL, false,
false, false, 0);
    printer_select_pen($p, $pen);
    printer_select_font($p, $font);
    for ($i = 0; $i < 4600; $i+=100) {
        printer_draw_line($p, $i, 0, $i, 6700);
        printer_draw_text($p, $i, $i, 0);
    }
    for ($i = 0; $i < 6700; $i+=100) {
        printer_draw_line($p, 0, $i, 4600, $i);
        printer_draw_text($p, $i, 0, $i);
    }
    printer_delete_font($font);
    printer_delete_pen($pen);
    printer_end_page($p);
    printer_end_doc($p);
    printer_close($p);
}
?>

```

Print Test

Description and Function

The “PrintTest.php” file is just that, an included file in the application that provides some alternative print testing ability. The main difference between this file and the printing functions defined in the “Scripts.php” file is that this one is written in JavaScript as a client-side print control alternative that was to be explored further.

File Details:

Name	Type	Size
PrintTest.php	PHP/Javascript	2 KB

Source Code:

```
<script language="JavaScript">
var gAutoPrint = true; // Flag for whether or not to automatically call the print function
function printSpecial()
{
    if (document.getElementById != null)
    {
        var html = '<HTML>\n<HEAD>\n';
        if (document.getElementsByTagName != null)
        {
            var headTags = document.getElementsByTagName("head");
            if (headTags.length > 0)
                html += headTags[0].innerHTML;
        }
        html += '\n</HE' + 'AD>\n<BODY>\n';
        var printReadyElem = document.getElementById("printReady");
        if (printReadyElem != null)
        {
            html += printReadyElem.innerHTML;
        }
        else
        {
            alert("Could not find the printReady section in the HTML");
            return;
        }
        html += '\n</BO' + 'DY>\n<HT' + 'ML>';
        var printWin = window.open("", "printSpecial");
        printWin.document.open();
        printWin.document.write(html);
        printWin.document.close();
        if (gAutoPrint)
            printWin.print();
    }
    else
    {
```

```
        alert( "Sorry, the print ready feature is only available in modern browsers." );
    }
}
</script>
//// To be added to controls
<div id="printReady">
<p>Hello World! Your Printable Page Content Goes Here</p>
</div>
<form id="printMe" name="printMe">
<input type="button" name="printMe" onClick="printSpecial()" value="Print this Page">
</form>
//// To be added to controls
```

Variable Handler Post

Description and Function

This file came about when particular variables had to be defined and accessed among multiple web pages within the same cookie session. This file is included in most of the other files in this application as it defines the “TableNo” variable that is passed between pages. As addition values are required they will be defined here.

File Details:

Name	Type	Size
VarHandlerPost.php	PHP	1 KB

Source Code:

```
<?php
    echo( '<input type="hidden" name="TableNo" value="' . $curtable . '>' );
?>
```

Variable Handler Get

Description and Function

This file receives the values that are defined in “VarHandlerPost.php”. Additional values will be added as the application is enhanced.

File Details:

Name	Type	Size
VarHandlerGet.php	PHP	1 KB

Source Code:

```
<?php
    $curtable = $_POST["TableNo"];
?>
```

FIWOS Control Script

Description and Function

This JavaScript file defines all of the client-side processing functions behind each of the HTML form buttons that are displayed on each of the FIWOS application pages. Many variables are defined here relating to the submission of each of the forms, and to which subsequent web page.

File Details:

Name	Type	Size
Fiwos.js	Javascript	2 KB

Source Code:

```
function AddMeals() {
    document.OrderSummary.action='AddMeals.php'
    document.OrderSummary.submit()
}
function AddDrinks() {
    document.OrderSummary.action='AddDrinks.php'
    document.OrderSummary.submit()
}
function SubmitClose() {
    if(document.TableSummary.TableNo.value > 0) {
        document.TableSummary.CloseTable.value='Yes'
        document.TableSummary.action='TableSummary.php'
        document.TableSummary.submit()
    }
}
function SubmitConfirmEdit() {
    document.EditItem.action='OrderSummary.php'
    document.EditItem.submit()
}
function SubmitEditItem($EditName, $EditType, $EditQty) {
    document.OrderSummary.EditName.value=$EditName
    document.OrderSummary.EditType.value=$EditType
    document.OrderSummary.EditQty.value=$EditQty
    document.OrderSummary.action='EditItem.php'
    document.OrderSummary.submit()
}
function EditWith($EditWith) {
    document.EditItem.EditName.value+=' w/' + document.EditItem.EditItem.value
}
function EditWithout($EditWithout) {
    document.EditItem.EditName.value+=' wo/' + document.EditItem.EditItem.value
}
function ResetItem($ResetItem) {
    document.EditItem.EditName.value=$ResetItem
}
```

```
function EditAdd(qty1, qty2) {
    if(qty1 < qty2) {
        qty1++
        document.EditItem.EditQty.value = qty1 + " of " + qty2
    }
}
function RefreshList() {
    navigate('TableSummary.php')
}
function SubmitTable() {
    if(document.TableSummary.TableNo.value > 0) {
        document.TableSummary.action='OrderSummary.php'
        document.TableSummary.submit()
    }
}
function SubmitOrder() {
    document.OrderSummary.action='TableSummary.php'
    document.OrderSummary.submit()
}
```


FIWOS Cascade Style Sheet

Description and Function

This file defines all of the text styling attributes that the FIWOS Application uses. This performs several functions relating to the look and feel of the application as well as all of the colours that it uses.

File Details:

Name	Type	Size
Fiwos.css	HTML Style Sheet	7 KB

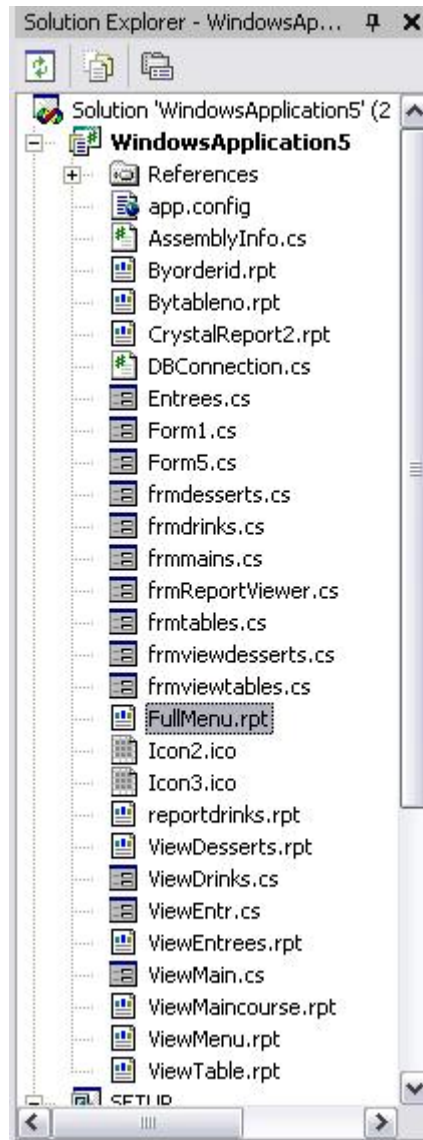
Source Code:

```
.center {
    text-align:center;
}
.Heading1 {
    color:#000000;
    font-family: arial;
    font-weight:bold;
    text-align:center;
    font-size: 130%;
}
.Heading2 {
    color:#0000FF;
    font-family: arial;
    font-weight:bold;
    text-align:center;
    font-size: 100%;
}
.Body1 {
    color:#000000;
    font-family: arial;
    text-align:center;
    font-size: 100%;
}
.Entrees {
    color:#000000;
    font-family: arial;
    font-weight:bold;
    text-align:center;
    background-color:#7FFF00;
}
.Mains {
    color:#000000;
    font-family: arial;
    font-weight:bold;
    text-align:center;
    background-color:#FF7F50;
```

```
}  
.Desserts {  
    color:#000000;  
    font-family: arial;  
    font-weight:bold;  
    text-align:center;  
    background-color:#FFD700;  
}  
.Drinks {  
    color:#000000;  
    font-family: arial;  
    font-weight:bold;  
    text-align:center;  
    background-color:#6495ED;  
}  
.Notice {  
    color:#0000FF;  
    font-family: arial;  
    font-weight:bold;  
    text-align:center;  
}
```

9. Back-End Application – Program code (C#.NET 2003)

Form Structure



App.config

```
<?xml version="1.0" encoding="utf-8"?>
<configuration>
  <appSettings>
    <!-- User application and configured property settings go here.-->
    <!-- Example: <add key="settingName" value="settingValue"/> -->
    <add key="crystalReportViewer1.AutoScroll" value="True" />
    <add key="crystalReportViewer1.DisplayToolBar" value="True" />
    <add key="textBox2.AcceptsReturn" value="False" />
    <add key="userName" value="admin" />
    <add key="password" value="0xRH0wS7FkTmWPSImFloRA==" />
    <add key="DataSource" value="Provider=Microsoft.Jet.OLEDB.4.0;Data
Source=c:\\fiwos\\Fiwos.mdb" />
  </appSettings>
</configuration>
```

</configuration>

DBConnection.cs

```
using System;
using System.Xml.Serialization;
using System.Xml;
using System.Xml.XPath;
using System.Data.OleDb;
using System.Data;
using System.Security.Cryptography;
using System.IO;
using System.Text;
using System.Configuration;
namespace WindowsApplication5
{
    public class DBConnection
    {
        private Byte[] KEY_64 = { 1, 2, 3, 4, 5, 6, 7, 8 };
        private Byte[] IV_64 = { 8, 7, 6, 5, 4, 3, 2, 1 };
        public DBConnection()
        {
        }
        public string Decrypt(string value)
        {
            DESCryptoServiceProvider cryptoProvider = new
DESCryptoServiceProvider();
            Byte[] buffer = Convert.FromBase64String(value);
            MemoryStream ms = new MemoryStream(buffer);
            CryptoStream cs = new CryptoStream(ms,
cryptoProvider.CreateDecryptor(KEY_64, IV_64), CryptoStreamMode.Read);
            StreamReader sr = new StreamReader(cs);
            return sr.ReadToEnd();
        }
        public string Encrypt(string value)
        {
            DESCryptoServiceProvider cryptoProvider = new
DESCryptoServiceProvider();
            MemoryStream ms = new MemoryStream();
            CryptoStream cs = new CryptoStream(ms,
cryptoProvider.CreateEncryptor(KEY_64, IV_64), CryptoStreamMode.Write);
            StreamWriter sw = new StreamWriter(cs);
            sw.Write(value);
            sw.Flush();
            cs.FlushFinalBlock();
            ms.Flush();
            return Convert.ToBase64String(ms.GetBuffer(), 0,
Convert.ToInt32(ms.Length));
        }
        public OleDbConnection getOLDBConnection()
        {
            OleDbConnection myConn = new
OleDbConnection(ConfigurationSettings.AppSettings["DataSource"]);
            return myConn;
        }
        public void updateuser(string un,string pw)
        {
            try
            {
                string filename = "C:\\fiwos\\AppConfig\\unpw.xml";
                XmlDocument xmlDoc = new XmlDocument();
```

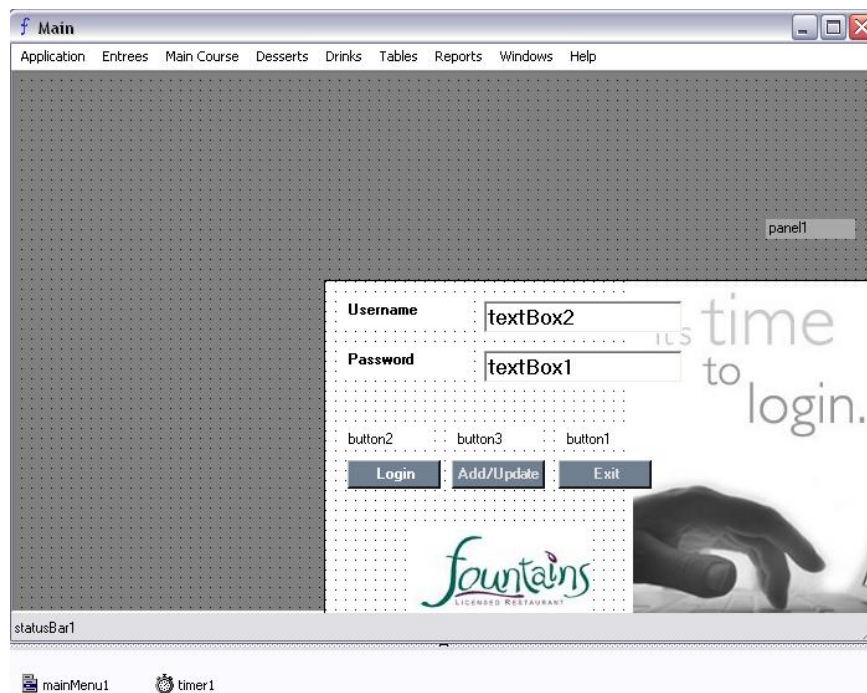
```

        try
        {
            xmlDoc.Load(filename);
        }
        catch (System.IO.FileNotFoundException)
        {
            XmlTextWriter xmlWriter = new XmlTextWriter(filename,
System.Text.Encoding.UTF8);
            xmlWriter.Formatting = Formatting.Indented;
            xmlWriter.WriteProcessingInstruction("xml", "version='1.0'
encoding='UTF-8'");
            xmlWriter.WriteStartElement("Config");
            xmlWriter.Close();
            xmlDoc.Load(filename);
        }
        XmlNode root = xmlDoc.DocumentElement;
        XmlElement childNode = xmlDoc.CreateElement("MAX");
        XmlElement FullNameNode = xmlDoc.CreateElement("PW");
        XmlElement UserNameNode = xmlDoc.CreateElement("UN");
        XmlText textNode1 = xmlDoc.CreateTextNode(un);
        XmlText textNode2 = xmlDoc.CreateTextNode(pw);
        root.AppendChild(childNode);
        childNode.AppendChild(FullNameNode);
        childNode.AppendChild(UserNameNode);
        xmlDoc.Save(filename);
    }
    catch (Exception ex)
    {
        Console.WriteLine(ex.ToString());
    }
}
public string getConString()
{
    XPathDocument doc = new
XPathDocument("C:\\fiwos\\AppConfig\\config.xml");
    XPathNavigator nav = doc.CreateNavigator();
    XPathExpression expr;
    expr = nav.Compile("Config/DB/*");
    string temp="";
    XPathNodeIterator iterator = nav.Select(expr);
    try
    {
        while (iterator.MoveNext())
        {
            XPathNavigator nav2 = iterator.Current.Clone();
            temp += nav2.Value + "@";
        }
    }
    catch (Exception ex)
    {
        Console.WriteLine(ex.Message);
    }
    return temp;
}
public string getUserDetails()
{
    XPathDocument doc = new
XPathDocument("C:\\fiwos\\AppConfig\\config.xml");
    XPathNavigator nav = doc.CreateNavigator();
    XPathExpression expr;

```

```
    expr = nav.Compile("Config/DB/MAX/*");
    string temp="";
    XPathNodeIterator iterator = nav.Select(expr);
    try
    {
        while (iterator.MoveNext())
        {
            XPathNavigator nav2 = iterator.Current.Clone();
            temp += nav2.Value + "@";
        }
    }
    catch (Exception ex)
    {
        Console.WriteLine(ex.Message);
    }
    return temp;
}
}
```

Form1.cs



```
using System;
using System.Drawing;
using System.Collections;
using System.ComponentModel;
using System.Windows.Forms;
using System.Data;
using System.Timers;
using System.Security.Cryptography;
using System.IO;
using System.Text;
using System.Data.OleDb;
using System.Configuration;
using System.Xml;
using System.Configuration;
using CrystalDecisions.CrystalReports.Engine;
namespace WindowsApplication5
{
    /// <summary>
    /// Summary description for Form1.
    /// </summary>
    public class SplashScreen : System.Windows.Forms.Form
    {
        DataSet ds=null;
        private System.Windows.Forms.MainMenu mainMenu1;
        private System.Windows.Forms.MenuItem menuItem1;
        private System.Windows.Forms.MenuItem menuItem2;
        private System.Windows.Forms.MenuItem menuItem3;
        private System.Windows.Forms.MenuItem menuItem4;
        private System.Windows.Forms.MenuItem menuItem5;
        private System.Windows.Forms.MenuItem menuItem6;
        private System.Windows.Forms.MenuItem menuItem7;
        private System.Windows.Forms.MenuItem menuItem8;
        private System.Windows.Forms.MenuItem menuItem9;
        private System.Windows.Forms.MenuItem menuItem10;
        private System.Windows.Forms.MenuItem menuItem11;
```

```

private System.Windows.Forms.MenuItem menuItem12;
private System.Windows.Forms.MenuItem menuItem13;
private System.Windows.Forms.MenuItem menuItem15;
private System.Windows.Forms.MenuItem menuItem16;
private System.Windows.Forms.MenuItem menuItem17;
private System.Windows.Forms.MenuItem menuItem18;
private System.Windows.Forms.MenuItem menuItem19;
private System.Windows.Forms.MenuItem menuItem20;
private System.Windows.Forms.MenuItem menuItem21;
private System.Windows.Forms.MenuItem menuItem22;
private System.Windows.Forms.MenuItem menuItem23;
private System.Windows.Forms.MenuItem menuItem24;
private System.Windows.Forms.MenuItem menuItem25;
private System.Windows.Forms.MenuItem menuItem14;
private System.Windows.Forms.MenuItem menuItem26;
private System.Windows.Forms.MenuItem menuItem27;
private System.Windows.Forms.MenuItem menuItem28;
private System.Windows.Forms.TextBox textBox1;
private System.Windows.Forms.TextBox textBox2;
private System.Windows.Forms.Button button1;
private System.Windows.Forms.Label label1;
private System.Windows.Forms.Label label2;
private System.Windows.Forms.Button button2;
private System.Windows.Forms.Button button3;
private System.Windows.Forms.Panel panel1;
private System.Windows.Forms.MenuItem menuItem29;
private System.Windows.Forms.PictureBox pictureBox2;
private System.Windows.Forms.PictureBox pictureBox3;
private System.Windows.Forms.MenuItem menuItem30;
private System.Windows.Forms.MenuItem menuItem31;
private System.Windows.Forms.MenuItem menuItem32;
private System.Windows.Forms.Timer timer1;
private System.Windows.Forms.MenuItem menuItem33;
private System.Windows.Forms.StatusBar statusBar1;
private System.Windows.Forms.StatusBarPanel UserPanel;
private System.Windows.Forms.StatusBarPanel statusBarPanel1;
private System.ComponentModel.IContainer components;
public void menudisable()
{
    //menuItem1.Enabled = false;
        //menuItem2.Enabled = false;
        menuItem3.Enabled = false;
        menuItem4.Enabled = false;
        menuItem5.Enabled = false;
        menuItem6.Enabled = false;
        menuItem7.Enabled = false;
        menuItem8.Enabled = false;
        menuItem9.Enabled = false;
        menuItem10.Enabled = false;
        menuItem11.Enabled = false;
        menuItem12.Enabled = false;
        menuItem13.Enabled = false;
        menuItem14.Enabled = false;
        menuItem15.Enabled = false;
        menuItem16.Enabled = false;
        menuItem17.Enabled = false;
        menuItem18.Enabled = false;
        menuItem19.Enabled = false;
        menuItem20.Enabled = false;
        menuItem21.Enabled = false;
        menuItem22.Enabled = false;

```



```

        menuItem23.Enabled = false;
        menuItem24.Enabled = false;
        menuItem25.Enabled = false;
        menuItem26.Enabled = false;
        menuItem27.Enabled = false;
        menuItem28.Enabled = false;
        menuItem30.Enabled = false;
    }
    public void menuenable()
    {
        //menuItem1.Enabled = true;
        //menuItem2.Enabled = true;
        menuItem3.Enabled = true;
        menuItem4.Enabled = true;
        menuItem5.Enabled = true;
        menuItem6.Enabled = true;
        menuItem7.Enabled = true;
        menuItem8.Enabled = true;
        menuItem9.Enabled = true;
        menuItem10.Enabled = true;
        menuItem11.Enabled = true;
        menuItem12.Enabled = true;
        menuItem13.Enabled = true;
        menuItem14.Enabled = true;
        menuItem15.Enabled = true;
        menuItem16.Enabled = true;
        menuItem17.Enabled = true;
        menuItem18.Enabled = true;
        menuItem19.Enabled = true;
        menuItem20.Enabled = true;
        menuItem21.Enabled = true;
        menuItem22.Enabled = true;
        menuItem23.Enabled = true;
        menuItem24.Enabled = true;
        menuItem25.Enabled = true;
        menuItem26.Enabled = true;
        menuItem27.Enabled = true;
        menuItem28.Enabled = true;
        menuItem30.Enabled = true;
    }

    public SplashScreen()
    {
        InitializeComponent();
        //
        // TODO: Add any constructor code after InitializeComponent call
        //
    }
    /// <summary>
    /// Clean up any resources being used.
    /// </summary>
    protected override void Dispose( bool disposing )
    {
        if( disposing )
        {
            if (components != null)
            {
                components.Dispose();
            }
        }
        base.Dispose( disposing );
    }

```

```

}
#region Windows Form Designer generated code
/// <summary>
/// Required method for Designer support - do not modify
/// the contents of this method with the code editor.
/// </summary>
private void InitializeComponent()
{
    this.components = new System.ComponentModel.Container();
    System.Resources.ResourceManager resources = new
System.Resources.ResourceManager(typeof(SplashScreen));
    this.mainMenu1 = new System.Windows.Forms.MainMenu();
    this.menuItem1 = new System.Windows.Forms.MenuItem();
    this.menuItem2 = new System.Windows.Forms.MenuItem();
    this.menuItem29 = new System.Windows.Forms.MenuItem();
    this.menuItem30 = new System.Windows.Forms.MenuItem();
    this.menuItem3 = new System.Windows.Forms.MenuItem();
    this.menuItem4 = new System.Windows.Forms.MenuItem();
    this.menuItem5 = new System.Windows.Forms.MenuItem();
    this.menuItem22 = new System.Windows.Forms.MenuItem();
    this.menuItem23 = new System.Windows.Forms.MenuItem();
    this.menuItem24 = new System.Windows.Forms.MenuItem();
    this.menuItem7 = new System.Windows.Forms.MenuItem();
    this.menuItem10 = new System.Windows.Forms.MenuItem();
    this.menuItem11 = new System.Windows.Forms.MenuItem();
    this.menuItem6 = new System.Windows.Forms.MenuItem();
    this.menuItem8 = new System.Windows.Forms.MenuItem();
    this.menuItem9 = new System.Windows.Forms.MenuItem();
    this.menuItem12 = new System.Windows.Forms.MenuItem();
    this.menuItem27 = new System.Windows.Forms.MenuItem();
    this.menuItem28 = new System.Windows.Forms.MenuItem();
    this.menuItem15 = new System.Windows.Forms.MenuItem();
    this.menuItem25 = new System.Windows.Forms.MenuItem();
    this.menuItem16 = new System.Windows.Forms.MenuItem();
    this.menuItem17 = new System.Windows.Forms.MenuItem();
    this.menuItem18 = new System.Windows.Forms.MenuItem();
    this.menuItem19 = new System.Windows.Forms.MenuItem();
    this.menuItem20 = new System.Windows.Forms.MenuItem();
    this.menuItem21 = new System.Windows.Forms.MenuItem();
    this.menuItem31 = new System.Windows.Forms.MenuItem();
    this.menuItem32 = new System.Windows.Forms.MenuItem();
    this.menuItem33 = new System.Windows.Forms.MenuItem();
    this.menuItem13 = new System.Windows.Forms.MenuItem();
    this.menuItem14 = new System.Windows.Forms.MenuItem();
    this.menuItem26 = new System.Windows.Forms.MenuItem();
    this.textBox1 = new System.Windows.Forms.TextBox();
    this.textBox2 = new System.Windows.Forms.TextBox();
    this.button1 = new System.Windows.Forms.Button();
    this.label1 = new System.Windows.Forms.Label();
    this.label2 = new System.Windows.Forms.Label();
    this.button2 = new System.Windows.Forms.Button();
    this.button3 = new System.Windows.Forms.Button();
    this.panel1 = new System.Windows.Forms.Panel();
    this.pictureBox3 = new System.Windows.Forms.PictureBox();
    this.pictureBox2 = new System.Windows.Forms.PictureBox();
    this.timer1 = new System.Windows.Forms.Timer(this.components);
    this.statusBar1 = new System.Windows.Forms.StatusBar();
    this.UserPanel = new System.Windows.Forms.StatusBarPanel();
    this.statusBarPanel1 = new System.Windows.Forms.StatusBarPanel();
    this.panel1.SuspendLayout();
}

```

```

        ((System.ComponentModel.ISupportInitialize)(this.UserPanel)).BeginInit();

        ((System.ComponentModel.ISupportInitialize)(this.statusBarPanel1)).BeginInit();
        this.SuspendLayout();
        //
        // mainMenu1
        //
        this.mainMenu1.MenuItems.AddRange(new
System.Windows.Forms.MenuItem[] {
        this.menuItem1,
        this.menuItem3,
        this.menuItem22,
        this.menuItem7,
        this.menuItem6,
        this.menuItem12,
        this.menuItem15,
        this.menuItem33,
        this.menuItem13});
        //
        // menuItem1
        //
        this.menuItem1.Index = 0;
        this.menuItem1.MenuItems.AddRange(new
System.Windows.Forms.MenuItem[] {
        this.menuItem2,
        this.menuItem29,
        this.menuItem30});
        this.menuItem1.Text = "Application";
        this.menuItem1.Click += new System.EventHandler(this.menuItem1_Click);
        //
        // menuItem2
        //
        this.menuItem2.Index = 0;
        this.menuItem2.Text = "Exit";
        this.menuItem2.Click += new System.EventHandler(this.menuItem2_Click);
        //
        // menuItem29
        //
        this.menuItem29.Index = 1;
        this.menuItem29.Text = "Logout";
        this.menuItem29.Click += new System.EventHandler(this.menuItem29_Click);
        //
        // menuItem30
        //
        this.menuItem30.Index = 2;
        this.menuItem30.Text = "Change Password";
        this.menuItem30.Click += new System.EventHandler(this.menuItem30_Click);
        //
        // menuItem3
        //
        this.menuItem3.Index = 1;
        this.menuItem3.MenuItems.AddRange(new
System.Windows.Forms.MenuItem[]
        {this.menuItem4,
        this.menuItem5});
        this.menuItem3.Text = "Entrees";
        //
        // menuItem4
        //
        this.menuItem4.Index = 0;

```

```

this.menuItem4.Text = "View";
this.menuItem4.Click += new System.EventHandler(this.menuItem4_Click);
//
// menuItem5
//
this.menuItem5.Index = 1;
this.menuItem5.Text = "Add/Edit/Delete";
this.menuItem5.Click += new System.EventHandler(this.menuItem5_Click);
//
// menuItem22
//
this.menuItem22.Index = 2;
this.menuItem22.MenuItems.AddRange(new
System.Windows.Forms.MenuItem[] {
    this.menuItem23,
    this.menuItem24});
this.menuItem22.Text = "Main Course";
//
// menuItem23
//
this.menuItem23.Index = 0;
this.menuItem23.Text = "View";
this.menuItem23.Click += new System.EventHandler(this.menuItem23_Click);
//
// menuItem24
//
this.menuItem24.Index = 1;
this.menuItem24.Text = "Add/Edit/Delete";
this.menuItem24.Click += new System.EventHandler(this.menuItem24_Click);
//
// menuItem7
//
this.menuItem7.Index = 3;
this.menuItem7.MenuItems.AddRange(new
System.Windows.Forms.MenuItem[] {
    this.menuItem10,
    this.menuItem11});
this.menuItem7.Text = "Desserts";
//
// menuItem10
//
this.menuItem10.Index = 0;
this.menuItem10.Text = "View";
this.menuItem10.Click += new System.EventHandler(this.menuItem10_Click);
//
// menuItem11
//
this.menuItem11.Index = 1;
this.menuItem11.Text = "Add/Edit/Delete";
this.menuItem11.Click += new System.EventHandler(this.menuItem11_Click);
//
// menuItem6
//
this.menuItem6.Index = 4;
this.menuItem6.MenuItems.AddRange(new
System.Windows.Forms.MenuItem[] {
    this.menuItem8,
    this.menuItem9});
this.menuItem6.Text = "Drinks";
this.menuItem6.Click += new System.EventHandler(this.menuItem6_Click);

```

```

//
// menuItem8
//
this.menuItem8.Index = 0;
this.menuItem8.Text = "View";
this.menuItem8.Click += new System.EventHandler(this.menuItem8_Click);
//
// menuItem9
//
this.menuItem9.Index = 1;
this.menuItem9.Text = "Add/Edit/Delete";
this.menuItem9.Click += new System.EventHandler(this.menuItem9_Click);
//
// menuItem12
//
this.menuItem12.Index = 5;
this.menuItem12.MenuItems.AddRange(new
System.Windows.Forms.MenuItem[] {
    this.menuItem27,
    this.menuItem28});
this.menuItem12.Text = "Tables";
this.menuItem12.Click += new System.EventHandler(this.menuItem12_Click);
//
// menuItem27
//
this.menuItem27.Index = 0;
this.menuItem27.Text = "View";
this.menuItem27.Click += new System.EventHandler(this.menuItem27_Click);
//
// menuItem28
//
this.menuItem28.Index = 1;
this.menuItem28.Text = "Manage Tables";
this.menuItem28.Click += new System.EventHandler(this.menuItem28_Click);
//
// menuItem15
//
this.menuItem15.Index = 6;
this.menuItem15.MenuItems.AddRange(new
System.Windows.Forms.MenuItem[] {
    this.menuItem25,
    this.menuItem16,
    this.menuItem17,
    this.menuItem18,
    this.menuItem19,
    this.menuItem20,
    this.menuItem21});
this.menuItem15.Text = "Reports";
this.menuItem15.Click += new System.EventHandler(this.menuItem15_Click);
//
// menuItem25
//
this.menuItem25.Index = 0;
this.menuItem25.Text = "Full Menu";
this.menuItem25.Click += new System.EventHandler(this.menuItem25_Click);
//
// menuItem16
//
this.menuItem16.Index = 1;
this.menuItem16.Text = "Entrees";

```

```

this.menuItem16.Click += new System.EventHandler(this.menuItem16_Click);
//
// menuItem17
//
this.menuItem17.Index = 2;
this.menuItem17.Text = "Main Course";
this.menuItem17.Click += new System.EventHandler(this.menuItem17_Click);
//
// menuItem18
//
this.menuItem18.Index = 3;
this.menuItem18.Text = "Drinks";
this.menuItem18.Click += new System.EventHandler(this.menuItem18_Click);
//
// menuItem19
//
this.menuItem19.Index = 4;
this.menuItem19.Text = "Desserts";
this.menuItem19.Click += new System.EventHandler(this.menuItem19_Click);
//
// menuItem20
//
this.menuItem20.Index = 5;
this.menuItem20.Text = "Tables";
this.menuItem20.Click += new System.EventHandler(this.menuItem20_Click);
//
// menuItem21
//
this.menuItem21.Index = 6;
this.menuItem21.MenuItems.AddRange(new
System.Windows.Forms.MenuItem[] {
    this.menuItem31,
    this.menuItem32});
this.menuItem21.Text = "Orders Summary";
//
// menuItem31
//
this.menuItem31.Index = 0;
this.menuItem31.Text = "By Order Id";
this.menuItem31.Click += new System.EventHandler(this.menuItem31_Click);
//
// menuItem32
//
this.menuItem32.Index = 1;
this.menuItem32.Text = "By Table No";
this.menuItem32.Click += new System.EventHandler(this.menuItem32_Click);
//
// menuItem33
//
this.menuItem33.Index = 7;
this.menuItem33.MdiList = true;
this.menuItem33.Text = "Windows";
this.menuItem33.Click += new System.EventHandler(this.menuItem33_Click);
//
// menuItem13
//
this.menuItem13.Index = 8;
this.menuItem13.MenuItems.AddRange(new
System.Windows.Forms.MenuItem[] { this.menuItem14,
this.menuItem26});

```

```

        this.menuItem13.Text = "Help";
        this.menuItem13.Click += new System.EventHandler(this.menuItem13_Click);
        //
        // menuItem14
        //
        this.menuItem14.Index = 0;
        this.menuItem14.Text = "Help ";
        this.menuItem14.Click += new
System.EventHandler(this.menuItem14_Click_1);
        //
        // menuItem26
        //
        this.menuItem26.Index = 1;
        this.menuItem26.Text = "About";
        this.menuItem26.Click += new System.EventHandler(this.menuItem26_Click);
        //
        // textBox1
        //
        this.textBox1.Font = new System.Drawing.Font("Microsoft Sans Serif", 12F,
System.Drawing.FontStyle.Bold, System.Drawing.GraphicsUnit.Point, ((System.Byte)(0)));
        this.textBox1.Location = new System.Drawing.Point(128, 56);
        this.textBox1.Name = "textBox1";
        this.textBox1.PasswordChar = '*';
        this.textBox1.Size = new System.Drawing.Size(160, 26);
        this.textBox1.TabIndex = 1;
        this.textBox1.Text = "";
        this.textBox1.TextChanged += new
System.EventHandler(this.textBox1_TextChanged);
        //
        // textBox2
        //
        this.textBox2.Font = new System.Drawing.Font("Microsoft Sans Serif", 12F,
System.Drawing.FontStyle.Bold, System.Drawing.GraphicsUnit.Point, ((System.Byte)(0)));
        this.textBox2.Location = new System.Drawing.Point(128, 16);
        this.textBox2.Name = "textBox2";
        this.textBox2.Size = new System.Drawing.Size(160, 26);
        this.textBox2.TabIndex = 0;
        this.textBox2.Text = "";
        this.textBox2.TextChanged += new
System.EventHandler(this.textBox2_TextChanged);
        //
        // button1
        //
        this.button1.BackColor = System.Drawing.Color.SlateGray;
        this.button1.Font = new System.Drawing.Font("Microsoft Sans Serif", 8.25F,
System.Drawing.FontStyle.Bold, System.Drawing.GraphicsUnit.Point, ((System.Byte)(0)));
        this.button1.ForeColor = System.Drawing.SystemColors.Control;
        this.button1.Location = new System.Drawing.Point(188, 144);
        this.button1.Name = "button1";
        this.button1.TabIndex = 3;
        this.button1.Text = "Exit";
        this.button1.Click += new System.EventHandler(this.button1_Click_1);
        //
        // label1
        //
        this.label1.Font = new System.Drawing.Font("Microsoft Sans Serif", 8.25F,
System.Drawing.FontStyle.Bold, System.Drawing.GraphicsUnit.Point, ((System.Byte)(0)));
        this.label1.Location = new System.Drawing.Point(16, 56);
        this.label1.Name = "label1";
        this.label1.TabIndex = 4;

```

```

        this.label1.Text = "Password";
        //
        // label2
        //
        this.label2.Font = new System.Drawing.Font("Microsoft Sans Serif", 8.25F,
System.Drawing.FontStyle.Bold, System.Drawing.GraphicsUnit.Point, ((System.Byte)0));
        this.label2.Location = new System.Drawing.Point(16, 16);
        this.label2.Name = "label2";
        this.label2.TabIndex = 5;
        this.label2.Text = "Username";
        //
        // button2
        //
        this.button2.BackColor = System.Drawing.Color.SlateGray;
        this.button2.Font = new System.Drawing.Font("Microsoft Sans Serif", 8.25F,
System.Drawing.FontStyle.Bold, System.Drawing.GraphicsUnit.Point, ((System.Byte)0));
        this.button2.ForeColor = System.Drawing.SystemColors.ControlLightLight;
        this.button2.Location = new System.Drawing.Point(18, 144);
        this.button2.Name = "button2";
        this.button2.TabIndex = 2;
        this.button2.Text = "Login";
        this.button2.Click += new System.EventHandler(this.button2_Click_1);
        //
        // button3
        //
        this.button3.BackColor = System.Drawing.Color.SlateGray;
        this.button3.Font = new System.Drawing.Font("Microsoft Sans Serif", 8.25F,
System.Drawing.FontStyle.Bold, System.Drawing.GraphicsUnit.Point, ((System.Byte)0));
        this.button3.ForeColor = System.Drawing.SystemColors.Control;
        this.button3.Location = new System.Drawing.Point(102, 144);
        this.button3.Name = "button3";
        this.button3.TabIndex = 7;
        this.button3.Text = "Add/Update";
        this.button3.Click += new System.EventHandler(this.button3_Click);
        //
        // panel1
        //
        this.panel1.Anchor =
((System.Windows.Forms.AnchorStyles)((System.Windows.Forms.AnchorStyles.Bottom |
System.Windows.Forms.AnchorStyles.Right)));
        this.panel1.BackColor = System.Drawing.Color.White;
        this.panel1.BorderStyle = System.Windows.Forms.BorderStyle.FixedSingle;
        this.panel1.Controls.Add(this.pictureBox3);
        this.panel1.Controls.Add(this.button2);
        this.panel1.Controls.Add(this.button3);
        this.panel1.Controls.Add(this.textBox2);
        this.panel1.Controls.Add(this.textBox1);
        this.panel1.Controls.Add(this.label1);
        this.panel1.Controls.Add(this.button1);
        this.panel1.Controls.Add(this.label2);
        this.panel1.Controls.Add(this.pictureBox2);
        this.panel1.Location = new System.Drawing.Point(360, 248);
        this.panel1.Name = "panel1";
        this.panel1.Size = new System.Drawing.Size(440, 288);
        this.panel1.TabIndex = 9;
        //
        // pictureBox3
        //

```



```

        this.pictureBox3.Anchor =
((System.Windows.Forms.AnchorStyles)((((System.Windows.Forms.AnchorStyles.Top |
System.Windows.Forms.AnchorStyles.Bottom)
        | System.Windows.Forms.AnchorStyles.Left)
        | System.Windows.Forms.AnchorStyles.Right)));
        this.pictureBox3.BackgroundImage =
((System.Drawing.Image)(resources.GetObject("pictureBox3.BackgroundImage")));
        this.pictureBox3.Location = new System.Drawing.Point(72, 200);
        this.pictureBox3.Name = "pictureBox3";
        this.pictureBox3.Size = new System.Drawing.Size(144, 72);
        this.pictureBox3.TabIndex = 9;
        this.pictureBox3.TabStop = false;
        //
        // pictureBox2
        //
        this.pictureBox2.BackgroundImage =
((System.Drawing.Image)(resources.GetObject("pictureBox2.BackgroundImage")));
        this.pictureBox2.Location = new System.Drawing.Point(248, 0);
        this.pictureBox2.Name = "pictureBox2";
        this.pictureBox2.Size = new System.Drawing.Size(192, 288);
        this.pictureBox2.TabIndex = 8;
        this.pictureBox2.TabStop = false;
        //
        // timer1
        //
        this.timer1.Enabled = true;
        this.timer1.Interval = 1000;
        this.timer1.Tick += new System.EventHandler(this.timer1_Tick_1);
        //
        // statusBar1
        //
        this.statusBar1.Location = new System.Drawing.Point(0, 516);
        this.statusBar1.Name = "statusBar1";
        this.statusBar1.Panels.AddRange(new
System.Windows.Forms.StatusBarPanel[] {

        this.UserPanel,

        this.statusBarPanel1 });
        this.statusBar1.Size = new System.Drawing.Size(806, 22);
        this.statusBar1.TabIndex = 16;
        //
        // UserPanel
        //
        this.UserPanel.Text = "user";
        //
        // statusBarPanel1
        //
        this.statusBarPanel1.Text = "statusBarPanel1";
        //
        // SplashScreen
        //
        this.AcceptButton = this.button2;
        this.AutoScaleBaseSize = new System.Drawing.Size(5, 13);
        this.BackColor = System.Drawing.Color.DarkGray;
        this.ClientSize = new System.Drawing.Size(806, 538);
        this.Controls.Add(this.statusBar1);
        this.Controls.Add(this.panel1);

```

```

        this.FormBorderStyle = System.Windows.Forms.FormBorderStyle.FixedSingle;
        this.Icon = ((System.Drawing.Icon)(resources.GetObject("$this.Icon")));
        this.IsMdiContainer = true;
        this.Menu = this.mainMenu1;
        this.Name = "SplashScreen";
        this.StartPosition = System.Windows.Forms.FormStartPosition.CenterScreen;
        this.Text = "Main";
        this.Load += new System.EventHandler(this.SplashScreen_Load);
        this.panel1.ResumeLayout(false);
        ((System.ComponentModel.ISupportInitialize)(this.UserPanel)).EndInit();
        ((System.ComponentModel.ISupportInitialize)(this.statusBarPanel1)).EndInit();
        this.ResumeLayout(false);
    }
    #endregion
    /// <summary>
    /// The main entry point for the application.
    /// </summary>
    [STAThread]
    static void Main()
    {
        Application.Run(new SplashScreen());
    }
    private void button1_Click(object sender, System.EventArgs e)
    {
    }
    private void menuItem2_Click(object sender, System.EventArgs e)
    {
        this.Close();
    }
    private void button2_Click(object sender, System.EventArgs e)
    {
    }
    private void menuItem5_Click(object sender, System.EventArgs e)
    {
        ShowForm(new Entrees());
    }
    private void menuItem4_Click(object sender, System.EventArgs e)
    {
        ShowForm(new ViewEntr());
    }
    private void menuItem9_Click(object sender, System.EventArgs e)
    {
        ShowForm(new frmdrinks());
    }
    private void menuItem11_Click(object sender, System.EventArgs e)
    {
        ShowForm(new frmdesserts());
    }
    private void menuItem14_Click(object sender, System.EventArgs e)
    {
    }
    private void menuItem13_Click(object sender, System.EventArgs e)
    {
        Help.ShowHelp(this, "C://fiwos//chm//Fountain.chm");
    }
    private void SplashScreen_Load(object sender, System.EventArgs e)
    {
        button3.Enabled = false;
        System.DateTime currentDate = System.DateTime.Now;

```

```

this.Text=currentDate.ToLongDateString();
        menudisable();
    }
private void crystalReportViewer1_Load(object sender, System.EventArgs e)
{
}
private void menuItem12_Click(object sender, System.EventArgs e)
{

}
private void menuItem19_Click(object sender, System.EventArgs e)
{
//
    new Form4().Show();
    ShowReport(new ViewDesserts(),"Desserts");
}
private void menuItem18_Click(object sender, System.EventArgs e)
{
//
    new frmdrinksview().Show();
    ShowReport(new reportdrinks(),"Drinks");
}
private void menuItem16_Click(object sender, System.EventArgs e)
{
    ShowReport(new ViewEntrees(),"Entrees");
}
private void menuItem8_Click(object sender, System.EventArgs e)
{
    ShowForm(new ViewDrinks());
}
private void menuItem23_Click(object sender, System.EventArgs e)
{
    ShowForm( new ViewMain());
}
private void menuItem10_Click(object sender, System.EventArgs e)
{
    ShowForm(new frmviewdesserts());
}
private void menuItem27_Click(object sender, System.EventArgs e)
{
    ShowForm(new frmviewtables());
}
private void menuItem17_Click(object sender, System.EventArgs e)
{
    ShowReport(new ViewMaincourse(),"Main Course");
}
private void menuItem20_Click(object sender, System.EventArgs e)
{
    ShowReport(new ViewTable() ,"Tables");
}
private void menuItem25_Click(object sender, System.EventArgs e)
{
    ShowReport(new FullMenu(), "Full Menu");
}
private void menuItem24_Click(object sender, System.EventArgs e)
{
    ShowForm(new frm mains());
}
private void menuItem28_Click(object sender, System.EventArgs e)
{
    ShowForm(new frmtables());
}
}

```

```

private void menuItem14_Click_1(object sender, System.EventArgs e)
{
    Help.ShowHelp(this,Application.StartupPath + "\\fountain.chm");
}
private void statusBar2_PanelClick(object sender,
System.Windows.Forms.StatusBarPanelClickEventArgs e)
{
}
private void menuItem26_Click(object sender, System.EventArgs e)
{
    new Form5().Show();
}
private void button1_Click_1(object sender, System.EventArgs e)
{
    this.Close();
}
private void button3_Click(object sender, System.EventArgs e)
{
    string flag="";
    string aUserName =
ConfigurationSettings.AppSettings["userName"].ToString();
    string strSQL = "SELECT * FROM Users WHERE UserName = @userName";
    OleDbConnection x = new OleDbConnection().getOLDBConnection();
    OleDbCommand myCmd = new OleDbCommand( strSQL,x);
    OleDbParameter aPara1 = new OleDbParameter("@userName",
OleDbType.VarChar ,255);
    aPara1.Value = textBox2.Text;
    myCmd.Parameters.Add(aPara1);
    OleDbDataReader aReader = null;
    OleDbCommand aCommand= null;
    OleDbConnection aConnection = null;
    try
    {
        x.Open();
        aReader = myCmd.ExecuteReader(CommandBehavior.SingleRow);
        OleDbConnection aDBClass = new OleDbConnection();

        if (!aReader.HasRows)
        {
            flag="1";
            strSQL = "INSERT INTO Users (UserName,UserPassword)
VALUES (" + textBox2.Text + " , " + aDBClass.Encrypt(textBox1.Text)+ " )";
        }
        else
        {
            flag="2";
            strSQL = "UPDATE Users SET UserPassword = " +
aDBClass.Encrypt(textBox1.Text)+ " WHERE UserName = " + textBox2.Text + " ";
        }
        aReader.Close();
        x.Close();
        aConnection = aDBClass.getOLDBConnection();
        aCommand= new OleDbCommand( strSQL,aConnection);
        aConnection.Open();
        int i = aCommand.ExecuteNonQuery();
        if (flag.Equals("1"))
        {
            MessageBox.Show("User Add successfull.");
        }
    }
}

```

```

        else
        {
            MessageBox.Show("Password change successfull.");
        }
    }
    catch (Exception ez)
    {
        System.Diagnostics.Debug.Write(ez.Message);
    }
    finally
    {
        aConnection.Close();
        if(aCommand != null)
        {
            aCommand.Dispose();
        }
        if(aReader != null)
        {
            aReader.Close();
            aReader = null;
        }
        button1.Enabled = true;
        button2.Enabled = true;
        button3.Enabled = false;
        textBox1.Text = null;
        textBox2.Text = null;
    }
}
private void textBox1_TextChanged(object sender, System.EventArgs e)
{
}
private void textBox2_TextChanged(object sender, System.EventArgs e)
{
}
private void button2_Click_1(object sender, System.EventArgs e)
{
    if (doLogin())
    {
        panel1.Visible = false;
        menuenable();
        //MessageBox.Show("Welcome\t" + textBox2.Text);
        System.DateTime currentDate = System.DateTime.Now;
        statusBar1.Text = "User : " + textBox2.Text + " \t Login Time : " +
currentDate.ToString("dd/MM/yyyy HH:mm:ss");
    }
    else
    {
        textBox1.Text = "";
        MessageBox.Show("Invalid login. Pleas try again!!!");
    }
}
private void menuItem1_Click(object sender, System.EventArgs e)
{
}
private void menuItem29_Click(object sender, System.EventArgs e)
{
    foreach(Form aForm in this.MdiChildren)
    {
        aForm.Close();
    }
}

```

```

    }
    panel1.Visible = true;
    menudisable();
    button1.Enabled = false;
    button3.Enabled = false;
    textBox1.Text = null;
    textBox2.Text = null;
}
private void menuItem30_Click(object sender, System.EventArgs e)
{
    panel1.Visible = true;
    button3.Enabled = true;
    button2.Enabled = false;
    button1.Enabled = false;
    textBox1.Text = null;
    textBox2.Text = null;
}
private void ShowReport(ReportDocument inReport, string inReportName)
{
    CrystalDecisions.Shared.TableLogOnInfo aCryTableInfo ;
    foreach (CrystalDecisions.CrystalReports.Engine.Table aCryTable in
inReport.Database.Tables)
    {
        aCryTableInfo = aCryTable.LogOnInfo;
        aCryTableInfo.ConnectionInfo.ServerName =
ConfigurationSettings.AppSettings["DataSource"].ToString();
        aCryTableInfo.ConnectionInfo.UserID = "";
        aCryTableInfo.ConnectionInfo.Password = "";
        aCryTable.ApplyLogOnInfo(aCryTableInfo);
    }
    Form aForm = new frmReportViewer(inReport,inReportName);
    aForm.MdiParent=this;
    aForm.Show();
}
private bool doLogin()
{
    bool flag1;
    string text1 = "SELECT * FROM Users WHERE UserName = @userName
AND UserPassword = @Password";
    OleDbConnection connection1 = new OleDbConnection().getOLDBConnection();
    OleDbCommand command1 = new OleDbCommand(text1, connection1);
    OleDbParameter parameter1 = new OleDbParameter("@userName",
OleDbType.VarChar, 0xff);
    OleDbConnection connection2 = new OleDbConnection();
    parameter1.Value = this.textBox2.Text;
    OleDbParameter parameter2 = new OleDbParameter("@Password",
OleDbType.VarChar, 0xff);
    parameter2.Value = connection2.Encrypt(this.textBox1.Text);
    command1.Parameters.Add(parameter1);
    command1.Parameters.Add(parameter2);
    OleDbDataReader reader1 = null;
    try
    {
        connection1.Open();
        reader1 = command1.ExecuteReader(CommandBehavior.SingleRow);
        flag1 = reader1.HasRows;
    }
    catch (Exception)
    {
        flag1 = false;
    }
}

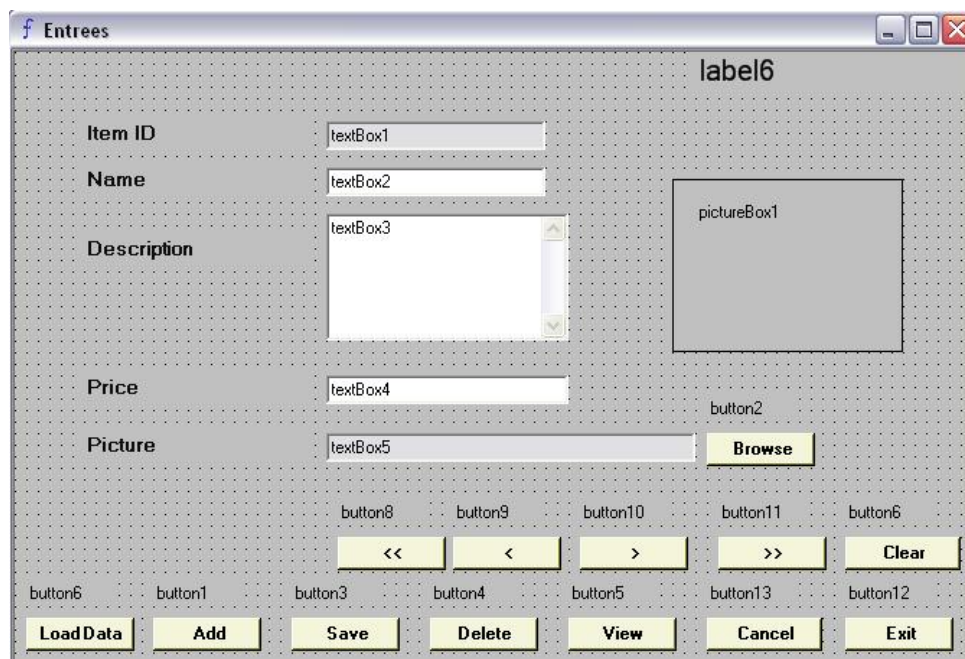
```

```

    }
    finally
    {
        connection1.Close();
        if (reader1 != null)
        {
            reader1.Close();
            reader1 = null;
        }
    }
    return flag1;
}
private void menuItem31_Click(object sender, System.EventArgs e)
{
    ShowReport(new Byorderid(),"Order Summary");
}
private void menuItem32_Click(object sender, System.EventArgs e)
{
    ShowReport(new Bytableno(),"Order Summary");
}
private void timer1_Tick_1(object sender, System.EventArgs e)
{
    System.DateTime currentDate = System.DateTime.Now;
    this.Text=currentDate.ToLongDateString()+"\t"+currentDate.ToLongTimeString();
}
private void ShowForm(Form inForm)
{
    inForm.MdiParent = this;
    inForm.Show();
}
private void menuItem6_Click(object sender, System.EventArgs e)
{
}
private void menuItem33_Click(object sender, System.EventArgs e)
{
}
private void menuItem15_Click(object sender, System.EventArgs e)
{
}
}
}
}

```

Entrees.cs



```
using System;
using System.Drawing;
using System.Collections;
using System.ComponentModel;
using System.Windows.Forms;
using System.Data.OleDb;
using System.Data;
using System.IO;
```

```
namespace WindowsApplication5
```

```
{
    /// <summary>
    /// Summary description for Entrees.
    /// </summary>
    public class Entrees : System.Windows.Forms.Form
    {
        DataSet ds=null;
        private System.Windows.Forms.TextBox textBox1;
        private System.Windows.Forms.TextBox textBox2;
        private System.Windows.Forms.TextBox textBox3;
        private System.Windows.Forms.TextBox textBox4;
        private System.Windows.Forms.TextBox textBox5;
        private System.Windows.Forms.Label label1;
        private System.Windows.Forms.Label label2;
        private System.Windows.Forms.Label label3;
        private System.Windows.Forms.Label label4;
        private System.Windows.Forms.Label label5;
        private System.Windows.Forms.OpenFileDialog openFileDialog1;
        private System.Windows.Forms.Button button2;
        private System.Windows.Forms.PictureBox pictureBox1;
        private System.Windows.Forms.Button button8;
        private System.Windows.Forms.Button button9;
        private System.Windows.Forms.Button button10;
        private System.Windows.Forms.Button button11;
        private System.Windows.Forms.ToolTip toolTip1;
```



```

private System.Windows.Forms.Label label6;
private System.Windows.Forms.Button button12;
private System.Windows.Forms.Button button7;
private System.Windows.Forms.Button button6;
private System.Windows.Forms.Button button5;
private System.Windows.Forms.Button button4;
private System.Windows.Forms.Button button3;
private System.Windows.Forms.Button button1;
private System.Windows.Forms.Button button13;
private System.Windows.Forms.ErrorProvider errorProvider1;
private System.ComponentModel.IContainer components;

public Entrees()
{
    InitializeComponent();
    // TODO: Add any constructor code after InitializeComponent call
    //
}
protected override void Dispose( bool disposing )
{
    if( disposing )
    {
        if(components != null)
        {
            components.Dispose();
        }
    }
    base.Dispose( disposing );
}
public void loaddata()
{
    navigationenable();
    textBox1.Text = null;
    textBox1.DataBindings.Clear();
    textBox2.DataBindings.Clear();
    textBox3.DataBindings.Clear();
    textBox4.DataBindings.Clear();
    textBox5.DataBindings.Clear();
    button3.Enabled = true;
    button4.Enabled = true;
    button1.Enabled = false;
    string strCommand = "SELECT * FROM Entrees";
    OleDbDataAdapter adapter = new OleDbDataAdapter();
    OleDbConnection x = new DBConnection().getOLDBConnection();
    adapter.SelectCommand = new OleDbCommand(strCommand, x);
    ds = new DataSet();
    adapter.Fill( ds, "Entrees");
    textBox1.DataBindings.Add("Text",ds,"Entrees.ID");
    textBox2.DataBindings.Add("Text",ds,"Entrees.Name");
    textBox3.DataBindings.Add("Text",ds,"Entrees.Description");
    textBox4.DataBindings.Add("Text",ds,"Entrees.Price");
    string t=textBox5.Text.Replace("\\","/");
    Byte[] byteBLOBData = new Byte[0];
    byteBLOBData = (Byte[])(ds.Tables[0].Rows[0]["Picture"]);
    MemoryStream stmBLOBData = new MemoryStream(byteBLOBData);
    pictureBox1.Image= Image.FromStream(stmBLOBData);
    button7.Enabled = false ;
}
public void navigationdisable()

```

```

        {button8.Enabled = false ;
          button9.Enabled = false;
          button10.Enabled = false;
          button11.Enabled = false;

        }

private void entryclear()
{
    textBox1.Text = "";
    textBox2.Text = "";
    textBox3.Text = "";
    textBox4.Text = "";
    textBox5.Text = "";
    pictureBox1.Image = null;
}

public void navigationenable()
{
    button8.Enabled = true ;
    button9.Enabled = true ;
    button10.Enabled = true;
    button11.Enabled = true;

}

public void LoadItemID()
{
    int x=0;
    string id="";
    string strDSN
=System.Configuration.ConfigurationSettings.AppSettings["DataSource"].ToString();//Provider=Microsoft
.Jet.OLEDB.4.0;Data Source=C:\\fiwos\\fiwos.mdb";
    string strSQL = "Select ID From Entrees";
    OleDbConnection cn = new OleDbConnection(strDSN);
    cn.Open();
    OleDbCommand cmd = new OleDbCommand(strSQL,cn);
    OleDbDataReader reader = cmd.ExecuteReader();
    while(reader.Read())
    {
        id= reader["ID"].ToString();

    }
    if(id.Equals("") || id.Equals(null))
    {
        id="0";
    }
    x=Convert.ToInt32(id.ToString());
    ++x;

    textBox1.Text="" +x;
    reader.Close();
    cn.Close();
}

#region Windows Form Designer generated code
/// <summary>
/// Required method for Designer support - do not modify
/// the contents of this method with the code editor.
/// </summary>
private void InitializeComponent()
{
    this.components = new System.ComponentModel.Container();

```

```

        System.Configuration.AppSettingsReader configurationAppSettings = new
System.Configuration.AppSettingsReader();
        System.Resources.ResourceManager resources = new
System.Resources.ResourceManager(typeof(Entrees));
        this.textBox1 = new System.Windows.Forms.TextBox();
        this.textBox2 = new System.Windows.Forms.TextBox();
        this.textBox3 = new System.Windows.Forms.TextBox();
        this.textBox4 = new System.Windows.Forms.TextBox();
        this.textBox5 = new System.Windows.Forms.TextBox();
        this.label1 = new System.Windows.Forms.Label();
        this.label2 = new System.Windows.Forms.Label();
        this.label3 = new System.Windows.Forms.Label();
        this.label4 = new System.Windows.Forms.Label();
        this.label5 = new System.Windows.Forms.Label();
        this.openFileDialog1 = new System.Windows.Forms.OpenFileDialog();
        this.button2 = new System.Windows.Forms.Button();
        this.pictureBox1 = new System.Windows.Forms.PictureBox();
        this.button8 = new System.Windows.Forms.Button();
        this.button9 = new System.Windows.Forms.Button();
        this.button10 = new System.Windows.Forms.Button();
        this.button11 = new System.Windows.Forms.Button();
        this.toolTip1 = new System.Windows.Forms.ToolTip(this.components);
        this.button7 = new System.Windows.Forms.Button();
        this.button6 = new System.Windows.Forms.Button();
        this.button5 = new System.Windows.Forms.Button();
        this.button4 = new System.Windows.Forms.Button();
        this.button3 = new System.Windows.Forms.Button();
        this.button1 = new System.Windows.Forms.Button();
        this.button13 = new System.Windows.Forms.Button();
        this.label6 = new System.Windows.Forms.Label();
        this.button12 = new System.Windows.Forms.Button();
        this.errorProvider1 = new System.Windows.Forms.ErrorProvider();
        this.SuspendLayout();
        //
        // textBox1
        //
        this.textBox1.Location = new System.Drawing.Point(216, 48);
        this.textBox1.Name = "textBox1";
        this.textBox1.ReadOnly = true;
        this.textBox1.Size = new System.Drawing.Size(152, 20);
        this.textBox1.TabIndex = 0;
        this.textBox1.Text = "";
        this.toolTip1.SetToolTip(this.textBox1, "Auto Number");
        this.textBox1.TextChanged += new
System.EventHandler(this.textBox1_TextChanged);
        //
        // textBox2
        //
        this.textBox2.AcceptsReturn =
((bool)(configurationAppSettings.GetValue("textBox2.AcceptsReturn", typeof(bool))));
        this.textBox2.Location = new System.Drawing.Point(216, 80);
        this.textBox2.Name = "textBox2";
        this.textBox2.Size = new System.Drawing.Size(152, 20);
        this.textBox2.TabIndex = 1;
        this.textBox2.Text = "";
        this.toolTip1.SetToolTip(this.textBox2, "Type the Name of the Entree");
        this.textBox2.TextChanged += new
System.EventHandler(this.textBox2_TextChanged);
        //
        // textBox3

```

```

//
this.textBox3.Location = new System.Drawing.Point(216, 112);
this.textBox3.Multiline = true;
this.textBox3.Name = "textBox3";
this.textBox3.ScrollBars = System.Windows.Forms.ScrollBars.Both;
this.textBox3.Size = new System.Drawing.Size(168, 88);
this.textBox3.TabIndex = 2;
this.textBox3.Text = "";
this.toolTip1.SetToolTip(this.textBox3, "Description upto 255 characters");
this.textBox3.TextChanged += new
System.EventHandler(this.textBox3_TextChanged);
//
// textBox4
//
this.textBox4.Location = new System.Drawing.Point(216, 224);
this.textBox4.Name = "textBox4";
this.textBox4.Size = new System.Drawing.Size(168, 20);
this.textBox4.TabIndex = 3;
this.textBox4.Text = "";
this.toolTip1.SetToolTip(this.textBox4, "Enter the price ");
this.textBox4.LostFocus += new
System.EventHandler(this.textBox4_LostFocus);
//
// textBox5
//
this.textBox5.Location = new System.Drawing.Point(216, 264);
this.textBox5.Name = "textBox5";
this.textBox5.ReadOnly = true;
this.textBox5.Size = new System.Drawing.Size(256, 20);
this.textBox5.TabIndex = 4;
this.textBox5.Text = "";
//
// label1
//
this.label1.Font = new System.Drawing.Font("Microsoft Sans Serif", 9.75F,
System.Drawing.FontStyle.Bold, System.Drawing.GraphicsUnit.Point, ((System.Byte)(0)));
this.label1.ForeColor = System.Drawing.SystemColors.ActiveCaptionText;
this.label1.Location = new System.Drawing.Point(48, 48);
this.label1.Name = "label1";
this.label1.Size = new System.Drawing.Size(160, 23);
this.label1.TabIndex = 5;
this.label1.Text = "Item ID";
//
// label2
//
this.label2.Font = new System.Drawing.Font("Microsoft Sans Serif", 9.75F,
System.Drawing.FontStyle.Bold, System.Drawing.GraphicsUnit.Point, ((System.Byte)(0)));
this.label2.ForeColor = System.Drawing.SystemColors.ActiveCaptionText;
this.label2.Location = new System.Drawing.Point(48, 80);
this.label2.Name = "label2";
this.label2.Size = new System.Drawing.Size(160, 23);
this.label2.TabIndex = 6;
this.label2.Text = "Name";
//
// label3
//
this.label3.Font = new System.Drawing.Font("Microsoft Sans Serif", 9.75F,
System.Drawing.FontStyle.Bold, System.Drawing.GraphicsUnit.Point, ((System.Byte)(0)));
this.label3.ForeColor = System.Drawing.SystemColors.ActiveCaptionText;
this.label3.Location = new System.Drawing.Point(48, 128);

```

```

        this.label3.Name = "label3";
        this.label3.Size = new System.Drawing.Size(160, 23);
        this.label3.TabIndex = 7;
        this.label3.Text = "Description";
        //
        // label4
        //
        this.label4.Font = new System.Drawing.Font("Microsoft Sans Serif", 9.75F,
System.Drawing.FontStyle.Bold, System.Drawing.GraphicsUnit.Point, ((System.Byte)(0)));
        this.label4.ForeColor = System.Drawing.SystemColors.ActiveCaptionText;
        this.label4.Location = new System.Drawing.Point(48, 224);
        this.label4.Name = "label4";
        this.label4.Size = new System.Drawing.Size(160, 23);
        this.label4.TabIndex = 8;
        this.label4.Text = "Price";
        //
        // label5
        //
        this.label5.Font = new System.Drawing.Font("Microsoft Sans Serif", 9.75F,
System.Drawing.FontStyle.Bold, System.Drawing.GraphicsUnit.Point, ((System.Byte)(0)));
        this.label5.ForeColor = System.Drawing.SystemColors.ActiveCaptionText;
        this.label5.Location = new System.Drawing.Point(48, 264);
        this.label5.Name = "label5";
        this.label5.Size = new System.Drawing.Size(160, 23);
        this.label5.TabIndex = 9;
        this.label5.Text = "Picture";
        //
        // button2
        //
        this.button2.BackColor = System.Drawing.Color.Beige;
        this.button2.Font = new System.Drawing.Font("Microsoft Sans Serif", 8.25F,
System.Drawing.FontStyle.Bold, System.Drawing.GraphicsUnit.Point, ((System.Byte)(0)));
        this.button2.Location = new System.Drawing.Point(480, 264);
        this.button2.Name = "button2";
        this.button2.TabIndex = 11;
        this.button2.Text = "Browse";
        this.toolTip1.SetToolTip(this.button2, "Browse the image");
        this.button2.Click += new System.EventHandler(this.button2_Click);
        //
        // pictureBox1
        //
        this.pictureBox1.Location = new System.Drawing.Point(456, 88);
        this.pictureBox1.Name = "pictureBox1";
        this.pictureBox1.Size = new System.Drawing.Size(160, 120);
        this.pictureBox1.SizeMode =
System.Windows.Forms.PictureBoxSizeMode.StretchImage;
        this.pictureBox1.TabIndex = 17;
        this.pictureBox1.TabStop = false;
        //
        // button8
        //
        this.button8.BackColor = System.Drawing.Color.Beige;
        this.button8.Font = new System.Drawing.Font("Microsoft Sans Serif", 8.25F,
System.Drawing.FontStyle.Bold, System.Drawing.GraphicsUnit.Point, ((System.Byte)(0)));
        this.button8.Location = new System.Drawing.Point(216, 304);
        this.button8.Name = "button8";
        this.button8.TabIndex = 20;
        this.button8.Text = "<<";
        this.toolTip1.SetToolTip(this.button8, "First Record");
        this.button8.Click += new System.EventHandler(this.button8_Click);

```

```

//
// button9
//
this.button9.BackColor = System.Drawing.Color.Beige;
this.button9.Font = new System.Drawing.Font("Microsoft Sans Serif", 8.25F,
System.Drawing.FontStyle.Bold, System.Drawing.GraphicsUnit.Point, ((System.Byte)0));
this.button9.Location = new System.Drawing.Point(296, 304);
this.button9.Name = "button9";
this.button9.TabIndex = 21;
this.button9.Text = "<";
this.toolTip1.SetToolTip(this.button9, "Previous");
this.button9.Click += new System.EventHandler(this.button9_Click);
//
// button10
//
this.button10.BackColor = System.Drawing.Color.Beige;
this.button10.Font = new System.Drawing.Font("Microsoft Sans Serif", 8.25F,
System.Drawing.FontStyle.Bold, System.Drawing.GraphicsUnit.Point, ((System.Byte)0));
this.button10.Location = new System.Drawing.Point(384, 304);
this.button10.Name = "button10";
this.button10.TabIndex = 22;
this.button10.Text = ">";
this.toolTip1.SetToolTip(this.button10, "Next");
this.button10.Click += new System.EventHandler(this.button10_Click_1);
//
// button11
//
this.button11.BackColor = System.Drawing.Color.Beige;
this.button11.Font = new System.Drawing.Font("Microsoft Sans Serif", 8.25F,
System.Drawing.FontStyle.Bold, System.Drawing.GraphicsUnit.Point, ((System.Byte)0));
this.button11.Location = new System.Drawing.Point(480, 304);
this.button11.Name = "button11";
this.button11.TabIndex = 23;
this.button11.Text = ">>";
this.toolTip1.SetToolTip(this.button11, "Last Record");
this.button11.Click += new System.EventHandler(this.button11_Click);
//
// button7
//
this.button7.BackColor = System.Drawing.Color.Beige;
this.button7.Font = new System.Drawing.Font("Microsoft Sans Serif", 8.25F,
System.Drawing.FontStyle.Bold, System.Drawing.GraphicsUnit.Point, ((System.Byte)0));
this.button7.Location = new System.Drawing.Point(8, 352);
this.button7.Name = "button7";
this.button7.TabIndex = 19;
this.button7.Text = "Load Data";
this.toolTip1.SetToolTip(this.button7, "Load all records");
this.button7.Click += new System.EventHandler(this.button7_Click);
//
// button6
//
this.button6.BackColor = System.Drawing.Color.Beige;
this.button6.Font = new System.Drawing.Font("Microsoft Sans Serif", 8.25F,
System.Drawing.FontStyle.Bold, System.Drawing.GraphicsUnit.Point, ((System.Byte)0));
this.button6.Location = new System.Drawing.Point(568, 304);
this.button6.Name = "button6";
this.button6.Size = new System.Drawing.Size(80, 23);
this.button6.TabIndex = 15;
this.button6.Text = "Clear";
this.toolTip1.SetToolTip(this.button6, "Clear all");

```

```

        this.button6.Click += new System.EventHandler(this.button6_Click);
        //
        // button5
        //
        this.button5.BackColor = System.Drawing.Color.Beige;
        this.button5.Font = new System.Drawing.Font("Microsoft Sans Serif", 8.25F,
System.Drawing.FontStyle.Bold, System.Drawing.GraphicsUnit.Point, ((System.Byte)(0)));
        this.button5.Location = new System.Drawing.Point(384, 352);
        this.button5.Name = "button5";
        this.button5.TabIndex = 14;
        this.button5.Text = "View";
        this.toolTip1.SetToolTip(this.button5, "Quick view of all data");
        this.button5.Click += new System.EventHandler(this.button5_Click);
        //
        // button4
        //
        this.button4.BackColor = System.Drawing.Color.Beige;
        this.button4.Font = new System.Drawing.Font("Microsoft Sans Serif", 8.25F,
System.Drawing.FontStyle.Bold, System.Drawing.GraphicsUnit.Point, ((System.Byte)(0)));
        this.button4.Location = new System.Drawing.Point(288, 352);
        this.button4.Name = "button4";
        this.button4.TabIndex = 13;
        this.button4.Text = "Delete";
        this.toolTip1.SetToolTip(this.button4, "Delete the selected Entree");
        this.button4.Click += new System.EventHandler(this.button4_Click);
        //
        // button3
        //
        this.button3.BackColor = System.Drawing.Color.Beige;
        this.button3.Font = new System.Drawing.Font("Microsoft Sans Serif", 8.25F,
System.Drawing.FontStyle.Bold, System.Drawing.GraphicsUnit.Point, ((System.Byte)(0)));
        this.button3.Location = new System.Drawing.Point(192, 352);
        this.button3.Name = "button3";
        this.button3.TabIndex = 12;
        this.button3.Text = "Save";
        this.toolTip1.SetToolTip(this.button3, "Update the selected Entree ");
        this.button3.Click += new System.EventHandler(this.button3_Click);
        //
        // button1
        //
        this.button1.BackColor = System.Drawing.Color.Beige;
        this.button1.Font = new System.Drawing.Font("Microsoft Sans Serif", 8.25F,
System.Drawing.FontStyle.Bold, System.Drawing.GraphicsUnit.Point, ((System.Byte)(0)));
        this.button1.Location = new System.Drawing.Point(96, 352);
        this.button1.Name = "button1";
        this.button1.TabIndex = 10;
        this.button1.Text = "Add";
        this.toolTip1.SetToolTip(this.button1, "Add new Entree ");
        this.button1.Click += new System.EventHandler(this.button1_Click);
        //
        // button13
        //
        this.button13.BackColor = System.Drawing.Color.Beige;
        this.button13.Font = new System.Drawing.Font("Microsoft Sans Serif", 8.25F,
System.Drawing.FontStyle.Bold, System.Drawing.GraphicsUnit.Point, ((System.Byte)(0)));
        this.button13.Location = new System.Drawing.Point(480, 352);
        this.button13.Name = "button13";
        this.button13.Size = new System.Drawing.Size(80, 23);
        this.button13.TabIndex = 26;
        this.button13.Text = "Cancel";

```

```

        this.toolTip1.SetToolTip(this.button13, "Clear all");
        this.button13.Click += new System.EventHandler(this.button13_Click);
        //
        // label6
        //
        this.label6.Font = new System.Drawing.Font("Microsoft Sans Serif", 15F,
System.Drawing.FontStyle.Regular, System.Drawing.GraphicsUnit.Point, ((System.Byte)(0)));
        this.label6.Location = new System.Drawing.Point(472, 0);
        this.label6.Name = "label6";
        this.label6.Size = new System.Drawing.Size(192, 32);
        this.label6.TabIndex = 25;
        this.label6.Text = "Entrees";
        //
        // button12
        //
        this.button12.BackColor = System.Drawing.Color.Beige;
        this.button12.Font = new System.Drawing.Font("Microsoft Sans Serif", 8.25F,
System.Drawing.FontStyle.Bold, System.Drawing.GraphicsUnit.Point, ((System.Byte)(0)));
        this.button12.Location = new System.Drawing.Point(576, 352);
        this.button12.Name = "button12";
        this.button12.TabIndex = 24;
        this.button12.Text = "Exit";
        this.button12.Click += new System.EventHandler(this.button12_Click);
        //
        // errorProvider1
        //
        this.errorProvider1.ContainerControl = this;
        //
        // Entrees
        //
        this.AutoScale = false;
        this.AutoScaleBaseSize = new System.Drawing.Size(5, 13);
        this.BackColor = System.Drawing.Color.Silver;
        this.ClientSize = new System.Drawing.Size(664, 396);
        this.Controls.Add(this.button13);
        this.Controls.Add(this.label6);
        this.Controls.Add(this.button12);
        this.Controls.Add(this.button11);
        this.Controls.Add(this.button10);
        this.Controls.Add(this.button9);
        this.Controls.Add(this.button8);
        this.Controls.Add(this.button7);
        this.Controls.Add(this.pictureBox1);
        this.Controls.Add(this.button6);
        this.Controls.Add(this.button5);
        this.Controls.Add(this.button4);
        this.Controls.Add(this.button3);
        this.Controls.Add(this.button2);
        this.Controls.Add(this.button1);
        this.Controls.Add(this.label5);
        this.Controls.Add(this.label4);
        this.Controls.Add(this.label3);
        this.Controls.Add(this.label2);
        this.Controls.Add(this.label1);
        this.Controls.Add(this.textBox5);
        this.Controls.Add(this.textBox4);
        this.Controls.Add(this.textBox3);
        this.Controls.Add(this.textBox2);
        this.Controls.Add(this.textBox1);
        this.FormBorderStyle = System.Windows.Forms.FormBorderStyle.Fixed3D;

```



```

        this.Icon = ((System.Drawing.Icon)(resources.GetObject("$this.Icon")));
        this.Name = "Entrees";
        this.Text = "Entrees";
        this.Load += new System.EventHandler(this.Entrees_Load);
        this.ResumeLayout(false);
    }
#endregion
private void Entrees_Load(object sender, System.EventArgs e)
{
    navigationdisable();
    textBox3.Enabled = false;
    textBox4.Enabled = false ;
    button2.Enabled = true;
    LoadItemID();
    button8.Enabled = false;
    button3.Enabled = false;
    button4.Enabled = false;
}
private void button1_Click(object sender, System.EventArgs e)
{
    textBox3.Enabled = false;
    textBox4.Enabled = false;
    button7.Enabled = true;
    button5.Enabled = true;
    navigationenable();
    button6.Enabled =true;
    double d=0;
    try
    {
        d = Convert.ToDouble(textBox4.Text);
        string itemid = textBox1.Text;
        string name = textBox2.Text;
        string description = textBox3.Text;
        string price = textBox4.Text;
        string imgURL = textBox5.Text;
        if(!imgURL.Equals("") && File.Exists(textBox5.Text))
        {
            imgURL=textBox5.Text;
        }
        else
        {
            imgURL=Application.StartupPath + "\\default.bmp";
        }
        FileStream aStream = new FileStream(imgURL,FileMode.OpenOrCreate
,FileAccess.Read);
        byte[] aByteArray = new byte[aStream.Length] ;
        aStream.Read(aByteArray,0,System.Convert.ToInt32(aStream.Length));
        aStream.Close();
        double pricex =Convert.ToDouble(price);
        string strSQL = "insert into Entrees(ID,Name,Description,Price,Picture)
values( '"+itemid+"', '"+name+"', '"+description+"', '"+pricex+"', @Picture)";
        OleDbConnection x = new DBConnection().getOLDBConnection();
        OleDbCommand myCmd = new OleDbCommand( strSQL,x);
        OleDbParameter aPara = new
OleDbParameter("@Picture",OleDbType.Binary);
        aPara.Value = aByteArray;
        myCmd.Parameters.Add(aPara);
        try
        {
            x.Open();

```



```

    }
    private void button7_Click(object sender, System.EventArgs e)
    {
        loaddata();
    }
    private void button10_Click(object sender, System.EventArgs e)
    {
        this.BindingContext[this.ds, "Entrees"].Position =
        this.BindingContext[this.ds, "Entrees"].Position + 1;
        string t=textBox5.Text.Replace("\\", "/");
        pictureBox1.Image =
        new Bitmap(t);
    }
    private void button9_Click(object sender, System.EventArgs e)
    {
        this.BindingContext[this.ds, "Entrees"].Position =
        this.BindingContext[this.ds, "Entrees"].Position - 1;
        Byte[] byteBLOBData = new Byte[0];
        byteBLOBData = (Byte[])(ds.Tables[0].Rows[this.BindingContext[this.ds,
"Entrees"].Position][["Picture"]]);
        if(byteBLOBData.Length>0)
        {
            MemoryStream stmBLOBData = new
MemoryStream(byteBLOBData);
            pictureBox1.Image= Image.FromStream(stmBLOBData);
        }
    }
    private void button10_Click_1(object sender, System.EventArgs e)
    {
        this.BindingContext[this.ds, "Entrees"].Position =
        this.BindingContext[this.ds, "Entrees"].Position + 1;
        Byte[] byteBLOBData = new Byte[0];
        byteBLOBData = (Byte[])(ds.Tables[0].Rows[this.BindingContext[this.ds,
"Entrees"].Position][["Picture"]]);
        if(byteBLOBData.Length>0)
        {
            MemoryStream stmBLOBData = new
MemoryStream(byteBLOBData);
            pictureBox1.Image= Image.FromStream(stmBLOBData);
        }
    }
    private void button8_Click(object sender, System.EventArgs e)
    {
        this.BindingContext[this.ds, "Entrees"].Position = 0;
        string t=textBox5.Text.Replace("\\", "/");
        Byte[] byteBLOBData = new Byte[0];
        byteBLOBData = (Byte[])(ds.Tables[0].Rows[this.BindingContext[this.ds,
"Entrees"].Position][["Picture"]]);
        if(byteBLOBData.Length>0)
        {
            MemoryStream stmBLOBData = new
MemoryStream(byteBLOBData);
            pictureBox1.Image= Image.FromStream(stmBLOBData);
        }
    }
    private void button11_Click(object sender, System.EventArgs e)
    {
        this.BindingContext[this.ds, "Entrees"].Position =

```

```

        this.BindingContext[this.ds, "Entrees"].Count - 1;
string t=textBox5.Text.Replace(@"\", "");
Byte[] byteBLOBData = new Byte[0];
byteBLOBData = (Byte[])(ds.Tables[0].Rows[this.BindingContext[this.ds,
"Entrees"].Position][["Picture"]]);
if(byteBLOBData.Length>0)
{
    MemoryStream stmBLOBData = new
MemoryStream(byteBLOBData);
    pictureBox1.Image= Image.FromStream(stmBLOBData);
}

}

private void button4_Click(object sender, System.EventArgs e)
{
    button7.Enabled =true;
    button6.Enabled = true;
int itemid=(int)Convert.ToInt32(textBox1.Text);
OleDbConnection x = new DBConnection().getOLDBConnection();
string strSQL ="delete from Entrees Where ID= "+itemid+"";
OleDbConnection delentr = new DBConnection().getOLDBConnection();
OleDbCommand myCmd = new OleDbCommand( strSQL, delentr );
try
{
    delentr.Open();
    myCmd.ExecuteNonQuery();

}
catch (Exception ez)
{
    Console.WriteLine(">>>>>>>>>>>>"+ez.ToString());
}
finally
{
    delentr.Close();
}
entryclear();
button7.Enabled = true;
button4.Enabled = false;
loaddata();

}

private void textBox2_TextChanged(object sender, System.EventArgs e)
{
    button7.Enabled = false;
    textBox3.Enabled = true;

}

private void button12_Click(object sender, System.EventArgs e)
{
    this.Dispose(true);
}

private void textBox1_TextChanged(object sender, System.EventArgs e)
{

}

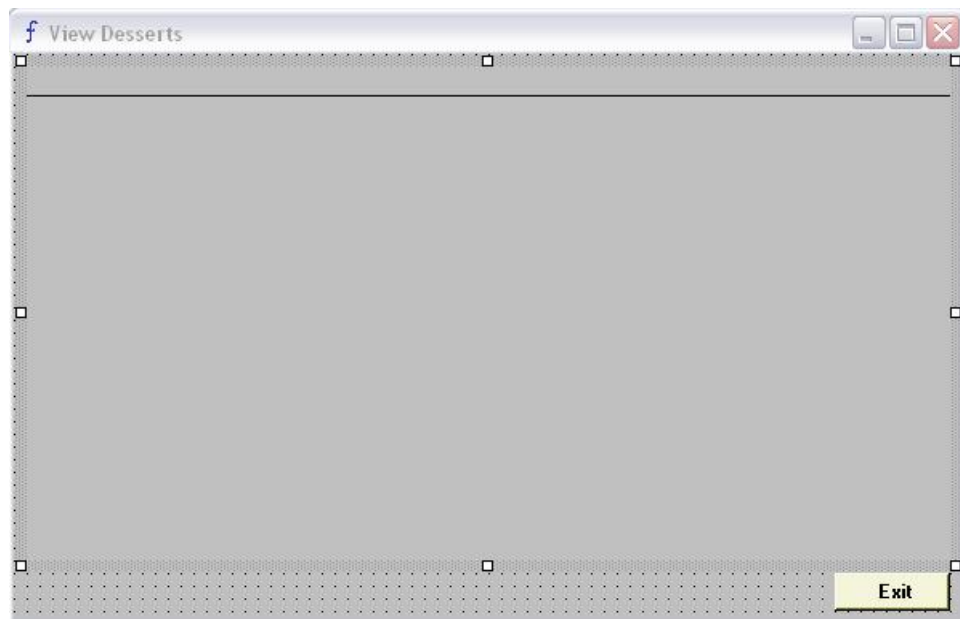
private void comboBox1_SelectedIndexChanged(object sender, System.EventArgs e)
{

}
}

```

```
private void textBox3_TextChanged(object sender, System.EventArgs e)
{
    textBox4.Enabled = true;
}
private void textBox4_LostFocus(object sender, System.EventArgs e)
{
    try
    {
        double d = Convert.ToDouble(textBox4.Text);
    }
    catch(Exception f)
    {
        MessageBox.Show("Please enter valid price..!");
    }
}
private void button13_Click(object sender, System.EventArgs e)
{
    loaddata();
    button6.Enabled = true;
}
}
```

Frmviewdesserts.cs



```
using System;
using System.Drawing;
using System.Collections;
using System.ComponentModel;
using System.Windows.Forms;
using System.Data.OleDb;
using System.Data;
namespace WindowsApplication5
{
    /// <summary>
    /// Summary description for Form6.
    /// </summary>
    public class frmviewdesserts : System.Windows.Forms.Form
    {
        private System.Windows.Forms.DataGrid dataGrid1;
        private System.Windows.Forms.Button button1;
        /// <summary>
        /// Required designer variable.
        /// </summary>
        private System.ComponentModel.Container components = null;
        public frmviewdesserts()
        {
            //
            // Required for Windows Form Designer support
            //
            InitializeComponent();
            //
            // TODO: Add any constructor code after InitializeComponent call
            //
        }
        /// <summary>
        /// Clean up any resources being used.
        /// </summary>
        protected override void Dispose( bool disposing )
        {
            if( disposing )
            {
```

```

        if(components != null)
        {
            components.Dispose();
        }
    }
    base.Dispose( disposing );
}
#region Windows Form Designer generated code
/// <summary>
/// Required method for Designer support - do not modify
/// the contents of this method with the code editor.
/// </summary>
private void InitializeComponent()
{
    System.Resources.ResourceManager resources = new
System.Resources.ResourceManager(typeof(frmviewdesserts));
    this.dataGrid1 = new System.Windows.Forms.DataGrid();
    this.button1 = new System.Windows.Forms.Button();
    ((System.ComponentModel.ISupportInitialize)(this.dataGrid1)).BeginInit();
    this.SuspendLayout();
    this.dataGrid1.AllowDrop = true;
    this.dataGrid1.Anchor =
((System.Windows.Forms.AnchorStyles)(((System.Windows.Forms.AnchorStyles.Top |
System.Windows.Forms.AnchorStyles.Bottom)
    | System.Windows.Forms.AnchorStyles.Left)
    | System.Windows.Forms.AnchorStyles.Right)));
    this.dataGrid1.BackgroundColor = System.Drawing.Color.Silver;
    this.dataGrid1.BorderStyle = System.Windows.Forms.BorderStyle.None;
    this.dataGrid1.DataMember = "";
    this.dataGrid1.HeaderForeColor = System.Drawing.SystemColors.ControlText;
    this.dataGrid1.Location = new System.Drawing.Point(8, 8);
    this.dataGrid1.Name = "dataGrid1";
    this.dataGrid1.Size = new System.Drawing.Size(576, 312);
    this.dataGrid1.TabIndex = 0;
    this.dataGrid1.Navigate += new
System.Windows.Forms.NavigateEventHandler(this.dataGrid1_Navigate);
    //
    // button1
    //
    this.button1.Anchor =
((System.Windows.Forms.AnchorStyles)((System.Windows.Forms.AnchorStyles.Bottom |
System.Windows.Forms.AnchorStyles.Right)));
    this.button1.BackColor = System.Drawing.Color.Beige;
    this.button1.Font = new System.Drawing.Font("Microsoft Sans Serif", 8.25F,
System.Drawing.FontStyle.Bold, System.Drawing.GraphicsUnit.Point, ((System.Byte)(0)));
    this.button1.Location = new System.Drawing.Point(512, 328);
    this.button1.Name = "button1";
    this.button1.Size = new System.Drawing.Size(72, 24);
    this.button1.TabIndex = 2;
    this.button1.Text = "Exit";
    this.button1.Click += new System.EventHandler(this.button1_Click);
    //
    // frmviewdesserts
    //
    this.AutoScaleBaseSize = new System.Drawing.Size(5, 13);
    this.BackColor = System.Drawing.Color.Silver;
    this.ClientSize = new System.Drawing.Size(592, 358);
    this.Controls.Add(this.button1);
    this.Controls.Add(this.dataGrid1);
    this.Icon = ((System.Drawing.Icon)(resources.GetObject("$this.Icon")));
}

```

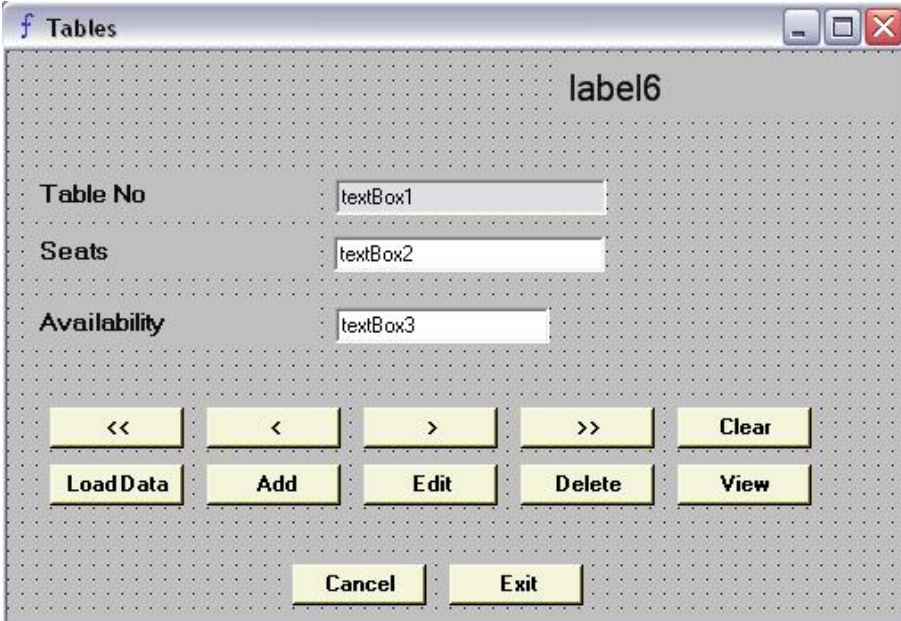


```

        this.Name = "frmviewdesserts";
        this.Text = "View Desserts";
        this.Load += new System.EventHandler(this.frmviewdesserts_Load);
        ((System.ComponentModel.ISupportInitialize)(this.dataGrid1)).EndInit();
        this.ResumeLayout(false);
    }
#endregion
private void frmviewdesserts_Load(object sender, System.EventArgs e)
{
    string strCommand = "SELECT ID,Name,Description,Price FROM Desserts";
    OleDbDataAdapter da = new OleDbDataAdapter();
    OleDbConnection x = new DBConnection().getOLDBConnection();
    da.SelectCommand = new OleDbCommand(strCommand, x);
    DataSet ds = new DataSet();
    da.Fill(ds, "Desserts");
    dataGrid1.DataSource = ds.Tables["Desserts"].DefaultView ;
}
private void dataGrid1_Navigate(object sender,
System.Windows.Forms.NavigateEventArgs ne)
{
}
private void button1_Click(object sender, System.EventArgs e)
{
    this.Dispose();
}
}
}
}

```

Frmtables.cs



```
using System;
using System.Drawing;
using System.Collections;
using System.ComponentModel;
using System.Windows.Forms;
using System.Data.OleDb;
using System.Data;
namespace WindowsApplication5
{
    /// <summary>
    /// Summary description for Form6.
    /// </summary>
    public class frmtables : System.Windows.Forms.Form
    {DataSet ds=null;
        private System.Windows.Forms.Button button12;
        private System.Windows.Forms.Button button11;
        private System.Windows.Forms.Button button10;
        private System.Windows.Forms.Button button9;
        private System.Windows.Forms.Button button8;
        private System.Windows.Forms.Button button7;
        private System.Windows.Forms.Button button6;
        private System.Windows.Forms.Button button5;
        private System.Windows.Forms.Button button4;
        private System.Windows.Forms.Button button3;
        private System.Windows.Forms.OpenFileDialog openFileDialog1;
        private System.Windows.Forms.Button button1;
        private System.Windows.Forms.Label label2;
        private System.Windows.Forms.Label label1;
        private System.Windows.Forms.TextBox textBox2;
        private System.Windows.Forms.TextBox textBox1;
        private System.Windows.Forms.TextBox textBox3;
        private System.Windows.Forms.Label label3;
        private System.Windows.Forms.Button button2;
        private System.Windows.Forms.Label label6;
        private System.Windows.Forms.ToolTip toolTip1;
        private System.ComponentModel.IContainer components;
```

```

public frmtables()
{
    //
    // Required for Windows Form Designer support
    //
    InitializeComponent();
    //
    // TODO: Add any constructor code after InitializeComponent call
    //
}
/// <summary>
/// Clean up any resources being used.
/// </summary>
protected override void Dispose( bool disposing )
{
    if( disposing )
    {
        if(components != null)
        {
            components.Dispose();
        }
    }
    base.Dispose( disposing );
}
public void loadtables()
{
    textBox1.DataBindings.Clear();
    textBox2.DataBindings.Clear();
    textBox3.DataBindings.Clear();
    button3.Enabled = true;
    button4.Enabled = true;
    button1.Enabled = false;
    string strCommand = "SELECT * FROM Tables";
    OleDbDataAdapter adapter = new OleDbDataAdapter();
    OleDbConnection x = new DBConnection().getOLDBConnection();
    adapter.SelectCommand = new OleDbCommand(strCommand, x);
    ds = new DataSet();
    adapter.Fill( ds, "Tables");
    textBox1.DataBindings.Add("Text",ds,"Tables.TableNo");
    textBox2.DataBindings.Add("Text",ds,"Tables.Capacity");
    textBox3.DataBindings.Add("Text",ds,"Tables.Status");
}
public void LoadtableID()
{
    int x=0;
    string id="";
    string strDSN
=System.Configuration.ConfigurationSettings.AppSettings["DataSource"].ToString();//Provider=Microsoft.Jet.
OLEDB.4.0;Data Source=C:\\fiwos\\fiwos.mdb";
    string strSQL = "Select TableNo From Tables";
    OleDbConnection cn = new OleDbConnection(strDSN);
    cn.Open();
    OleDbCommand cmd = new OleDbCommand(strSQL,cn);
    OleDbDataReader reader = cmd.ExecuteReader();
    while(reader.Read())
    {
        id= reader["TableNo"].ToString();
    }
    if(id.Equals("") || id.Equals(null))
    {

```

```

        id="0";
    }
    x=Convert.ToInt32(id.ToString());
    ++x;

    textBox1.Text="" +x;
    reader.Close();
    cn.Close();
}
#region Windows Form Designer generated code
/// <summary>
/// Required method for Designer support - do not modify
/// the contents of this method with the code editor.
/// </summary>
private void InitializeComponent()
{
    this.components = new System.ComponentModel.Container();
    System.Resources.ResourceManager resources = new
System.Resources.ResourceManager(typeof(frmtables));
    this.button12 = new System.Windows.Forms.Button();
    this.button11 = new System.Windows.Forms.Button();
    this.button10 = new System.Windows.Forms.Button();
    this.button9 = new System.Windows.Forms.Button();
    this.button8 = new System.Windows.Forms.Button();
    this.button7 = new System.Windows.Forms.Button();
    this.button6 = new System.Windows.Forms.Button();
    this.button5 = new System.Windows.Forms.Button();
    this.button4 = new System.Windows.Forms.Button();
    this.button3 = new System.Windows.Forms.Button();
    this.openFileDialog1 = new System.Windows.Forms.OpenFileDialog();
    this.button1 = new System.Windows.Forms.Button();
    this.label2 = new System.Windows.Forms.Label();
    this.label1 = new System.Windows.Forms.Label();
    this.textBox2 = new System.Windows.Forms.TextBox();
    this.textBox1 = new System.Windows.Forms.TextBox();
    this.textBox3 = new System.Windows.Forms.TextBox();
    this.label3 = new System.Windows.Forms.Label();
    this.button2 = new System.Windows.Forms.Button();
    this.label6 = new System.Windows.Forms.Label();
    this.toolTip1 = new System.Windows.Forms.ToolTip(this.components);
    this.SuspendLayout();
    //
    // button12
    //
    this.button12.BackColor = System.Drawing.Color.Beige;
    this.button12.Font = new System.Drawing.Font("Microsoft Sans Serif", 8.25F,
System.Drawing.FontStyle.Bold, System.Drawing.GraphicsUnit.Point, ((System.Byte)(0)));
    this.button12.Location = new System.Drawing.Point(248, 272);
    this.button12.Name = "button12";
    this.button12.TabIndex = 48;
    this.button12.Text = "Exit";
    this.toolTip1.SetToolTip(this.button12, "Exit ");
    this.button12.Click += new System.EventHandler(this.button12_Click);
    //
    // button11
    //
    this.button11.BackColor = System.Drawing.Color.Beige;
    this.button11.Font = new System.Drawing.Font("Microsoft Sans Serif", 8.25F,
System.Drawing.FontStyle.Bold, System.Drawing.GraphicsUnit.Point, ((System.Byte)(0)));
    this.button11.Location = new System.Drawing.Point(288, 200);

```

```

this.button11.Name = "button11";
this.button11.TabIndex = 47;
this.button11.Text = ">>";
this.toolTip1.SetToolTip(this.button11, "Last Record");
this.button11.Click += new System.EventHandler(this.button11_Click);
//
// button10
//
this.button10.BackColor = System.Drawing.Color.Beige;
this.button10.Font = new System.Drawing.Font("Microsoft Sans Serif", 8.25F,
System.Drawing.FontStyle.Bold, System.Drawing.GraphicsUnit.Point, ((System.Byte)(0)));
this.button10.Location = new System.Drawing.Point(200, 200);
this.button10.Name = "button10";
this.button10.TabIndex = 46;
this.button10.Text = ">";
this.toolTip1.SetToolTip(this.button10, "Next Record");
this.button10.Click += new System.EventHandler(this.button10_Click);
//
// button9
//
this.button9.BackColor = System.Drawing.Color.Beige;
this.button9.Font = new System.Drawing.Font("Microsoft Sans Serif", 8.25F,
System.Drawing.FontStyle.Bold, System.Drawing.GraphicsUnit.Point, ((System.Byte)(0)));
this.button9.Location = new System.Drawing.Point(112, 200);
this.button9.Name = "button9";
this.button9.TabIndex = 45;
this.button9.Text = "<";
this.toolTip1.SetToolTip(this.button9, "Previous Record");
this.button9.Click += new System.EventHandler(this.button9_Click);
//
// button8
//
this.button8.BackColor = System.Drawing.Color.Beige;
this.button8.Font = new System.Drawing.Font("Microsoft Sans Serif", 8.25F,
System.Drawing.FontStyle.Bold, System.Drawing.GraphicsUnit.Point, ((System.Byte)(0)));
this.button8.Location = new System.Drawing.Point(24, 200);
this.button8.Name = "button8";
this.button8.TabIndex = 44;
this.button8.Text = "<<";
this.toolTip1.SetToolTip(this.button8, "First Record");
this.button8.Click += new System.EventHandler(this.button8_Click);
//
// button7
//
this.button7.BackColor = System.Drawing.Color.Beige;
this.button7.Font = new System.Drawing.Font("Microsoft Sans Serif", 8.25F,
System.Drawing.FontStyle.Bold, System.Drawing.GraphicsUnit.Point, ((System.Byte)(0)));
this.button7.Location = new System.Drawing.Point(24, 232);
this.button7.Name = "button7";
this.button7.TabIndex = 43;
this.button7.Text = "Load Data";
this.toolTip1.SetToolTip(this.button7, "Load Table Data");
this.button7.Click += new System.EventHandler(this.button7_Click);
//
// button6
//
this.button6.BackColor = System.Drawing.Color.Beige;
this.button6.Font = new System.Drawing.Font("Microsoft Sans Serif", 8.25F,
System.Drawing.FontStyle.Bold, System.Drawing.GraphicsUnit.Point, ((System.Byte)(0)));
this.button6.Location = new System.Drawing.Point(376, 200);

```

```

this.button6.Name = "button6";
this.button6.TabIndex = 40;
this.button6.Text = "Clear";
this.toolTip1.SetToolTip(this.button6, "Clear Text fields");
this.button6.Click += new System.EventHandler(this.button6_Click_1);
//
// button5
//
this.button5.BackColor = System.Drawing.Color.Beige;
this.button5.Font = new System.Drawing.Font("Microsoft Sans Serif", 8.25F,
System.Drawing.FontStyle.Bold, System.Drawing.GraphicsUnit.Point, ((System.Byte)(0)));
this.button5.Location = new System.Drawing.Point(376, 232);
this.button5.Name = "button5";
this.button5.TabIndex = 39;
this.button5.Text = "View";
this.toolTip1.SetToolTip(this.button5, "Quick View");
this.button5.Click += new System.EventHandler(this.button5_Click_1);
//
// button4
//
this.button4.BackColor = System.Drawing.Color.Beige;
this.button4.Font = new System.Drawing.Font("Microsoft Sans Serif", 8.25F,
System.Drawing.FontStyle.Bold, System.Drawing.GraphicsUnit.Point, ((System.Byte)(0)));
this.button4.Location = new System.Drawing.Point(288, 232);
this.button4.Name = "button4";
this.button4.TabIndex = 38;
this.button4.Text = "Delete";
this.toolTip1.SetToolTip(this.button4, "Delete Selected Table");
this.button4.Click += new System.EventHandler(this.button4_Click);
//
// button3
//
this.button3.BackColor = System.Drawing.Color.Beige;
this.button3.Font = new System.Drawing.Font("Microsoft Sans Serif", 8.25F,
System.Drawing.FontStyle.Bold, System.Drawing.GraphicsUnit.Point, ((System.Byte)(0)));
this.button3.Location = new System.Drawing.Point(200, 232);
this.button3.Name = "button3";
this.button3.TabIndex = 37;
this.button3.Text = "Edit";
this.toolTip1.SetToolTip(this.button3, "Make Changes ");
this.button3.Click += new System.EventHandler(this.button3_Click);
//
// button1
//
this.button1.BackColor = System.Drawing.Color.Beige;
this.button1.Font = new System.Drawing.Font("Microsoft Sans Serif", 8.25F,
System.Drawing.FontStyle.Bold, System.Drawing.GraphicsUnit.Point, ((System.Byte)(0)));
this.button1.Location = new System.Drawing.Point(112, 232);
this.button1.Name = "button1";
this.button1.TabIndex = 35;
this.button1.Text = "Add";
this.toolTip1.SetToolTip(this.button1, "Add new Table");
this.button1.Click += new System.EventHandler(this.button1_Click);
//
// label2
//
this.label2.Font = new System.Drawing.Font("Microsoft Sans Serif", 9.75F,
System.Drawing.FontStyle.Bold, System.Drawing.GraphicsUnit.Point, ((System.Byte)(0)));
this.label2.ForeColor = System.Drawing.SystemColors.ActiveCaptionText;
this.label2.Location = new System.Drawing.Point(16, 104);

```

```

        this.label2.Name = "label2";
        this.label2.Size = new System.Drawing.Size(160, 23);
        this.label2.TabIndex = 31;
        this.label2.Text = "Seats";
        //
        // label1
        //
        this.label1.Font = new System.Drawing.Font("Microsoft Sans Serif", 9.75F,
System.Drawing.FontStyle.Bold, System.Drawing.GraphicsUnit.Point, ((System.Byte)(0)));
        this.label1.ForeColor = System.Drawing.SystemColors.ActiveCaptionText;
        this.label1.Location = new System.Drawing.Point(16, 72);
        this.label1.Name = "label1";
        this.label1.Size = new System.Drawing.Size(160, 23);
        this.label1.TabIndex = 30;
        this.label1.Text = "Table No";
        //
        // textBox2
        //
        this.textBox2.Location = new System.Drawing.Point(183, 104);
        this.textBox2.Name = "textBox2";
        this.textBox2.Size = new System.Drawing.Size(152, 20);
        this.textBox2.TabIndex = 26;
        this.textBox2.Text = "";
        this.toolTip1.SetToolTip(this.textBox2, "No of seats");
        this.textBox2.TextChanged += new
System.EventHandler(this.textBox2_TextChanged);
        //
        // textBox1
        //
        this.textBox1.Location = new System.Drawing.Point(184, 72);
        this.textBox1.Name = "textBox1";
        this.textBox1.ReadOnly = true;
        this.textBox1.Size = new System.Drawing.Size(152, 20);
        this.textBox1.TabIndex = 25;
        this.textBox1.Text = "";
        //
        // textBox3
        //
        this.textBox3.Location = new System.Drawing.Point(184, 144);
        this.textBox3.Name = "textBox3";
        this.textBox3.Size = new System.Drawing.Size(120, 20);
        this.textBox3.TabIndex = 49;
        this.textBox3.Text = "Vacant";
        //
        // label3
        //
        this.label3.Font = new System.Drawing.Font("Microsoft Sans Serif", 9.75F,
System.Drawing.FontStyle.Bold, System.Drawing.GraphicsUnit.Point, ((System.Byte)(0)));
        this.label3.ForeColor = System.Drawing.SystemColors.ActiveCaptionText;
        this.label3.Location = new System.Drawing.Point(16, 144);
        this.label3.Name = "label3";
        this.label3.Size = new System.Drawing.Size(160, 23);
        this.label3.TabIndex = 50;
        this.label3.Text = "Availability";
        //
        // button2
        //
        this.button2.BackColor = System.Drawing.Color.Beige;
        this.button2.Font = new System.Drawing.Font("Microsoft Sans Serif", 8.25F,
System.Drawing.FontStyle.Bold, System.Drawing.GraphicsUnit.Point, ((System.Byte)(0)));

```

```

        this.button2.Location = new System.Drawing.Point(160, 272);
        this.button2.Name = "button2";
        this.button2.RightToLeft = System.Windows.Forms.RightToLeft.Yes;
        this.button2.TabIndex = 51;
        this.button2.Text = "Cancel";
        this.toolTip1.SetToolTip(this.button2, "Cancel changes");
        this.button2.Click += new System.EventHandler(this.button2_Click_1);
        //
        // label6
        //
        this.label6.Font = new System.Drawing.Font("Microsoft Sans Serif", 15F,
System.Drawing.FontStyle.Regular, System.Drawing.GraphicsUnit.Point, ((System.Byte)(0)));
        this.label6.Location = new System.Drawing.Point(312, 8);
        this.label6.Name = "label6";
        this.label6.Size = new System.Drawing.Size(192, 32);
        this.label6.TabIndex = 52;
        this.label6.Text = "Tables";
        //
        // frmtables
        //
        this.AutoScaleBaseSize = new System.Drawing.Size(5, 13);
        this.BackColor = System.Drawing.Color.Silver;
        this.ClientSize = new System.Drawing.Size(504, 320);
        this.Controls.Add(this.label6);
        this.Controls.Add(this.button2);
        this.Controls.Add(this.label3);
        this.Controls.Add(this.textBox3);
        this.Controls.Add(this.textBox2);
        this.Controls.Add(this.textBox1);
        this.Controls.Add(this.button11);
        this.Controls.Add(this.button10);
        this.Controls.Add(this.button9);
        this.Controls.Add(this.button8);
        this.Controls.Add(this.button7);
        this.Controls.Add(this.button6);
        this.Controls.Add(this.button5);
        this.Controls.Add(this.button4);
        this.Controls.Add(this.button3);
        this.Controls.Add(this.button1);
        this.Controls.Add(this.label2);
        this.Controls.Add(this.label1);
        this.Controls.Add(this.button12);
        this.Icon = ((System.Drawing.Icon)(resources.GetObject("$this.Icon")));
        this.Name = "frmtables";
        this.Text = "Tables";
        this.Load += new System.EventHandler(this.Form6_Load);
        this.ResumeLayout(false);
    }
#endregion
private void Form6_Load(object sender, System.EventArgs e)
{
    LoadtableID();
}
private void button8_Click(object sender, System.EventArgs e)
{
    this.BindingContext[this.ds, "Tables"].Position = 0;
}
private void button9_Click(object sender, System.EventArgs e)
{
    this.BindingContext[this.ds, "Tables"].Position =

```



```

        new ViewEntr().ShowDialog();
    }
private void button6_Click(object sender, System.EventArgs e)
{
    textBox2.Text=null;
    LoadtableID();
}
private void button3_Click(object sender, System.EventArgs e)
{
    string avail = textBox3.Text;
    Console.WriteLine(textBox2.Text);
    Console.WriteLine(textBox3.Text);
    Console.WriteLine(textBox4.Text);
    Console.WriteLine(textBox5.Text);
    Console.WriteLine(comboBox1.Text);*/
    int id =(int)Convert.ToInt32(textBox1.Text);
    int seatsx = (int)Convert.ToInt32(textBox2.Text);
    string strSQL ="Update Tables SET
TableNo="+id+",Capacity="+seatsx+",Status= "+avail+" Where TableNo="+id+"";
    OleDbConnection x = new DBConnection().getOLDBConnection();
    OleDbCommand myCmd = new OleDbCommand( strSQL,x);
    try
    {
        x.Open();
        myCmd.ExecuteNonQuery();
    }
    catch (Exception ez)
    {
        Console.WriteLine(">>>>>>>>>>>>"+ez.ToString());
    }
    finally
    {
        x.Close();
    }
    loadtables();
}
private void button4_Click(object sender, System.EventArgs e)
{
    int itemid=(int)Convert.ToInt32(textBox1.Text);
    OleDbConnection x = new DBConnection().getOLDBConnection();
    string strSQL ="delete from Tables Where TableNo= "+itemid+"";
    OleDbConnection delt = new DBConnection().getOLDBConnection();
    OleDbCommand myCmd = new OleDbCommand( strSQL, delt );
    try
    {
        delt.Open();
        myCmd.ExecuteNonQuery();
    }
    catch (Exception ez)
    {
        Console.WriteLine(">>>>>>>>>>>>"+ez.ToString());
    }
    finally
    {
        delt.Close();
    }
    loadtables();
}
private void button6_Click_1(object sender, System.EventArgs e)
{

```

```

        textBox2.Text="";
        textBox3.Text = "Vacant";
        LoadtableID();
        button1.Enabled = true;
        button6.Enabled = true;
    }
    private void button5_Click_1(object sender, System.EventArgs e)
    {
        new frmviewtables().ShowDialog();
    }
    private void textBox2_TextChanged(object sender, System.EventArgs e)
    {
    }
    private void button12_Click(object sender, System.EventArgs e)
    {
        this.Dispose(true);
    }
    private void button2_Click_1(object sender, System.EventArgs e)
    {
        loadtables();
        button6.Enabled = true;
    }
}
}
}

```