

AI Literacy: Principles for Ethical Generative Artificial Intelligence

Dr. Douglas Eacersall

Senior Lecturer (Researcher Development and Applied AI), University of Southern Queensland

To cite this resource: Eacersall, D. (2024). *AI literacy: Principles for ethical generative artificial intelligence*. Human-AI Collaborative Knowledgebase for Education and Research (HACKER).

Generative AI Challenges



Quality of output: Hallucinations, accuracy, referencing, recency.



Data protection: Is the AI storing/using your inputs? Third parties may be able to access your data causing ethical, privacy and authorship issues.



Copyright and intellectual property: Gen AI has been trained on existing data and sometimes copyrighted works (current legal action against AI developers). AI authoring work may lead to plagiarism and authorship disputes.

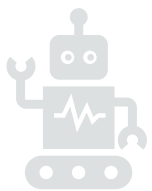
Generative AI Challenges



Transparency: It is not always clear how the AI has formulated its response (blackbox). This creates issues with the transparency required in tasks such as academic research.



Social impacts: These tools raise challenges around social equity in the areas of access, bias and employment.



Access: Dependant on access to tools and subscription/paid versions (paywall).

Bias: AI tools can reflect the bias (e.g. racial, gender, western-centric) contained in their training data.

Employment: Job displacement and increased productivity expectations need to be considered.

Principles for E.T.H.I.C.A.L. Generative AI

To realise the benefits of Generative AI we need AI literacies incorporating principles to evaluate AI tools and apply them ethically and effectively to particular circumstances.

E - Examine existing policy/guidelines (international/national/local)

T - Think about the social impacts (bias, paywall, wellbeing, jobs)

H - Have knowledge of the technology (quality, bias, copyright)

I - Indicate use (transparency, authorship, copyright)

C - Critically assess and revise outputs (quality, authorship, copyright)

A - Access secure and protected versions (copyright, intellectual property, privacy)

L - Look at user agreements (authorship, copyright, intellectual property, privacy)

Applied AI in Education and Research – International Network

Interested in the ethical use of generative AI especially from a research/er and or learning and teaching perspective.

Human-AI Collaborative Knowledgebase for Education and Research (HACKER)

- Optimising AI in your teaching, research and everyday work.
- Collaboration opportunities (sharing of practice, research, joint papers, networking etc.).

Email: Douglas.Eacersall@unisq.edu.au to join the network.