

Surface magnetic fields on two accreting T Tauri stars: CV Cha and CR Cha

G. A. J. Hussain,^{1★} A. Collier Cameron,² M. M. Jardine,² N. Dunstone,² J. Ramirez Velez,³ H. C. Stempels,² J.-F. Donati,⁴ M. Semel,³ G. Aulanier,³ T. Harries,⁵ J. Bouvier,⁶ C. Dougados,⁶ J. Ferreira,⁶ B. D. Carter⁷ and W. A. Lawson⁸

¹*ESO, Karl-Schwarzschild-Strasse 2, 85748 Garching bei München, Germany*

²*SUPA, School of Physics and Astronomy, University of St Andrews, North Haugh, Fife KY16 9SS*

³*LESIA, Observatoire de Paris, Section de Meudon, 92195 Meudon Principal Cedex, France*

⁴*LATT, CNRS-UMR 5572, Obs. Midi-Pyrénées, 14 Av. E. Belin, F-31400 Toulouse, France*

⁵*School of Physics, University of Exeter, Stocker Road, Exeter EX4 4QL*

⁶*LAOG, Laboratoire d'Astrophysique, Obs. de Grenoble, UMR-5571, CNRS, Univ. J Fourier, F-38041 Grenoble, France*

⁷*Faculty of Sciences, University of Southern Queensland, Toowoomba 4350, Australia*

⁸*School of Physical, Environmental and Mathematical Sciences, University of New South Wales, Australian Defence Force Academy, Canberra, ACT 2600, Australia*

Accepted 2009 April 7. Received 2009 March 16; in original form 2008 July 28

ABSTRACT

We have produced brightness and magnetic field maps of the surfaces of CV Cha and CR Cha: two actively accreting G- and K-type T Tauri stars in the Chamaeleon I star-forming cloud with ages of 3–5 Myr. Our magnetic field maps show evidence for strong, complex multipolar fields similar to those obtained for young rapidly rotating main-sequence stars. Brightness maps indicate the presence of dark polar caps and low-latitude spots – these brightness maps are very similar to those obtained for other pre-main-sequence and rapidly rotating main-sequence stars.

Only two other classical T Tauri stars have been studied using similar techniques so far: V2129 Oph and BP Tau. CV Cha and CR Cha show magnetic field patterns that are significantly more complex than those recovered for BP Tau, a fully convective T Tauri star.

We discuss possible reasons for this difference and suggest that the complexity of the stellar magnetic field is related to the convection zone; with more complex fields being found in T Tauri stars with radiative cores (V2129 Oph, CV Cha and CR Cha). However, it is clearly necessary to conduct magnetic field studies of T Tauri star systems, exploring a wide range of stellar parameters in order to establish how they affect magnetic field generation, and thus how these magnetic fields are likely to affect the evolution of T Tauri star systems as they approach the main sequence.

Key words: stars: formation – stars: imaging – stars: individual: CR Cha – stars: individual: CV Cha – stars: magnetic fields – open clusters and associations: individual: Chamaeleon I.

1 INTRODUCTION

Classical T Tauri stars (CTTS) are pre-main-sequence (PMS; ~Myr old) stars that are actively accreting material from their surrounding discs. As CTTS evolve to become zero-age main-sequence (ZAMS) late A- to M-type stars, their circumstellar discs will dissipate and may ultimately condense into planetary systems. At this young stage, CTTS display strong variability on all time-scales at opti-

cal, X-ray and extreme ultraviolet (EUV) wavelengths. Both strong magnetic activity and variable mass accretion from circumstellar discs on to the central stars are the key causes of this variability.

The magnetospheric accretion model successfully explains many observational characteristics of CTTS (Camenzind 1990; Königl 1991; Shu et al. 1994; also see review by Bouvier et al. 2006). In this scenario the magnetosphere of a CTTS truncates the inner edge of its circumstellar disc, material is then channelled along magnetic field lines on to the stellar surface and accretion shocks cause hotspots to form at the site of impact on the stellar surface. There is substantial observational evidence to support this theory: photometry

★E-mail: ghussain@eso.org

confirming the presence of hotspots on stellar surfaces; soft X-ray spectra suggesting accretion shock temperatures and densities; near-infrared (NIR) and far-infrared (FIR)/mm wavelength studies which have detected discs in these systems (see review by Herbst & Mundt 2005).

While magnetospheric accretion models can explain many of the phenomena observed in CTTS systems, in-depth studies suggest that the relatively simple models cannot yet withstand more quantitative tests. For example, a study of *International Ultraviolet Explorer* (IUE) observations of BP Tau found a much stronger correlation between the system's accretion rate and the sizes of hotspots than that predicted by models (Ardila & Basri 2000). Ardila & Basri conclude that realistic stellar magnetic fields should be incorporated into the magnetospheric models.

Strong magnetic fields have been directly detected on a range of CTTS using different methods. One approach is to measure magnetic field strengths by measuring the Zeeman broadening in unpolarized, magnetically sensitive lines (see Johns-Krull, Valenti & Koresko 1999 and references therein). Their measurements show that CTTS have very strong kG magnetic fields, with magnetic pressures that tend to dominate over gas pressures at their photospheres.

Alternatively, magnetic fields can be detected by acquiring high-resolution circularly polarized spectra of magnetically active stars (see Donati et al. 2008a and references therein). If a star's circularly polarized spectra show a definite magnetic field signature, we can obtain a map of its surface magnetic field by acquiring a time-series of circularly polarized profiles covering a full rotation period. Zeeman Doppler imaging (ZDI) techniques are then used to invert these profiles into surface magnetic field maps (Semel 1989; Donati & Collier Cameron 1997; Hussain 2000; Hussain et al. 2000; Donati et al. 2007). Donati et al. (2007, 2008b) have acquired the first detailed surface magnetic field maps of the CTTS, V2129 Oph and BP Tau. Their maps confirm the presence of kG fields measured using intensity profiles. BP Tau, a fully convective CTTS, has a predominantly dipolar field. V2129 Oph, which has a small radiative core appears to have a more complex, predominantly octupolar field.

Coronal extrapolations of these magnetic field maps enable us to model the coronal topology and assess the efficiency with which the star can couple with its accretion disc. Jardine, Gregory & Gregory (2008) use these extrapolations to model the locations of open field lines (where the stellar wind originates) and the closed field lines (which contain the X-ray emitting plasma). They investigate the effect of allowing the disc to be truncated at different radii and note the need to include more complex field topologies in magnetospheric accretion models.

As only two CTTS systems have been mapped to date, more observations are necessary to understand how magnetic activity and accretion processes are affected by different parameters (e.g. temperature, mass, age, accretion state) in T Tauri stars. This is crucial in order to understand how and when accretion finally switches off in T Tauri stars and they become free to spin-up.

We present magnetic field maps of the surfaces of two CTTS in the Chamaeleon I (Cha I) molecular cloud in this paper. In Section 2 we describe the two target stars and their main properties. We provide details of the observations and data reduction procedures used in Section 3. Section 4 is an analysis of the accretion states of both stellar systems. The imaging procedure is described and maps of the surface spots and magnetic fields are presented in Sections 5 and 6, respectively. The implications of our results are discussed and our conclusions summarized in Section 7.

2 CHAMAELEON I STARS: CV Cha AND CR Cha

The Cha I molecular cloud is a relatively small molecular cloud ($M \sim 1000 M_{\odot}$), with a mass of roughly $120 M_{\odot}$ concentrated in young stars (see Bally et al. 2006 for more details). The stellar population of Cha I has a median age of ~ 2 Myr, within a range of < 1 to > 10 Myr suggesting prolonged or multiple star-forming episodes, and is one of the nearest star formation regions ($d \sim 160$ – 165 pc; Wichmann et al. 1998).

2.1 CV Cha

CV Cha (RXJ1112.5–7644, LHA 332–21, SZ 42) is a G8-type star. It is one of the brightest intermediate-mass stars in the Cha I molecular cloud ($V = 10.8$ – 11.0). It also has a relatively short rotation period ($P_{\text{rot}} = 4.4$ d) and is bright in X-rays, suggesting strong magnetic activity levels ($\log L_X = 30.1$; Bouvier et al. 1986; Bary et al. 2008). Moderate levels of accretion, as evidenced by strong emission in its Balmer line profiles ($H\alpha$ equivalent width (EW) ~ 60 – 70 Å), confirm CV Cha's status as a CTTS (Covino et al. 1992; Reipurth, Pedrosa & Lago 1996; Stempels & Piskunov 2003; Bary et al. 2008). The most recent estimate of its temperature by spectroscopic analysis is $T_{\text{eff}} = 5500$ K and $\log g = 4.0$ (Stempels & Piskunov 2003), which agrees with the G8-type classification from photometry. Photometry of CV Cha has yielded the following colours: $1.07 < B - V < 1.10$, $1.40 < V - I < 1.42$ and an extinction of $A_V = 1.67$ (Gauvin & Strom 1992).

Given these values we can estimate the evolutionary status of the system using PMS isochrones from Siess, Dufour & Forestini (2000). As with Donati et al. (2007), we assume that CV Cha's brightest measurement ($m_V = 10.8$) still represents a star that is covered by ~ 20 per cent spot coverage. We therefore take the unspotted brightness of CV Cha to range between $V = 10.6$ and 10.8 . Taking CV Cha's distance to be 160 pc (as estimated for the molecular cloud), we find that CV Cha's absolute brightness is $M_V \sim 2.90$. From PMS evolutionary tracks this corresponds to an age of 5 ± 1 Myr and the mass and radius parameters shown in Table 1.

The varying veiling levels from 0.0 to 0.3 that were measured on CV Cha by Stempels & Piskunov (2003) introduce an uncertainty

Table 1. Effective temperatures, T_{eff} , are from Stempels & Piskunov (2003) and Schegerer et al. (2006); P_{rot} are from Bouvier et al. (1986). PMS evolutionary tracks from Siess et al. (2000) and photometric measurements are used to calculate the stellar masses and radii (see Sections 2.1 and 2.2). M_{core} and R_{core} are the mass and radius of the radiative cores. The errors quoted here account for changing brightness levels in these stars; other potential uncertainties, e.g. in the distances have not been accounted for.

Target	Published parameters values computed using PMS isochrones (Siess et al. 2000)						$M_{\text{core}}(M_{\odot})$	$R_{\text{core}}(R_{\odot})$	Age (Myr)
	T_{eff} (K)	P_{rot} (d)	$M_{*}(M_{\odot})$	$R_{*}(R_{\odot})$	$L_{*}(L_{\odot})$				
CV Cha	5500	4.4	2 ± 0.2	2.5 ± 0.4	7.7 ± 1.5	0.92 ± 0.05	0.75 ± 0.05		5 ± 1
CR Cha	4900	2.3	1.9 ± 0.2	2.5 ± 0.3	3.8 ± 1.1	0.65 ± 0.06	0.57 ± 0.1		3 ± 1

into these measurements corresponding to a photospheric variability of $\Delta V \sim 0.28$. In this case the system's brightness changes to $M_V \sim 3.18$ and therefore a slightly larger age ~ 6 Myr but smaller mass ($1.85 M_\odot$). These uncertainties are reflected in the errors quoted in Table 1.

2.2 CR Cha

CR Cha (LKH α , SZ 6) is a K2-type star with a $T_{\text{eff}} = 4900$ K, of a similar brightness to CV Cha ($m_V = 11.2$) and a shorter rotation period ($P_{\text{rot}} = 2.3$ d) (Bouvier et al. 1986; Schegerer et al. 2006). Like CV Cha it is also a strong emitter in X-rays ($\log L_X = 30.17$; Feigelson et al. 1993; Robrade & Schmitt 2006) and displays moderate accretion levels ($H\alpha \sim -29.5$ – -34 Å; Reipurth et al. 1996; Guenther et al. 2007). Previous estimates of its mass, luminosity and age from D'Antona & Mazzitelli (1994) evolutionary tracks suggest the following: $M_* = 1.2 M_\odot$, $L_* = 3.3 M_\odot$ and $T = 1$ Myr (Natta, Meyer & Beckwith 2000).

As with CV Cha, by assuming an unspotted $m_V = 11.0$, correcting for an extinction of $A_V = 1.37$ (Gauvin & Strom 1992), we find $M_V = 3.63$ – 3.86 (depending on uncertainties in its reported distance). Fitting this to Siess et al.'s (2000) evolutionary tracks we find a higher estimated age (3 ± 1 Myr) and a higher mass than previously calculated (see Table 1). Further uncertainties in the mass and age measurements could be introduced by changing levels of veiling in the system. There are no veiling measurements of CR Cha, but as it accretes less than CV Cha (see Section 4) we assume a smaller veiling variability than that seen on CV Cha. Given veiling levels up to ~ 0.2 , we find that CR Cha's age could vary between 3 and 4 Myr and have a mass ranging between 1.75 and $1.9 M_\odot$. The corresponding uncertainties are reflected in Table 1.

It should also be noted that a source of uncertainty on ages is introduced by using different evolutionary tracks and different measurements. Using the Palla & Stahler (1999) tracks and NIR photometry of the same stars, Luhman (2004) find ages of approximately 1–3 Myr for our two targets. The values reported for CR Cha's reddening appear inconsistent $A_J = 0.00$ (Luhman 2004) compared to $A_V = 1.37$ (Gauvin & Strom 1992). On the Siess et al. (2000) tracks with these NIR measurements, CR Cha is found to be 4.5 Myr and $1.7 M_\odot$ while CV Cha is 4.3 Myr and $2 M_\odot$, which is consistent with the range of values we obtain.

Using the Palla & Stahler (1999) tracks and the optical photometric measurements we use here (in Table 1), the ages of the stars are found to be similar to our measurements, with CR Cha being between 3.5 and 4 Myr and CV Cha between 4.5 and 5 Myr. However, the masses are found to be slightly lower (yet consistent with the uncertainties quoted in Table 1): CR Cha is approximately $1.7 M_\odot$ and CV Cha is about $1.8 M_\odot$. Hence the uncertainties introduced by varying levels of veiling and spot coverage are comparable or to the differences between theoretical PMS tracks.

3 OBSERVATIONS AND DATA REDUCTION

Spectropolarimetric observations were acquired over five nights, from 2006 April 9 to 13, at the Anglo-Australian Observatory (AAO) with an aim to map brightness and magnetic field distributions as well as monitor the accretion states of both stars. We mounted the visitor polarimeter, SemelPol, at the Cassegrain focus of the 3.9-m Anglo-Australian Telescope (AAT), coupled with the

UCLES spectrograph. Further details of the instrument configuration used can be found in Donati & Collier Cameron (1997) and Donati et al. (1999, 2003).

As CV Cha and CR Cha have rotation periods of 4.4 and 2.3 d, respectively, it is necessary to obtain observations evenly spread over a period of at least five nights in order to obtain full phase coverage on both systems. Variable weather conditions adversely affected the second half of the observing run so phase coverage, while in principle sufficient to cover 80 per cent of the surfaces of the two stars, remains incomplete and the signal-to-noise ratio (S/N) of the spectra variable. In total, we obtain 13 Stokes I and V spectra of the photosphere of CV Cha and 10 Stokes I and V spectra of the photosphere of CR Cha with sufficiently high S/N for the subsequent analysis. Table 2 shows a log of the observations used in this paper.

The data were processed using ESPRIT, a data reduction package that optimally extracts both polarized (Stokes V) and unpolarized (Stokes I) spectra (Donati et al. 1997). The wavelength coverage ranges from 4376 to 6820 Å. This encompasses several accretion-sensitive diagnostics (e.g. $H\alpha$, He I) as well as over 3000 photospheric line profiles (some profiles are duplicated due to order overlap).

Doppler imaging and ZDI techniques ideally require spectra with S/N of over 1000 per resolution element to obtain reliable surface maps. In order to boost S/N in our spectra, we use the technique of least-squares deconvolution (LSD; Donati et al. 1997). This technique is similar to a cross-correlation technique. It essentially sums up the signal from thousands of photospheric lines and thus fully exploits the wavelength coverage of echelle spectra. For intensity spectra, LSD assumes that all weak- to medium-strength lines have essentially the same shape and simply scale in depth with the line depth for each line – the line depths are obtained from Vienna Atomic Line Database (VALD) or Kurucz model atmospheres (Kurucz 1993, 2005; Kupka et al. 1999) that match the spectral type of the star and are used to construct a line mask – the observed spectra are then essentially cross-correlated with the line mask constructed for each star.

When applying LSD to non-accreting stars, strong chromospheric lines are masked out when generating LSD profiles as these lines invalidate the assumptions used in LSD. Before applying LSD to these actively accreting stars, we carried out careful checks to ensure that strong accretion-sensitive diagnostics were effectively masked out. The line mask constructed by Stempels & Piskunov (2003) selects absorption lines that are unaffected by emission. We use this to construct a line list to use for LSD. A separate line list was created using the VALD. A comparison of the LSD profiles obtained with the LSD line list from Stempels & Piskunov (2003) and the LSD line list from VALD shows no significant difference in the shape of the LSD profiles obtained.

We reject any input spectra with peak S/N levels of below 30 in our subsequent analysis. Spectra with input peak S/N < 30 result in LSD profiles with shapes and line depths that are inconsistent with the LSD profiles for spectra with higher S/N. The reason for this is likely due to incorrect continuum normalization at low S/N levels. We are confident that the LSD profiles we use here are free of potential contaminants due to line profiles that are sensitive to accretion. The LSD profiles used for the CV Cha imaging analysis presented in this paper were produced using the line lists derived from the earlier study of CV Cha by Stempels & Piskunov (2003). The ones for CR Cha were constructed using the VALD, but omitting the emission-affected regions marked out in the CV Cha line list.

Table 2. Table of observations. Longitude is the central longitude at that particular rotation phase: $l = (1 - \phi)360^\circ$. Phases that were excluded from the final image reconstructions are marked as ‘excluded’.

UT date	MJD	Target	Phase	Longitude ($^\circ$)	S/N (inp/LSD)	Comment
2006 April 9	53834.4322	CV Cha	0.000	0/360	60/2280	Excluded: bootstrap analysis
	53834.4797	CR Cha	0.000	0/360	47/1850	
	53834.5267	CV Cha	0.022	352	51/2040	
	53834.5734	CR Cha	0.042	345	60/2350	
	53834.6216	CV Cha	0.044	344	52/2190	
	53834.6680	CR Cha	0.083	330	50/1768	
2006 April 10	53834.7203	CV Cha	0.066	336	50/1885	Excluded: bootstrap analysis
	53835.3886	CV Cha	0.218	282	54/2230	Excluded: bootstrap analysis
	53835.4352	CR Cha	0.417	210	55/2030	
	53835.4830	CV Cha	0.239	274	44/1260	
	53835.5290	CR Cha	0.457	195	37/910	
	53835.5754	CV Cha	0.260	266	38/1280	
	53835.6756	CV Cha	0.283	258	47/1550	
	53835.7219	CR Cha	0.541	165	33/1112	
	53837.3794	CV Cha	0.670	119	68/2370	
2006 April 12	53837.4254	CR Cha	1.282	258	63/2240	
	53837.4717	CV Cha	0.691	111	72/2760	
	53837.5178	CR Cha	1.322	244	50/1000	
2006 April 13	53838.5409	CV Cha	0.934	24	50/1560	
	53838.5870	CR Cha	1.787	77	47/1716	Excluded: change in accretion state
	53838.6333	CV Cha	0.955	16	58/2220	
	53838.6803	CR Cha	1.827	62	50/1859	Excluded: change in accretion state
	53838.7265	CV Cha	0.977	8	47/1780	

4 ACCRETION DIAGNOSTICS

Several strong accretion-sensitive diagnostics can be used to characterize the accretion states of both stars at this epoch. An analysis of the $H\alpha$, $H\beta$, $He I$ and $Na I D$ line profiles shows that both stars are actively accreting at this epoch. No polarization was detected in the Stokes V diagnostics of these features, presumably due to insufficient S/N.

Figs 1 and 2 show the mean and variance line profiles for these diagnostics in CV Cha and CR Cha, respectively. In these figures, the mean line profiles are the solid black lines and the variance profiles are represented by grey filled in plots. Variances have been scaled by a factor of 10 (and offset by 1.0 for $He I$ and $Na I D$) so that they can be plotted on the same scale as the mean line profiles. $H\alpha$ is strongly in emission for both stars confirming their previous classifications as CTTS. We measure their EWs using the dedicated program in the spectral analysis package `DIPO` (Howarth, Murray & Mills 1994). The two stars’ mean $H\alpha$ EWs are -51 and -25 \AA for CV Cha and CR Cha, respectively; these values are between 5 and 10 \AA lower than previous measurements for both stars (Reipurth et al. 1996; Guenther et al. 2007).

While the mean $H\alpha$ profile for CV Cha is almost symmetric, CR Cha’s $H\alpha$ profile possesses a significant blueshifted component, indicating outflows and winds on this system. The $H\alpha$ variance profiles in both stars show variations that can be separated into three components: the blueshifted component indicates varying winds; the central component is likely due to varying accretion on to the star and the redshifted component indicating inflows on to the star. Further evidence of inflows in CR Cha can be found in its $H\beta$ profile: the mean line profile has a strong asymmetry in its red wing and the greatest variations are also found in the redshifted part of the profile also supporting the presence of inflows.

The $He I$ line profile in CR Cha is in absorption, while in CV Cha it is clearly in emission: further evidence that CV Cha is accreting

more strongly. The $Na I D$ profiles in both stars show evidence of interstellar absorption.

4.1 Variability analysis

The individual $H\alpha$ and $H\beta$ profiles were examined for both stars to evaluate how much their accretion states varied from night-to-night (see Figs 3 and 4). This is also necessary to establish how stable the surface active regions were over the time-span of observations and therefore how reliable the maps are likely to be. We find that CV Cha is significantly variable from night to night and therefore employ a bootstrap analysis to get the final images of this star (see Section 5). There is significant blueshifted emission (likely due to winds) at phases 0.21–0.23, while excess emission and redshifted emission (due to accretion inflows and hotspots) are detected at phases 0.95–0.06.

CR Cha’s Balmer line profiles show less variation from night to night – until the last night (2006 April 13), when their peak strengths increase by 30 per cent compared to previous exposures. In our image reconstructions of CR Cha we examine the effect of omitting the last night’s exposures on the brightness and magnetic field maps. Both inflows and outflows (as indicated by excess redshifted and blueshifted emission) are indicated at phases 0.0–0.040. The last two exposures at the end of the run show how much the star’s accretion state increased. These two exposures, corresponding to phases 0.78 and 0.83 show the strongest emission in both $H\alpha$ and $H\beta$ line profiles.

4.2 Estimating \dot{M}

We can estimate the relative levels of accretion in both stars using the width of the $H\alpha$ profile at 10 per cent of its peak flux, and the empirical relation first advanced by Natta et al. (2004). Herczeg &

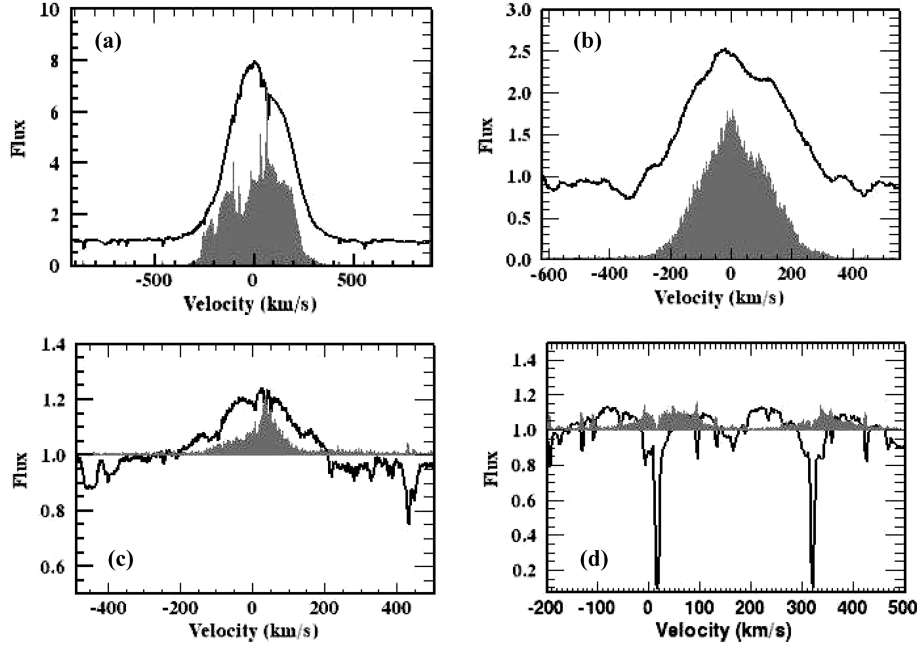


Figure 1. Accretion diagnostics for CV Cha: the solid lines are the mean line profiles for each diagnostic and the grey solid plot represents the variance profile (multiplied by a factor of 10 for clarity). (a) The $H\alpha$ profile and (b) the $H\beta$ profiles are clearly in emission and relatively symmetric in shape; (c) the $He\ I$ profile is in emission and (d) the $Na\ I\ D$ profile shows two narrow absorption features caused by interstellar absorption. The variance profiles for $H\alpha$ and $He\ I$ show a strong changing contribution to the red wing of the line profiles, indicating inflows on to the star.

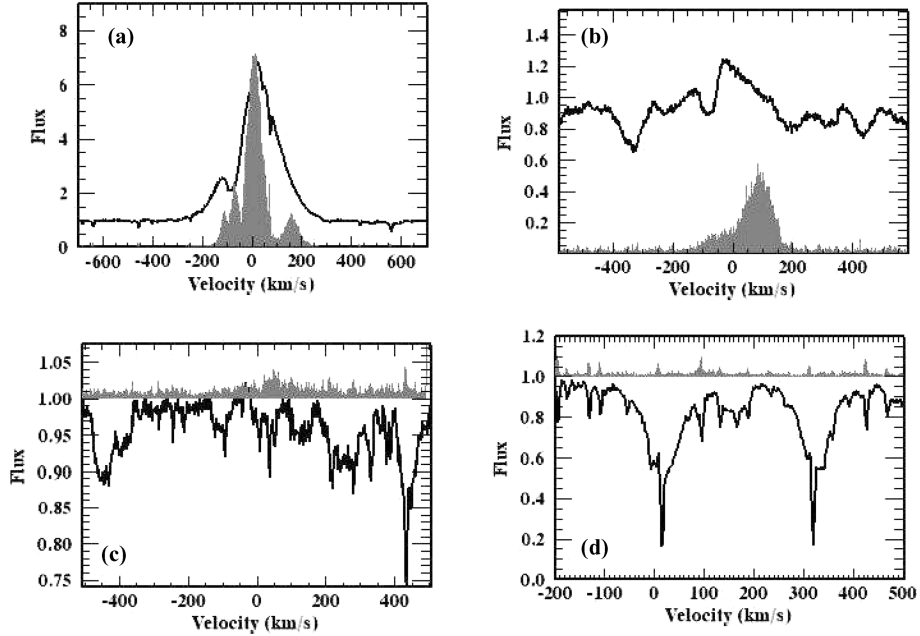


Figure 2. Accretion diagnostics for CR Cha: as in Fig. 1, the solid lines represent the mean profiles and the grey solid plots are the variance profiles for each emission line: (a) $H\alpha$, (b) $H\beta$, (c) $He\ I$ and (d) $Na\ I\ D$. The $H\beta$ profile shows a strong redshifted component in both the mean and variance profiles, indicating inflows. The $H\alpha$ profile also has a redshifted variance component as well as a strong blueshifted contribution to the mean line profile indicating stellar winds. CR Cha is clearly not accreting as strongly as CV Cha as the $He\ I$ diagnostic is in absorption.

Hillenbrand (2008) find that the \dot{M} measured using this method is comparable with that found using $H\alpha$ line profile modelling, with a scatter in \dot{M} of 0.86 dex. The mean $H\alpha$ 10 per cent linewidths we find for CV Cha and CR Cha are 550 and 390 km s^{-1} , respectively. This corresponds to $\log \dot{M}_{\text{acc}}$ values of -7.5 and -9.0 ($M_{\odot} \text{ yr}^{-1}$). Given the uncertainty of 0.86 dex, CV Cha is likely a stronger accretor than CR Cha, but substantial uncertainty remains. The variability

in the $H\alpha$ 10 per cent linewidths was $\pm 35 \text{ km s}^{-1}$ for CV Cha and $\pm 15 \text{ km s}^{-1}$ for CR Cha.

5 BRIGHTNESS IMAGING

Prior to Doppler imaging, we scale all of our LSD intensity profiles to the same EW in order to remove the effects of changing

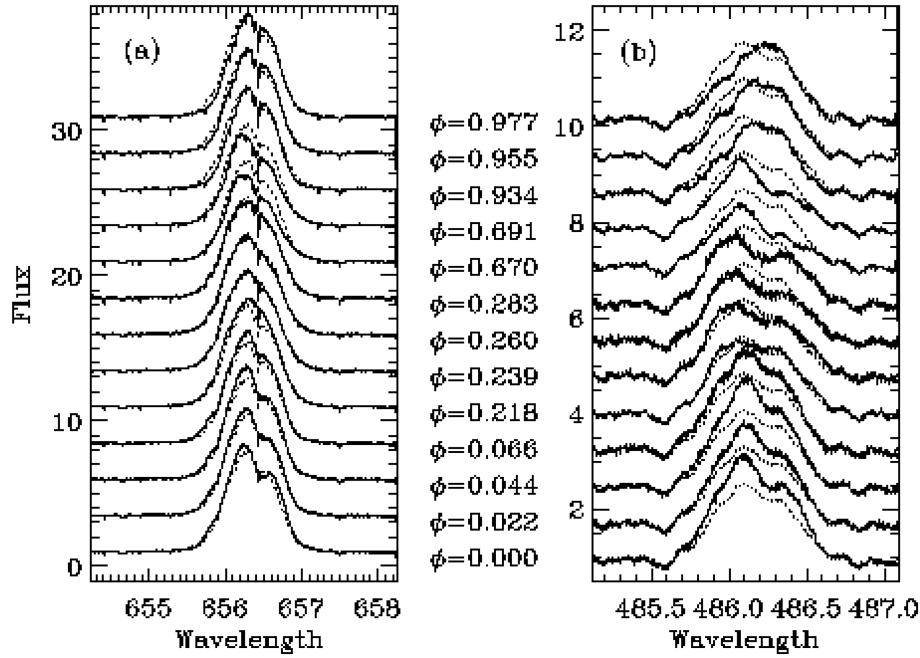


Figure 3. Balmer line profiles for CV Cha. (a) H α line profiles and (b) H β line profiles. The dotted line shows the overplotted mean line profile, to illustrate the line variability from phase to phase more clearly.

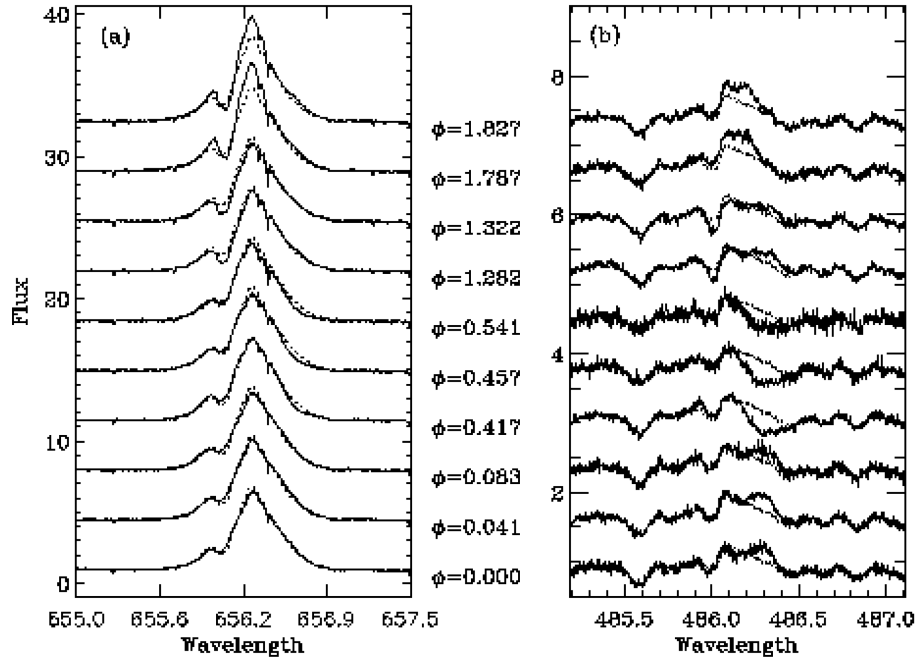


Figure 4. As with Fig. 3 for CR Cha. The last two observations illustrate that the accretion phase of the system increased significantly on the last night.

veiling levels from all of the profiles. Veiling correlates poorly with polarization and profile distortions (Valenti, Johns-Krull & Hatzes 2003; Donati et al. 2007, 2008b). In the absence of a consistent model to describe veiling, it becomes necessary to remove any possible effects due to veiling from the spectra. Furthermore, veiling on CV Cha was found to be low, varying between 0.0 and 0.3 (Stempels & Piskunov 2003) so the effect is expected to be small. There are no published veiling measurements for CR Cha.

We model the distortions in the LSD profiles assuming that they are caused by dark cool spots. It should be noted that there is some ambiguity here: the line deformation in de-veiled profiles is essentially the same, whether the cause is a hotspot or a completely dark spot with a similar area (Unruh, Collier Cameron & Guenther 1998; Unruh et al. 2004). This assumption has also previously found to be reasonable for V2129 Oph (Shevchenko & Herbst 1998; Donati et al. 2007) and BP Tau (Donati et al. 2008b). As we can obtain good

Table 3. Stellar parameters derived from parameter optimization during Doppler imaging.

Target	v_{rad} (km s $^{-1}$)	$v_e \sin i$ (km s $^{-1}$)	Inclination ($^\circ$)
CV Cha	22.7 ± 1.0	25 ± 1	35 ± 10
CR Cha	24.0 ± 1.0	35 ± 1	50 ± 10

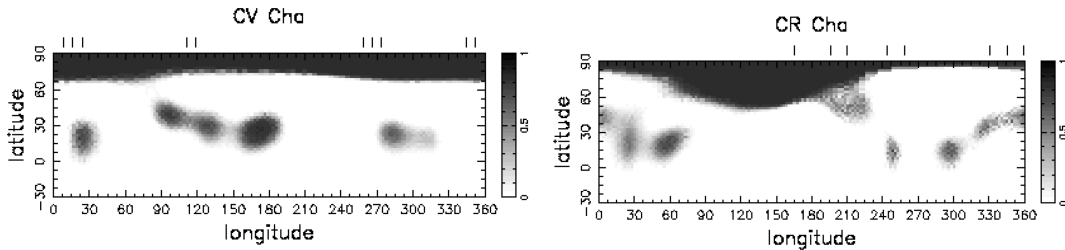
fits to the spectra using this model we also assume that the main causes of distortions and line asymmetries in these LSD profiles are dark spots crossing the projected stellar disc as it rotates.

In order to obtain reliable brightness and magnetic field maps we first need to derive accurate system parameters: v_{rad} , $v_e \sin i$, EW and inclination angle i . The procedure involves reconstructing a series of images using grids of different stellar parameters: the optimum parameters are determined by reducing χ^2 in the brightness imaging code (Table 3). The χ^2 minimization procedure is identical to that used in previous studies (e.g. Barnes et al. 1998). These parameters are then used to reconstruct surface brightness and magnetic field maps.

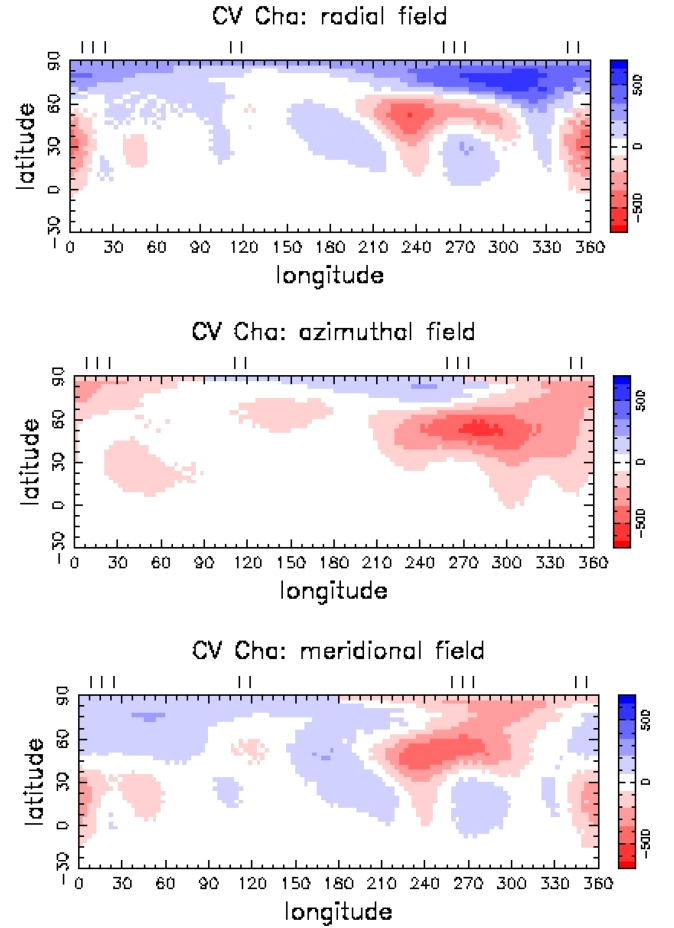
v_{rad} is determined first as it is independent of the other parameters. There is a well-documented dependence between $v_e \sin i$ and EW when evaluated in this manner; e.g. too low a line EW and too high a $v_e \sin i$ value produce a deficit in the flux at the centre of the line profile but an excess in the wings (Collier Cameron & Unruh 1994). EW and $v_e \sin i$ are therefore optimized together. Note that, while EW can be measured independently the $v_e \sin i$ –EW dependence needs to be minimized carefully as together they affect the shape of the model line profile. An error in EW of just a few per cent will introduce artefacts into the resulting Doppler images (see Collier Cameron & Unruh for further details). As the EW has been renormalized, the optimum $v_e \sin i$ we obtain may not be the ‘true’ $v_e \sin i$ value. However, it is instructive to compare this with published measurements to evaluate the effect of removing the veiling contribution from the spectra. While our $v_e \sin i$ value of 25 ± 1 km s $^{-1}$ is a little lower than the 28 km s $^{-1}$ reported by Stempels & Piskunov (2003), it is within their measurement errors.

Once the v_{rad} , $v_e \sin i$ and EW values are measured i and P_{rot} can be estimated in the same way, although as the images are not very sensitive to these parameters, there are much larger uncertainties associated with these two parameters. In the case of CR Cha, χ^2 minimizes at 2.3 d (i.e. the published P_{rot} value). For CV Cha, the optimum P_{rot} values agrees with the published values with an uncertainty of ± 0.2 d, consistent with the error bars on the measurement.

Brightness maps are first obtained using the entire data set: we then explore the effect on the images of omitting data from separate epochs. As stated earlier, there is clear evidence from the H α and H β profiles that the accretion state of both CV Cha and CR Cha appear to change.


Figure 5. Brightness map for CV Cha (left) and CR Cha (right). The tick marks show the phases of observation. The spot groups here have been modelled as dark cool spots.

In order to assess the reliability of these maps and to exclude the most strongly accreting phases (which may introduce artefacts) we employ a bootstrap analysis for CV Cha. We omit three out of the 13 spectra and run the imaging code, measuring the minimum χ^2 achieved after 40 iterations for each possible combination of spectra. We then adopt the combination(s) of spectra that yield the minimum χ^2 after this fixed number of iterations (in a similar procedure to that used for optimizing the system parameters). This approach allows us to improve on the minimized χ^2 by a factor of 2 by leaving out three spectra: spectra 4, 5, 13 – these are marked as excluded in Table 2. The images shown in Figs 5 and 6 show the maps obtained from this cropped 10-spectra data set. The locations, numbers and sizes of spots reconstructed in spot maps from the cropped and uncropped 13-spectra data set are very similar. The


Figure 6. Magnetic field maps for CV Cha: these maps fit the data to a $\chi^2_r = 1.1$.

reduced χ^2 , χ_r^2 , in the map shown here is 2.5; where the number of degrees of freedom is 240 for the CV Cha imaging data set. The only significant advantages to using the cropped data set are that the resulting images provide a better fit to the data ($\chi_r^2 = 2.5$ compared to 3.0), and a small noisy spot feature near 320° longitude is removed. The overall stability of the spots reconstructed in these maps implies that these spot groups are stable and not caused by noise artefacts. We also compare the brightness map obtained at $\chi_r^2 = 2.5$ with maps obtained at $\chi_r^2 = 5$ to check the robustness of our maps and ensure that the maps are not fitting noise. We find that the spot map presented here is essentially unchanged compared to the $\chi^2 = 5$ map: this is a further indication that the spots we reconstruct are genuinely in the data and not artefacts.

As discussed in the previous section, CR Cha's accretion state appears to elevate significantly in the last night, which may affect its surface map. When comparing brightness maps obtained with the full data set and the cropped data set (omitting the last night's spectra) we find the spot patterns agree well but that we can achieve lower χ^2 values with the cropped data set. The map we show here was derived using the cropped data set and the phases excluded are marked in Table 2. All of the spot groups reconstructed for CR Cha are robust, though the spot group between 330° and 360° longitude appears poorly constrained. The reliability of these spots was also tested further by comparing the brightness map obtained at $\chi_r^2 = 2.5$ with maps obtained at $\chi_r^2 = 5$ (as was done for CV Cha) we find that all of the spot groups appear in the less well defined spot map; the only difference is that the feature near 330° – 360° appears less well constrained at $\chi_r^2 = 5$; the number of degrees of freedom in the CR Cha imaging data sets is 248.

We look for correlations between the H α 10 per cent width measurements, the LSD line EWs and the measured spot coverage at each phase of observation to assess whether or not these spots are hot or cold. If the spots reconstructed are hot then one would expect an anticorrelation between the line EW and the spot coverage (as the more veiled the star would be the higher the spot coverage and the weaker the line EW). We find no evidence for correlations between the LSD line EW, the spot coverage in these maps and the H α 10 per cent width values, supporting the assumption that the spots reconstructed here are indeed cool spots.

The fits and residuals corresponding to CV Cha and CR Cha maps are shown in Appendix A (Fig. A1). The brightness maps shown in Fig. 5 produce fits to a reduced χ^2 level, $\chi_r^2 = 2.5$. CV Cha has a large polar cap extending down below 70° latitude and five spots at the mid-to-low latitude regions. CR Cha shows a similar spot pattern to CV Cha, although its polar cap is asymmetric. The spot patterns we find here appear typical for other CTTS, which typically show large polar caps and spots at mid to low latitudes. Recent examples of other stars with similar spot patterns are the PMS stars SU Aur (Unruh et al. 2004), HD 155555 (Hatzes & Kürster 1999; Dunstone et al. 2008) and TWA 6 (Skelly et al. 2008). ZAMS G- and K-type stars also show similar spot patterns, e.g. the α Per G-type dwarf stars: He 520, He 699 (Barnes et al. 1998) and AB Dor (K2V; Collier Cameron & Unruh 1994).

6 SURFACE MAGNETIC FIELD MAPS

We obtain magnetic field maps using LSD Stokes V profiles derived using the same intrinsic line EW as the intensity line profiles used to derive the brightness maps. The ZDI code used is described by Hussain et al. (2000). The strongest magnetic field detections were obtained for CV Cha (the brighter of the two stars) with a

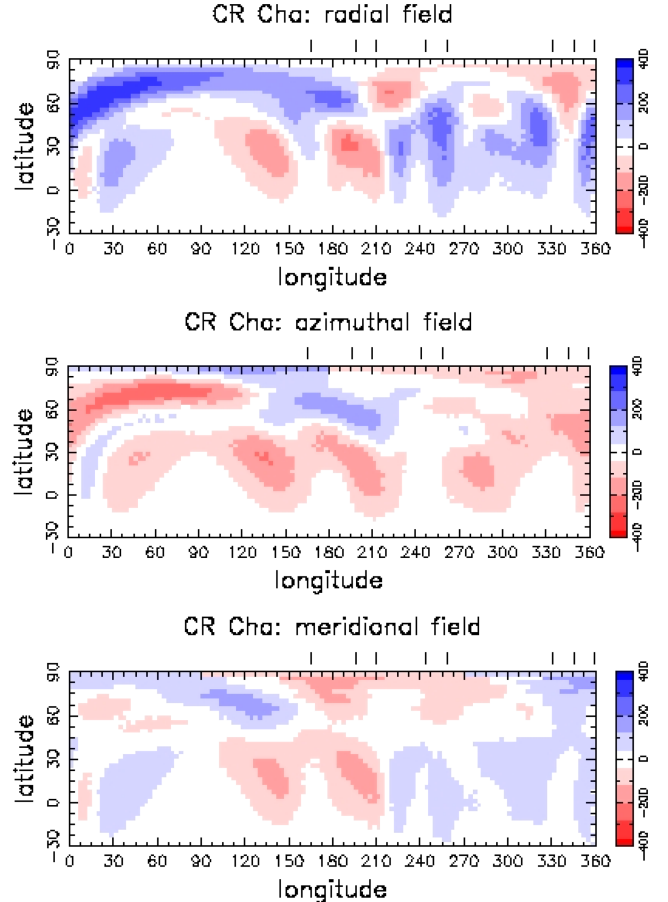


Figure 7. Magnetic field maps for CR Cha: these maps fit the data to a $\chi_r^2 = 1.0$.

false alarm probability, $FAP \sim 10^{-5}$; for CR Cha only marginal detections were obtained with a $FAP \sim 10^{-3}$. The FAP is defined as in Donati et al. (1997) and is based on the reduced χ^2 statistics computed both inside and outside the spectral lines in both the LSD Stokes V profile and the null polarization profile (see Donati et al. 1997 for more details). However, despite this, we find that we can recover robust magnetic field maps (Figs 6 and 7 and A2).

The magnetic field maps obtained here have been derived solely from photospheric line profiles. Donati et al. (2007, 2008b) studied the other two CTTS, V2129 Oph and BP Tau. Their maps are different as they include circularly polarized profile from photospheric lines and accretion-sensitive lines that originate at the base of the accretion funnels; the field of the accreting lines can be mapped using circularly polarized (Stokes V) Ca II line profiles. Unfortunately, the wavelength range of our data does not encompass this diagnostic, and no Stokes V signatures are detected in the other accretion-sensitive diagnostics in our data.

The effect of including the accretion-sensitive diagnostics was explored by Donati et al. (2007) when producing surface magnetic field maps of V2129 Oph. They find that maps obtained from photospheric line profiles alone do accurately reflect the field topology of the non-accreting surface, even if the strong field from the footpoints of accretion funnels cannot be recovered (see fig. 12 of Donati et al. 2007). Hence the complex topologies we recover can be compared reliably with those obtained for other PMS and MS stars.

The magnetic field maps for CV Cha (Fig. 6) show the presence of strong magnetic fields (up to 600 G) covering most of the observable

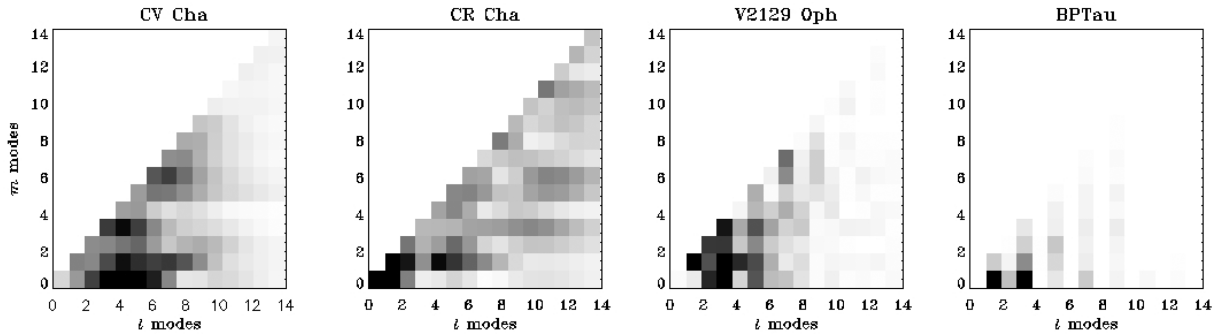


Figure 8. Dominant l, m modes for the radial magnetic field maps of CV Cha, CR Cha, V2129 Oph (Donati et al. 2007) and BP Tau (Donati et al. 2008b). All of the maps used for this analysis were obtained using photospheric line profiles only.

surface. The radial, azimuthal and meridional field maps trace a multipolar field. The field between longitudes 0° and 90° appears significantly weaker than that on the opposite hemisphere. This may be a consequence of poor phase coverage or it may be caused by the presence of hot accretion spots between 0° and 120° that essentially neutralize the magnetic field signatures from this region of the star.¹ The strongest indications of accretion from the Balmer line profiles are near phase 0, which corresponds well with the longitudes at which the magnetic field maps appear to be affected by accretion hotspots. A faint magnetic field feature near 30° longitude appears to be cospatial with the dark cool spot in the brightness map – this may mark the point of impact of an accretion funnel.

The magnetic field maps for CR Cha (Fig. 7) also show strong complex multipolar magnetic field patterns covering the entire observable star. As this star has a higher $v_e \sin i$ value, its maps potentially have better spatial resolution than CV Cha. Unlike CV Cha, CR Cha’s surface seems to be relatively unaffected by accretion. The maximum field obtained is ± 400 G for these maps, i.e. somewhat suppressed compared to CV Cha. This is likely due to CV Cha’s being slightly fainter and its circularly polarized profiles being noisier than those of CV Cha. CV Cha and CR Cha are found to have average magnetic filling factors of 0.30 and 0.10, respectively. Note, however, that these are probably lower in CR Cha due to the lower input S/N of the data (as opposed to reflecting a genuine weaker magnetic field).

7 DISCUSSION

7.1 Surface magnetic field maps of T Tauri stars

Two other CTTS have been imaged using similar Doppler imaging techniques: V2129 Oph and BP Tau (Donati et al. 2007, 2008b). Both of these are younger and less massive than CV Cha and CR Cha: BP Tau ($M = 0.70 M_\odot$, $R = 1.95 R_\odot$, $T_{\text{eff}} = 4055$ K, $P_{\text{rot}} = 7.6$ d, age ~ 1.5 Myr) is fully convective, and V2129 Oph ($M = 1.35 M_\odot$, $R = 2.4 R_\odot$, $T_{\text{eff}} = 4200$ K, $P_{\text{rot}} = 6.53$ d, $v_e \sin i = 15 \text{ km s}^{-1}$, age ~ 2 Myr) has a small radiative core ($M_{\text{core}} \sim 0.1 M_*$ and $R_{\text{core}} \sim 0.2 R_*$, age ~ 2 Myr).

BP Tau shows a simple magnetic field structure, consisting predominantly of a dipole and octupole field component of similar strengths; in particular its azimuthal component is relatively weak. V2129 Oph, on the other hand, shows a more complex field struc-

ture, dominated by an octupole and a much weaker dipole: its azimuthal field component is relatively strong (of comparable strength to the radial field map) in the maps recovered using only photospheric line profiles. The surface magnetic field maps of V2129 Oph obtained using photospheric line profiles only show an azimuthal field strength that is comparable to the radial field. Adding the circularly polarized profiles from the accretion line profiles strengthens the dipole component of the global field but does not alter the topology of the azimuthal field significantly.

If we compare our maps to the V2129 Oph brightness maps and the magnetic field maps obtained using only the LSD photospheric line profiles (i.e. right-hand column of fig. 12 in Donati et al. 2007), we are comparing maps that have been reconstructed with essentially the same technique. As CV Cha and CR Cha have $v_e \sin i$ values that are almost double that of V2129 Oph, their maps could potentially have twice the spatial resolution: the maximum resolution for CV Cha and CR Cha corresponds to $\sim 11^\circ$ and 8° latitude, respectively, while for V2129 Oph it is closer to 20° . However, the poor weather and resulting poor phase coverage actually reduces the maximum spatial resolution of our maps, degrading the CV Cha maps to a similar spatial resolution as V2129 Oph (i.e. $\sim 20^\circ$ latitude). CR Cha maps have slightly better resolution, as evidenced by the smaller spots reconstructed in the brightness maps, but still a factor of 2 worse than the maximum achievable spatial resolution.

A comparison of all three CTTS brightness and magnetic field maps reveals some similarities: all brightness maps show a polar cap with well defined spots at lower, near-equatorial latitudes with radial and azimuthal magnetic field components being of approximately equal strength.

The magnetic field maps also appear similar: V2129 Oph, CV Cha and CR Cha all contain strong azimuthal field of approximately equal strength to the radial field in each map.

7.1.1 Spherical harmonic decomposition of radial fields

A more detailed analysis of these maps can be conducted by decomposing the surface magnetic field maps into their spherical harmonic components. Fig. 8 shows the dominant l, m modes in the radial magnetic field maps of the three radiative CTTS: CV Cha, CR Cha, V2129 Oph, as well as the fully convective CTTS, BP Tau. These l, m modes are essentially a measure of the complexity of the magnetic field distributions in each of these stars. An octupole is at $l = 3$ and the spatial resolution of these maps should correspond to approximately $l = 10$. The grey-scale in each plot has been renormalized so the strongest mode in each plot is black and the weakest modes are white (so the relative strengths of the modes in each star are comparable). In general CV Cha, CR Cha and

¹ The maps of V2129 Oph do show a large accretion spot with a radius of over 15° in latitude (fig. 11 of Donati et al. 2007), in contrast to the smaller filling factors suggested by Valenti & Johns-Krull (2004).

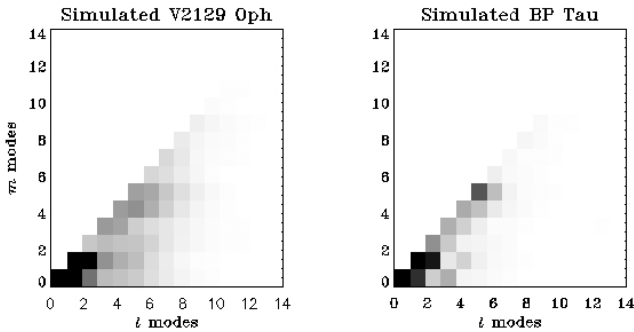


Figure 9. Dominant l, m modes for the simulated radial magnetic fields for V2129 Oph and BP Tau – the input maps used were from CR Cha. Clearly the simulated and reconstructed ZDI V2129 Oph maps show a similar level of complexity, while the simulated BP Tau map is significantly more complex than that obtained using ZDI (cf. with Fig. 8).

V2129 Oph show more complex fields than those reconstructed in the fully convective BP Tau, which has power concentrated in very low l, m modes. BP Tau has its highest power concentrated in low modes $l = 1, 3$ and $m = 0$, while the other CTTS have power in higher l, m modes.

We can quantify the statistical significance of the l, m modes (and thus the complexity of the field) as follows: we produce a series of images omitting the strongest l, m mode combinations and then measure the level of fit with the original data set. If the change in $\chi^2 \geq 3$ then it is judged to be a mode with significant power. The highest modes with power in the CV Cha map at $(l = 4, m = 3)$ and $(l = 7, m = 6)$ have significance levels $\Delta\chi^2 > 4s$; while those for the CR Cha map at $(l = 8, m = 8)$, $(l = 10, m = 3)$ and $(l = 11, m = 11)$ all have $\Delta\chi^2 \sim 3$.

There is a possibility that the differences between the CV Cha and CR Cha images compared to the V2129 Oph and BP Tau images are solely caused by differences in the stellar $v_e \sin i$. We investigate that suggestion here. Higher $v_e \sin i$ values enable higher spatial resolution in Doppler images and therefore higher l, m modes to be detected in the surface maps: the optimal spatial resolution attainable with this instrumental set-up for CR Cha is 8° in latitude, for CV Cha this is 12° and for BP Tau it is approximately 27° . In practice, the actual spatial resolution achieved in the images presented here is considerably worse due to the poor phase coverage.

In order to investigate the significance of the complexity in our maps compared to that obtained for BP Tau and V2129 Oph we carry out the following test. We simulate data for BP Tau and V2129 Oph using the magnetic field maps obtained for CR Cha, incorporating the stellar parameters, phase coverage and S/N levels obtained by Donati et al. (2007, 2008b). Images are then reconstructed from these simulated spectra. These images are deconvolved into their spherical harmonic components (Fig. 9) and we then employ the procedure described above to determine the significance of the most complex modes observed in these simulated images (i.e. by producing a series of images with the most complex modes removed and recomputing the fit to the data).

We find that the simulated V2129 Oph maps show a similar level of complexity as the V2129 Oph maps reconstructed by Donati et al. (2007; see Figs 8 & 9). In contrast, the simulated BP Tau map is significantly more complex than that reconstructed by Donati et al. (2008b). The simulated BP Tau mode map shows significant power at $(l = 1, m = 1)$ with a $\Delta\chi^2 > 100$, and the more complex modes, e.g. at $(l = 5, m = 5)$ the significance level of $\Delta\chi^2 = 3$ (Fig. 9). There is no corresponding mode in the observed BP Tau

map. Hence even though BP Tau has a lower $v_e \sin i$ using this technique we can still reconstruct significant power at $l = 5, m = 5$ using data with the same S/N and phase coverage as that used by Donati et al. (2008b). We conclude therefore that the magnetic field on BP Tau is indeed less complex than that obtained for V2129 Oph, CV Cha and CR Cha.

7.2 What affects the complexity of the magnetic field in T Tauri stars?

We consider whether the stellar rotation period is the main cause of differences between the radiative CTTS and BP Tau. However, as CR Cha rotates almost twice as fast as CV Cha and V2129 Oph, yet shows a similar level of complexity, this does not appear to affect the complexity of the magnetic field in these systems.

We suggest that the major source of difference leading to the difference in complexity between the fully convective CTTS and our targets is the fact that our targets have developed a radiative core. This would then be analogous to the situation found in M dwarfs as recently reported (Donati et al. 2008c; Morin et al. 2008). The authors conduct spectropolarimetric surveys of M dwarfs ranging from the higher mass stars with radiative cores down to lower mass M stars that are close to full convection. They report that the fully convective M dwarfs have simpler, large-scale almost fully poloidal fields compared to those found in early M dwarfs. Reiners & Basri (2009) have also found evidence for fully convective stars having simpler fields using combined Stokes I and V data. Clearly further observations of other PMS stars are needed to clarify whether or not the majority of CTTS with radiative cores show more complex fields than those in fully convective CTTS, but these initial results would suggest that this is a strong possibility.

Reiners & Basri (2009) point out that Stokes V studies alone may miss a significant fraction of the total magnetic flux in cool stars, even though Stokes V studies are still the most powerful diagnostics to probe the *geometry* of the stellar magnetic field. Future studies of T Tauri stars should ideally combine both Stokes I and Stokes V data, in order to measure the total magnetic flux in these systems as well as the field geometries. As these studies require contemporaneous optical and NIR spectra of very variable systems, this is a challenging, yet potentially rewarding avenue for future studies.

7.3 Evolutionary status and magnetic fields

CV Cha and CR Cha are progenitors of early F- and late A-type ZAMS stars, while V2129 Oph will become an F-type MS star. CV Cha and CR Cha should take under 17 Myr to reach the ZAMS and less than 9 Myr to become fully radiative (Marconi & Palla 2004). Over this time their magnetic fields should evolve rapidly to comply with the relatively weak fields observed in A-type stars, where only 10 per cent of stars are Ap stars and observably magnetic (Mathys 2004). The two most likely explanations for the presence of magnetic fields in Ap-type stars are slowly decaying fields that were originally frozen in from the interstellar medium (ISM) as the stars first formed, or that the fields observed were originally generated in a PMS dynamo that ceased to operate once the star became fully radiative (Wade et al. 2008). Further ZDI observations of intermediate-mass PMS stars approaching the MS will be crucial in establishing whether or not similar magnetic fields exist in all intermediate-mass T Tauri stars and at what point this very strong ‘cool star-type’ magnetic activity switches off during the approach to the MS.

Evidently, there are also implications for the process of star formation in G- and K-type stars too. If future observations confirm our suggestion that stellar magnetic fields increase significantly in complexity as stars develop radiative cores, then this naturally alters the magnetosphere of the star and thus the efficiency with which the star can ‘lock’ on to its surrounding disc. This may be a significant factor in explaining how accretion finally stops in magnetically active stars. Detailed simulations of the effects of these changing fields are required to fully explore the effects of this significant evolution of the stellar magnetic field in magnetospheric accretion models.

In modelling the magnetospheric accretion of V2129 Oph and BP Tau, Gregory et al. (2008) conclude that the stronger dipole component of the fully convective BP Tau may truncate the disc close to the corotation radius in the manner assumed by many disc-locking models (e.g. Königl 1991; Collier Cameron & Campbell 1993). V2129 Oph, on the other hand, has a more complex field with a relatively weaker dipole component which may allow the disc to penetrate closer to the star than the corotation radius. If the change in the magnetic field structure of T Tauri stars as they develop radiative cores does indeed alter their ability to truncate their accretion discs, it may also alter the balance of magnetic and accretion torques that governs the rotational evolution of these stars.

This change in magnetic structure may also be apparent in the magnitude and rotational modulation of the X-ray luminosity of these stars. For PMS stars in NGC 2264 (~ 3 Myr), Rebull et al. (2006) found a significant drop in the X-ray luminosity of radiative compared to fully convective stars. If this is indeed related to the change in magnetic field structure, it may also be apparent in a greater rotational modulation in those stars with more complex fields. The smaller scale fields of the stars with radiative cores may also be unable to support the very long field lines associated with the ‘superflares’ detected in the COUP sample (Favata et al. 2005). These very powerful flares also exhibit the highest temperatures and produce the hardest X-ray photons, making them the favoured candidates for ionizing the disc (Igea & Glassgold 1999; Ercolano et al. 2008). The change in magnetic structure when the radiative core develops could therefore have a significant effect not only on the X-ray characteristics of the star, but also on the ionization state and structure of the disc.

ACKNOWLEDGMENTS

GAJH would like to thank Eike Guenther and Yvonne Unruh for useful discussions that helped improve this paper. The observations in this paper were obtained at the AAT and the assistance of the AAO staff with acquiring these observations is gratefully acknowledged. The authors also thank an anonymous referee for valuable suggestions that have improved this paper.

REFERENCES

- Ardila D. R., Basri G., 2000, *ApJ*, 539, 834
 Bally J., Walawender J., Luhman K. L., Fazio G., 2006, *AJ*, 132, 1923
 Barnes J. R., Collier Cameron A., Unruh Y. C., Donati J. F., Hussain G. A. J., 1998, *MNRAS*, 299, 904
 Bary J. S., Weintraub D. A., Shukla S. J., Leisenring J. M., Kastner J. H., 2008, *ApJ*, 678, 1088
 Bouvier J., Bertout C., Benz W., Mayor M., 1986, *A&A*, 165, 110
 Bouvier J., Alencar S. H. P., Harries T. J., Johns-Krull C. M., Romanova M. M., 2006, in Reipurth B., Jewitt D., Keil K., eds, *Protostars and Planets V*. University of Arizona Press, Tucson, p. 479
 Camenzind M., 1990, *Rev. Mod. Astron.*, 3, 234
 Collier Cameron A., Campbell C. G., 1993, *A&A*, 274, 309
 Collier Cameron A., Unruh Y. C., 1994, *MNRAS*, 269, 814
 Covino E., Terranegra L., Franchini M., Chavvaria K. C., Stalio R., 1992, *A&A*, 256, 525
 D’Antona F., Mazzitelli I., 1994, *ApJS*, 90, 467
 Donati J.-F., Collier Cameron A., 1997, *MNRAS*, 291, 1
 Donati J.-F., Semel M., Carter B. D., Rees D. E., Collier Cameron A., 1997, *MNRAS*, 291, 658
 Donati J.-F., Collier Cameron A., Hussain G. A. J., Semel M., 1999, *MNRAS*, 302, 437
 Donati J.-F. et al., 2003, *MNRAS*, 345, 1145
 Donati J.-F. et al., 2007, *MNRAS*, 380, 1297
 Donati J.-F. et al., 2008a, in van Belle G., ed., *ASP Conf. Ser. Vol. 384, Cool Stars, Stellar Systems, and the Sun*. Astron. Soc. Pac., San Francisco, p. 156
 Donati J.-F. et al., 2008b, *MNRAS*, 386, 1234
 Donati J.-F. et al., 2008c, *MNRAS*, 390, 545
 Donstone N. J., Hussain G. A. J., Collier Cameron A., Marsden S. C., Jardine M., Stempels H. C., Ramirez Velez J. C., Donati J.-F., 2008, *MNRAS*, 387, 481
 Ercolano B., Drake J. J., Raymond J. C., Clarke C. C., 2008, *ApJ*, 688, 398
 Favata F., Flaccomio E., Reale F., Micela G., Sciortino S., Shang H., Stassun K. G., Feigelson E. D., 2005, *ApJS*, 160, 469
 Feigelson E. D., Casanova S., Montmerle T., Guibert J., 1993, *ApJ*, 416, 623
 Gauvin L. S., Strom K. M., 1992, *ApJ*, 385, 217
 Gregory S. G., Matt S. P., Donati J.-F., Jardine M., 2008, *MNRAS*, 389, 1839
 Guenther E. W., Esposito M., Mundt R., Covino E., Alcal J. M., Cusano F., Stecklum B., 2007, *A&A*, 467, 1147
 Hatzes A. P., Kürster M., 1999, *A&A*, 346, 432
 Herbst W., Mundt R., 2005, *ApJ*, 633, 967
 Herczeg G. J., Hillenbrand L. A., 2008, *ApJ*, 681, 594
 Howarth I. D., Murray J., Mills D., 1994, *Starlink User Note*, No. 50.15
 Hussain G. A. J., 2000, PhD thesis, Univ. St Andrews
 Hussain G. A. J., Donati J.-F., Collier Cameron A., Barnes J. R., 2000, *MNRAS*, 318, 961
 Igea J., Glassgold A. E., 1999, *ApJ*, 518, 848
 Jardine M. M., Gregory S. G., Donati J.-F., 2008, *MNRAS*, 386, 688
 Johns-Krull C., Valenti J. A., Koresko C., 1999, *ApJ*, 516, 900
 Königl A., 1991, *ApJ*, 370, L39
 Kupka F., Piskunov N. E., Ryabchikova T. A., Stempels H. C., Weiss W. W., 1999, *A&AS*, 138, 119
 Kurucz R. L., 1993, CD-ROM, Cambridge MA, SAO, Ic1993, December 4, 1993
 Kurucz R. L., 2005, *Mem. Soc. Astron. Ital. Suppl.*, 8, 14
 Luhman K. L., 2004, *ApJ*, 602, 816
 Marconi M., Palla F., 2004, in Zverko J., Ziznovsky J., Adelman S. J., Weiss W. W., eds, *Proc. IAU Symp. 224, The A-Star Puzzle*. Cambridge Univ. Press, Cambridge, p. 69
 Mathys G., 2004, in Zverko J., Žižňovský J., Adelman S. J., Weiss W. W., eds, *Proc. IAU Symp. 224, The A-Star Puzzle*. Cambridge Univ. Press, Cambridge, p. 225
 Morin J. et al., 2008, *MNRAS*, 390, 567
 Natta A., Meyer M. R., Beckwith S. V. W., 2000, *ApJ*, 534, 838
 Natta A., Testi L., Muzerolle J., Randich S., Comerón F., Persi P., 2004, *A&A*, 424, 603
 Palla F., Stahler S. W., 1999, *ApJ*, 525, 882
 Rebull L. M., Stauffer J. R., Ramirez S. V., Flaccomio E., Sciortino S., Micela G., Strom S. E., Wolff S. C., 2006, *AJ*, 131, 2934
 Reiners A., Basri G., 2009, *A&A*, 496, 787
 Reipurth B., Pedrosa A., Lago M. T. V. T., 1996, *A&AS*, 120, 229
 Robrade J., Schmitt J. H. M. M., 2006, *A&A*, 449, 737
 Schegerer A., Wolf S., Voshchinnikov N. V., Przygodda F., Kessler-Silacci J. E., 2006, *A&A*, 456, 535
 Semel M., 1989, *A&A*, 225, 456
 Shevchenko V. S., Herbst W., 1998, *AJ*, 116, 1419

Shu F., Najita J., Ostriker E., Wilkin F., Ruden S., Lizano S., 1994, *ApJ*, 429, 781
 Siess L., Dufour E., Forestini M., 2000, *A&A*, 358, 593
 Skelly M. B., Unruh Y. C., Collier Cameron A., Barnes J. R., Donati J.-F., Lawson W. A., Carter B. D., 2008, *MNRAS*, 385, 708
 Stempels H. C., Piskunov N., 2003, *A&A*, 408, 693
 Unruh Y. C., Collier Cameron A., Guenther E., 1998, *MNRAS*, 295, 781
 Unruh Y. C. et al., 2004, *MNRAS*, 348, 1301
 Valenti J. A., Johns-Krull C. M., Hatzes A. P., 2003, in Brown A., Harper G., Ayres T., eds, 12th Cambridge Workshop on Cool Stars Stellar Systems and the Sun. University of Colorado, Boulder, p. 729

Valenti J. A., Johns-Krull C. M., 2004, *Astrophysics & Space Science*, 292, 619
 Wade G. A., 2009, in ASP Conf. Ser., Solar Polarisation Workshop Number 5. Astron. Soc. Pac., San Francisco, in press
 Wichmann R., Bastian U., Krautter J., Jankovics I., Rucinski S. M., 1998, *MNRAS*, 301, L39

APPENDIX A: SPECTRAL FITS

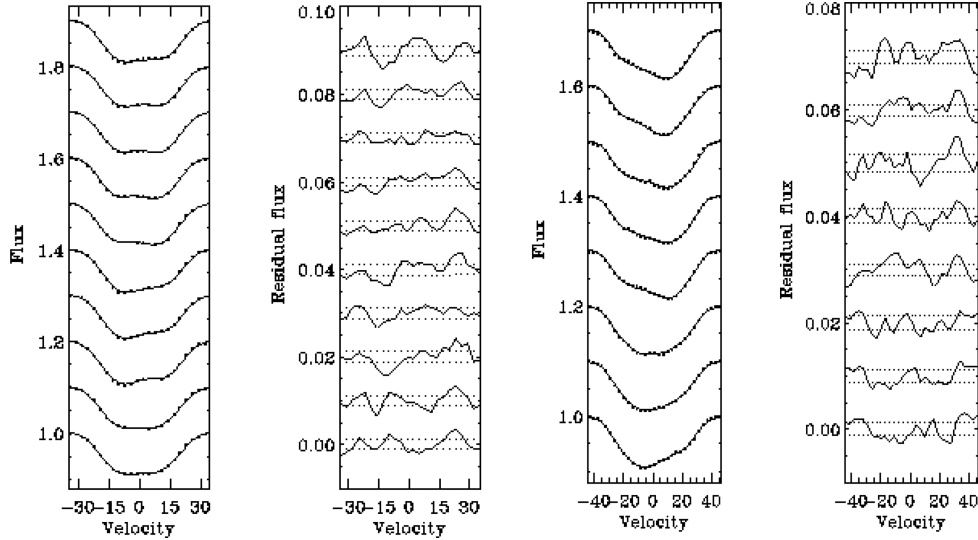


Figure A1. Fits and residuals for the brightness maps (Fig. 5) of CV Cha (left) and CR Cha (right). Intensity maps for both CV Cha and CR Cha produce fits to the data set at a $\chi_r^2 = 2.5$. The profiles are stacked in order of observation as in Figs 3 and 4; see Table 2 for more details.

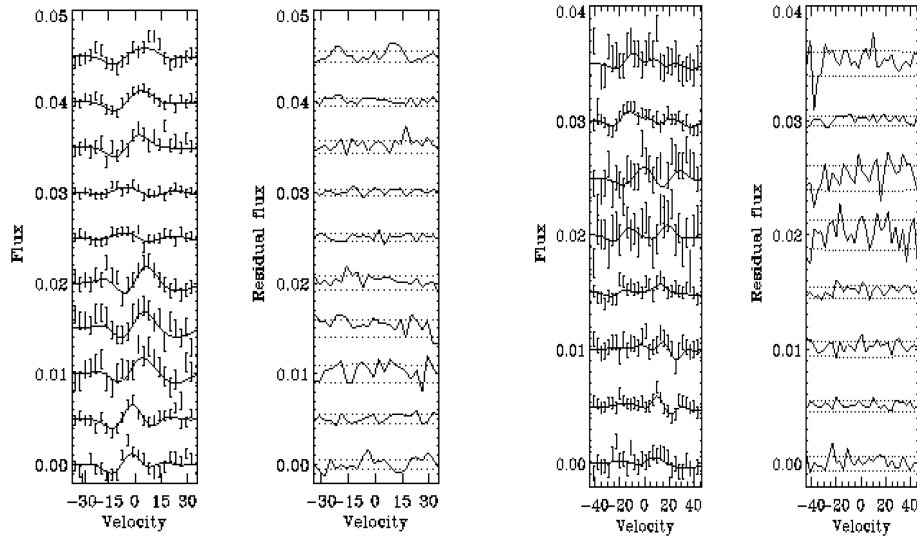


Figure A2. Fits and residuals for the magnetic field maps of CV Cha (left) and CR Cha (right). The CV Cha map produces a fit of $\chi_r^2 = 1.1$ and the CR Cha maps fit the observed spectra to a level of $\chi_r^2 = 1.0$. Residuals are shown on the right-hand side of each plot with the ± 1 error bar sizes shown as dashed lines. The profiles are shown stacked in order of observation as in Figs 3 and 4; see Table 2 for more details.

This paper has been typeset from a \LaTeX file prepared by the author.