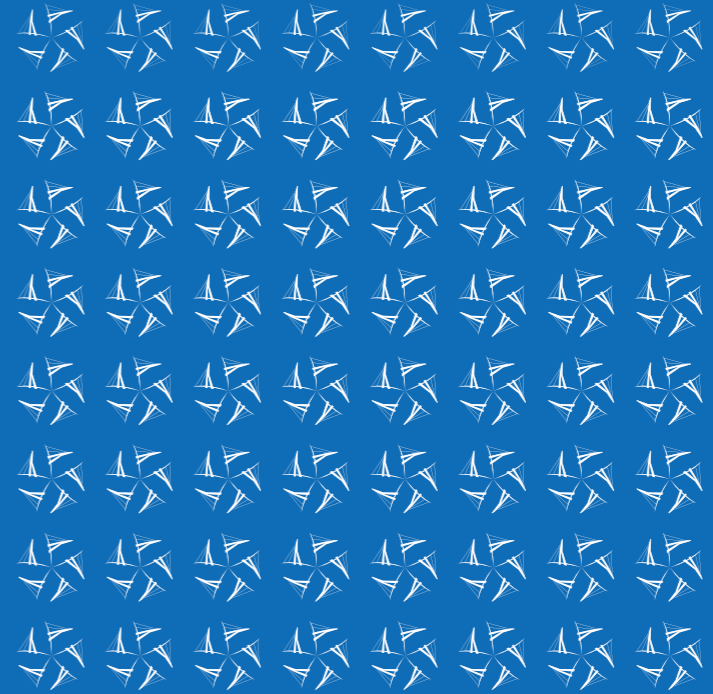


SDI Convergence



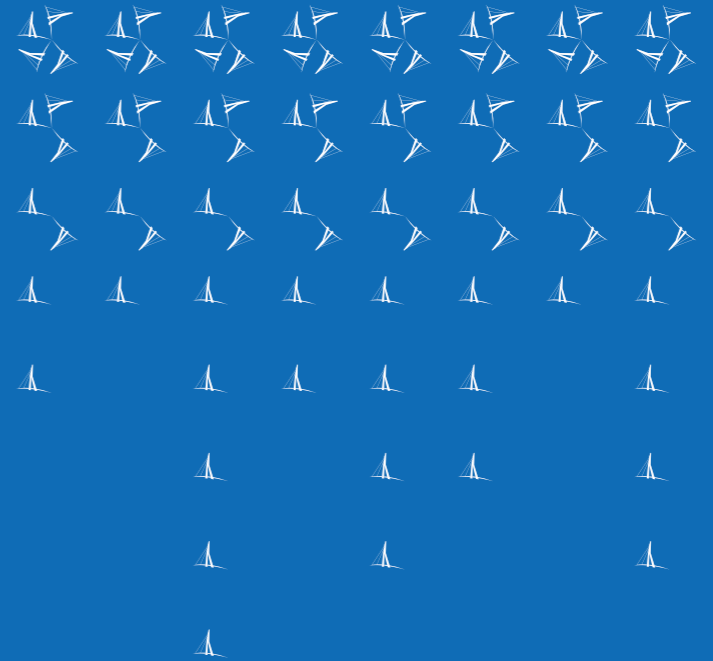
Research, Emerging Trends, and Critical Assessment



SDI Convergence

Research, Emerging Trends, and Critical Assessment

B. van Loenen - J.W.J. Besemer - J.A. Zevenbergen (eds.)



SDI Convergence

Research, Emerging Trends, and Critical Assessment

B. van Loenen, J.W.J. Besemer, J.A. Zevenbergen (Editors)

Delft, June 2009

SDI Convergence. Research, Emerging Trends, and Critical Assessment
B. van Loenen, J.W.J. Besemer, J.A. Zevenbergen (Editors)

Printed by: Optima Grafische Communicatie, Optima Graphic Communication, Rotterdam, the Netherlands
Cover design: Itziar Lasa Epelde

Also published as:

SDI Convergence. Research, Emerging Trends, and Critical Assessment
B. van Loenen, J.W.J. Besemer, J.A. Zevenbergen (Editors)

Nederlandse Commissie voor Geodesie, Netherlands Geodetic Commission, 48, 2009

ISBN: 978 90 6132 310 5

NCG, Nederlandse Commissie voor Geodesie, Netherlands Geodetic Commission, Delft, the Netherlands.

E: info@ncg.knaw.nl. W: www.ncg.knaw.nl.

The individual articles in this book are made available under a Creative Commons Attribution 3.0 License (<http://creativecommons.org/licenses/by/3.0/legalcode>). Any use of the text contained in the individual articles in contradiction with the Creative Commons License, Attribution 3.0 requires express permission in writing by the author(s) of the article.

Table of Contents

Foreword	vii
Peer Review Board for SDI Convergence: Research, Emerging Trends, and Critical Assessment	viii
Spatial Data Infrastructure Convergence B. van Loenen, J. Besemer and J. Zevenbergen	1
The Potential of a National Atlas as Integral Part of the Spatial Data Infrastructure Exemplified by the New Dutch National Atlas M-J. Kraak, F. Ormeling, B. Köbben and T. Aditya	9
Development and Deployment of a Services Catalog in Compliance with the INSPIRE Metadata Implementing Rules J. Nogueras-Iso, J. Barrera, A.F. Rodríguez, R. Recio, C. Laborda and F.J. Zarazaga-Soria	21
Public Sector Geo Web Services: Which Business Model Will Pay for a Free Lunch? F. Welle Donker	35
Standard Licences for Geographic Information: the Development and Implementation in Local Government in Italy L. Garretti, S. Griffa, R. Lucà and M.T. Lopreiato	53
Legal Simcity; Legislative Maps and Semantic Web Supporting Conflict Resolution R. Peters, R. Hoekstra, T. van Engers and E. Hupkes	63
Power and Privacy: the Use of LBS in Dutch Public Administration C. van Ooijen and S. Nouwt	75
Harmonising and Integrating Two Domain Models Topography J. Stoter, W. Quak and A. Hofman	89
An Analysis of Technology Choices for Data Grids in a Spatial Data Infrastructure S. Coetzee and J. Bishop	107
SDI and Metadata Entry and Updating Tools A. Rajabifard, M. Kalantari and A. Binns	121
A Prototype Metadata Tool for Land Use Change and Impact Models – a Case Study in Regional Victoria, Australia S. Williams, C. Pettit, D. Hunter and D. Cherry	137
Implementation of Recent Metadata Directives and Guidelines in Public Administration: the Experience of Sardinia Region L. Manigas, M. Beneventi, L. Corvetto, R. Vinelli and M. Melis	151

An Integrated Framework for the Implementation and Continuous Improvement of Spatial Data Infrastructures A. Toomanian and A. Mansourian	161
The Value Chain Approach to Evaluate the Economic Impact of Geographic Information: Towards a New Visual Tool E. Genovese, S. Roche and C. Caron	175
Evaluation of Spatial Information Technology Applications for Mega City Management S. Boos and H. Mueller	189
Local Government and SDI – Understanding their Capacity to Share Data K. McDougall, A. Rajabifard and I. Williamson	205
Changing Notions of a Spatial Data Infrastructure I. Masser	219
Cooperation – a Key Factor for Sustainable Spatial Data Infrastructure O. Olsson	229
Seamless SDI Model - Bridging the Gap between Land and Marine Environments S. Vaez, A. Rajabifard and I. Williamson	239
The RRR Toolbox: a Conceptual Model for Improving Spatial Data Management in SDIs R. Bennett and A. Rajabifard	253
Building SDI Bridges for Catchment Management D. Raj Paudyal, K. McDougall and A. Apan	265

Foreword

This book is the result of a collaborative initiative of the Global Spatial Data Infrastructure Association (GSDI), the European Commission's Joint Research Centre, the European umbrella organisation for geographic information (EUROGI), the Dutch innovation program Space for Geo-Information (RGI) and Geonovum, the Netherlands SDI executive committee. In addition to the traditional call for papers for the joint GSDI-11/ IN-SPIRE/ Geonovum RGI conference "Spatial Data Infrastructure Convergence: Building SDI Bridges to Address Global Challenges" contributions of full articles were solicited for publication in this peer reviewed volume.

In several instances, the articles submitted addressed the theme of the conference. In others they stuck to the more traditional fields of SDI. The reviewing process resulted in twenty articles that together can be summarised as Spatial Data Infrastructure Convergence: Research, Emerging Trends, and Critical Assessment. These topics are represented well in this volume. We thank the authors of the articles and the members of the Peer Review Board.

We are grateful to the Netherlands Geodetic Commission (NCG) for their willingness to publish this work under a Creative Commons Attribution 3.0 license. It allows all to use the experiences and research presented in this book to their advantage. We especially thank Frans Schröder and Leni Verhoog of the Netherlands Geodetic Commission (NCG) for their assistance during the entire publishing process.

Rob van de Velde, Chairman
Local Organising Committee for GSDI-11
Director, Geonovum, the Netherlands

Bas C. Kok, President
GSDI Association (2008-2009)

Alessandro Annoni,
European Commission, Joint Research Centre

Mauro Salvemini, President; João Geirinhas, Secretary General
EUROGI

Jacqueline Meerkerk, Director
Space for Geo-Information (RGI), the Netherlands

Peer Review Board for SDI Convergence: Research, Emerging Trends, and Critical Assessment

Dr. Bastiaan van Loenen, Prof. Jaap Besemer, Prof.Dr. Jaap Zevenbergen,
Delft University of Technology, the Netherlands, Editors

Dr. Alesandro Annoni, European Commission, Joint Research Centre, Italy
Dr. Arnold Bregt, Wageningen University, the Netherlands
Dr. Gilberto Câmara, Instituto Nacional de Pesquisas Espaciais, Brazil
Dr. George Cho, University of Canberra, Australia
Dr. Nicholas Chrisman, GEOIDE Network, Québec, Canada
Dr. David Coleman, University of New Brunswick, Canada
Dr. Max. Craglia, European Commission, Joint Research Centre, Italy
Dr. Joep Cromptoets, Catholic University Leuven, Belgium
Dr. A.R. Dasgupta, Bhaskaracharya Institute for Space Application and Geo-
informatics, Department of Science and Technology, Government of Gujarat, India
Dr. Yola Georgiadou, ITC, the Netherlands
Dr. Francis Harvey, University of Minnesota, USA
Dr. Angela Ionita, Romanian Academy Institute for Artificial Intelligence, Romania
Dr. Olajide Kufoniyi, Regional Centre for Training in Aerospace Survey, Nigeria
Dr. Werner Kuhn, University of Münster, Germany
Dr. R Siva Kumar, Department of Science & Technology, Government of India, India
Dr. Ian Masser, Emeritus Professor, United Kingdom
Dr. Martien Molenaar, ITC, the Netherlands
Dr. Harlan Onsrud, The University of Maine, USA
Dr. Zorica Nedović–Budić, University of Illinois @ Urbana-Champaign, USA
Dr. Abbas Rajabifard, University of Melbourne, Australia
Dr. Bheshem Ramlal, University of West Indies, Trinidad
Dr. Carl Reed, Open Geospatial Consortium (OGC), USA
Dr. Robin Smith, European Commission, Joint Research Centre, Italy
Dr. Carmelle J. Terborgh (Côté), ESRI
Dr. Mathew Warnest, MISAust, Australia