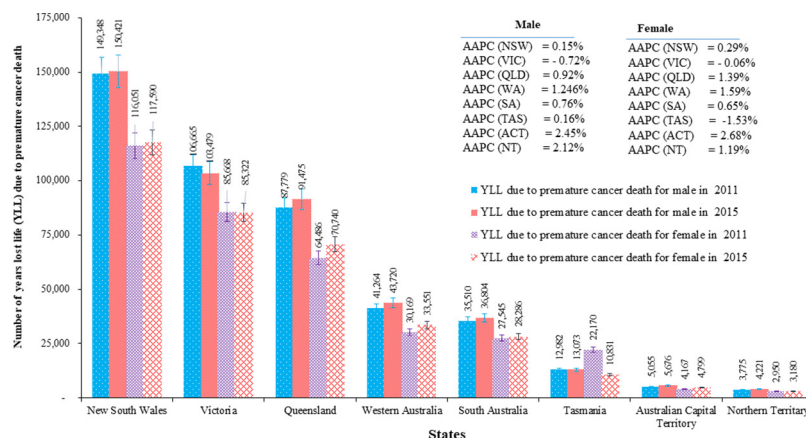


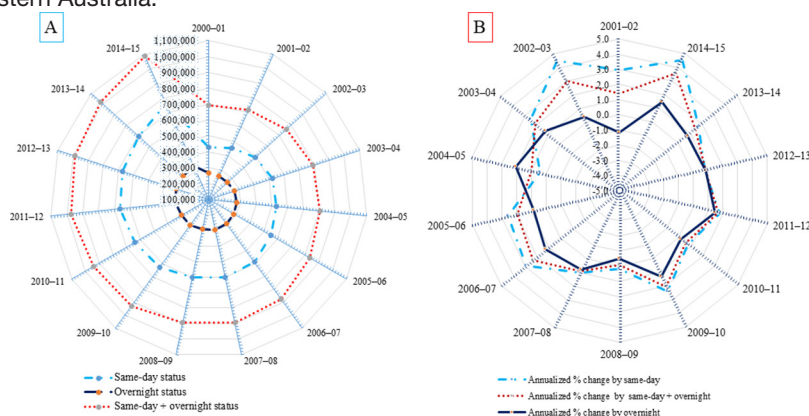
## Correction: Emerging cancer incidence, mortality, hospitalisation and associated burden among Australian cancer patients, 1982 – 2014: an incidence-based approach in terms of trends, determinants and inequality

Mahumud RA, Alam K, Dunn J, *et al.* Emerging cancer incidence, mortality, hospitalisation and associated burden among Australian cancer patients, 1982– 2014: an incidence-based approach in terms of trends, determinants and inequality. *BMJ Open* 2019;9:e031874. doi: 10.1136/bmjopen-2019-031874

This article was previously published with an error in figures. The correct figures are below:



**Figure 4** Trends of fatal burden of cancer across states, Australia, 2011 to 2015. AAPC, average annual percentage change; act, Australian Capital Territory; NSW, New South Wales; nt, Northern Territory; QLD, Queensland; SA, South Australia; tas, Tasmania; VIC, Victoria; WA, Western Australia.



**Figure 5** Distribution of cancer-related hospitalisations by same-day and overnight status in Australia, 2000 to 2015.

**Open access** This is an open access article distributed in accordance with the Creative Commons Attribution Non Commercial (CC BY-NC 4.0) license, which permits others to distribute, remix, adapt, build upon this work non-commercially, and license their derivative works on different terms, provided the original work is properly cited, appropriate credit is given, any changes made indicated, and the use is non-commercial. See: <http://creativecommons.org/licenses/by-nc/4.0/>.

© Author(s) (or their employer(s)) 2020. Re-use permitted under CC BY-NC. No commercial re-use. See rights and permissions. Published by BMJ.

*BMJ Open* 2020;10:e031874corr1. doi:10.1136/bmjopen-2019-031874corr1

